

## Basic

## Standard Centrifugal Pump

## Model 62E31-B &amp; 62E32-B

## Size 3" x 2"



## PUMP SPECIFICATIONS

**Size:** 3" x 2" (76 mm x 52 mm) Flanged.

**Casing:** (62E31-B) Ductile Iron 65-45-12

(62E32-B) Cast Steel 70-36).

Maximum Operating Pressure 60 psi (414 kPa).\*

**Enclosed Type, Four Vane Impeller:** Aluminum Alloy 356-T6.

Handles 1/4" (6.4 mm) Diameter Spherical Solids.

**Impeller Shaft:** Carbon Steel 1045.

**Bearing Housing:** Ductile Iron 65-45-12.

**Bearing Housing Lubrication:** Grease.

**Radial and Thrust Bearings:** Sealed Single Row Ball.

**Body Cover :** (62E31-B) Ductile Iron 65-45-12

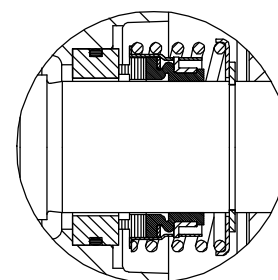
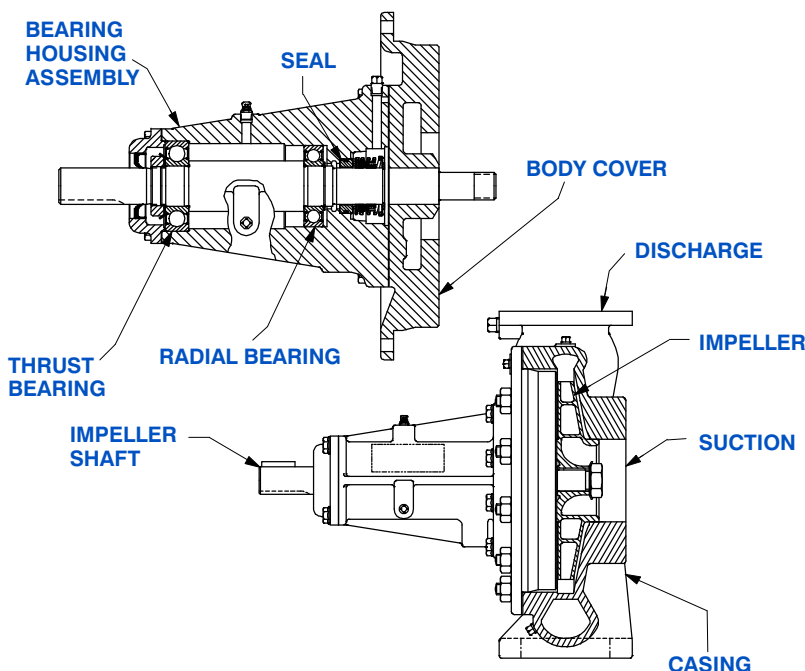
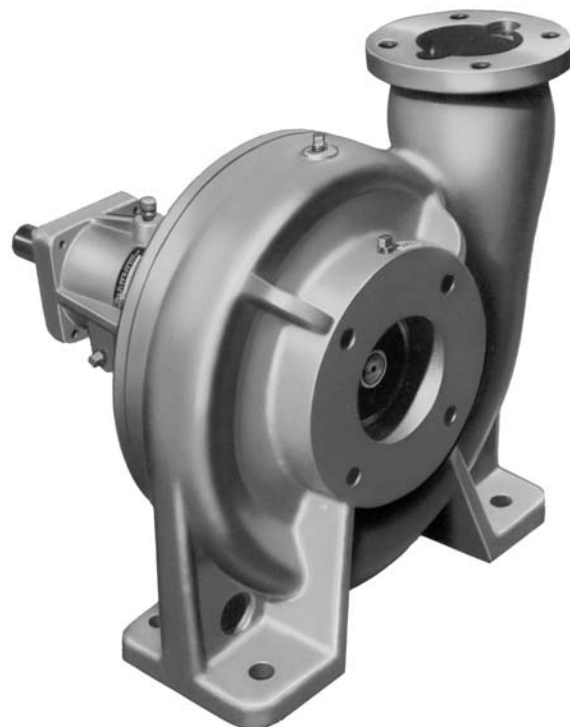
(62E32-B) Cast Steel 70-36.

**Gaskets:** Vegetable Fiber and Cork.

**Hardware:** Standard Plated Steel.

**Optional Equipment:** 150# Steel 3" NPT Suction and 2" NPT Discharge Flange Kit. Strainer. Copper Alloy C93700 Impeller. PTFE Seal with Fluorocarbon O-Ring. PTFE Seal with Buna-N O-Ring. Stainless Steel 416 Impeller Shaft.

*\*Consult Factory for Applications Exceeding Maximum Pressure and/or Temperature Indicated.*



## SEAL DETAIL

Type 2, Mechanical Self-Lubricated. Carbon Rotating Face. Ni-Resist Stationary Face. Fluorocarbon Elastomers (DuPont Viton® or Equivalent). Stainless Steel 18-8 Cage and Spring. Maximum Temperature of Liquid Pumped, 160°F [71°C].\*



GORMAN-RUPP PUMPS

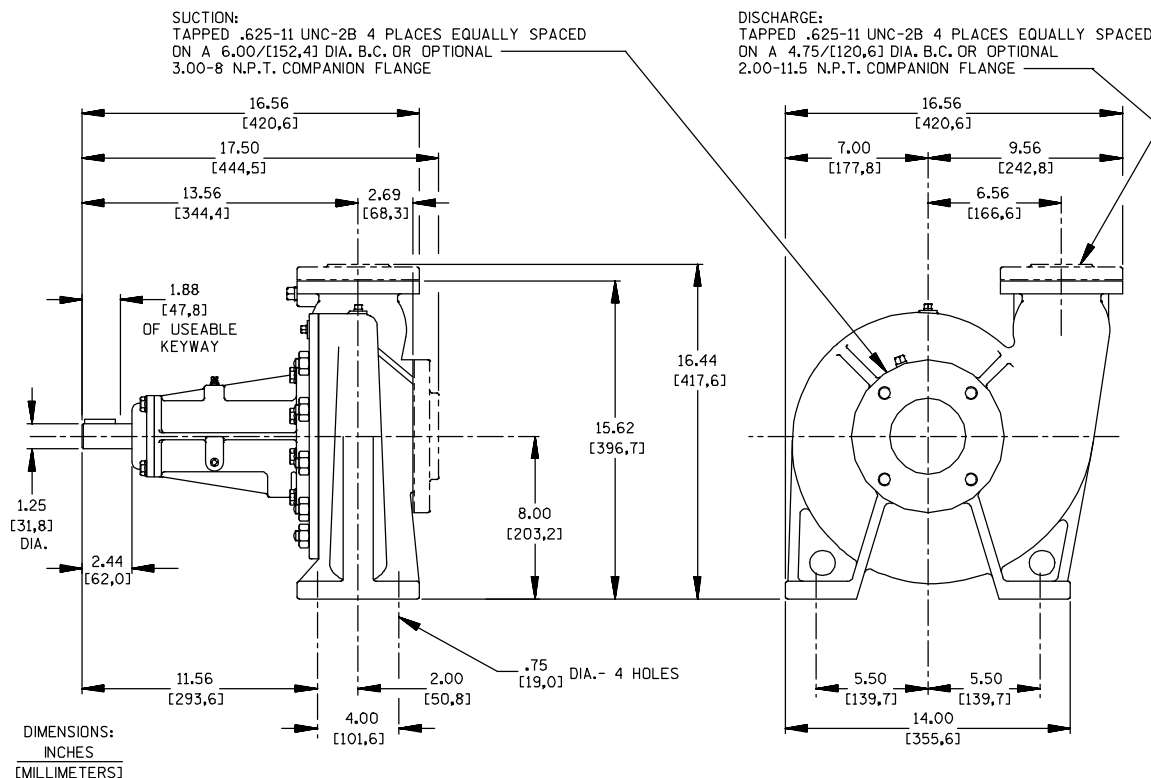
www.grpumps.com

Specifications Subject to Change Without Notice

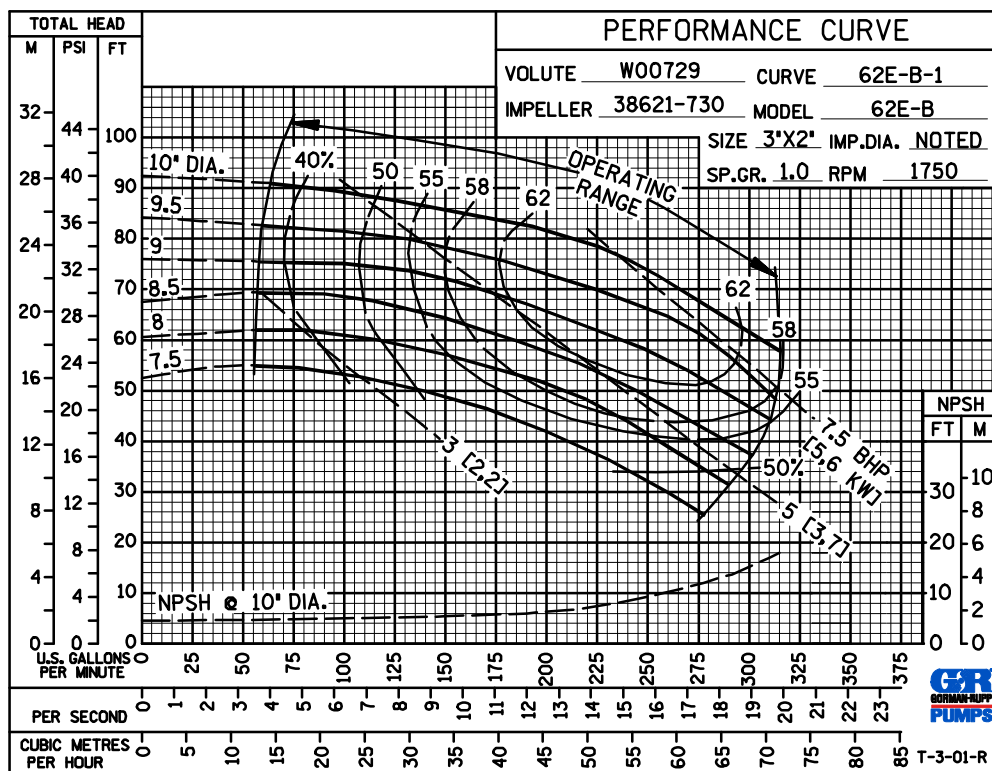
Printed in U.S.A.

**SECTION 70, PAGE 200C**

**NET WEIGHT:** 145 LBS. (65,8 KG.)  
**SHIPPING WEIGHT:** 159 LBS. (72,1 KG.)  
**EXPORT CRATE:** 5.6 CU. FT. (0,16 CU. M.)



## PERFORMANCE BASED ON WATER



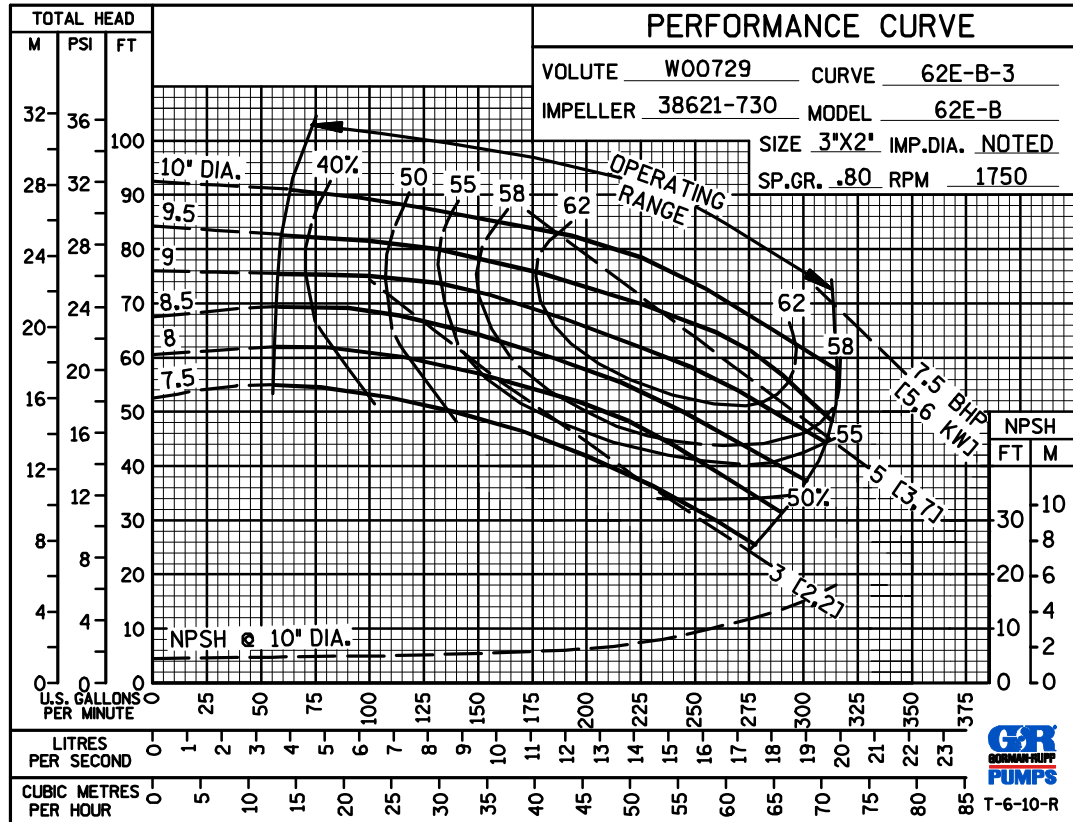
# GORMAN-RUPP PUMPS

[www.grpumps.com](http://www.grpumps.com)

Specifications Subject to Change Without Notice

Printed in U.S.A.

A B C E

PERFORMANCE  
BASED ON  
PETROLEUM

GORMAN-RUPP PUMPS

[www.grpumps.com](http://www.grpumps.com)

Specifications Subject to Change Without Notice

Printed in U.S.A.