

ACE

## Basic Pedestal

## Self Priming Centrifugal Pump

Model 86B2-B

Size 6" x 6"



## PUMP SPECIFICATIONS

**Size:** 6" x 6" (152 mm x 152 mm) NPT - Female.

**Casing:** Gray Iron 30.

**Maximum Operating Pressure** 78 psi (538 kPa).\*

**Semi-Open Type, Four Vane Impeller:** Gray Iron 30.

Handles 1 3/4" (44,5 mm) Diameter Spherical Solids.

**Impeller Shaft:** Alloy Steel 4150.

**Replaceable Wear Plate:** Gray Iron 30.

**Pedestal:** Gray Iron 30.

**Seal Plate:** Gray Iron 30.

**Seal Liner:** Copper Alloy C26000.

**Flap Valve:** Buna-N and Steel.

**Radial Bearing** Open Single Row Ball.

**Thrust Bearing:** Open Double Row Ball.

**Bearing Lubrication:** SAE 30 Non-Detergent Oil.

**Suction Flange:** Gray Iron 30.

**Gaskets:** Vegetable Fiber.

**O-Ring:** Buna-N.

**Hardware:** Standard Plated Steel and Stainless Steel.

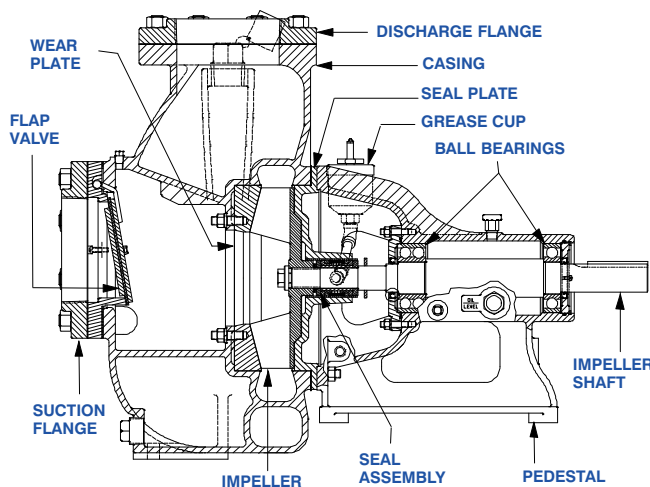
**Oil Level Sight Gauge.**

**Strainer.**

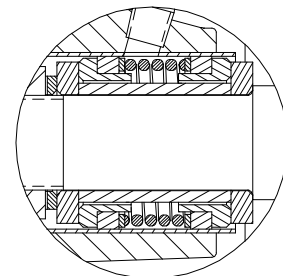
**Optional Equipment:** 120/240 Volt Casing Heater.

Consult Factory for Additional Options.

*\*Consult Factory for Applications Exceeding Maximum Pressure and/or Temperature Indicated.*



**SEAL DETAIL** Double, Grease Lubricated with Spring-Loaded Grease Cup. Sintered Bronze Stationary Seal Seats. Steel Rotating Faces. Neoprene Packing Rings. Maximum Temperature of Liquid Pumped, 110°F (43°C). Maximum Suction Pressure 10 psi (69 kPa).\*



THE GORMAN-RUPP COMPANY • MANSFIELD, OHIO

GORMAN-RUPP OF CANADA LIMITED • ST. THOMAS, ONTARIO, CANADA

www.grpumps.com

Specifications Subject to Change Without Notice

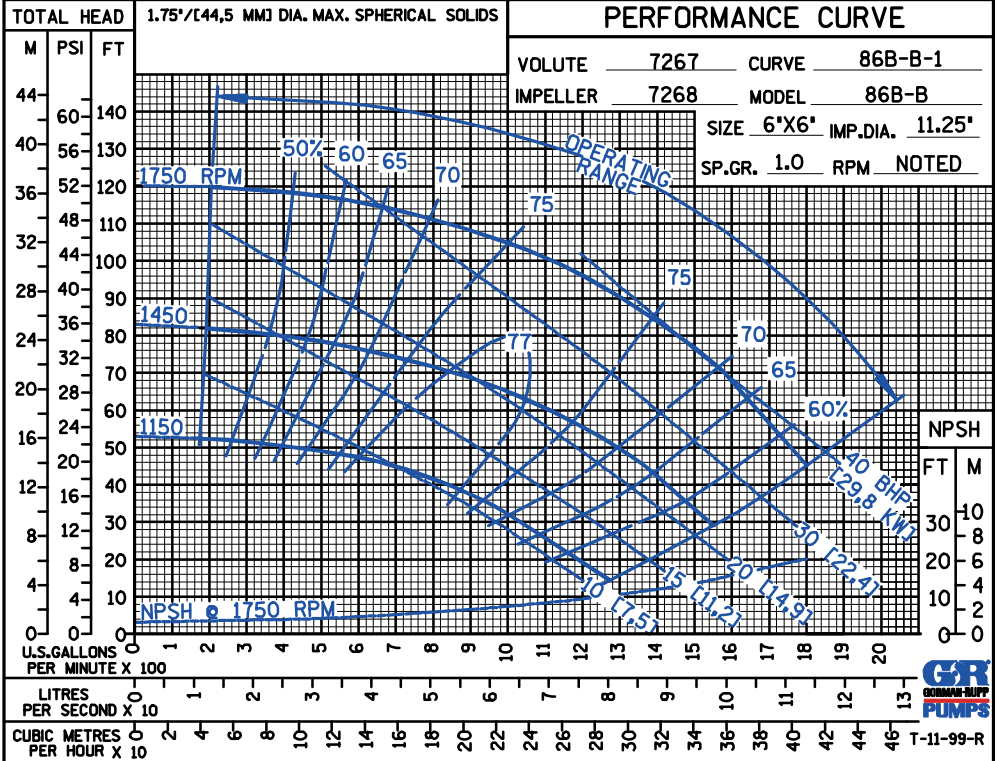
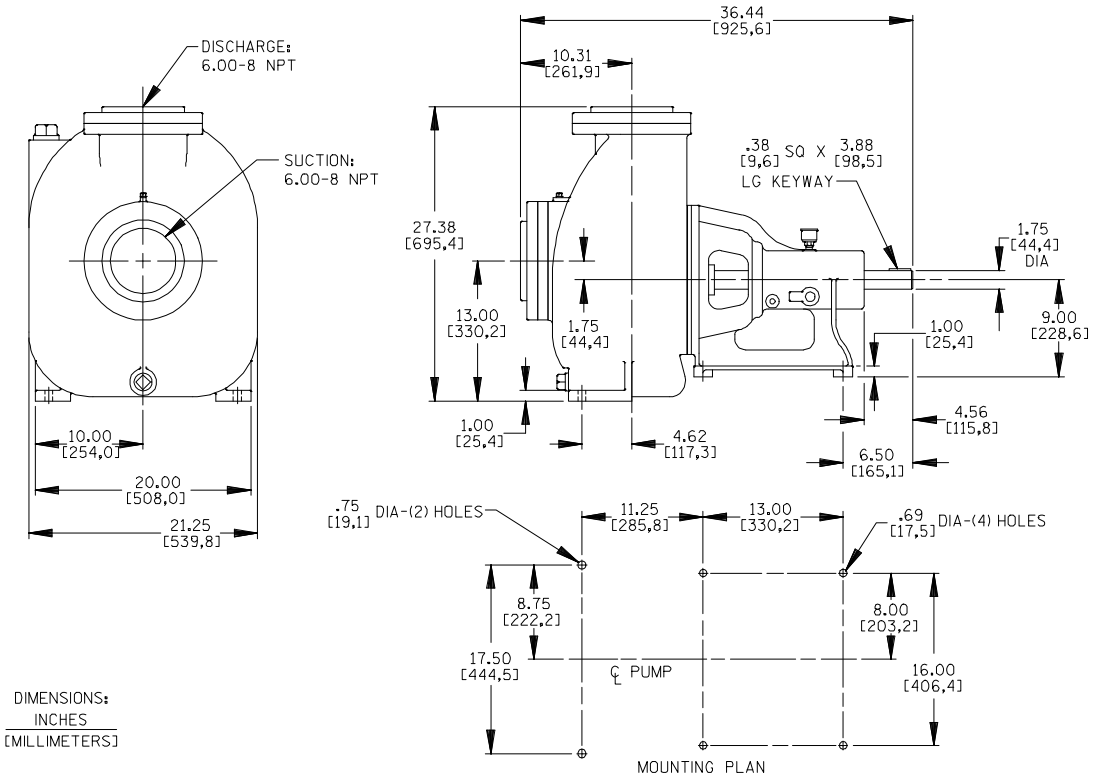
Printed in U.S.A.

# Specification Data

SECTION 50, PAGE 2050C

APPROXIMATE DIMENSIONS and WEIGHTS

**NET WEIGHT:** 620 LBS. (281 KG.)  
**SHIPPING WEIGHT:** 670 LBS. (304 KG.)  
**EXPORT CRATE:** 26 CU. FT. (0,74 CU. M.)



THE GORMAN-RUPP COMPANY • MANSFIELD, OHIO

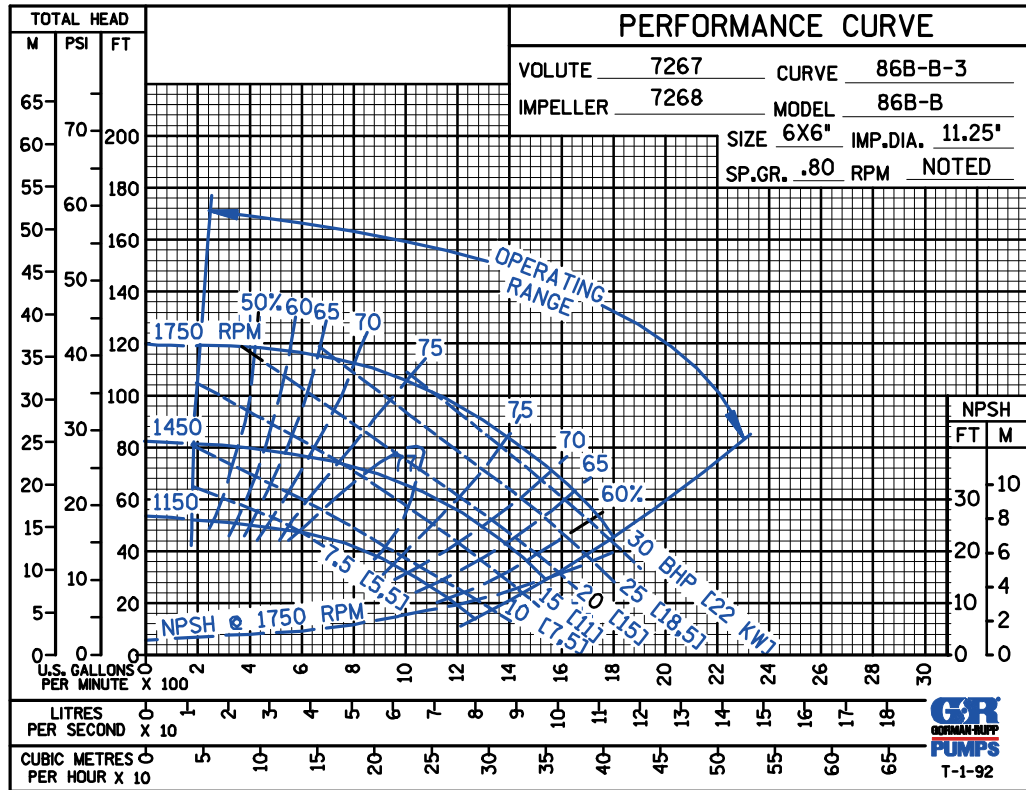
GORMAN-RUPP OF CANADA LIMITED • ST. THOMAS, ONTARIO, CANADA

Specifications Subject to Change Without Notice

Printed in U.S.A.

A B C D E

PERFORMANCE  
BASED ON  
PETROLEUM



THE GORMAN-RUPP COMPANY • MANSFIELD, OHIO

GORMAN-RUPP OF CANADA LIMITED • ST. THOMAS, ONTARIO, CANADA

Specifications Subject to Change Without Notice

Printed in U.S.A.