

**Priming Assisted Centrifugal Pump  
w/Autostart**



**Model PA12A60-B-C4.4TA FT4-ESP /S1**

**Size 12" x 12"**



VARIOUS PATENTS APPLY

| Total Head          |      | Capacity of Pump in U.S. Gallons per Minute (GPM) at Continuous Performance |            |            |            |           |
|---------------------|------|---|------------|------------|------------|-----------|
| P.S.I.              | Feet |   |            |            |            |           |
| 45.1                | 104  | 1100  | 1100       | 1100       | 1100       | 1100      |
| 43.4                | 100  | 2000  | 2300       | 2300       | 2300       | 2300      |
| 39.0                | 90   | 2700  | 3620       | 3750       | 3750       | 3750      |
| 34.7                | 80   | 3000  | 4110       | 4650       | 4700       | 4700      |
| 30.4                | 70   | 3090  | 4250       | 5050       | 5450       | 5430      |
| 26.0                | 60   | 3140  | 4300       | 5100       | 5740       | 5920      |
| 22.7                | 50   | 3200  | 4350       | 5150       | 5850       | 6030      |
| 17.3                | 40   | 3290  | 4400       | 5200       | 5900       | 6100      |
| 13.0                | 30   | 3340  | 4440       | 5250       | 5910       | 6190      |
| <b>Suction Lift</b> |      | <b>25'</b>  | <b>20'</b> | <b>15'</b> | <b>10'</b> | <b>5'</b> |



**PUMP SPECIFICATIONS**

- Size:** 12 x 12" (305 mm x 305 mm) Flanged.
- Casing:** Gray Iron 30.
- Maximum Operating Pressure 71 psi (490 kPa).\*
- Enclosed Type, Three Vane Impeller:** Ductile Iron 65-45-12. Handles 3" (76,2 mm) Diameter Spherical Solids.
- Suction Spool:** Gray Iron 30.
- Impeller Shaft:** Stainless Steel 17-4 PH.
- Pedestal:** Gray Iron 30.
- Seal Plate:** Gray Iron 30.
- Seal:** Mechanical, SAE 30 Non-Detergent Oil-Lubricated. Silicon Carbide Rotating Face. Silicon Carbide Stationary Seat. Fluorocarbon Elastomers (DuPont Viton® or Equivalent). Stainless Steel 18-8 Cage and Spring. Maximum Temperature of Liquid Pumped, 160°F (71°C).\*
- Shaft Sleeve:** Stainless Steel 303/304.
- Priming Chamber:** Gray Iron 30 Housing w/Stainless Steel Float and Linkage.
- Discharge Check Valve:** Ductile Iron Housing w/Welded Nickel Seat and Buna-N Flapper.
- Radial Bearing:** Open Single Row Ball.
- Thrust Bearing:** Open Double Row Ball.
- Bearing Cavity Lubrication** SAE 30 Non-Detergent Oil.
- Gaskets:** Red Rubber, Buna-N, and Compressed Synthetic Fibers.
- O-Rings:** Buna-N.
- Hardware:** Standard Plated Steel.
- Seal Cavity Oil Level Sight Gauges.**

\*Consult Factory for Applications Exceeding Maximum Pressure and/or Temperature Indicated.

**Standard Equipment:** Gear-Driven Air Compressor. Hoisting Bail. Soundproof (EPA Average 78.0 dBA at 23 feet [7 meters] Under Load) Lightweight Aluminum Enclosure - Removable for Maintenance of Pump or Engine - w/Lockable Door Panels. **Single Ball Type Float Switch.** Combination Skid Base w/Fuel Tank. **Full Feature Control Panel.** Battery. Heated Priming Chamber Kit. \*\*

**Optional Equipment:** NPT Suction and Discharge Flange Kits. **Tandem Axle Over-the-Road Trailer** (Meets DOT Requirements). Liquid Level Transducer.

\*\*50 Ft. (15 m) Standard Length; Dual Switches and Alternate Cable Lengths Available From the Factory.

**WARNING!**  
Do not use in explosive atmosphere or for pumping volatile flammable liquids.

**ENGINE SPECIFICATIONS**

- Model:** Caterpillar C4.4TA.
- EPA Tier:** Tier 4.
- Type:** Four Cylinder, Turbocharged Diesel Engine.
- Displacement:** 269 Cu. In. (4,41 Liters).
- Lubrication:** Forced Circulation.
- Air Cleaner:** Dry Type.
- Fuel Tank:** 206 U.S. Gals. (780 Liters).
- Full Load Operating Time:** 32 Hrs.
- Starter:** 12V Electric.
- Standard Features:** Muffler w/Weather Cap. DOC/SCR Exhaust After Treatment System

**Engine Control Features:** Padlockable Box with Throttle Control, Tachometer, Coolant Temperature, Oil Pressure, Voltage and Overstart Indicators/Shutdowns. Manual/Stop/Auto Keyswitch. Audible Startup Warning Delay. Electronic Fuel Level Sensor. Fuel Level Display/Alarm/Shutdown.

**CATERPILLAR PUBLISHED PERFORMANCE:**

Maximum Gross BHP (Intermittent)  
148 (110 kW) @ 2200 RPM



**GORMAN-RUPP PUMPS**

www.grpumps.com

Specifications Subject to Change Without Notice

Printed in U.S.A.

**Specification Data**

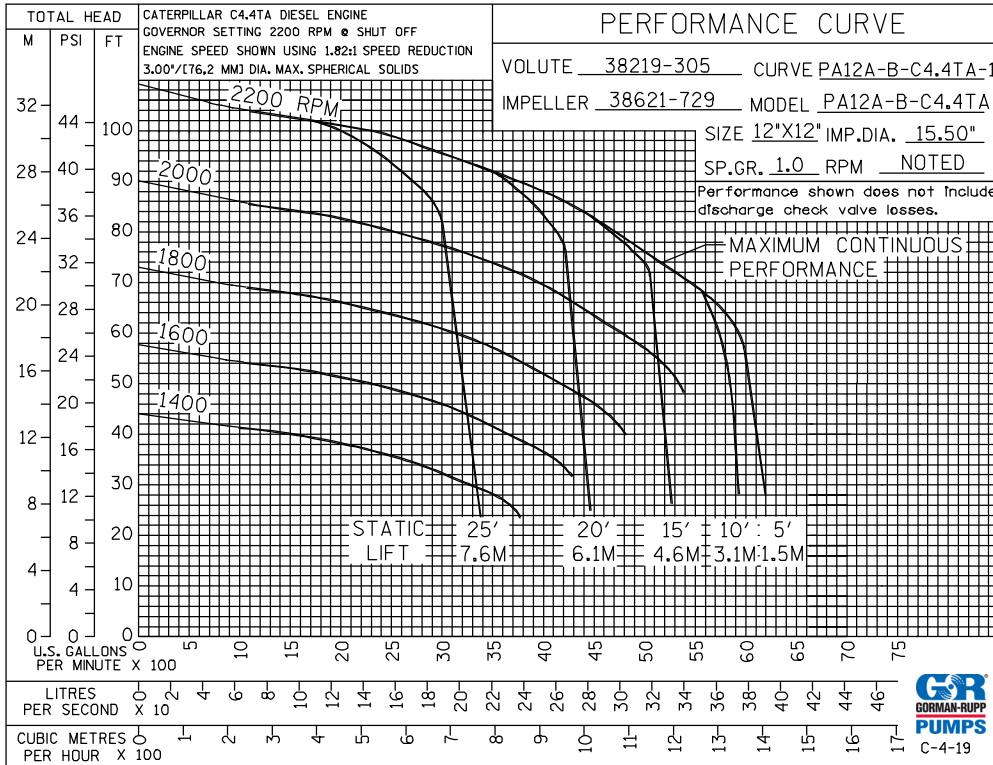
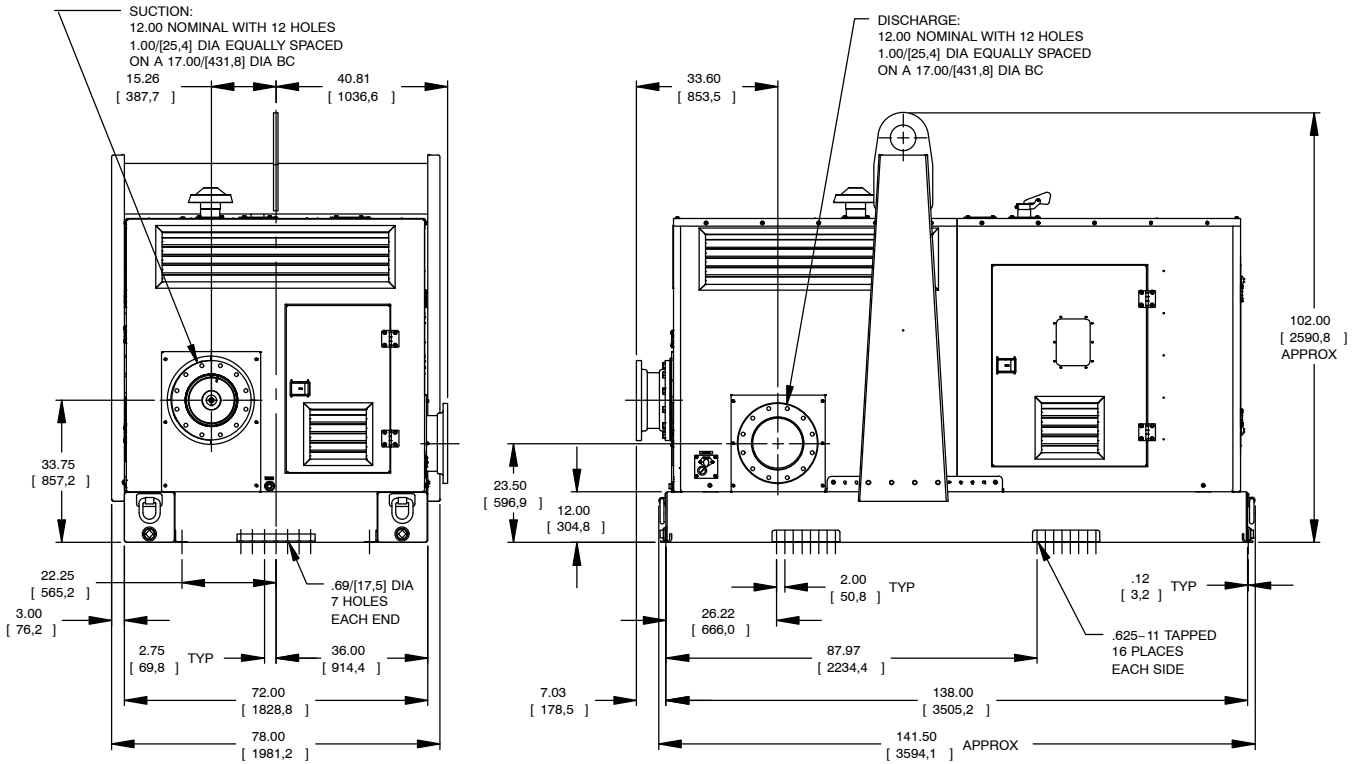
**SECTION CAT, PAGE 99**

APPROXIMATE  
DIMENSIONS and WEIGHTS

**NET WEIGHT:**  
**SHIPPING WEIGHT:**  
**EXPORT CRATE SIZE:**

**SKID BASE**

**8,340 LBS. (3783,0 KG.)**  
**8,340 LBS. (3783,0 KG.)**  
**788 CU. FT. (22,3 CU. M.)**



**GORMAN-RUPP PUMPS**

www.grpumps.com

Specifications Subject to Change Without Notice

Printed in U.S.A.