



**Sound Attenuated
Diesel Engine Driven
Environmental Silent Pump**
**Priming Assisted Centrifugal Pump
w/Autostart**
Model PA6D60C-C2.2TA S5-ESP /S1
Size 6" x 6"



Total Head		Capacity of Pump in U.S. Gallons per Minute (GPM) at Continuous Performance				
P.S.I.	Feet					
56.3	130	660	660	660	660	660
52.0	120	860	980	980	980	980
43.3	100	885	1265	1530	1560	1560
34.7	80	895	1280	1550	1780	2005
26.0	60	900	1290	1560	1795	2225
17.3	40	910	1300	1570	1805	2225
Suction Lift		25'	20'	15'	10'	5'

PUMP SPECIFICATIONS

Size: 6" x 6" (152 mm x 152 mm) Flanged.
Casing: Gray Iron 30.
 Maximum Operating Pressure 96 psi (662 kPa).*
Semi-Open Type, Two Vane Impeller: Ductile Iron 65-45-12.
 Handles 3" (76,2 mm) Diameter Spherical Solids.
Suction Spool: Gray Iron 30.
Impeller Shaft: Stainless Steel 17-4 PH.
Replaceable Wear Plate: Alloy Steel AR-400.
Bearing Housing: Gray Iron 30.
Seal Plate: Gray Iron 30.
Seal: Mechanical, Oil-Lubricated. Silicon Carbide Rotating Face. Silicon Carbide Stationary Seat. Fluorocarbon Elastomers (DuPont Viton® or Equivalent). Stainless Steel 18-8 Cage and Spring. Maximum Temperature of Liquid Pumped, 160°F (71°C).*
Shaft Sleeve: Stainless Steel 17-4 PH.
Priming Chamber: Gray Iron 30 Housing w/Stainless Steel Float and Linkage.
Discharge Check Valve: Ductile Iron Housing w/Buna-N Flapper.
Radial Bearing: Open Double Ball.
Thrust Bearing: Open Double Ball.
Bearing and Seal Cavity Lubrication: SAE 30 Non-Detergent Oil.
Gaskets: Vegetable Fiber.
O-Rings: Fluorocarbon and Buna-N.
Hardware: Standard Plated Steel.
Bearing and Seal Cavity Oil Level Sight Gauges.
**Consult Factory for Applications Exceeding Maximum Pressure and/or Temperature Indicated.*
Standard Equipment: Battery. Soundproof (EPA Average 71 dBA at 23 feet [7 meters] Under Load). Lightweight Aluminum Enclosure - Removable for Maintenance of Pump or Engine - w/Lockable Door Panels. High Speed (55 MPH/89 KM/H) Single Axle Pneumatic-Tired Wheel Kit w/ DOT-Approved Lights and Electric Brakes. Gear-Driven Air Compressor. Hoisting Bail. Combination Skid Base w/ Fuel Tank. Heated Priming Chamber. [Full Feature Control Panel](#) [Single Ball Type Float Switch](#).**
Optional Equipment: [Tandem Axle Over-the-Road Trailer](#) Transducer Liquid Level Sensor, Skid Base Kit.

**50 Ft. (15 m) Standard Length; Dual Switches and Alternate Cable Lengths Available From the Factory.



WARNING!

Do not use in explosive atmosphere or for pumping volatile flammable liquids.

ENGINE SPECIFICATIONS

Model: Caterpillar C2.2TA.
EPA Tier: Stage 5.
Type: Turbocharged, Aftercooled Four Cylinder, Diesel Engine.
Displacement: 134 Cu. In. (2,2 Liters).
Governor: Electronic.
Lubrication: Forced Circulation.
Air Cleaner: Dry Type.
Fuel Tank: 102 U.S. Gals. (386 liters).
Full Load Operating Time: 32 Hrs.
Starter: 12V Electric.
Standard Features: Muffler w/Guard and Weather Cap, DOC&DPF Exhaust After-Treatment System.
Engine Control Features: Padlockable Box with Throttle Control, Tachometer, Coolant Temperature, Oil Pressure, Voltage and Overstart Indicators/Shutdowns. Manual/Stop/Auto Keyswitch. Audible Startup Warning Delay. Fuel Level Display/Alarm/Shutdown.

CATERPILLAR PUBLISHED PERFORMANCE:

Maximum Gross BHP (Intermittent)
67 (50,0 kW) @ 2800 RPM



GORMAN-RUPP PUMPS

www.grpumps.com

Specifications Subject to Change Without Notice

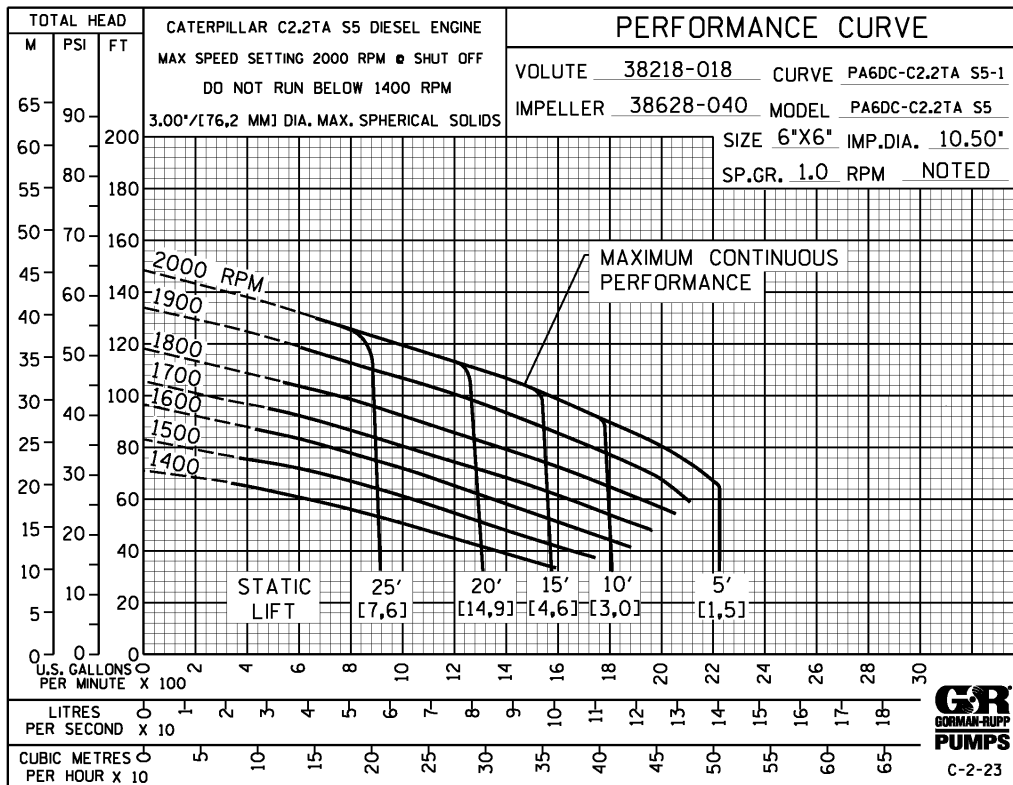
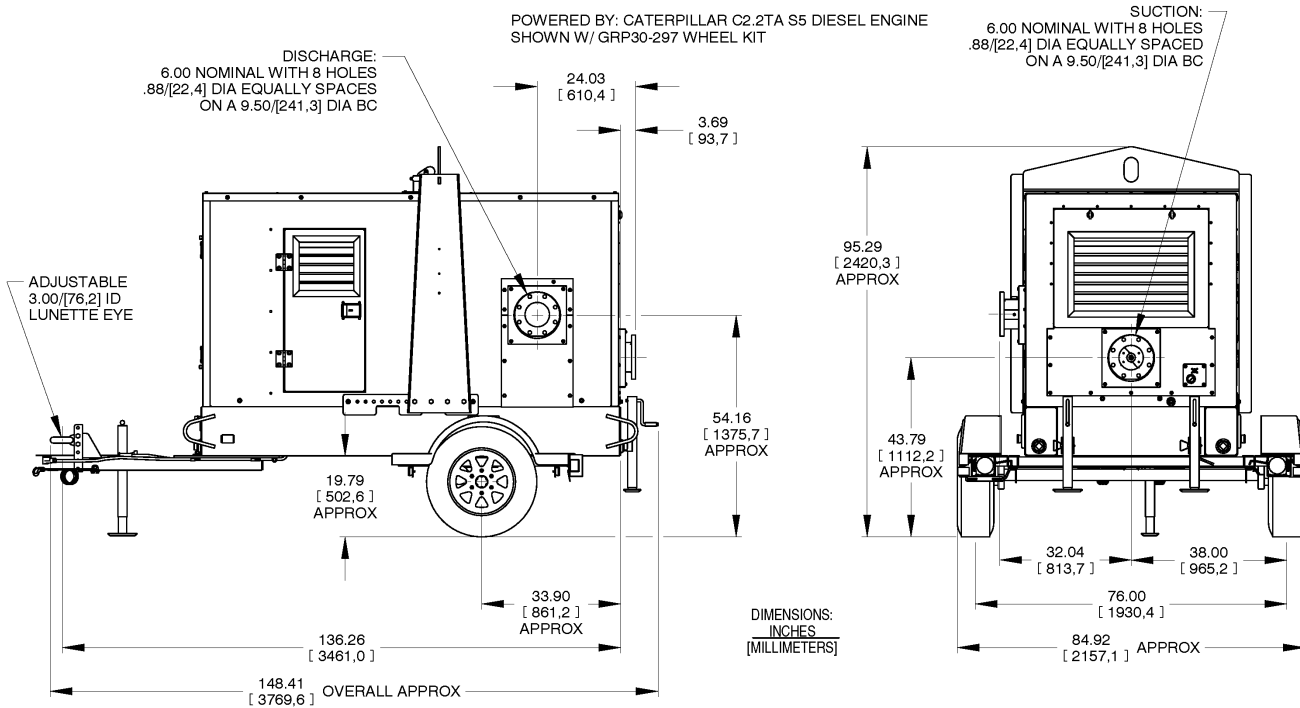
Printed in U.S.A.

Specification Data

SECTION CAT, PAGE 53

APPROXIMATE
DIMENSIONS and WEIGHTS

NET WEIGHT: 4400 LBS. (1996 K.G.)
SHIPPING DIMENSIONS: 760 CU. FT. (21,5 CU. M.)



GORMAN-RUPP PUMPS

www.grpumps.com

Specifications Subject to Change Without Notice

Printed in U.S.A.