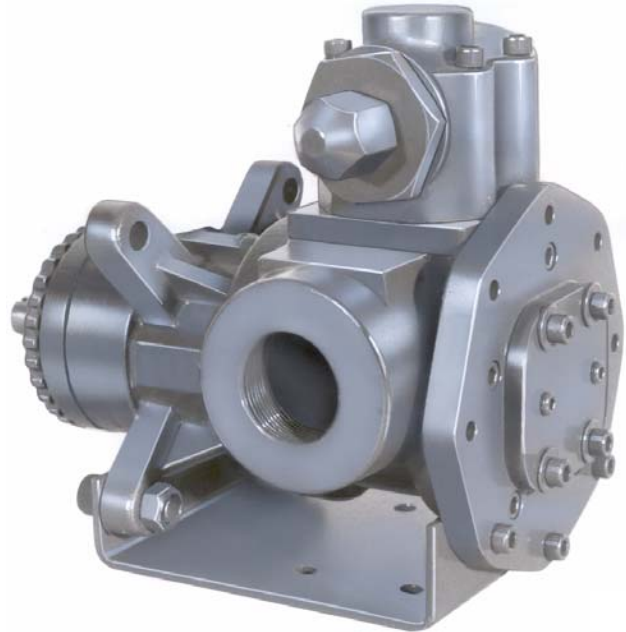


PUMP SPECIFICATION BULLETIN

**GHC SERIES
HEAVY DUTY COMPACT
ROTARY GEAR PUMP**



SHOWN AS FLANGE MOUNT



SHOWN WITH FOOT BRACKET

The GHC iron series is designed for applications in the operating ranges noted below. These units are available with head jackets for temperature control, carbon graphite bushings for low viscosity liquids, silicon carbide bushings for wear resistance, and numerous shaft seal options described on the following pages.

These units may be foot mounted or, by using a motor adaptor (see page 108), direct connected to NEMA "C" flange motors.

This heavy duty series provides superior rotor shaft support and an integral, maintenance-free radial/ thrust bearing for reduced deflection and wear.

FEATURES

*300 PSI CAPABILITY
BALL BEARING THRUST CONTROL
ROTOR END CLEARANCE EXTERNALLY
ADJUSTABLE
HIGH STRENGTH, COMPUTER
PROFILED GEARING FOR QUIET
OPERATION
C-FLANGE MOTOR ADAPTATION
MULTIPLE PORT POSITIONS*

OPERATING RANGE

CAPACITY (GPM): (3 TO 107)
[LPM]: [11 TO 405]

PRESSURE (PSI) : [0 TO 300]
[BAR]: [0 TO 21]

VISCOSITY (SSU): (28 TO 250,000)
[cSt]: [1 TO 55,000]

TEMPERATURE (F) : (-60° TO 350°)
[C] : [-51° TO 177°]

APPLICATIONS

USE WITH ANY CLEAN LIQUID
COMPATIBLE WITH CAST
IRON

- ★ BOOSTER SERVICE
- ★ CIRCULATING
- ★ FILTERING
- ★ LUBRICATING
- ★ TRANSFERRING
- ★ LOW PRESSURE
FLUID POWER

EXTER- IOR	ROTOR & IDLER	HOUSING PORTS	BUSHINGS	IDLER PIN	SHAFT	SHAFT SEALING		ROTATION	INTERNAL RELIEF VALVE	
						MECH. SEAL ●	LIPSEAL ■		MATERIAL	SETTING
CAST IRON	HIGH STRENGTH IRON	180° TAPPED	BRONZE	HARDENED STEEL	STEEL	VITON	BUNA-N	C.W.	DUCTILE IRON	75 PSI [5 BAR]

Standard Models

G H C 1 DC 3 - B
 | | | | | | | | | | | |
 GEAR DUTY DESIGN PORT SIZE HYDRAULIC SEAL STYLE
 SIZE SIZE

MODEL NUMBER	NOM. CAPACITY - SPEED				MAXIMUM				SHIPPING DATA	
	MAXIMUM		ALTERNATIVE		DIFFERENTIAL PRESSURE-PSI [BAR]			TEMP.	Weight	Volume
	GPM [LPM]	RPM 60 Hz [50 HZ]	GPM [LPM]	RPM ^③ 60 Hz [50 HZ]	BELOW 38 SSU [4 cSt]	38 TO 100 SSU [21 cSt]	100 TO 250,000 SSU [55,000 cSt]	°F [°C]		
GHC 1DC 3-B ● ① GHC 1DC 4-B ■ ①	9 [28]		6 [19]						29 [13,2]	0.6
GHC 1DE 3-B ● ① GHC 1DE 4-B ■ ①	11 [35]		7 [22]						30 [13,6]	0.6
GHC 1-1/2 GC 3-B ● GHC 1-1/2 GC 4-B ■	16 [50]		10 [32]						58 [26,4]	2.9
GHC 2 GC 3-B ● GHC 2 GC 4-B ■							300 [21]		58 [26,4]	2.9
GHC 1-1/2 GF 3-B ● GHC 1-1/2 GF 4-B ■	23 [73]	1750 [1460]	15 [47]	1150 [960]				● 350 [177]	58 [26,4]	2.9
GHC 2 GF 3-B ● GHC 2 GF 4-B ■					100 [7]	150 [10]			58 [26,4]	2.9
GHC 1-1/2 GH 3-B ● GHC 1-1/2 GH 4-B ■	31 [98]		20 [63]					■ 225 [107]	58 [26,4]	2.9
GHC 2 GH 3-B ● GHC 2 GH 4-B ■									58 [26,4]	2.9
GHC 1-1/2 GJ 3-B ● ② GHC 1-1/2 GJ 4-B ■ ②	38 [120]		25 [79]						58 [26,4]	2.9
GHC 2 GJ 3-B ● ② GHC 2 GJ 4-B ■ ②									58 [26,4]	2.9
GHC 2 JG 3-B ● GHC 2 JG 4-B ■									128 [58,2]	5.3
GHC 2-1/2 JG 3-B ● GHC 2-1/2 JG 4-B ■	40 [126]	1150 [960]	30 [95]	870 [725]					128 [58,2]	5.3
GHC 3 JG 3-B ● GHC 3 JG 4-B ■									128 [58,2]	5.3

STANDARD MODELS
CONTINUED

● MECHANICAL SEAL ■ LIPSEAL

NOTE: RECOMMENDED PORT SIZES ARE SHOWN IN **BOLDFACE**. EXAMPLE: **GHC 1 DC 3-B**

- ① 3450 [2875] RPM PERMISSIBLE TO 1,000 SSU [220 cSt] AND 100 PSI [7 BAR]
- ② PUMP LIMITED TO 200 PSI MAXIMUM PRESSURE.
- ③ MAXIMUM SPEED FOR AMMONIA MODELS.

MODEL NUMBER	NOM. CAPACITY - SPEED				MAXIMUM				SHIPPING DATA	
	MAXIMUM		ALTERNATIVE		DIFFERENTIAL PRESSURE-PSI [BAR]			TEMP.	Weight	Volume
	GPM [LPM]	RPM 60 Hz [50 HZ]	GPM [LPM]	RPM ^② 60 Hz [50 Hz]	BELOW 38 SSU [4 cSt]	38 TO 100 SSU [21 cSt]	100 TO 250,000 SSU [55,000 cSt]	°F [°C]		
GHC 2 JJ 3-B ● GHC 2 JJ 4-B ■	56 [177]	1150 [960]	42 [133]	870 [725]	100 [7]	150 [10]	300 [21]	350 [177]	132 [60]	5.3
GHC 2-1/2 JJ 3-B ● GHC 2-1/2 JJ 4-B ■									132 [60]	5.3
GHC 3 JJ 3-B ● GHC 3 JJ 4-B ■									132 [60]	5.3
GHC 2 JL 3-B ● GHC 2 JL 4-B ■	77 [243]	1150 [960]	58 [183]	870 [725]	100 [7]	150 [10]	300 [21]	350 [177]	132 [60]	5.3
GHC 2-1/2 JL 3-B ● GHC 2-1/2 JL 4-B ■									132 [60]	5.3
GHC 3 JL 3-B ● GHC 3 JL 4-B ■									132 [60]	5.3
GHC 2 JP 3-B ● ① GHC 2 JP 4-B ■ ①	107 [338]	1150 [960]	81 [256]	870 [725]	100 [7]	150 [10]	200 [14]	225 [107]	132 [60]	5.3
GHC 2-1/2 JP 3-B ● ① GHC 2-1/2 JP 4-B ■ ①									132 [60]	5.3
GHC 3 JP 3-B ● ① GHC 3 JP 4-B ■ ①									132 [60]	5.3

NOTE: RECOMMENDED PORT SIZES ARE SHOWN IN **BOLDFACE**. EXAMPLE: **GHC 1 DC 3-B**

- ① PUMP LIMITED TO 200 PSI MAXIMUM PRESSURE.
- ② MAXIMUM SPEED FOR AMMONIA MODELS.

SEAL LIMITATIONS:				
● MECH. SEAL OPTIONS	MAXIMUM INLET PRESSURE (PSI [BAR])		MAXIMUM VISCOSITY (SSU [cSt])	TEMPERATURE RANGE (°F [°C])
	NON-LUBRICATING LIQUID	LUBRICATING LIQUID		
STD,60T	100 [7]	150 [10.5]	15,000 [3250]	0 to 400 [-17 to 204]
61J	100 [7]	200 [14]	15,000 [3250]	0 to 400 [-17 to 204]
60A	100 [7]	150 [10.5]	15,000 [3250]	-50 to 225 [-45 to 107]
60B	100 [7]	150 [10.5]	15,000 [3250]	-50 to 210 [-46 to 99]
60D, 60N	200 [14]	350 [24]	25,000 [5417]	-75 to 500 [-60 to 260]
60F, 60P, 61K, 61L	200 [14]	300 [21]	25,000 [5417]	-20 to 400 [-29 to 204]
60J	150 [10.5]	150 [10.5]	50,000 [11,000]	0 to 400 [-17 to 204]
60K	150 [10.5]	150 [10.5]	50,000 [11,000]	-50 to 210 [-46 to 99]
60M	150 [11]	200 [14]	15,000 [3250]	0 to 400 [-17 to 204]
60Q	400 [30]	600 [40]	15,000 [3250]	0 to 400 [-17 to 204]
■ LIPSEAL OPTIONS	MAXIMUM INLET PRESSURE (PSI [BAR])		MAXIMUM VISCOSITY (SSU [cSt])	TEMPERATURE RANGE (°F [°C])
STD	15 [1]		25,000 [5,500]	-50 to 225 [-45 to 107]
65A	15 [1]		25,000 [5,500]	0 to 350 [-17 to 177]

BUSHING LIMITATIONS:				
Bushing Option	Optimal Viscosity Range	Temp Limit, °F[C]	Abrasives	Corrosives
STD, 40B, 40G, 40J,	500 TO 100,000 SSU	400 [205]	No	No
40C, 40F, 40K, 40N 70A, 70D, 70E	0.1 cPs to 2,000,000 SSU	400 [205]	No	Yes**
40U 70M	0.1 cPs to 2,000,000 SSU	400 [205]	Yes *	Yes**

Note: * Optional tungsten carbide pin is available
** Consult chemical compatibility charts for new applications.

NOTE: PROPER PUMP APPLICATION REQUIRES CONSIDERATION OF ADDITIONAL FACTORS. PLEASE REVIEW CHALLENGING APPLICATIONS IN SECTION 500 AND THE LIQUIDS LIST IN THE ROTARY GEAR REFERENCE GUIDE.

APPLICATION RECOMMENDATIONS:		
APPLICATION	OPTIONS REQUIRED (Select One from Each Row)	OPERATING LIMITATIONS
AMMONIA	25G, 25H, 25R, 25S, 25T 40N 60K 70E 90A	PRESSURE: 200 PSI MAX. 2/3 RATED SPEED. 4 FEET NPSHr
LP GAS	25G OR 25H 40F OR 40N 70D OR 70E	PRESSURE: 200 PSI MAX. 3 FEET NPSHr

Options

CATEGORY	STANDARD	OPTIONAL NUMBER & DESCRIPTION	
ROTATION	C.W. (VIEWED FROM SHAFT END)	01A	C.C.W.
		01B	BI-ROTATION ① ②
OPTIONS CONTINUED	CONSULT FACTORY FOR ADDITIONAL OPTIONS		HOUSING PORTS CONTINUED

① 180° PORT HOUSINGS WITH 2 RELIEF VALVES RECOMMENDED.

② DO NOT ALLOW DISCHARGE PRESSURE TO EXCEED RATED SEAL PRESSURE. SEE SEAL LIMITATION TABLE.

THE GORMAN-RUPP COMPANY • MANSFIELD, OHIO

Options (Continued)

CATEGORY	STANDARD	OPTIONAL NUMBER & DESCRIPTION		
HOUSING PORTS	180°		HYDRAULIC SIZE	PORT
		05U	DC, DE	1" NPT - 90°
			GC, GF, GH, GJ	1-1/2" NPT - 90°
			GC, GF, GH, GJ, JG, JJ, JL, JP	2" NPT - 90°
			JG, JJ, JL, JP	2-1/2" NPT - 90°
			JG, JJ, JL, JP	3" NPT - 90°
		05W	DC, DE	1" 90° - 125# FLANGED
			GC GF, GH, GJ	1-1/2" 90° - 125# FLANGED
			GC GF, GH, GJ	2" 90° - 125# FLANGED
			JG, JJ, JL, JP	3" 90° - 125# FLANGED
		05X	DC, DE	1" 90° - 250# FLANGED
			GC, GF, GH, GJ	1-1/2" 90° - 250# FLANGED
			JG, JJ, JL, JP	3" 90° - 250# FLANGED
		06D	DC, DE	1" 180° - 125# FLANGED
			GC, GF, GH, GJ	1-1/2" 180° - 125# FLANGED
			GC, GF, GH, GJ	2" 180° - 125# FLANGED
			JG, JJ, JL, JP	3" 180° - 125# FLANGED
		06E	DC, DE	1" 180° - 250# FLANGED
			GC, GF, GH, GJ	1-1/2" 180° - 250# FLANGED
			JG, JJ, JL, JP	3" 180° - 250# FLANGED
		07P	JG, JJ, JL, JP	3" - 11 BSP 90°
		07R	JG, JJ, JL, JP	3" - 11 BSP 180°
		07S	JG, JJ, JL, JP	80mm 25 BAR DIN FLG - 90°
		07T	JG, JJ, JL, JP	80 mm 25 BAR DIN FLG - 180°
		HOUSING PORT CLOCK POSITION	180° (3 SUCTION - 9 DISCHARGE) (VIEWED FROM SHAFT END)	① 90° (3-12)
	15A 12 - 9			
	15B 1:30 - 10:30			

OPTIONS
CONTINUED

CONSULT FACTORY FOR ADDITIONAL OPTIONS

① MUST HAVE SELECTED 90° OPTION FROM CATEGORY 05 (HOUSING PORTS) TO SELECT FROM THIS COLUMN.

Options (Continued)

CATEGORY	STANDARD	OPTIONAL NUMBER & DESCRIPTION		
RELIEF VALVE	LOW PRESSURE RELIEF VALVE DUCTILE IRON/VITON 90° HEAD MOUNT 180° HOUSING MOUNT	25A	HIGH PRESSURE	
		25C	LESS RELIEF VALVE	
		25D	2 VALVES - LOW PRESSURE ①	
		25E	2 VALVES - HIGH PRESSURE ①	
	FOR CRACKING PRESSURE RANGES REFER TO SECTION 500, PG 18 ②	25G	RETURN TO TANK - LOW PRESSURE, NEOPRENE O-RING	
		25H	RETURN TO TANK - HIGH PRESSURE, NEOPRENE O-RING	
		25J	LOW PRESSURE, TEFLON ENCAPSULATED O-RING	
		25K	HIGH PRESSURE, TEFLON ENCAPSULATED O-RING	
		25L	LESS RELIEF VALVE, TEFLON ENCAPSULATED O-RING	
		25R	LESS RELIEF VALVE, NEOPRENE O-RING	
		25S	LOW PRESSURE, NEOPRENE O-RING	
		25T	HIGH PRESSURE, NEOPRENE O-RING	
		GEAR TRIM	NO TRIM	35B
35C	C TRIM (VISCOSITY)			
35D	D TRIM (VISCOSITY)			
35X	CUSTOM TRIM			
		FOR VISCOSITY/TEMPERATURE TRIM CHART REFER TO SECTION 500, PAGE 20. (TRIM ACCORDING TO TEMPERATURE AND VISCOSITY; CONTACT DISTRIBUTOR OR FACTORY)		
HEAD IDLER IDLER BUSHING	CAST IRON HIGH STENGTH IRON BRONZE	40B	BRONZE IDLER GEAR, CARBON GRAPHITE IDLER BUSHING	
		40C	CARBON GRAPHITE IDLER BUSHING	
		40F	VITON O-RING HEAD, CARBON GRAPHITE IDLER BUSHING	
		40G	HEAD JACKET ③ ⑤	
		40J	HEAD JACKET, BRZ IDLER GEAR, CARBON GRAPHITE IDLER BSHG ③ ⑤	
		40K	HEAD JACKET, CARBON GRAPHITE IDLER BUSHING ③ ⑤	
		40N	NEOPRENE O-RING HEAD, CARBON GRAPHITE IDLER BSHG ④	
		40U	SILICON CARBIDE IDLER BUSHING	
		41B	BRONZE IDLER GEAR, SILICON CARBIDE IDLER BUSHING	
		OPTIONS CONTINUED		

CONSULT FACTORY FOR
ADDITIONAL OPTIONS

- ① 180° PORT HOUSINGS REQUIRED. MUST SELECT BI-ROTATION OPTION 01B.
- ② CONSULT FACTORY FOR 200-300 PSI APPLICATIONS FOR IN-LINE RELIEF VALVES.
- ③ LIMIT JACKET PRESSURE TO 150 PSIG.
- ④ NOT AVAILABLE IN "D" HYDRAULIC SIZE PUMPS.
- ⑤ D SIZE ONLY: NOT AVAILABLE WITH 180° PORT HOUSING AND 2 3/4" CENTERLINE FOOT BRACKET COMBINATION.

Options (Continued)

CATEGORY	STANDARD	OPTIONAL NUMBER & DESCRIPTION	
ROTOR / SHAFT	HIGH STRENGTH IRON / STEEL	50B	BRONZE/STEEL ⑤
SEAL	MECH. SEAL FRICTION DRIVE - CARBON, CERAMIC, VITON	60A	FRICTION DRIVE - CARBON, CERAMIC, BUNA-N
		60B	FRICTION DRIVE - CARBON, CERAMIC, NEOPRENE
		60D	POSITIVE DRIVE - CARBON, SiC, TEFLON ①
		60F	METAL BELLOWS - CARBON, SiC, TEFLON ENCAPSULATED ②
		60J	DOUBLE FRICTION DRIVE - CARBON, CERAMIC, VITON ⑥
		60K	AMMONIA DBL FRICTION DRIVE-CARBON, CERAMIC, NEO.① ③
		60M	G-R CARTRIDGE FRICTION DRIVE - CARBON, CERAMIC, VITON
		60N	G-R CARTRIDGE POSITIVE DRIVE - CARBON, SiC, TEFLON
		60P	G-R CARTRIDGE METAL BELLOWS - CARBON, SiC, TEFLON ENCAPSULATED
		60Q	BALANCED TYPE 1B - CARBON, NI-RESIST, VITON ④
		60T	EXT. FLUSH FRICTION DRIVE - CARBON, CERAMIC, VITON
		61J	FRICTION DRIVE - SiC, SiC, VITON
		61K	METAL BELLOWS - SiC, SiC, TEFLON, ENCAP. ②
		61L	G-R CARTRIDGE METAL BELLOWS-SiC, SiC, TEFLON ENCAPSULATED O-RING
		LIPSEAL - BUNA-N	65A
BACKHEAD / BUSHING	CAST IRON / BRONZE	70A	CARBON GRAPHITE SHAFT BUSHING
		70D	VITON O-RING BACKHEAD, CARBON GRAPHITE SHAFT BUSHING
		70E	NEOPRENE O-RING BACKHEAD, CARBON GRAPHITE SHAFT BUSHING ①
		70M	SILICON CARBIDE SHAFT BUSHING

OPTIONS
CONTINUED

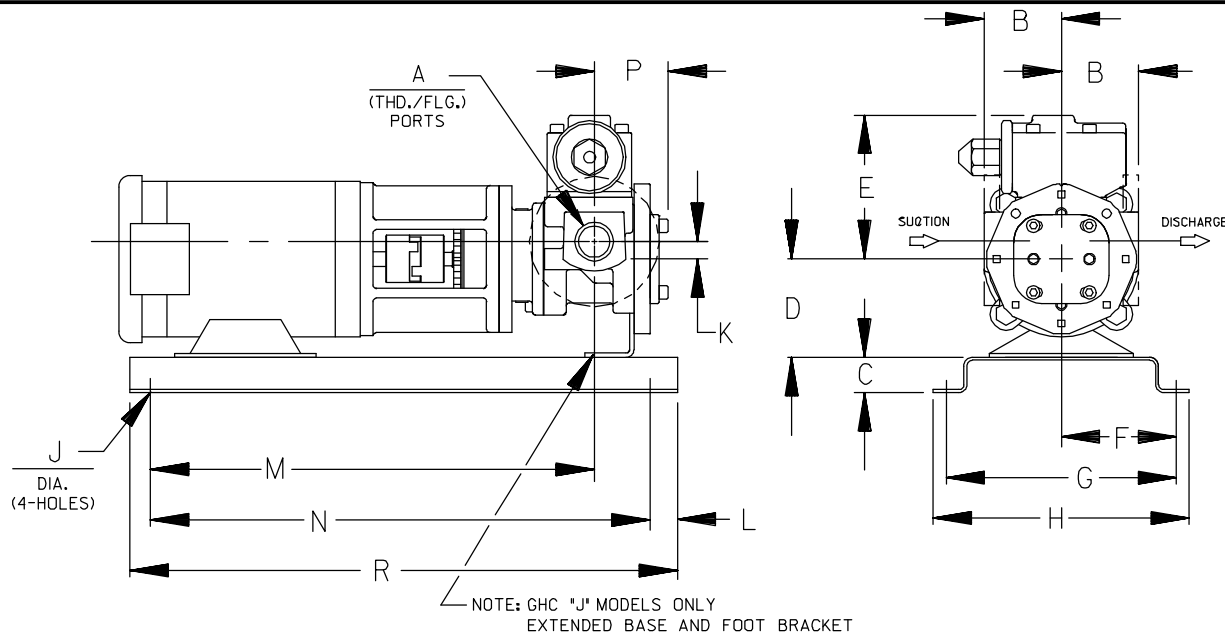
CONSULT FACTORY FOR ADDITIONAL OPTIONS

- ① NOT AVAILABLE IN "D" HYDRAULIC SIZE PUMPS.
- ② NOT AVAILABLE IN "D" AND "G" HYDRAULIC SIZE PUMPS.
- ③ AMMONIA: OPTION 90A REQUIRED.
- ④ FOR "D & G" HYDRAULIC SIZE ONLY, TYPE 2B IS USED IN PLACE OF TYPE 1B.
- ⑤ MAX VISCOSITY 15,000 SSU. MAX DIFFERENTIAL 100 PSI.
- ⑥ DUAL SEAL: RESERVOIR KIT RECOMMENDED.



GHC

DIRECT FLEX C-FLANGE DRIVE OPTION DIMENSIONS



CAD FILE NO.: 16652

PUMP MODEL	PUMP DIMENSIONS - INCHES[MILLIMETERS]															
	A	MOTOR FRAME	B	C	D	E	F	G	H	J	K	L	M	N	P	R
GHC D	1"	56C	2.50 † [64]	2.00 [51]	3.50 [89]	5.19 [132]	6.25 [159]	12.50 [318]	14.50 [368]	.56 [14]	.62 [16]	2.00 [51]	17.24 [438]	12.75 [324]	2.73 [69]	16.75 [425]
		143TC/145TC	2.75 * [70]										17.55 [446]			
		182C/184C	3.12 † [79]										18.80 [478]			
GHC G	1- 1/2"	56C	3.50 † [89]	2.00 [51]	4.50 [114]	6.00 [152]	6.25 [159]	12.50 [318]	14.50 [368]	.56 [14]	.62 [16]	2.00 [51]	19.42 [493]	12.75 [324]	3.35 [85]	16.75 [425]
		143TC/145TC	3.75 * [95]										19.73 [501]			
	2"	182C/184C	4.00 † [102]	21.86 [555]												
		213TC/215TC	5.25 [133]													
GHC J	2"	182TC/184TC	4.50 † [114]	4.00 [102]	4.50 [114]	9.06 [230]	9.50 [241]	19.00 [483]	21.00 [533]	.69 [18]	1.12 [28]	5.00 [127]	26.86 [682]	35.50 [902]	4.66 [118]	45.50 [1156]
		213TC/215TC	5.00 * [127]										27.75 [705]			
	2- 1/2"	213TC/215TC	6.00 † [152]													
		254TC/256TC	6.31 † [160]	33.74 [857]												

* STANDARD DIMENSION

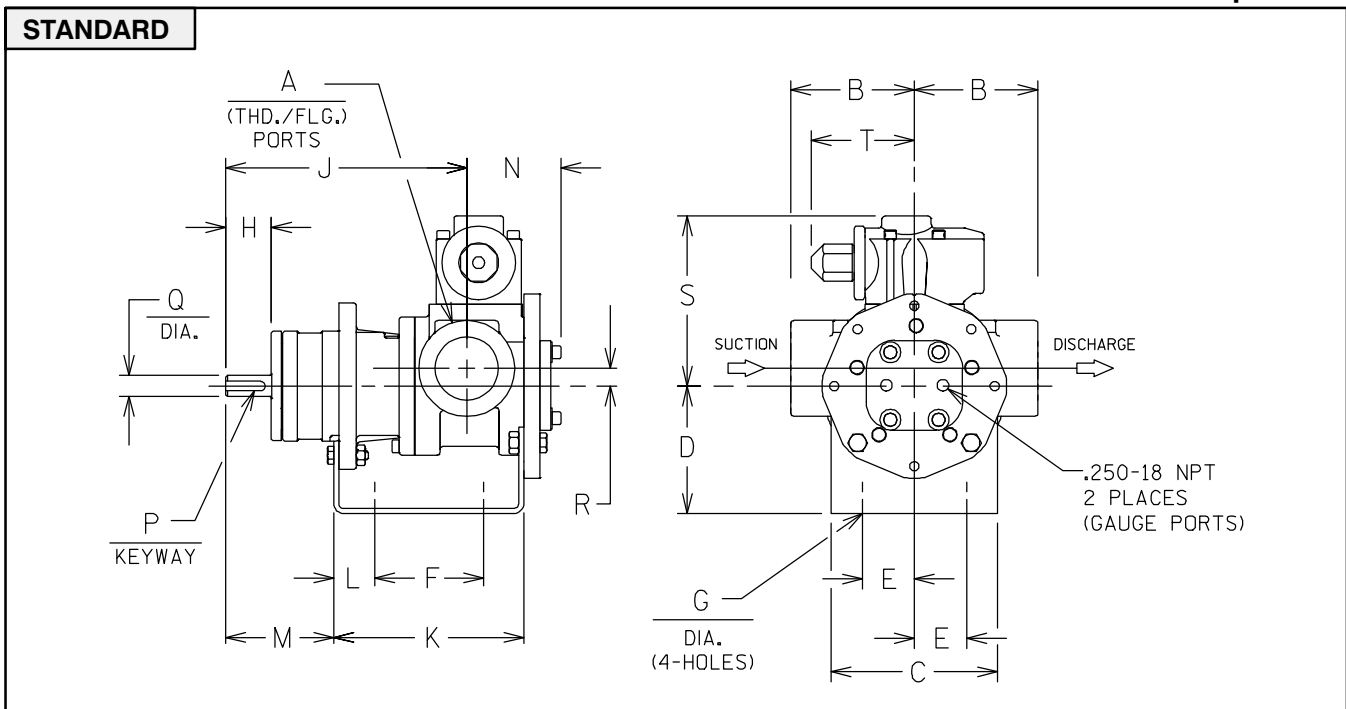
† PORTS ARE COMPATIBLE WITH 125# OR 250# ANSICAST IRON FLANGES. ALL OTHER PORTS ARE TAPPED NPT FOR ANSIPIPE. OPTIONAL (DIN) FLANGES OR TAPPED (BSP) PORTS AVAILABLE FOR EXPORT MARKET.

† 90° HOUSING

NOTE: CONSULT FACTORY FOR;
1. HORSEPOWERS & FRAMES NOT SHOWN
2. DRIP PAN BASES

REFERENCE: PUMP FOOT BRACKET OPTIONS

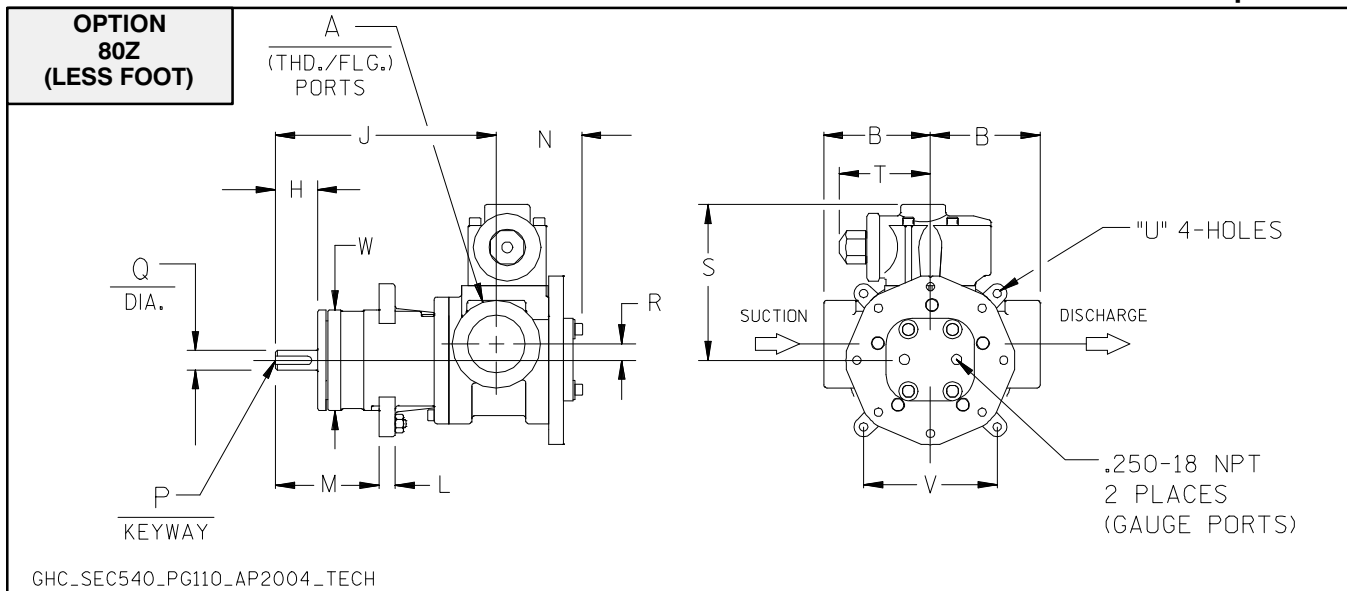
HYDRAULIC SIZE	MOTOR FRAME	PUMP OPTION
D	56C, 143TC, 145TC, 182C, 184C	80Y
G	56C, 143TC, 145TC, 182C, 184C	80Y
J	213TC, 215TC 254TC, 256TC	80X 80W



MODEL NUMBERS	PUMP DIMENSIONS – INCHES [MILLIMETERS]																	
	A	B	C	D	E	F	G	H	J	K	L	M	N	P	Q	R	S	T
GHC D	1"	2.50 † [64]	4.00 [102]	3.50* [89]	1.62 [41]	3.12 [79]	.41 [10]	1.16 [30]	6.19 [157]	5.04 [128]	.76 [19]	2.62 [66]	2.74 [70]	.12 X .75 [3 X 19]	.50 [13]	.62 [16]	5.19 [132]	3.58 [91]
		2.75 * [70]		4.50 [114]														
		3.19 † [81]		5.25 [133]														
		4.00 † [102]																
GHC G	1-1/2"	3.50 † [89]	5.88 [149]	3.50* [89]	1.62 [41]	4.00 [102]	.41 [10]	1.62 [41]	8.50 [216]	6.71 [170]	1.06 [27]	3.82 [97]	3.35 [85]	.19 X 1.25 [5 X 32]	.75 [19]	.62 [16]	6.00 [152]	3.62 [92]
		4.50 [114]		5.25 [133]														
	3.75 * [95]	6.25 [159]																
	4.00 † [102]																	
GHC J	2"	4.50 † [114]	6.88 [175]	4.50 [114]	2.88 [73]	4.25 [108]	.44 [11]	2.50 [64]	12.12 [308]	9.75 [248]	1.75 [44]	5.50 [140]	4.66 [118]	.25 X 2.00 [6 X 51]	1.00 [25]	1.12 [28]	9.06 [230]	6.75 [171]
		5.00 * [127]		5.25* [133]														
	6.00 † [152]	7.00 [178]																
	6.31 † [160]	8.00 [203]																
2-1/2"	6.00 † [152]																	
	3"	6.31 † [160]																

Continued —

- * STANDARD DIMENSION
- ▣ FLANGED DIMENSION
- † 90° HOUSING



MODEL NUMBERS	PUMP DIMENSIONS – INCHES [MILLIMETERS]														
	A	B	H	J	L	M	N	P	Q	R	S	T	U	V	W
GHC D	1"	2.50 † [64]	1.16 [30]	6.19 [157]	.44 [11]	2.80 [71]	2.74 [70]	12 X .75 [3 X 19]	.50 [13]	.62 [16]	5.19 [132]	3.58 [91]	.41 [10]	3.00 [76]	2.85 [72]
		2.75 * [70]													
		3.19 † [81]													
		4.00 † [102]													
GHC G	1-1/2"	3.50 † [89]	1.62 [41]	8.50 [216]	.62 [16]	4.00 [102]	3.35 [85]	.19 X 1.25 [5 X 32]	.75 [19]	.62 [16]	6.00 [152]	3.62 [92]	.53 [13]	4.75 [121]	3.85 [98]
		3.75 * [95]													
	2"	4.00 † [102]													
GHC J	2"	4.50 † [114]	2.50 [64]	12.12 [308]	.62 [16]	5.75 [146]	4.66 [118]	.25 X 2.00 [6 X 51]	1.00 [25]	1.12 [28]	9.06 [230]	6.75 [171]	.53 [13]	4.75 [121]	4.85 [123]
		5.00 * [127]													
	2-1/2"	6.00 † [152]													
	3"	6.31 † [160]													

- * STANDARD DIMENSION
- † FLANGED DIMENSIONS
- ‡ 90° HOUSING

GORMAN-RUPP
 ROTARY GEAR PUMPS

The Gorman-Rupp Company
 305 Bowman Street, Mansfield, Ohio 44903
 Phone: 419/755-1011 FAX: 419/755-1251

The Gorman-Rupp International Company
 P.O. Box 1217, Mansfield, Ohio 44901-1217
 Phone: 419/755-1011 FAX: 419/755-1266

Gorman-Rupp of Canada Ltd.
 70 Burwell Road
 St. Thomas, Ontario N5P3R7
 Phone: 519/631-2870 FAX: 519/631-4624

©Copyright by the Gorman-Rupp Company



PERFORMANCE CURVES JL

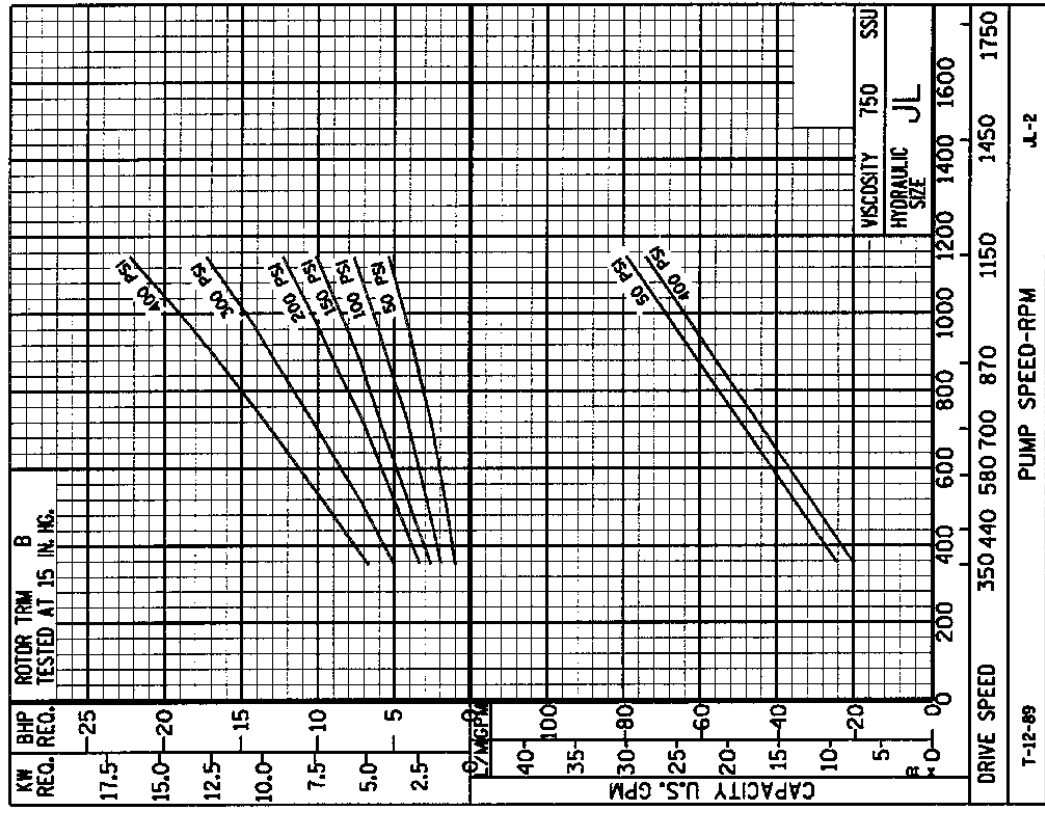
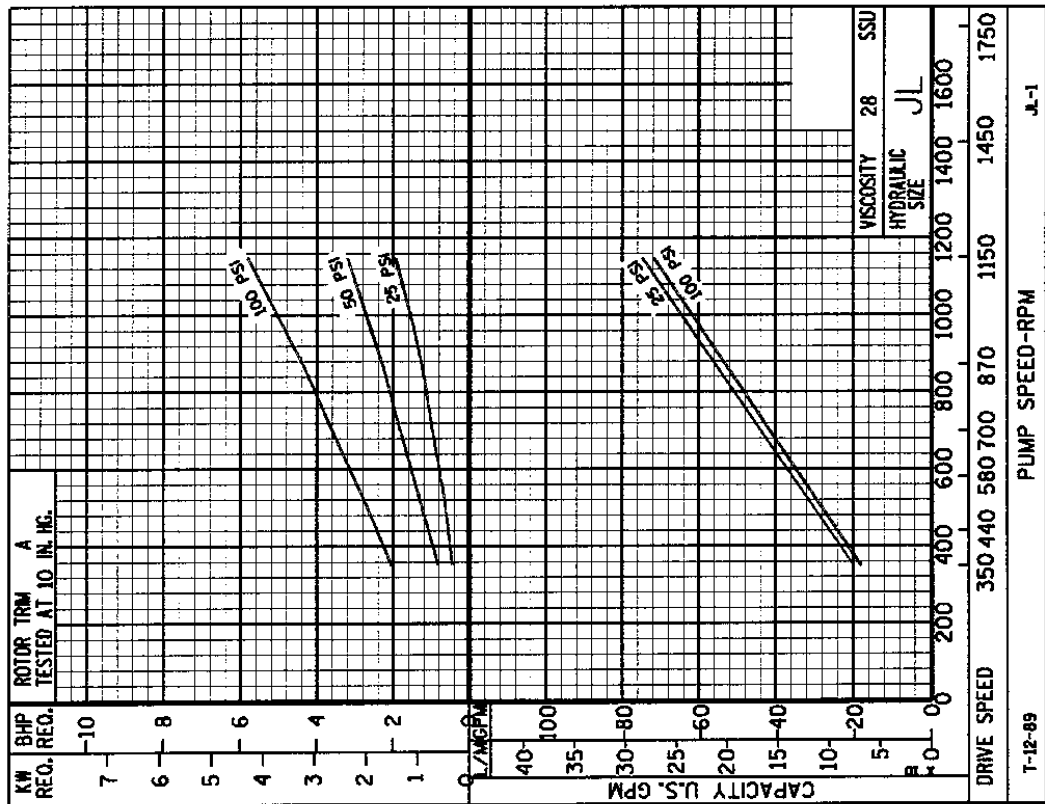
SPEED VS. CAPACITY/HORSEPOWER

SEC. 500

Page 152

Hydraulic Size

April 1998



THE GORMAN-RUPP COMPANY • MANSFIELD, OHIO
 GORMAN-RUPP OF CANADA LIMITED • ST. THOMAS, ONTARIO, CANADA

© Copyright by the Gorman-Rupp Co.

Printed in U.S.A.



PERFORMANCE CURVES JL

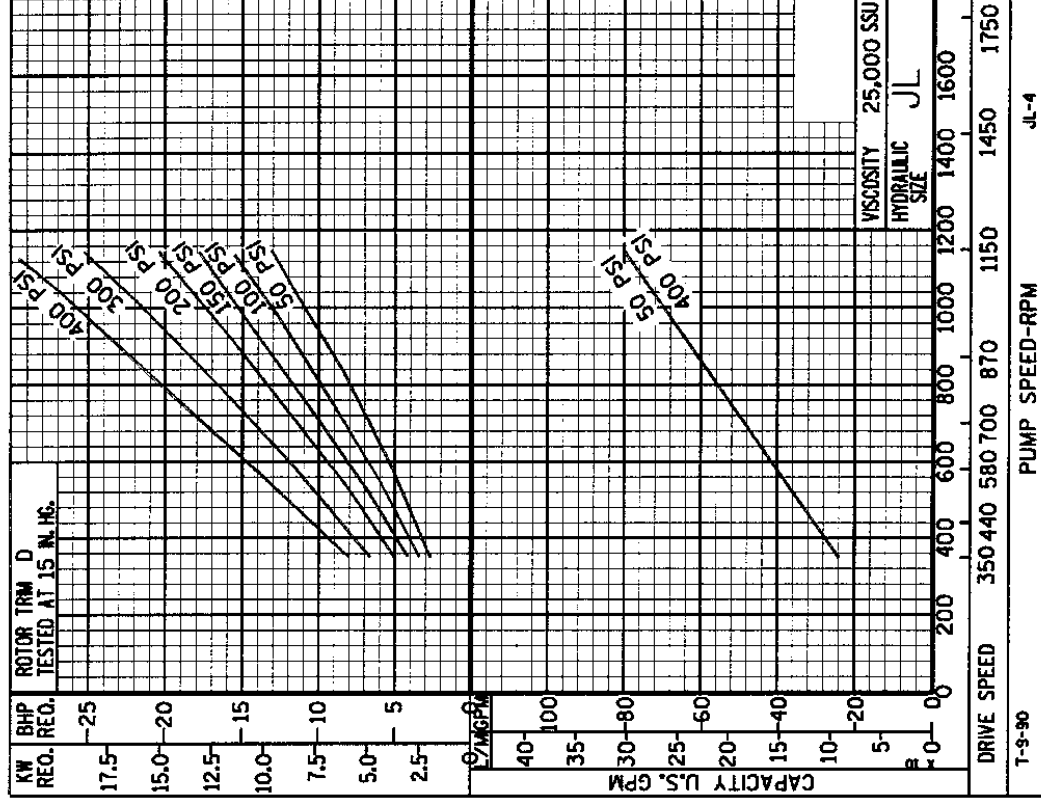
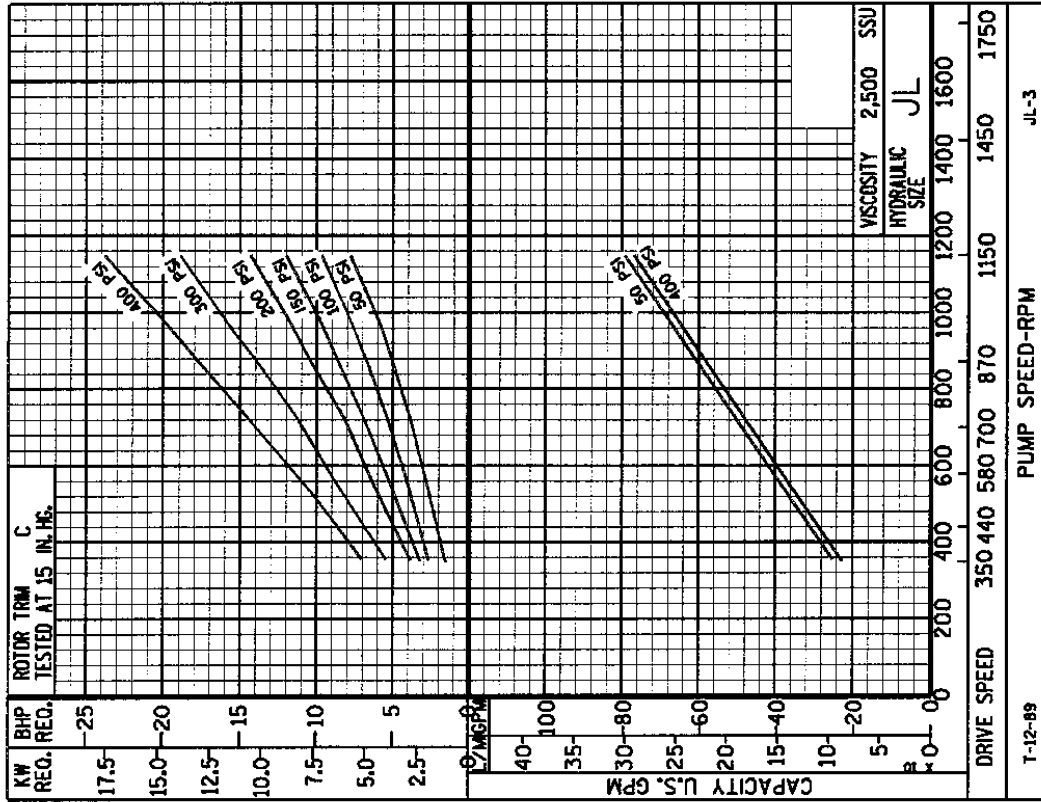
SPEED VS. CAPACITY/HORSEPOWER

SEC. 500

Page 153

Hydraulic
Size

April 1998



THE GORMAN-RUPP COMPANY • MANSFIELD, OHIO
 GORMAN-RUPP OF CANADA LIMITED • ST. THOMAS, ONTARIO, CANADA

© Copyright by the Gorman-Rupp Co.

Printed in U.S.A.



JL

PUMP HYDRAULIC SIZE CHART

SEC. 500

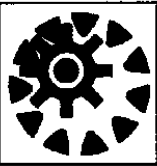
Page 154

April 1998

**77 GPM
1150 RPM**

NOMINAL		ROTOR TRIM	VISCOSITY (SSU)	N.I.P.R. (PSIA)	FRICTION PIPE LOSS (PSI/FT) (Based on Sch 40 Steel Pipe)					FULL BYPASS RELIEF VALVE PRESSURE (PSI)					CAPACITY (GPM) / H.P. REQUIRED										
CAP. GPM	SPEED RPM				PIPE DIAMETER					CRACKING PRESS. (PSI)					DIFFERENTIAL PRESSURE (PSI)										
					1 1/2"	2"	2 1/2"	3"	4"	LOW PRES R/V		HI PRES R/V			MEDIUM DUTY AND HEAVY DUTY				HEAVY DUTY ONLY						
							50	75	100	150	200	25	50	75	100	150	200	300	400						
77	1150	STD	28	4.3	.01	.01	.01	.01	.01	73	99	132			75.0	73.0	72.0	72.0							
			32		.13	.04	.02	.01	.01						2.0	3.2	4.5	5.8							
			38	4.3	.16	.05	.02	.01	.01	73	99	132	173			76.0	74.0	74.0	73.0	72.0					
			50		.19	.06	.03	.01	.01							2.1	3.4	4.7	6.0	8.8					
			70	4.3	.22	.07	.03	.01	.01	73	100	133	173	225			77.0	76.0	75.0	75.0	74.0	73.0			
			100		.25	.08	.03	.01	.01								2.4	3.7	5.0	6.2	9.0	12			
			150	4.3	.28	.09	.04	.02	.01	74	100	133	174	225			78.0	77.0	77.0	76.0	76.0	75.0	72.0	70.0	
			200		.31	.10	.04	.02	.01								2.7	4.1	5.3	6.5	9.1	12	17	22	
			300	4.3	.35	.11	.04	.02	.01	74	101	134	174	226			79.0	78.0	78.0	77.0	77.0	76.0	74.0	72.0	
			500		.38	.13	.06	.03	.01								3.6	4.9	6.0	7.6	9.8	12	17	22	
		750	4.3	.51	.19	.09	.04	.02	74	101	134	174	226			79.0	79.0	79.0	79.0	78.0	77.0	75.0	74.0		
		1,000		.68	.25	.12	.05	.02								4.2	5.4	6.6	7.7	10	12	17	22		
		2,000	4.8	1.35	.50	.25	.10	.04	75	103	136	176	228			79.0	79.0	79.0	79.0	79.0	78.0	77.0	76.0		
		3,500		2.36	.87	.43	.18	.06								6.3	7.4	8.5	9.7	12	14	19	24		
		5,000	5.1	3.37	1.24	.61	.26	.09	79	108	138	178	230			80.0	79.0	79.0	79.0	79.0	79.0	78.0	77.0		
		7,500		5.06	1.86	.92	.39	.13								8.4	9.5	11	12	14	17	21	26		
		10,000	5.5	6.74	2.48	1.22	.51	.17	83	113	142	182	234			80.0	80.0	79.0	79.0	79.5	79.0	78.0	78.0		
		15,000		10.1	3.72	1.83	.77	.26								10	12	12	14	17	19	23	28		
		20,000	5.8	13.5	4.96	2.44	1.02	.35	88	119	148	186	240			80.0	80.0	80.0	79.0	79.0	79.0	79.0	79.0		
		25,000		16.9	6.20	3.05	1.28	.43								12	13	14	16	18	21	25	30		
50,000	8.1	33.7	12.4	6.09	2.56	.86	94	125	154	192	246			80.0	80.0	79.0	79.0	79.0	79.0	78.0	78.0				
75,000		-	-	-	-	-								16	18	21	23	25	27	30	35				
100,000																									
150,000																									
200,000																									
250,000																									

(NOTE) For speeds not shown on the pump hydraulic charts, use pump performance curves or consult factory.



JL

PUMP HYDRAULIC SIZE CHART

SEC. 500

Page155

April 1998

58 GPM
870 RPM

NOMINAL		ROTOR TRIM	VISCOSITY (SSU)	N.I.P.R. (PSIA)	FRICTION PIPE LOSS (PSI/FT) (Based on Sch 40 Steel Pipe)					FULL BYPASS RELIEF VALVE PRESSURE (PSI)					CAPACITY (GPM) / H.P. REQUIRED												
CAP. GPM	SPEED RPM				PIPE DIAMETER					CRACKING PRESS. (PSI)					DIFFERENTIAL PRESSURE (PSI)												
					1 1/2"	2"	2 1/2"	3"	4"	LOW PRES R/V					HI PRES R/V					MEDIUM DUTY AND HEAVY DUTY				HEAVY DUTY ONLY			
							50	75	100	150	200	50	75	100	150	200	25	50	75	100	150	200	300	400			
58	870	STD	28	2.8	.01	.01	.01	.01	.01	63	88	115			55.0	54.0	54.0	53.0									
			32		.08	.03	.01	.01	.01						1.2	2.3	3.3	4.4									
			38	2.8	.10	.03	.02	.01	.01	63	90	117	167		56.0	56.0	55.0	54.0	53.0								
			50		.12	.04	.02	.01	.01						1.3	2.5	3.5	4.5	6.7								
			70	2.8	.14	.04	.02	.01	.01	64	91	119	168	220	58.0	57.0	56.0	56.0	55.0	53.0							
			100		.15	.05	.02	.01	.01						1.3	2.6	3.6	4.5	6.7	8.7							
			150	2.8	.18	.06	.03	.01	.01	65	92	121	168	220	59.0	58.0	58.0	57.0	57.0	56.0	54.0	52.0					
			200		.19	.06	.03	.01	.01						1.5	2.9	3.8	4.7	6.9	8.7	12	16					
			300	2.8	.21	.06	.03	.01	.01	66	93	123	169	221	59.0	59.0	59.0	58.0	58.0	57.0	56.0	55.0					
			500		.26	.10	.05	.02	.01						1.8	3.4	4.1	5.1	7.0	8.8	13	16					
				"B"	750	2.8	.38	.14	.07	.03	.01	67	94	125	169	221	60.0	60.0	60.0	59.0	58.0	58.0	58.0	57.0			
					1,000		.51	.19	.09	.04	.02						3.0	3.5	4.4	5.3	7.1	8.9	13	16			
					2,000	3.4	1.02	.38	.19	.08	.03	71	96	125	169	223	60.0	60.0	60.0	60.0	60.0	59.0	58.0	58.0			
				3,500	1.78		.66	.32	.14	.05						4.4	5.0	5.8	6.7	8.6	10	14	18				
				"C"	5,000	3.7	2.54	.94	.46	.19	.07	73	98	127	171	225	60.0	60.0	60.0	60.0	60.0	60.0	59.0	58.0			
					7,500		3.81	1.40	.69	.29	.10						5.7	6.7	7.6	8.6	11	12	15	20			
					10,000	4.1	5.08	1.87	.92	.39	.13	75	100	129	173	227	60.0	60.0	60.0	60.0	60.0	60.0	59.0	58.0			
					15,000		7.61	2.80	1.38	.58	.20						6.8	8.0	9.0	9.8	12	13	17	21			
					20,000	4.4	10.2	3.74	1.84	.77	.26	79	104	129	175	227	60.0	60.0	60.0	60.0	60.0	59.0	59.0	58.0			
					25,000		12.7	4.67	2.30	.96	.33						8.2	8.9	9.8	11	13	15	18	22			
		"D"	50,000	6.6	25.4	9.34	4.59	1.93	.65	83	108	133	179	231	60.0	60.0	60.0	60.0	60.0	59.0	59.0	58.0					
			75,000		38.1	14.0	6.88	2.89	.98						10	11	13	14	16	18	22	26					
			100,000	9.0	50.8	18.7	9.18	3.85	1.30	87	112	137	183	235	60.0	60.0	60.0	60.0	60.0	59.0	59.0	58.0					
			150,000		-	-	-	-	-						12	14	15	16	19	21	25	29					
			200,000																								
		250,000																									

(NOTE) For speeds not shown on the pump hydraulic charts, use pump performance curves or consult factory.

