



**GMS SERIES**  
**MEDIUM DUTY STANDARD**  
**S & T HYDRAULIC SIZE**  
**ROTARY GEAR PUMP**



**MODEL GMS6SU3**  
**SHOWN WITH OPTIONAL**  
**180° HOUSING**

The GMS iron, high capacity series is designed for applications in the operating ranges noted below. These units are ideal for bulk handling of a variety of liquids. For temperature control, backhead and housing jackets are standard; head jackets are available. Also available are carbon graphite bushings for low viscosity liquids, silicon carbide bushings for wear resistance, and carbide or positive drive shaft seals.

For continuous service, or for handling difficult liquids, see the heavy duty GHS section.

For belt drive applications, a pedestal bearing is required.

**FEATURES**

*THRUST CONTROLLED PUMP  
 ELEMENTS*

*HIGH STRENGTH, COMPUTER  
 PROFILED GEARING FOR QUIET  
 OPERATION*

*SEAL AREA FULLY JACKETED FOR  
 TEMPERATURE CONTROL.*

*EXCEPTIONAL SEAL VERSATILITY.*

**OPERATING RANGE**

CAPACITY (GPM) : (40 TO 600)  
 [LPM] : [151 TO 2270]

PRESSURE (PSI) : [0 TO 100]  
 [BAR] : [0 TO 7]

VISCOSITY (SSU) : (28 TO 250,000)  
 [cSt] : [1 TO 55,000]

TEMPERATURE (F) : (-60° TO 500°)  
 [C] : [-51° TO 260°]

**APPLICATIONS**

USE WITH ANY CLEAN LIQUID  
 COMPATIBLE WITH CAST  
 IRON

- ★ BOOSTER SERVICE
- ★ CIRCULATING
- ★ FILTERING
- ★ LUBRICATING
- ★ TRANSFERRING

EXTER- IOR	ROTOR & IDLER	HOUSING PORTS	BUSHINGS	IDLER PIN	SHAFT	SHAFT SEALING		ROTATION	INTERNAL RELIEF VALVE	
						MECH. SEAL ●	PACKING ■		MATERIAL	SETTING
CAST IRON	HIGH STRENGTH IRON	90° 125# FLG	BRONZE	HARDENED STEEL	STEEL	FLUORO <sup>①</sup> CARBON NI-RESIST	CARBON FIBER	C.W.	CAST IRON	75 PSI [5 BAR]

## Standard Models

**G M S 4 SU 3 - B**  
 | | | | | | | | | |  
 GEAR DUTY DESIGN PORT HYDRAULIC SEAL STYLE  
 SIZE SIZE

MODEL NUMBER	NOM. CAPACITY - SPEED		MAXIMUM			TEMP.	SHIPPING DATA	
	MAXIMUM		DIFFERENTIAL PRESSURE-PSI [BAR]				°F [°C]	Weight
	GPM [LPM]	RPM	BELOW 38 SSU 14 cSt	38 TO 100 SSU [21 cSt]	100 TO 250,000 SSU [55,000 cSt]	LBS [KG]		CU. FT.
<b>GMS 3 SR3-B</b> ● ■ <b>GMS 3 SR4-B</b> ■ ■	202 [765]	350	50 [3.5]	75 [5.2]	100 [7]	400° [204]  500° [260]	515 [234]	17.3
<b>GMS 4 SR3-B</b> ● ■ <b>GMS 4 SR4-B</b> ■ ■								
<b>GMS 6 SR3-B</b> ● ■ † <b>GMS 6 SR4-B</b> ■ ■ †								
<b>GMS 3 SU3-B</b> ● ■ <b>GMS 3 SU4-B</b> ■ ■								
<b>GMS 4 SU3-B</b> ● ■ <b>GMS 4 SU4-B</b> ■ ■	337 [1276]	350	50 [3.5]	75 [5.2]	100 [7]	400° [204]  500° [260]	515 [234]	17.3
<b>GMS 6 SU3-B</b> ● ■ † <b>GMS 6 SU4-B</b> ■ ■ †								
<b>GMS 5 TU3-B</b> ● ■ <b>GMS 5 TU4-B</b> ■ ■								
<b>GMS 6 TU3-B</b> ● ■ <b>GMS 6 TU4-B</b> ■ ■	600 [2270]	350	50 [3.5]	75 [5.2]	100 [7]	400° [204]  500° [260]	715 [324]	17.3

● MECHANICAL SEAL

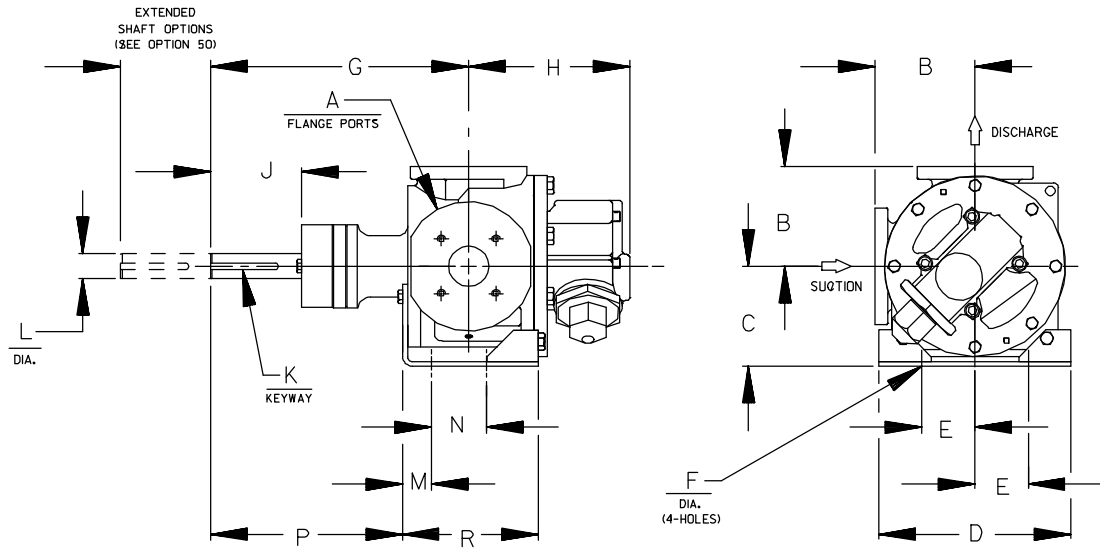
■ PACKING

■ PORTS ARE COMPATIBLE WITH 125# ANSI CAST IRON FLANGES.

† 180° DEGREE HOUSING

\* Note: Verify chemical compatibility

① DUPONT VITON® OR EQUIVALENT



CAD FILE NO.: 17221A

PUMP MODEL	PUMP DIMENSIONS - INCHES [MILLIMETERS]														
	A	B	C	D	E	F	G	H	J	K	L	M	N	P	R
GMS S	3.00*	7.75 [197]	7.75 [197] *	8.25 [210]	4.12 [105]	.69 [18]	20.00 [508]	12.49 [317]	6.90 [178]	.50 [13]	1.94 [49]	2.88 [73]	4.25 [108]	14.00 [356]	11.41 [290]
	4.00*	8.25 [210]								x					
	6.00*	9.00 [229] †	8.75 [222]	5.00 [127]											
GMS T	5.00*	9.56 [243]	9.50 [241]	12.00 [304,8]	5.00 [127]	.69 [18]	20.70 [526]	12.41 [315]	7.00 [178]	.62 [16]	2.44 [62]	.81 [21]	6.25 [159]	16.45 [418]	8.50 [216]
	6.00*	9.52 [244]								x					
	6.00*	9.75 [248] †	4.62 [117]												

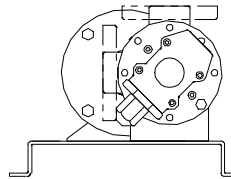
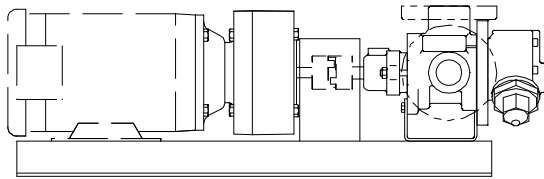
\* STANDARD DIMENSION

† 180° HOUSING

**THE GORMAN-RUPP COMPANY • MANSFIELD, OHIO**  
**GORMAN-RUPP OF CANADA LIMITED • ST. THOMAS, ONTARIO, CANADA**

## GRR REDUCER C-FLANGE FLEX DRIVE OPTIONS

(Drive Assembly Number Includes Base, Coupling, Guard and Gear Reducer, But **NOT** the Motor)



CAD FILE NO.: 16573

PUMP MODEL	RPM @ 1750	RPM @ 1150	REDUCER ①		FRAME	MTG.FT. OPTION REQ.	DRIVE ASSY NO.	
				MAX HP @ 1750				MAX HP @ 1150
GMS S	343	225	5.10:1	20.00	13.20	254TC/256TC	STD	90253-004
	344	226	5.08:1	30.00	19.80	284TC/286TC	STD	90253-006
	355	233	4.93:1	60.00	39.60	324TC	STD	90253-008
	283	186	6.19:1	20.00	13.20	254TC/256TC	STD	90253-014
	287	189	6.09:1	30.00	19.80	284TC/286TC	STD	90253-016
	276	181	6.35:1	60.00	39.60	324TC	STD	90253-018
	179	117	9.80:1	10.00	6.60	213TC	STD	90253-024
	206	135	8.50:1	20.00	13.20	254TC	STD	90253-026
				20.00	13.20	256TC	STD	90253-027
	198	130	8.83:1	30.00	19.80	284TC	STD	90253-028
				30.00	19.80	286TC	STD	90253-029
	120	79	14.55:1	10.00	6.60	213TC	STD	90253-034
	125	82	14.00:1	30.00	19.80	254TC	STD	90253-036
				30.00	19.80	256TC	STD	90253-037
105	69	16.66:1	7.81	5.16	184TC	STD	90253-044	
			17.71:1	16.48	10.88	213TC	STD	90253-046
99	65	17.81:1	26.41	17.43	254TC	STD	90253-048	
GMS T	279	186	6.19:1	20.00	13.20	254TC/256TC	STD	90253-104
	287	189	6.09:1	30.00	19.80	284TC/286TC	STD	90253-106
	276	181	6.35:1	60.00	39.60	324TC	STD	90253-108
				60.00	39.60	326TC	STD	90253-109
				60.00	39.60	364TC	STD	90253-110
	179	117	9.80:1	10.00	6.60	213TC	STD	90253-114
	206	135	8.50:1	20.00	13.20	254TC/256TC	STD	90253-116
	198	130	8.83:1	30.00	19.80	284TC	STD	90253-118
				30.00	19.80	286TC	STD	90253-119
	199	131	8.78:1	60.00	39.60	324TC	STD	90253-120
	119	79	14.55:1	10.00	6.60	213TC	STD	90253-124
	125	82	14.00:1	30.00	19.80	254TC/256TC	STD	90253-126
				30.00	19.80	284TC	STD	90253-128
	104	69	16.66:1	7.81	5.16	184TC	STD	90253-134
17.71:1				16.48	10.88	213TC	STD	90253-136
97	65	17.81:1	26.41	17.43	254TC/256TC	STD	90253-138	

① Listed reducer horsepower rated for Standard Service (8-10 hrs/day). For Light Service (3-5 hrs/day) multiply maximum rated horsepower by 1.1. For Heavy Service (16-24 hrs/day) multiply maximum rated horsepower by 0.9.

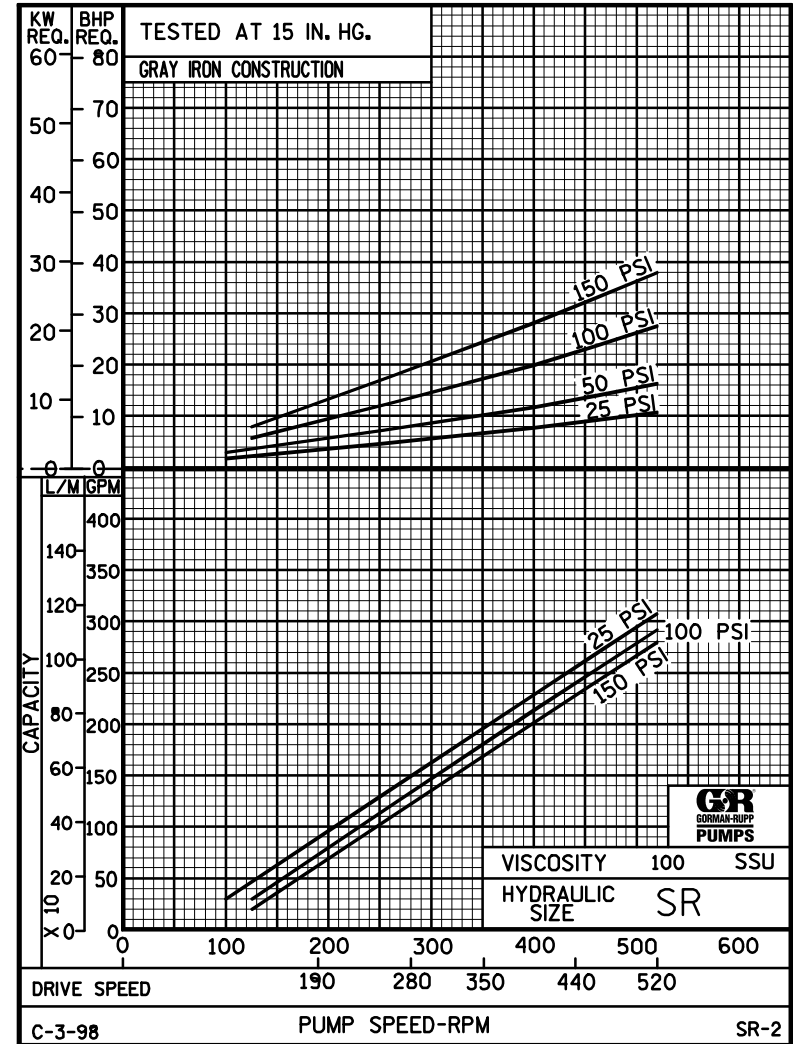
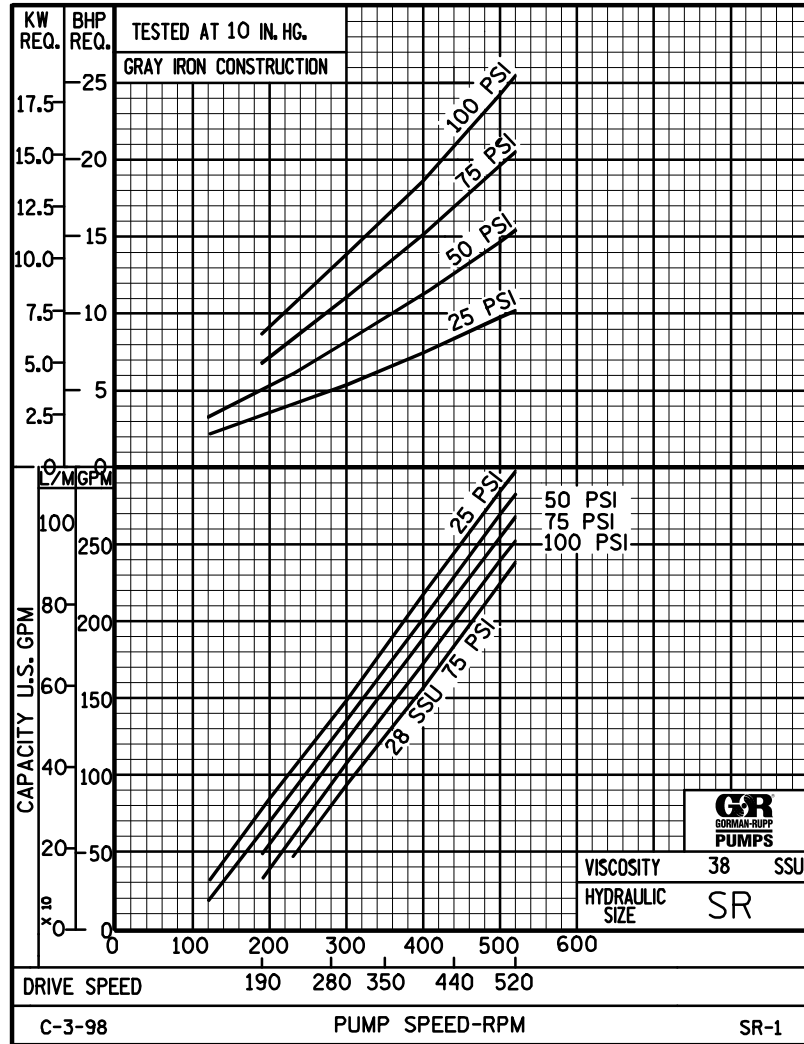
NOTE: CONSULT FACTORY FOR OPTIONS NOT SHOWN.



# PERFORMANCE CURVES

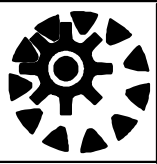
## SPEED VS. CAPACITY/HORSEPOWER

# SR

 Hydraulic Size


THE GORMAN-RUPP COMPANY • MANSFIELD, OHIO  
GORMAN-RUPP OF CANADA LIMITED • ST. THOMAS, ONTARIO, CANADA

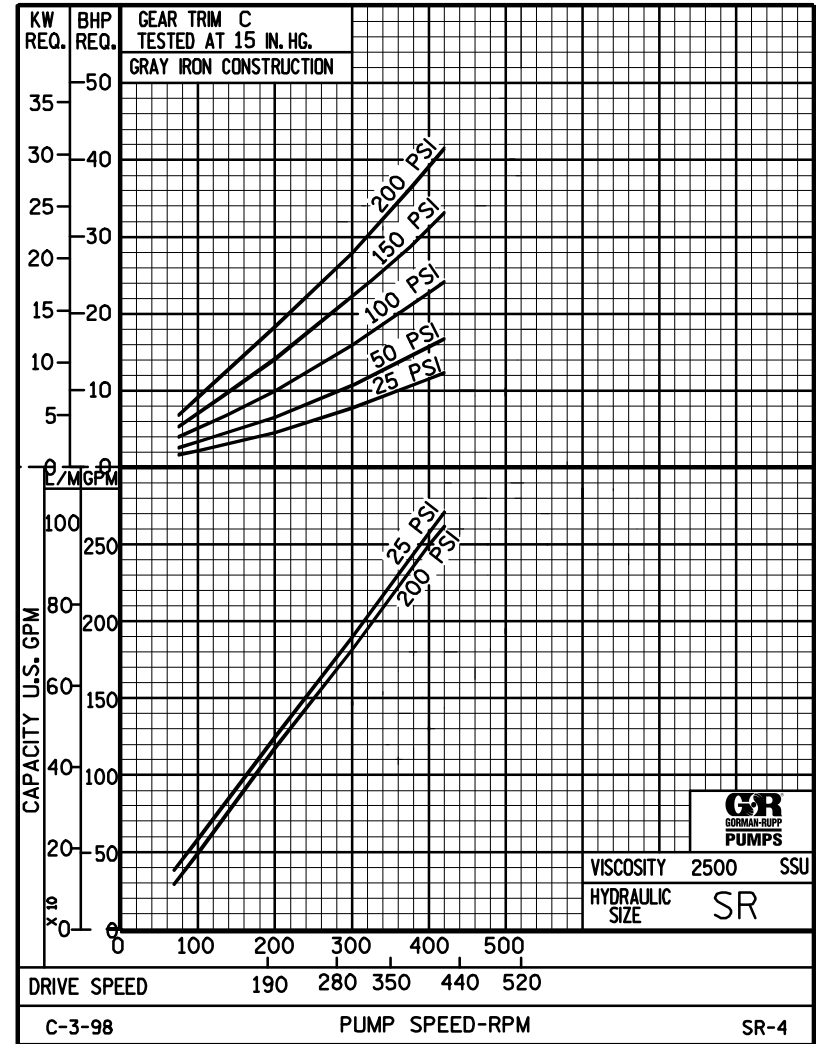
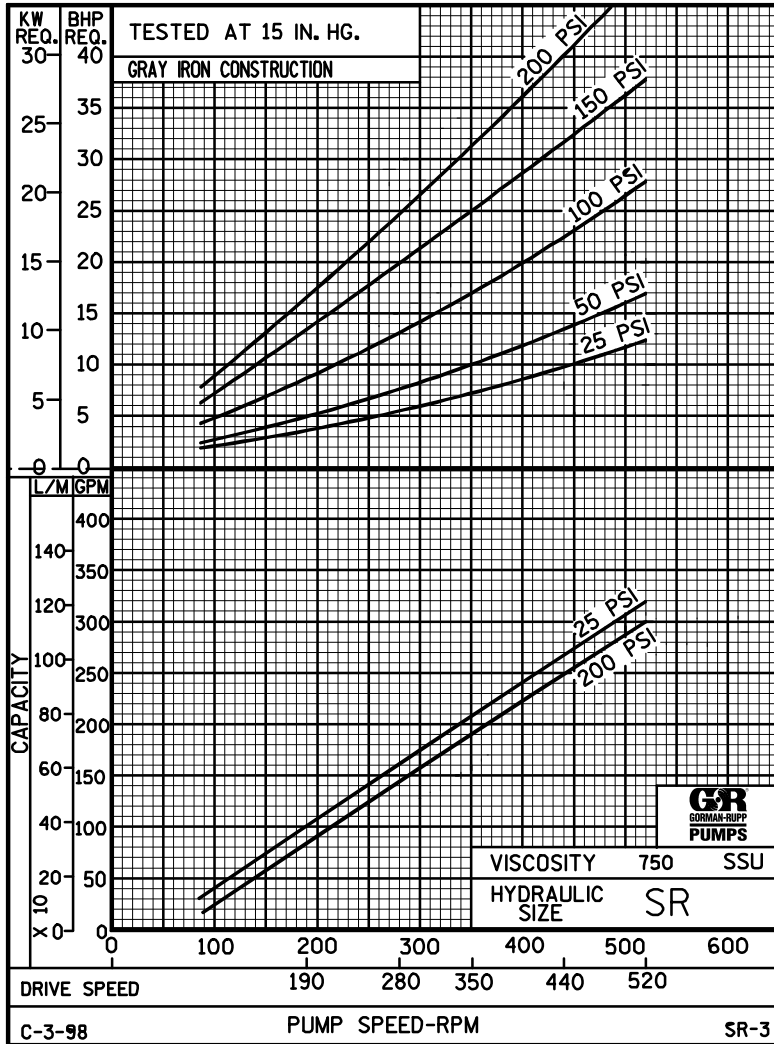
Printed in U.S.A.



# PERFORMANCE CURVES

## SPEED VS. CAPACITY/HORSEPOWER

# SR

 Hydraulic Size


THE GORMAN-RUPP COMPANY • MANSFIELD, OHIO  
 GORMAN-RUPP OF CANADA LIMITED • ST. THOMAS, ONTARIO, CANADA

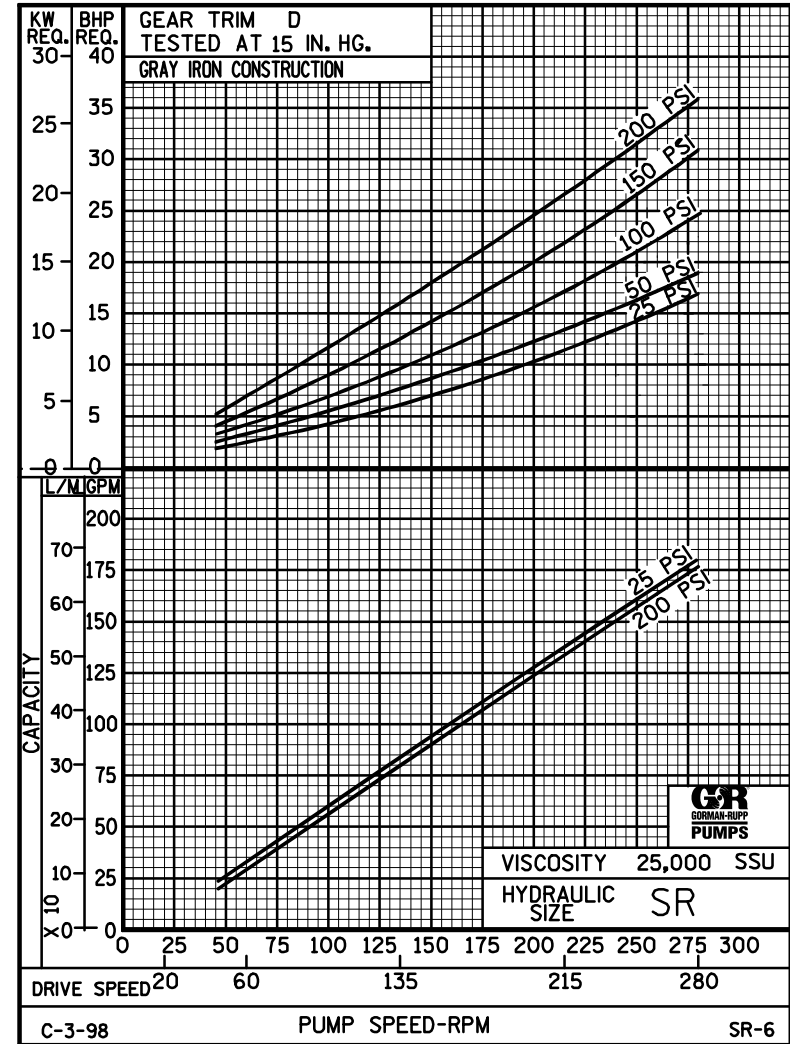
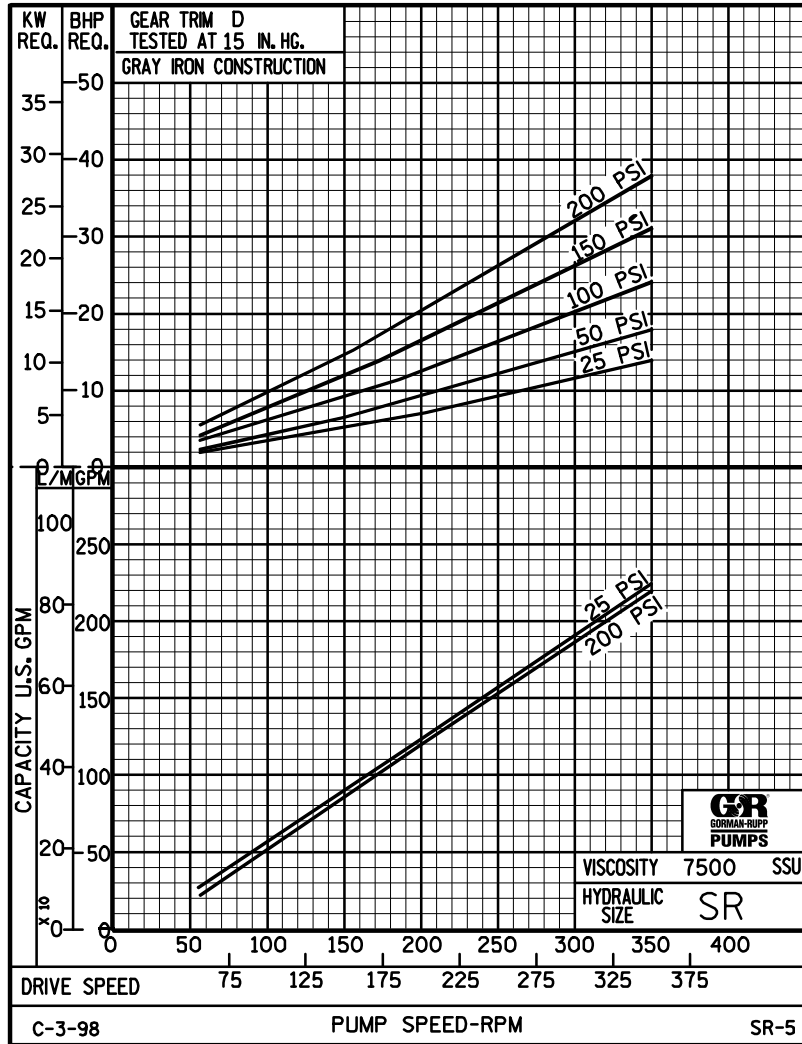
Printed in U.S.A.



# PERFORMANCE CURVES

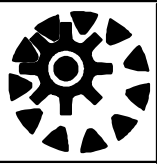
## SPEED VS. CAPACITY/HORSEPOWER

# SR

 Hydraulic Size


THE GORMAN-RUPP COMPANY • MANSFIELD, OHIO  
GORMAN-RUPP OF CANADA LIMITED • ST. THOMAS, ONTARIO, CANADA

Printed in U.S.A.

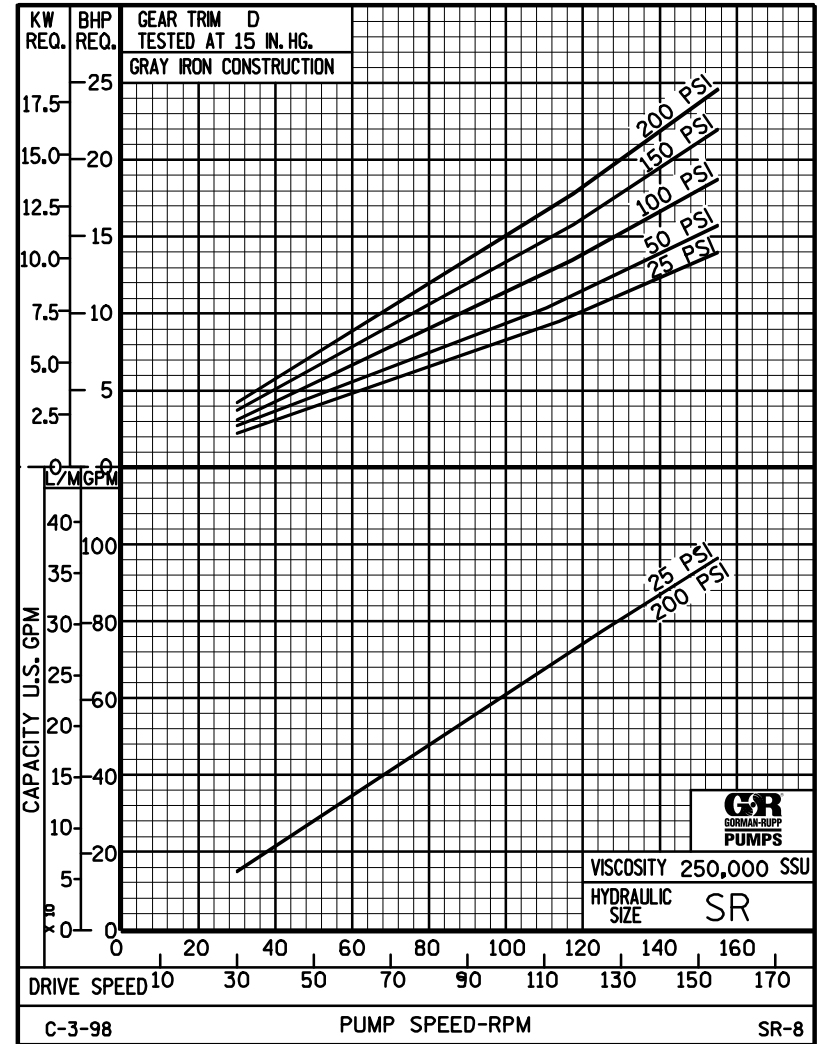
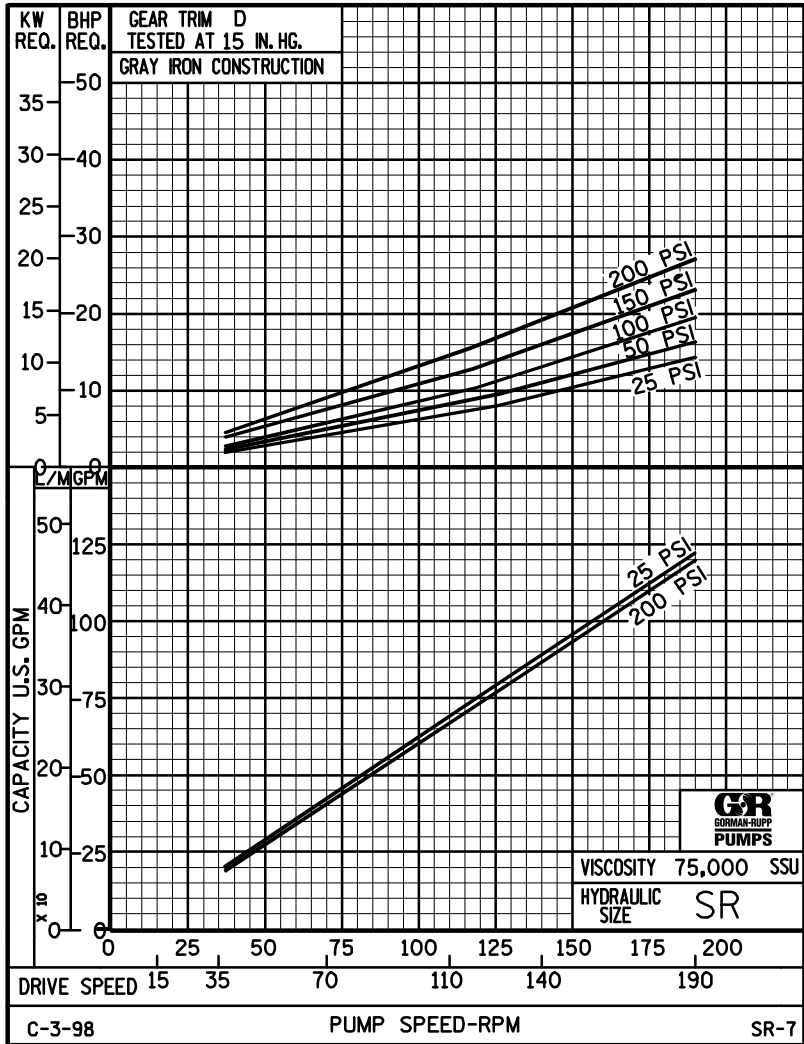


# PERFORMANCE CURVES

## SPEED VS. CAPACITY/HORSEPOWER

# SR

Hydraulic Size



THE GORMAN-RUPP COMPANY • MANSFIELD, OHIO  
GORMAN-RUPP OF CANADA LIMITED • ST. THOMAS, ONTARIO, CANADA

Printed in U.S.A.



# SR

## PUMP HYDRAULIC SIZE CHART

SEC. 500

Page 131.1

February 2025

**338 GPM**  
**520 RPM**

NOMINAL		VISCOSITY		N.I.P.R.	FRICTION PIPE LOSS (PSI/FT) <small>(Schedule 40 Steel Pipe)</small>					CAPACITY (GPM)				H.P. REQUIRED						
GPM	RPM	ROTOR TRIM	(SSU)	(PSIa)	PIPE DIAMETER					MEDIUM-DUTY & HEAVY-DUTY				HEAVY-DUTY ONLY						
					2½"	3"	4"	5"	6"	DIFFERENTIAL PRESSURE (PSI)										
										25	50	75	100	150	200	300	400			
338	520	STD	28	5.5	0.32	0.1	0.03	0.01	-	297	286	275								
			32		0.33	0.11	0.03	0.01	-	8.8	14	19								
			38	5.5	0.35	0.12	0.03	0.01	-	298	287	276	266	256						
			50		0.38	0.13	0.03	0.01	-	8.8	14	19	25	36						
			70	5.5	0.42	0.14	0.04	0.01	0.01	301	290	281	272	258						
			100		0.46	0.16	0.04	0.01	0.01	8.8	14	20	25	36						
			150	5.5	0.5	0.18	0.05	0.02	0.01	307	300	282	281	259	237					
			200		0.54	0.19	0.05	0.02	0.01	9.5	15	21	25	36	46					
			300	5.5	0.6	0.21	0.06	0.02	0.01	326	320	318	311	309	306					
			500		0.69	0.25	0.07	0.02	0.01	11	17	22	26	37	47					
			750	5.5	0.79	0.28	0.06	0.02	0.01	333	330	327	325	321	317					
			1,000		0.87	0.22	0.08	0.03	0.01	12	17	22	27	37	47					
		2,000	7.7	1	0.45	0.15	0.06	0.03	343	342	341	339	335	331						
		3,500		2	0.79	0.26	0.11	0.05	17	21	26	31	41	50						
		5,000	"C"																	
		7,500																		
		10,000																		
		15,000																		
		20,000																		
		25,000																		
50,000	"D"																			
75,000																				
100,000																				
150,000																				
200,000																				
250,000																				

(NOTE) For speeds not shown on the pump hydraulic charts, consult factory.



# SR

## PUMP HYDRAULIC SIZE CHART

SEC. 500

Page 131.2

February 2025

**285 GPM**  
**440 RPM**

NOMINAL		VISCOSITY		N.I.P.R.	FRICTION PIPE LOSS (PSI/FT) <small>(Schedule 40 Steel Pipe)</small>					CAPACITY (GPM)				H.P. REQUIRED					
GPM	RPM	ROTOR TRIM	(SSU)	(PSIa)	PIPE DIAMETER					MEDIUM-DUTY & HEAVY-DUTY				HEAVY-DUTY ONLY					
					2½"	3"	4"	5"	6"	DIFFERENTIAL PRESSURE (PSI)									
										25	50	75	100	150	200	300	400		
285	440	STD	28	3.9	0.23	0.07	0.02	0.01	-	247	238	230							
			32		0.24	0.08	0.02	0.01	-	6.8	11	16							
			38	3.9	0.25	0.09	0.02	0.01	-	247	239	231	221	211					
			50		0.28	0.09	0.03	0.01	-	7.5	11	16	21	26					
			70	3.9	0.31	0.11	0.03	0.01	-	249	240	232	222	212					
			100		0.34	0.12	0.03	0.01	-	7.1	12	16	21	27					
			150	3.9	0.37	0.13	0.04	0.01	0.01	253	245	240	230	220	210				
			200		0.40	0.14	0.04	0.01	0.01	7.6	12	16	22	28	36				
			300	3.9	0.45	0.16	0.04	0.02	0.01	258	259	255	250	244	238				
			500		0.52	0.19	0.05	0.01	0.01	8.2	13	17	23	29	36				
		750	3.9	0.59	0.14	0.05	0.02	0.01	268	266	263	260	257	254					
		1,000		0.45	0.19	0.06	0.03	0.01	9.7	14	18	24	30	37					
		2,000	5.5	0.90	0.38	0.13	0.05	0.02	291	289	288	285	282	278					
		3,500		1.58	0.66	0.22	0.09	0.04	13	17	21	25	33	41					
		5,000	6.6	2.26	0.95	0.32	0.13	0.06	292	291	290	289	287	284					
		7,500		3.38	1.42	0.48	0.19	0.09	16	21	25	30	38	46					
		10,000																	
		15,000																	
		20,000																	
		25,000																	
50,000																			
75,000																			
100,000																			
150,000																			
200,000																			
250,000																			

(NOTE) For speeds not shown on the pump hydraulic charts, consult factory.



# SR

## PUMP HYDRAULIC SIZE CHART

SEC. 500

Page 131.3

February 2025

**228 GPM**  
**350 RPM**

NOMINAL		VISCOSITY		N.I.P.R.	FRICTION PIPE LOSS (PSI/FT) <small>(Schedule 40 Steel Pipe)</small>					CAPACITY (GPM)				H.P. REQUIRED					
GPM	RPM	ROTOR TRIM	(SSU)	(PSIa)	PIPE DIAMETER					MEDIUM-DUTY & HEAVY-DUTY				HEAVY-DUTY ONLY					
					2½"	3"	4"	5"	6"	DIFFERENTIAL PRESSURE (PSI)									
										25	50	75	100	150	200	300	400		
228	350	STD	28	2.7	0.15	0.05	0.01	-	-	188	180	173							
			32		0.16	0.05	0.01	-	-	5.1	8.7	12							
			38	2.7	0.17	0.06	0.01	-	-	189	182	175	167	160					
			50		0.18	0.06	0.02	0.01	-	5.1	8.8	12	16	18					
			70	2.7	0.20	0.07	0.02	0.01	-	192	188	179	170	161					
			100		0.23	0.08	0.02	0.01	-	5.3	8.9	12	16	18					
			150	2.7	0.25	0.09	0.02	0.01	-	198	191	186	180	173	166				
			200		0.27	0.10	0.03	0.01	-	5.8	9.1	13	16	18	26				
			300	2.7	0.30	0.11	0.03	0.01	-	215	211	209	204	190	185				
			500		0.36	0.13	0.03	0.01	-	6.5	9.5	13	17	18	27				
		750	2.7	0.27	0.11	0.04	0.02	0.01	223	221	218	214	212	209					
		1,000		0.36	0.15	0.05	0.02	0.01	7.3	11	14	18	23	29					
		2,000	3.8	0.72	0.30	0.10	0.04	0.02	230	229	228	226	223	219					
		3,500		1.26	0.53	0.18	0.07	0.03	8.8	12	15	19	25	32					
		5,000	4.6	1.80	0.76	0.26	0.10	0.05	232	231	231	229	226	224					
		7,500		2.71	1.14	0.38	0.16	0.07	12	15	18	22	29	35					
		10,000	5.7	3.61	1.51	0.51	0.21	0.10	232	232	232	230	228	226					
		15,000		5.41	2.27	0.77	0.31	0.15	15	18	21	24	31	37					
		20,000	7.3	7.22	3.03	1.02	0.41	0.20	235	234	233	233	231	229					
		25,000		9.02	3.79	1.28	0.52	0.25	19	22	25	28	35	42					
50,000																			
75,000																			
100,000																			
150,000																			
200,000																			
250,000																			

(NOTE) For speeds not shown on the pump hydraulic charts, consult factory.



# SR

## PUMP HYDRAULIC SIZE CHART

SEC. 500

Page 131.4

February 2025

**180 GPM**  
**280 RPM**

NOMINAL		VISCOSITY		N.I.P.R	FRICTION PIPE LOSS (PSI/FT) <small>(Schedule 40 Steel Pipe)</small>					CAPACITY (GPM)				H.P. REQUIRED					
GPM	RPM	ROTOR TRIM	(SSU)	(PSIa)	PIPE DIAMETER					MEDIUM-DUTY & HEAVY-DUTY				HEAVY-DUTY ONLY					
					2½"	3"	4"	5"	6"	25	50	75	100	DIFFERENTIAL PRESSURE (PSI)					
										150	200	300	400						
180	280	STD	28	1.8	0.09	0.03	0.01	-	-	145	136	130							
			32		0.10	0.03	0.01	-	-	4.0	6.9	9.8							
			38	1.8	0.11	0.04	0.01	-	-	146	137	131	124	117					
			50		0.12	0.04	0.01	-	-	4.2	7.1	9.8	13	15					
			70	1.8	0.13	0.05	0.01	-	-	149	140	134	128	119					
			100		0.15	0.05	0.01	0.01	-	4.3	7.2	9.9	13	15					
			150	1.8	0.17	0.06	0.02	0.01	-	155	148	142	135	128	121				
			200		0.18	0.06	0.02	0.01	-	4.4	7.4	10.0	13	16	21				
			300	1.8	0.20	0.07	0.02	0.01	-	172	168	164	159	156	153				
			500		0.24	0.06	0.02	0.01	-	4.6	7.6	10	13	16	22				
		750	1.8	0.21	0.09	0.03	0.01	0.01	178	175	172	169	166	164					
		1,000		0.28	0.12	0.04	0.02	0.01	4.8	7.7	10	13	18	22					
		2,000	2.5	0.57	0.24	0.08	0.03	0.02	183	182	181	180	175	171					
		3,500		1.00	0.42	0.14	0.06	0.03	6.4	9.1	12	14	20	25					
		5,000	3.1	1.42	0.60	0.20	0.08	0.04	186	185	184	183	181	179					
		7,500		2.14	0.90	0.30	0.12	0.06	8.6	11	14	17	22	27					
		10,000	3.8	2.85	1.20	0.40	0.16	0.08	185	185	184	183	181	180					
		15,000		4.27	1.79	0.60	0.25	0.12	11	14	17	19	24	29					
		20,000	4.9	5.70	2.39	0.81	0.33	0.16	185	185	184	183	181	180					
		25,000		7.12	2.99	1.01	0.41	0.20	13	16	19	21	27	32					
50,000	5.9	14.25	5.98	2.02	0.82	0.39	184	184	184	184	184	184							
75,000		21.37	8.97	3.02	1.23	0.59	20	24	27	31	36	42							
100,000	7.2	28.50	11.95	4.03	1.64	0.78	184	184	184	183	181	184							
150,000		42.75	17.93	6.05	2.46	1.17	30	34	39	45	51	57							
200,000																			
250,000																			

(NOTE) For speeds not shown on the pump hydraulic charts, consult factory.



# SR

## PUMP HYDRAULIC SIZE CHART

SEC. 500

Page 131.5

February 2025

**130 GPM**  
**200 RPM**

NOMINAL		VISCOSITY		N.I.P.R.	FRICTION PIPE LOSS (PSI/FT) <small>(Schedule 40 Steel Pipe)</small>					CAPACITY (GPM)				H.P. REQUIRED				
GPM	RPM	ROTOR TRIM	(SSU)	(PSIa)	PIPE DIAMETER					MEDIUM-DUTY & HEAVY-DUTY				HEAVY-DUTY ONLY				
					DIFFERENTIAL PRESSURE (PSI)													
					2½"	3"	4"	5"	6"	25	50	75	100	150	200	300	400	
<b>130</b>	<b>200</b>	<b>STD</b>	28	1.3	0.05	0.02	-	-	-	97	89	81						
			32		0.05	0.02	-	-	-	2.8	4.8	7.0						
			38	1.3	0.06	0.02	0.01	-	-	98	90	82	75	67				
			50		0.07	0.02	0.01	-	-	2.9	4.9	7.0	9.2	11				
			70	1.3	0.07	0.03	0.01	-	-	100	93	85	78	71				
			100		0.08	0.03	0.01	-	-	3.0	4.9	7.0	9.3	12				
			150	1.3	0.09	0.03	0.01	-	-	106	99	92	86	80	74			
			200		0.10	0.04	0.01	-	-	3.0	5.0	7.0	9.3	12	15			
			300	1.3	0.12	0.04	0.01	-	-	120	116	112	108	104	100			
			500		0.10	0.04	0.01	0.01	-	3.1	5.1	7.0	9.4	12	15			
		750	1.3	0.15	0.06	0.02	0.01	-	127	123	120	117	117	114				
		1,000		0.21	0.09	0.03	0.01	0.01	3.1	5.1	7.0	9.5	12	15				
		2,000	1.8	0.41	0.17	0.06	0.02	0.01	131	130	129	128	123	118				
		3,500		0.72	0.30	0.10	0.04	0.02	4.2	6.1	7.8	9.7	14	17				
		5,000	2.2	1.03	0.43	0.15	0.06	0.03	133	132	131	131	129	126				
		7,500		1.54	0.65	0.22	0.09	0.04	5.3	7.2	9.1	11	15	18				
		10,000	2.7	2.06	0.86	0.29	0.12	0.06	133	132	132	132	132	132				
		15,000		3.09	1.29	0.44	0.18	0.08	6.7	9.5	11	12	16	21				
		20,000	3.5	4.12	1.73	0.58	0.24	0.11	133	133	132	132	131	130				
		25,000		5.15	2.16	0.73	0.30	0.14	9.0	11	13	15	19	22				
50,000	4.3	10.29	4.32	1.46	0.59	0.28	132	132	132	132	132	132						
75,000		15.44	6.47	2.18	0.89	0.42	12	14	15	17	21	25						
100,000	5.2	20.58	8.63	2.91	1.18	0.57	132	132	132	131	132	132						
150,000		30.87	12.95	4.37	1.77	0.85	14	17	18	19	24	28						
200,000	6.8	41.17	17.27	5.82	2.37	1.13	132	132	132	132	132	132						
250,000		51.46	21.58	7.28	2.96	1.41	18	20	21	23	28	33						

(NOTE) For speeds not shown on the pump hydraulic charts, consult factory.



# SR

## PUMP HYDRAULIC SIZE CHART

SEC. 500

Page 131.6

February 2025

**60 GPM**  
**100 RPM**

NOMINAL		VISCOSITY		N.I.P.R.	FRICTION PIPE LOSS (PSI/FT) <small>(Schedule 40 Steel Pipe)</small>					CAPACITY (GPM)				H.P. REQUIRED					
GPM	RPM	ROTOR TRIM	(SSU)	(PSIa)	PIPE DIAMETER					MEDIUM-DUTY & HEAVY-DUTY				HEAVY-DUTY ONLY					
					2½"	3"	4"	5"	6"	DIFFERENTIAL PRESSURE (PSI)									
										25	50	75	100	150	200	300	400		
60	100	STD	28	0.8	0.01	-	-	-	-	38	29	20							
			32		0.01	-	-	-	-	1.4	2.2	3.2							
			38	0.8	0.01	0.01	-	-	-	39	29	21	14	8.0					
			50		0.02	0.01	-	-	-	1.4	2.2	3.2	4.1	5.3					
			70	0.8	0.02	0.01	-	-	-	41	32	24	17	11					
			100		0.02	0.01	-	-	-	1.4	2.2	3.2	4.1	5.4					
			150	0.8	0.03	0.01	-	-	-	45	38	32	26	20	13				
			200		0.02	0.01	-	-	-	1.4	2.3	3.3	4.2	5.4	8.0				
			300	0.8	0.03	0.01	-	-	-	57	53	51	48	41	32				
			500		0.05	0.02	0.01	-	-	1.4	2.3	3.3	4.3	5.5	8.1				
		750	0.8	0.07	0.03	0.01	-	-	62	59	57	57	56	55					
		1,000		0.09	0.04	0.01	0.01	-	1.4	2.4	3.3	4.3	5.5	8.1					
		2,000	1.1	0.19	0.08	0.03	0.01	0.01	65	63	61	60	57	54					
		3,500		0.33	0.14	0.05	0.02	0.01	1.6	2.6	3.5	4.5	6.3	8.2					
		5,000	1.4	0.47	0.20	0.07	0.03	0.01	66	66	65	65	63	60					
		7,500		0.71	0.30	0.10	0.04	0.02	2.1	3.1	4.1	4.9	6.8	8.7					
		10,000	1.7	0.95	0.40	0.13	0.05	0.03	65	65	65	63	63	60					
		15,000		1.42	0.60	0.20	0.08	0.04	2.9	3.6	4.5	5.5	7.3	9.0					
		20,000	2.2	1.90	0.80	0.27	0.11	0.05	65	65	64	64	63	61					
		25,000		2.37	1.00	0.34	0.14	0.07	3.3	4.3	5.2	6.2	8.0	10					
50,000	2.6	4.75	1.99	0.67	0.27	0.13	65	65	64	64	63	62							
75,000		7.12	2.99	1.01	0.41	0.20	5.7	6.5	9.0	9.0	11	13							
100,000	3.2	9.50	3.98	1.34	0.55	0.26	65	64	64	64	63	62							
150,000		14.25	5.98	2.02	0.82	0.39	5.8	7.0	9.0	10	12	13							
200,000	4.2	19.00	7.97	2.69	1.09	0.52	65	65	64	64	63	63							
250,000		23.75	9.96	3.36	1.36	0.65	8.2	9.0	11	12	14	15							

(NOTE) For speeds not shown on the pump hydraulic charts, consult factory.



# SR

## PUMP HYDRAULIC SIZE CHART

SEC. 500

PAGE 131.7

February 2025

**53 GPM**

**80 RPM**

NOMINAL		VISCOSITY		N.I.P.R.	FRICTION PIPE LOSS (PSI/FT) <small>(Schedule 40 Steel Pipe)</small>					CAPACITY (GPM)				H.P. REQUIRED							
GPM	RPM	ROTOR TRIM	(SSU)	(PSIa)	PIPE DIAMETER					MEDIUM-DUTY & HEAVY-DUTY				HEAVY-DUTY ONLY							
					3"	4"	5"	6"	8"	DIFFERENTIAL PRESSURE (PSI)				150	200	300	400				
										25	50	75	100								
53	80	STD																			
				"D"	200,000	4.3	7	2.4	1	0.5	0.15	53	53	52	52	52	52	51	51		
			399,999		14.1		4.8	1.9	0.9	0.3	6.5	7.5	8.5	9.5	11	12	14	15			
			400,000		4.8	53	53	52	52	52	52	52	52	52	51	51					
			599,999			21	7.1	2.9	1.4	0.5	7.3	8.0	8.9	9.6	11	13	14	16			
			600,000		6	53	53	52	52	52	52	52	52	52	51	51					
			799,999			NR	9.5	3.9	1.8	0.6	7.6	8.4	9.2	9.9	12	13	15	16			
			800,000		6.5	53	53	52	52	52	52	52	52	52	51	51					
			1M			NR	11.9	4.8	2.3	0.8	8.1	8.9	9.6	10	12	13	15	17			

(NOTE) For speeds not shown on the pump hydraulic charts, consult factory.