

Electric Motor Driven



Internal Gear Type Positive Displacement Pumps



1.5 Horsepower

DESCRIPTION

Internal gear pumps are high quality units capable of 15 ft. (5 m.) of lift and smooth, consistent flow. Models feature a type 21 seal for pressures up to 200 psi (13,8 Bar). With flow up to 12 gpm (0.8 lps) and a maximum viscosity of 1500 SSU, these units are available with either a 1–1/2 H.P. totally enclosed fan cooled (TEFC) or explosion-proof motor.

These cast iron gear pumps are reliable, cost-effective and low maintenance.



GMC1DE3–E1.5 1P SHOWN

PUMP SPECIFICATIONS

Basic Construction: Gray Iron.

Rotor and Idler: High Strength Iron.

Bushings: Carbon Graphite.

Idler Pin: Hardened Steel.

Seal: Type 21, Mechanical Self Lubricated. Carbon Rotating Face. Ceramic Stationary Face. Fluorocarbon Elastomers (DuPont Viton or Equivalent).

Maximum Temperature of Liquid Pumped 300°F (149°C).

Gaskets: Synthetic Fiber w/Nitrile Binder.

O-Rings: Fluorocarbon (DuPont Viton or Equivalent).

Pressure Relief Valve: Ductile Iron.

Pressure Setting: 75 PSI (5 BAR).

Motor Speed: 1750 RPM.

Rotation: Clockwise.

SPECIFICATIONS

Model	Ship Wt. (Approx.)	SuctxDisch. (NPT)	Motor Type	VAC 60 Hz	H.P.	Amps
GMC1DE3–E1.5 1P	59 lbs. 26,8 kg.	1" x 1"	TEFC, Single Phase, Continuous Duty.	115/230	1.5	12.4/6.2
GMC1DE3–E1.5 3P	59 lbs. 26,8 kg.	1" x 1"	TEFC, Three Phase, Continuous Duty.	230/460	1.5	4.6/2.3
GMC1DE3–X1.5 1P	59 lbs. 26,8 kg.	1" x 1"	X-Proof, Single Phase, Continuous Duty.	115/230	1.5	19.0/9.5
GMC1DE3–X1.5 3P	59 lbs. 26,8 kg.	1" x 1"	X-Proof, Three Phase, Continuous Duty.	230/460	1.5	4.6/2.3



GORMAN-RUPP PUMPS

www.grpumps.com

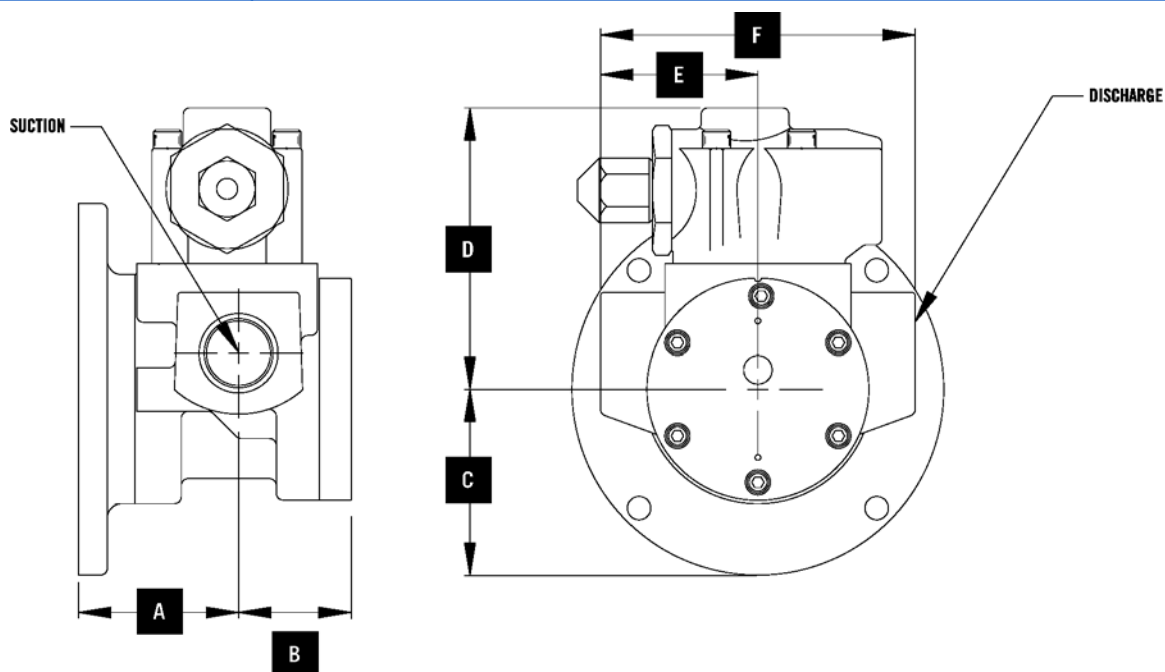
Specifications Subject to Change Without Notice

Printed in U.S.A.

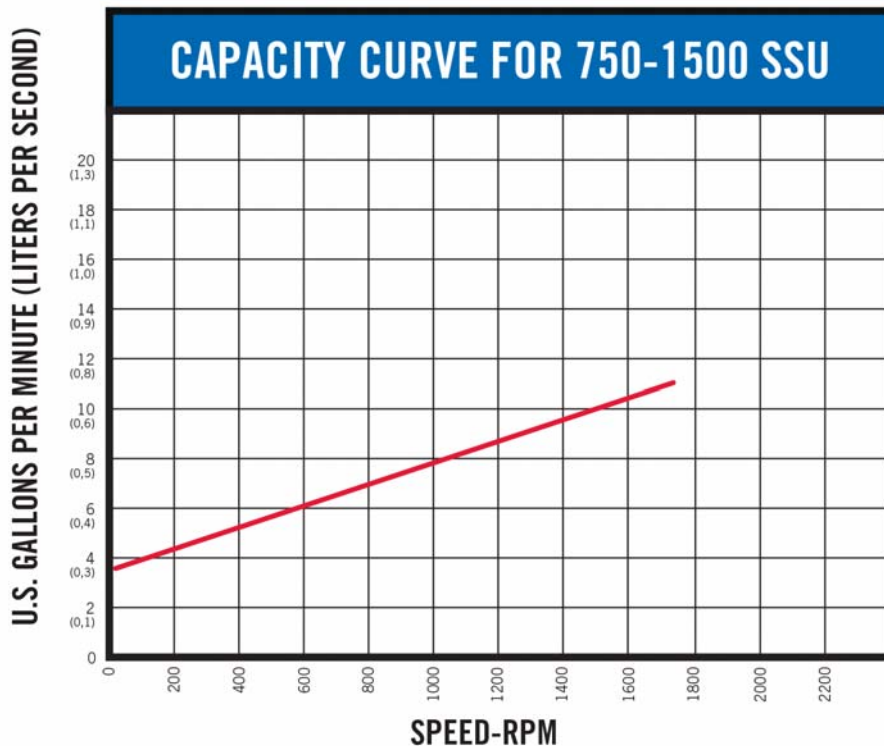
Specification Data

SECTION 520, PAGE 25

APPROXIMATE DIMENSIONS



DIMENSIONS							
A	B	C	D	E	F	Suct.	Disch.
2.8 (71,1)	2.7 (68,6)	3.3 (83,8)	5.2 (132,1)	2.5 (63,5)	5.0 (127,0)	1" NPT	1" NPT



GORMAN-RUPP PUMPS

www.grpumps.com

Specifications Subject to Change Without Notice

Printed in U.S.A.