

AC DEU



# PORTABLE HYDRAULIC POWER UNIT

## w/Autostart

## Model HSP-4045T



Shown with  
Optional Wheel Kit

### HYDRAULIC SPECIFICATIONS

**Hose Ports:** 1" N.P.T.

**Hydraulic Pump:** Pressure Compensated Piston Type.

**Hydraulic Output:** Variable, Max 28 GPM (121 LPM).

**Maximum Operating Pressure:**

2900 PSI (200 Bar);

3000 PSI (206 Bar) Bypass.

**Hydraulic Oil:** Biodegradable Hydraulic Oil.

**Hydraulic Oil Reservoir Capacity:** 45 U.S. Gallons (189 Liters).

**Standard Equipment:** Lifting Bail, Combination Skid Base w/Fuel Tank, Pressure Control Valve, System Relief Valve, Spin-on Return Filter w/Indicator, Fluid Level/Temperature Gauge, Tank Top Filler/ Strainer, Variable Speed Control, Liquid Filled Pressure Gauge and Single Ball Type Float Switch\*\*.

**Optional Equipment:** Battery. Wheel Kit w/Semi-Pneumatic Tires. Tandem Axle Over-the-Road Trailer (Meets DOT Requirements) Available w/ Either Electric or Hydraulic Surge Brakes, Running Lights, Jack Stands and Safety Cables/Chains. EPS w/Submersible Transducer Liquid Level Sensor (50 Ft. [15 M] Cable Standard, Alternate Lengths Available). 1.00" (25,4 mm) Hydraulic Hoses with Quick Disconnect Fittings Available in 50 Foot (15,2 Meter) Increments; Maximum Recommended Length 150 Feet (45,7 Meters) Specify Length at Time of Order. Two-Float Switch Kit.

**\*\*50 Ft. (15 m) Standard Length; Dual Switches and Alternate Cable Lengths Available From the Factory.**

### ENGINE SPECIFICATIONS

**Model:** John Deere 4045T.

**Type:** Four Cylinder, Four Cycle, Turbocharged, Liquid Cooled Diesel Engine.

**Displacement:** 275 Cu. In. (4,5 Liters).

**Governor:** Mechanical.

**Lubrication:** Forced Circulation.

**Air Cleaner:** Dry Type.

**Oil Reservoir:** 17.5 U.S. Qts. (16,6 Liters) Dry; 15.5 U.S. Qts. (14,7 Liters) Refill.

**Fuel Tank:** 88 U.S. Gallons (333 Liters).

**Full Load Operating Time:** 35 Hrs.

**Starter:** 12V Electric.

**Standard Features:** High Oil Temperature, Low Oil Pressure, V-belt, Alternator And Start Failure Safety Shut Down Switches/Indicators. Fuel Level Gauge. Throttle Control. Autostart Instrument Panel with: Temperature Gauge, Oil Pressure Gauge, Ammeter, Hourmeter, Tachometer, Manual/Start/Stop Key Switch, 15 Amp Fuse. Audible Startup Warning Delay. Muffler w/Guard and Weather Cap.

### JOHN DEERE PUBLISHED PERFORMANCE:

Maximum Gross Intermittent Industrial B.H.P.

74 (55 kW) @ 2400 RPM



THE GORMAN-RUPP COMPANY • MANSFIELD, OHIO

GORMAN-RUPP OF CANADA LIMITED • ST. THOMAS, ONTARIO, CANADA

www.grpumps.com

Specifications Subject to Change Without Notice

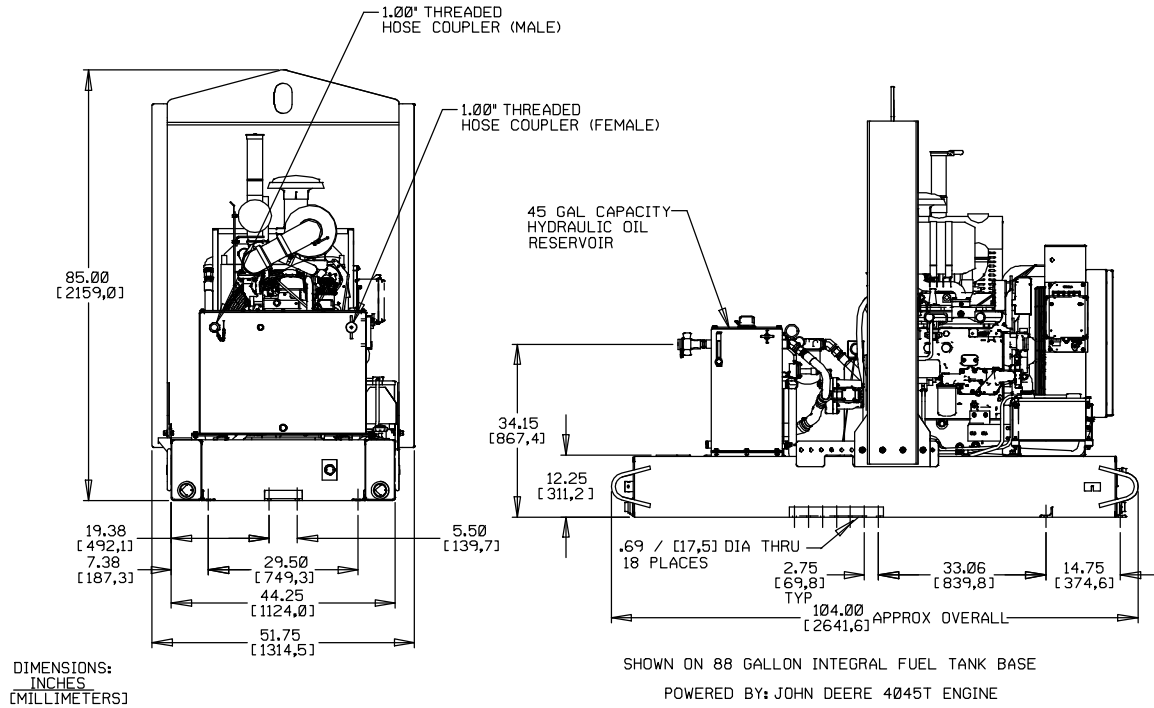
Printed in U.S.A.

**Specification Data**

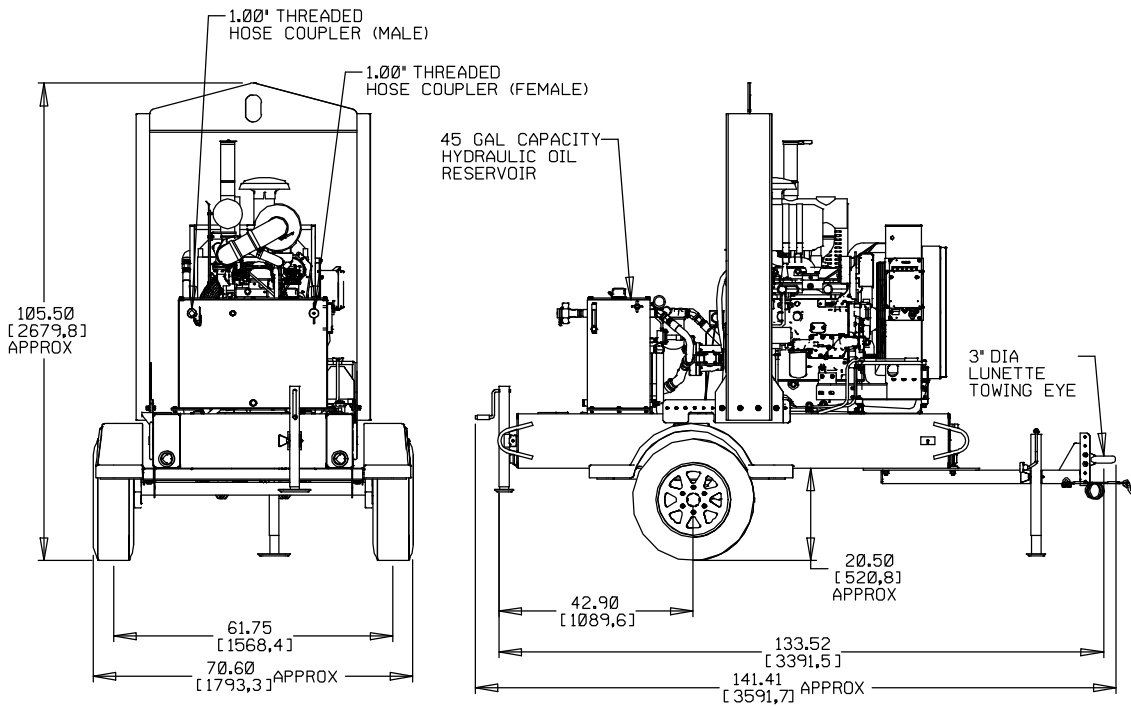
SECTION 140, PAGE 1700

APPROXIMATE DIMENSIONS and WEIGHTS

	SKID BASE	WHEEL KIT
NET WEIGHT (Dry):	3040 LBS. (1379 KG)	3490 LBS. (1583 KG)
SHIPPING WEIGHT:	3440 LBS. (1560 KG)	3490 LBS. (1583 KG)
EXPORT CRATE SIZE:	335 CU. FT. [9,5 CU. M.]	729 CU. FT. [20,6 CU. M.]



**Standard – Skid Base**



**Optional – Wheel Kit**



THE GORMAN-RUPP COMPANY • MANSFIELD, OHIO

GORMAN-RUPP OF CANADA LIMITED • ST. THOMAS, ONTARIO, CANADA

Specifications Subject to Change Without Notice

Printed in U.S.A.