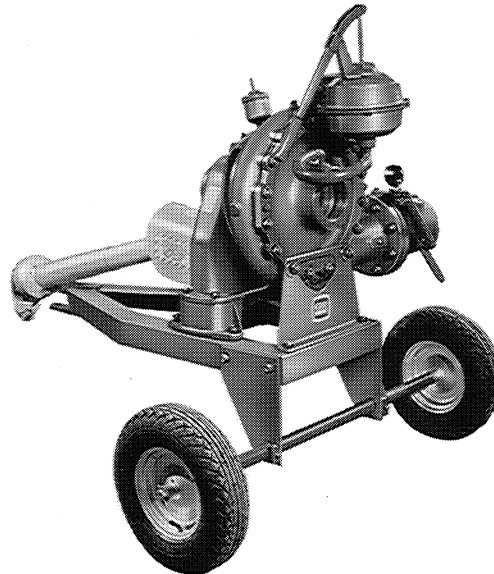


A E

Single Stage Centrifugal Pump For Farm Tractor P.T.O. Drive Model 64B2-G & 64B2-GA Size 4" x 4"

**PUMP SPECIFICATIONS**

Size: 4" x 4" NPT

Casing: Gray Iron No. 30

(Max. Operating Pressure 255 lbs. per sq. in.)

Impeller: Enclosed Type, 6 Vanes, Gray Iron No. 30

(Handles 3/8" Dia. Spherical Solids)

Impeller Shaft: Model 64B2-G - Alloy Steel 4320

Model 64B2-GA - Alloy Steel 4140

Wear Ring; Replaceable: Brass 85-5-5-5

Suction Head; Removable: Gray Iron No. 30

Seal: Double Grease-Lubricated with Spring Loaded Grease Cup. Sintered Bronze Stationary Seal Seats. Rotating Faces are Steel. Maximum Temperature of Liquid Pumped, 110°F. Maximum Suction Pressure 10 Lbs. per square inch.

Seal Liner: Brass 70-30

Bearings: Ball Type

Bearings & Gear Lubrication: Oil Lubricated

Gaskets: Vegetable Fiber

Standard Equipment:

Base

Strainer

Hand Primer

2 Wheel Truck Assy

Check Valve

MODEL: 64B2-G

Max. R.P.M. Input: 550

Rotation: CCW when viewed from drive end

Adjustable Drive Shaft w/Universal Joints to Fit
Standard 1-3/8" 6 Tooth P.T.O. Spline Shaft**MODEL: 64B2-GA**

Max. R.P.M. Input: 1000

Rotation: CCW when viewed from drive end

Adjustable Drive Shaft w/Universal Joints to Fit
Standard 1-3/8" 21 Tooth P.T.O. Spline Shaft**THE GORMAN-RUPP COMPANY • MANSFIELD, OHIO****GORMAN-RUPP**

GORMAN-RUPP OF CANADA LIMITED • ST. THOMAS, ONTARIO, CANADA

Printed in U.S.A.

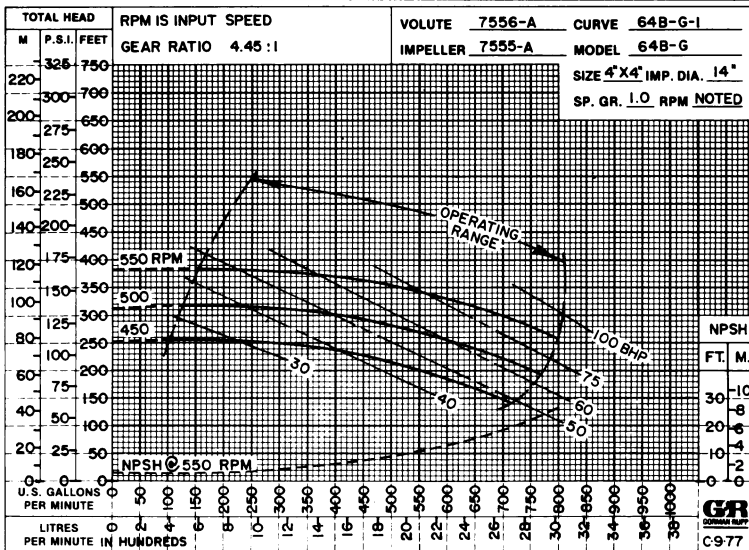
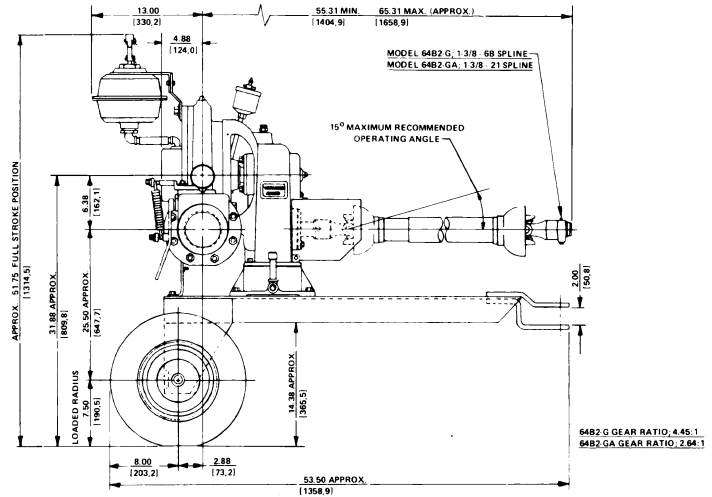
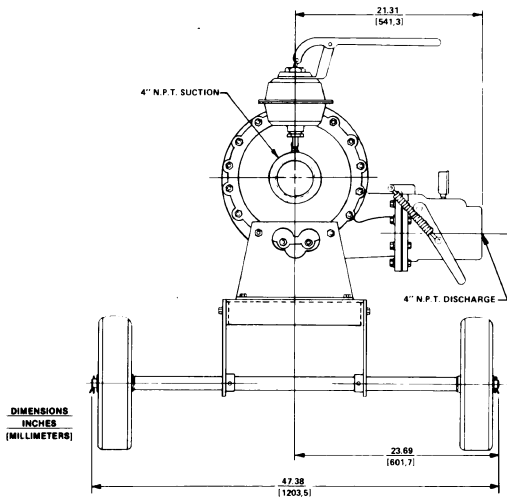
Copyright by the Gorman-Rupp Company

Specification Data

SECTION 110, PAGE 1170

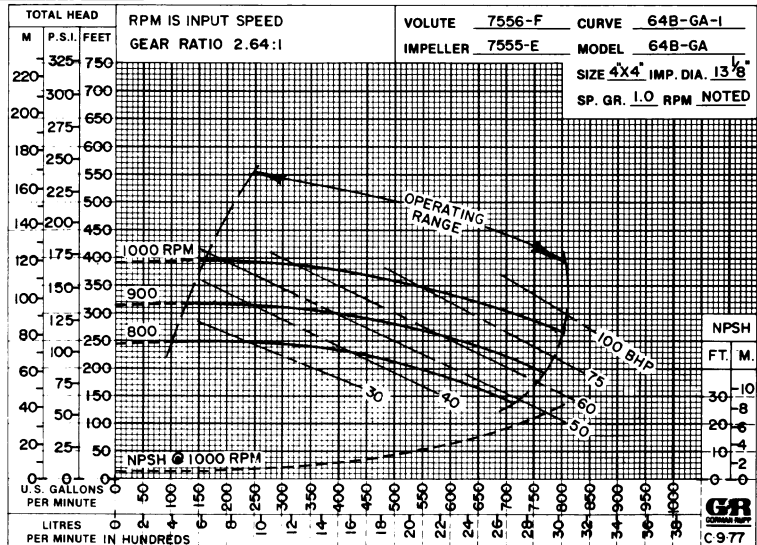
OVERALL DIMENSIONS
and
WEIGHTS APPROXIMATE

MODEL	NET WT.	SHIPPING WT.	EXPORT CRATE SIZE
64B2-G	382 LBS.	478 LBS.	39 CU. FT.
64B2-GA	540 LBS.	646 LBS.	39 CU. FT.



Model: 64B2-G

Model: 64B2-GA



THE GORMAN-RUPP COMPANY • MANSFIELD, OHIO

GORMAN-RUPP OF CANADA LIMITED • ST. THOMAS, ONTARIO, CANADA

Printed in U.S.A.