



Power-Take-Off Drive

Self Priming Centrifugal Pump

Model 08D1-GHH

Size 8" x 6"

PUMP SPECIFICATIONS

Size: 8" (203 mm) Victaulic™ Suction x 6" (152 mm) Petroleum Discharge Flange.

Casing: Aluminum 356-T6;
Maximum Operating Pressure 247 psi (1703 kPa).*

Enclosed Type, Five Vane Impeller: Aluminum 356-T6.
Handles 3/4" (19 mm) Diameter Spherical Solids.

Impeller Shaft: Alloy Steel 8620.

Replaceable Wear Ring: Gray Iron 30.

Suction Head: Aluminum 356-T6.

Gearbox Housing: Gray Iron 30.

Gearbox Lubrication: SAE 90 Gear Oil.

Gears: Alloy Steel 8620.

Gear Ratio: 2.56:1 Increase.

Bearings: Open Single Row Ball in Gear Housing; Tapered Roller in Tail Shaft Assembly.

Gaskets: Buna-N, Resistant Synthetic Rubber and Cork.

Hardware: Standard Plated Steel.

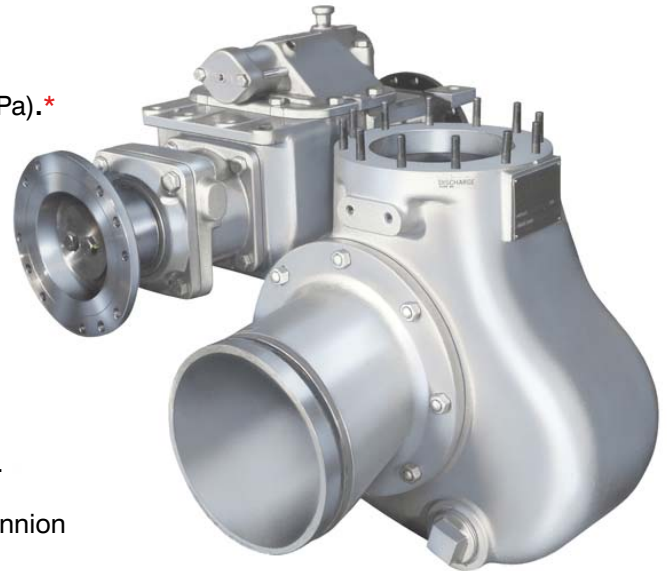
Standard Equipment: Mounting Cross Member and Trunnion Assembly. Air Shift. 1800 Series Dana™ Flanges.

Optional Equipment: Auxiliary P.T.O. Stub Shaft. Speedometer Adaptor.

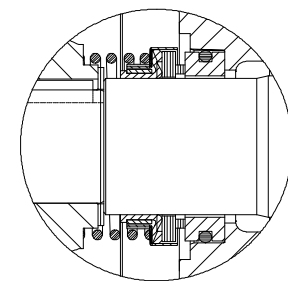
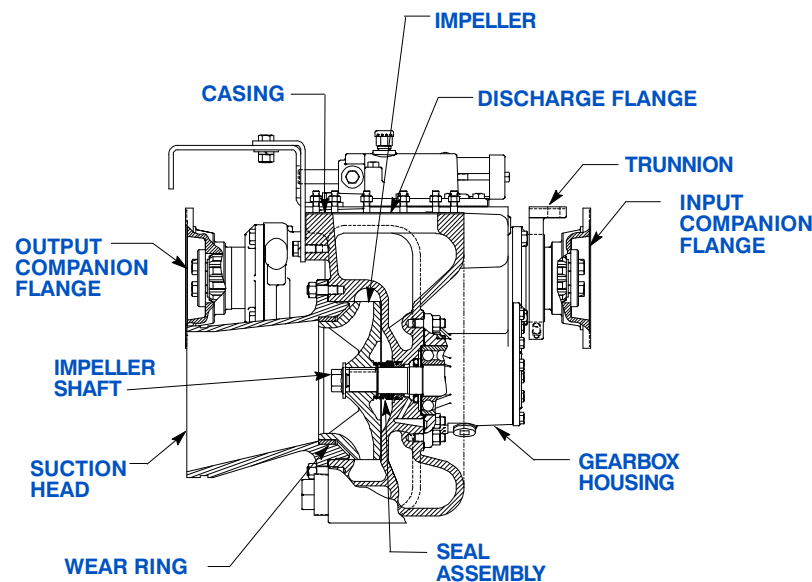
Victaulic is a Registered Trademark of Victaulic Company of America.

Dana is a Registered Trademark of Dana Corporation.

**Consult Factory for Applications Exceeding Maximum Pressure and/or Temperature Indicated.*



Rotation:
Clockwise Facing Gearbox Input Shaft.

**SEAL DETAIL**

Type 21, Mechanical, Self-Lubricated. Carbon Rotating Face. Ni-Resist Stationary Face. Fluorocarbon Elastomers (DuPont Viton® or Equivalent). Stainless Steel 18-8 Cage and Spring. Maximum Temperature of Liquid Pumped, 160°F (71°C).*



THE GORMAN-RUPP COMPANY • MANSFIELD, OHIO

GORMAN-RUPP OF CANADA LIMITED • ST. THOMAS, ONTARIO, CANADA

www.grpumps.com

Specifications Subject to Change Without Notice

Printed in U.S.A.

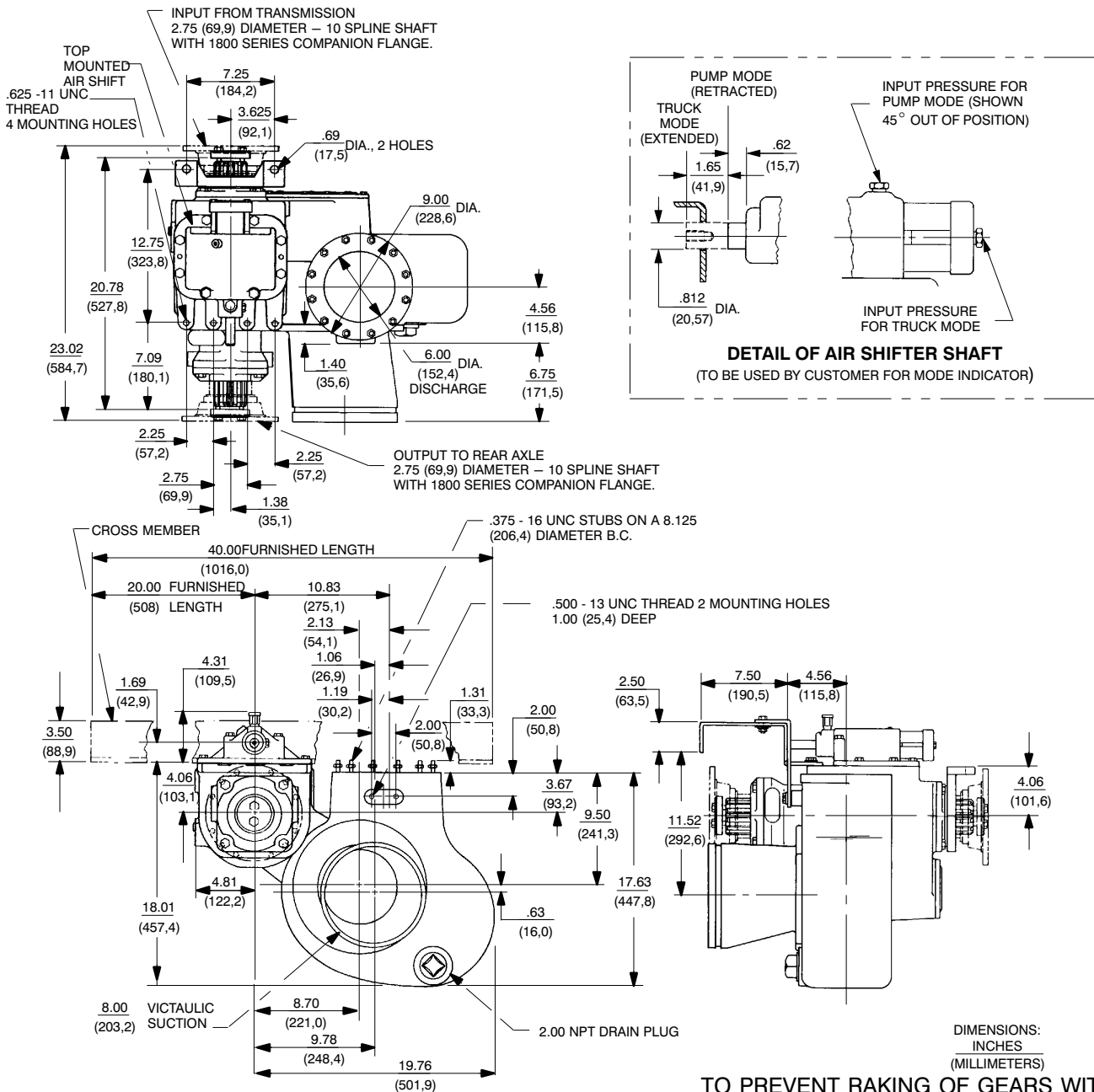
Specification Data

APPROXIMATE
DIMENSIONS and
WEIGHTS

NET WEIGHT:
SHIPPING WEIGHT:
EXPORT CRATE:

356 LBS. (161 KG.)
406 LBS. (184 KG.)
15.3 CU. FT. (0,43 CU. M.)

SECTION 110, PAGE 790



**GEARBOX THROUGH TORQUE CAPACITY
BASED ON SHAFT & SPLINE SIZE**

DIESEL		TRANSMISSION	GASOLINE	
AUTO	MANUAL		AUTO	MANUAL
11,000	10,000	FT. - LBS. MAXIMUM	13,300	12,300
1,521	1,383	KGM MAXIMUM	1,839	1,701

Victaulic is a Registered Trademark of Victaulic Company of America.

TO PREVENT RAKING OF GEARS WITH AUTOMATIC TRANSMISSIONS, INSTALL BRAKE TO LIMIT INPUT SHAFT ROTATION TO NO MORE THAN 15 RPM MAXIMUM DURING SHIFTING.

FOR AIR SHIFT, 70 - 140 PSI (482 - 965 kPa) AIR PRESSURE REQUIRED AT GEARBOX AIR CYLINDER, 1/4" (6,4 mm) LINES RECOMMENDED.



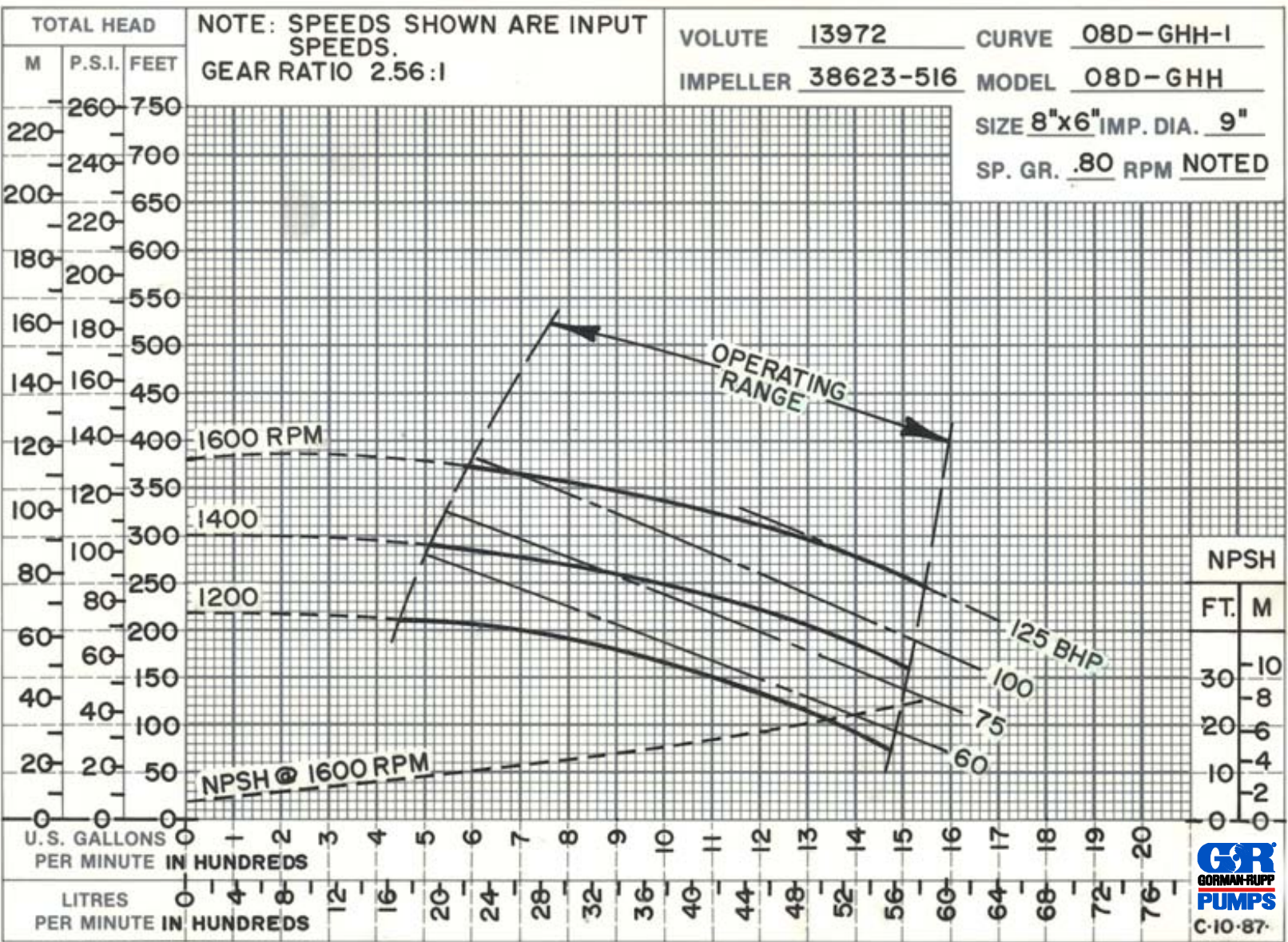
THE GORMAN-RUPP COMPANY • MANSFIELD, OHIO

GORMAN-RUPP OF CANADA LIMITED • ST. THOMAS, ONTARIO, CANADA

Specifications Subject to Change Without Notice

Printed in U.S.A.

PERFORMANCE BASED ON PETROLEUM



THE GORMAN-RUPP COMPANY • MANSFIELD, OHIO
GORMAN-RUPP OF CANADA LIMITED • ST. THOMAS, ONTARIO, CANADA
www.grpumps.com

Specifications Subject to Change Without Notice

Printed in U.S.A.

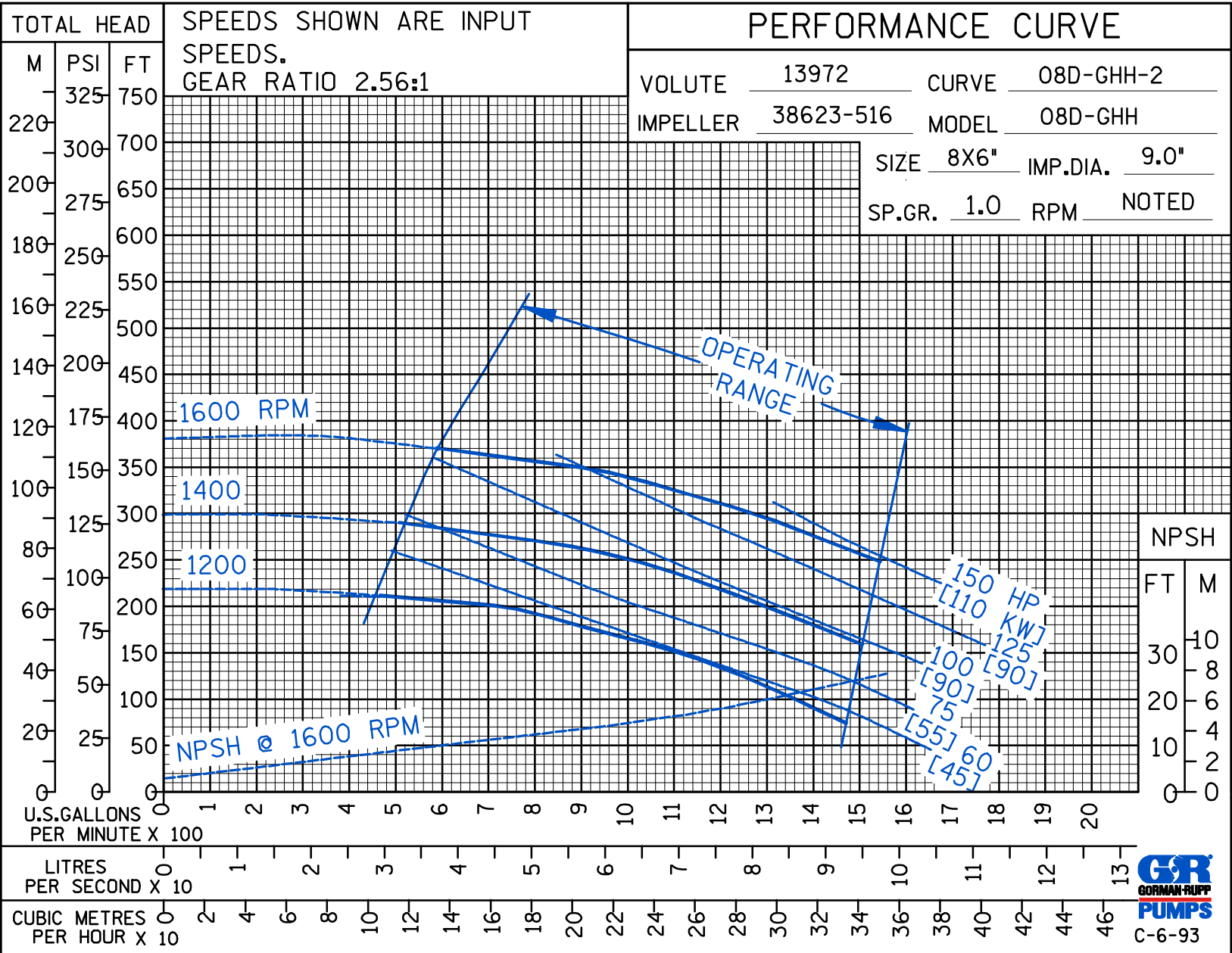
PERFORMANCE BASED ON WATER



THE GORMAN-RUPP COMPANY • MANSFIELD, OHIO
 GORMAN-RUPP OF CANADA LIMITED • ST. THOMAS, ONTARIO, CANADA
 www.grpumps.com

Specifications Subject to Change Without Notice

Printed in U.S.A.



Curve Data

Sec. 110

PAGE 790.2
JULY 2007