

Q



For Power-Take-Off Drive  
**Self Priming Centrifugal Pump**  
**Model 08D1-GA**  
**Size 8" x 6"**

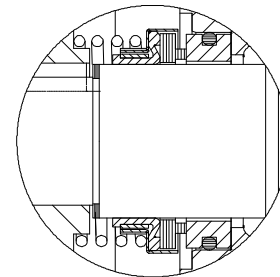
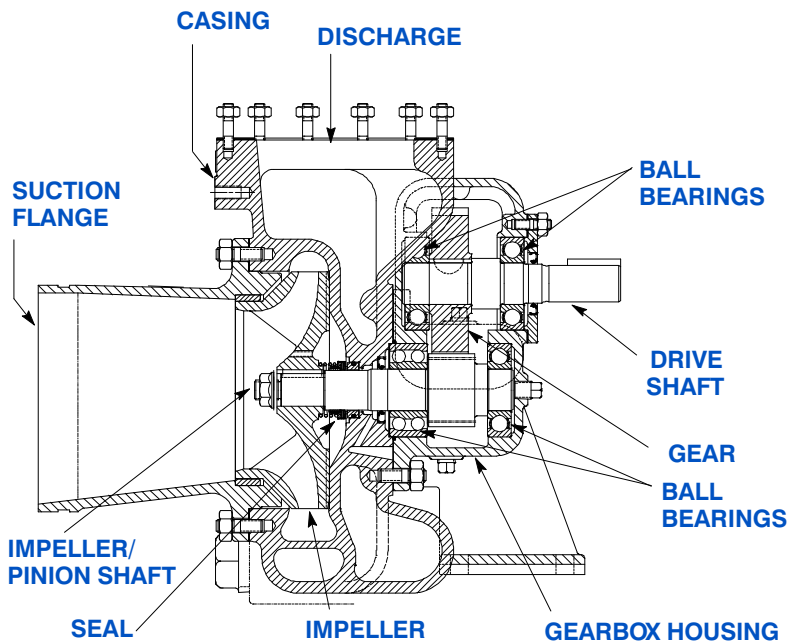
**PUMP SPECIFICATIONS**

- Size:** 8" (203 mm) Victaulic® Suction;  
6" (152 mm) Petroleum Flange Discharge.
- Casing:** Aluminum 356-T6.  
Maximum Operating Pressure 185 psi (1276 kPa).\*
- Enclosed Type, Five Vane Impeller:**  
Aluminum Alloy 356-T6.  
Handles 3/4" (19 mm) Diameter Spherical Solids.
- Impeller/Pinion Shaft:** Alloy Steel 8620.
- Replaceable Wear Ring:** Gray Iron 30.
- Suction Head:** Aluminum 356-T6.
- Gearbox Housing:** Gray Iron 30.  
**Gearbox Lubrication:** SAE 90 Gear Oil.
- Gears:** Alloy Steel 8620.
- Gear Ratio:** 2.18:1 Increaser.
- Bearings:** Open Ball Type.
- Gaskets:** Vegetable Fiber and Cork.
- Hardware:** Standard Plated Steel.



*\*Consult Factory for Applications Exceeding  
Maximum Pressure and/or Temperature Indicated.*

Victaulic is a Registered Trademark of Victaulic Company of America.



**SEAL DETAIL**

Type 21, Mechanical, Self-Lubricated. Carbon Rotating Face. Ni-Resist Stationary Face. Fluorocarbon Elastomers (DuPont Viton® or Equivalent). Stainless Steel 18-8 Cage and Spring. Maximum Temperature of Liquid Pumped, 160°F (71°C).\*



**THE GORMAN-RUPP COMPANY • MANSFIELD, OHIO**

GORMAN-RUPP OF CANADA LIMITED • ST. THOMAS, ONTARIO, CANADA

www.grpumps.com

Specifications Subject to Change Without Notice

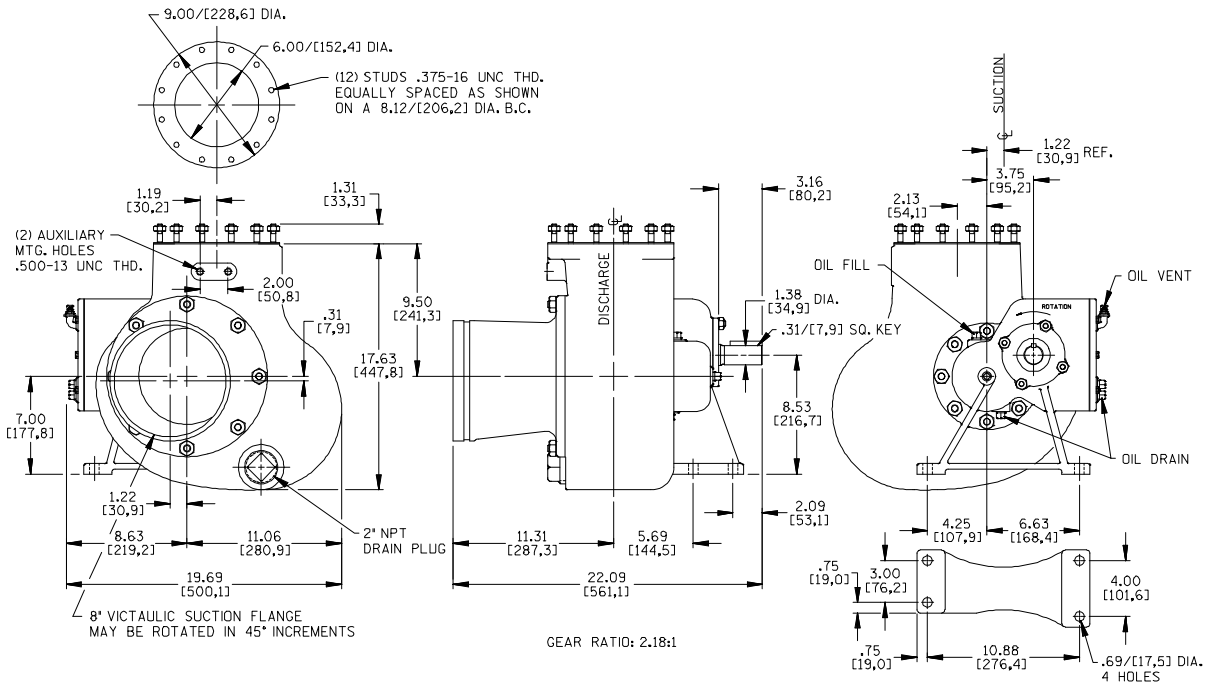
Printed in U.S.A.

**Specification Data**

SECTION 110, PAGE 786

OVERALL DIMENSIONS  
and  
APPROXIMATE WEIGHTS

NET WEIGHT: 164 LBS. (74 KGS.)  
SHIPPING WEIGHT: 174 LBS. (79 KGS.)  
EXPORT CRATE: 6.8 CU. FT. (0,19 CU. M.)

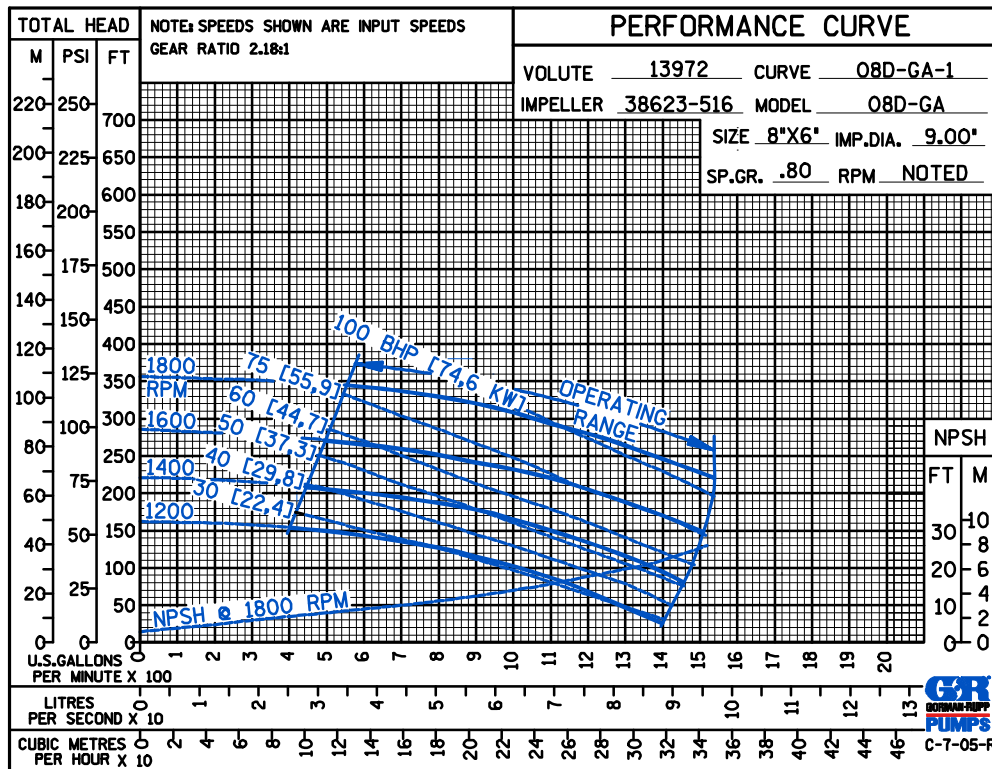


DIMENSIONS:  
INCHES  
[MILLIMETERS]

**Rotation: Counterclockwise Facing Gearbox Input Shaft.**

Victaulic is a Registered Trademark of Victaulic Company of America.

PERFORMANCE  
BASED ON  
PETROLEUM



THE GORMAN-RUPP COMPANY • MANSFIELD, OHIO

GORMAN-RUPP OF CANADA LIMITED • ST. THOMAS, ONTARIO, CANADA

Specifications Subject to Change Without Notice

Printed in U.S.A.