

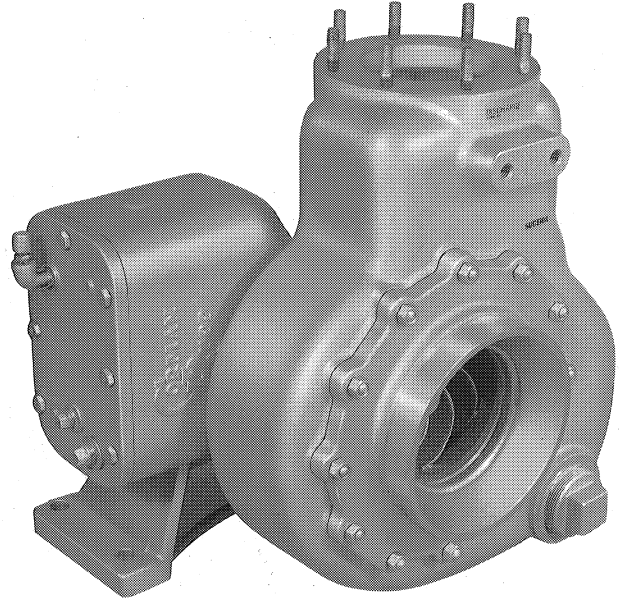
Q



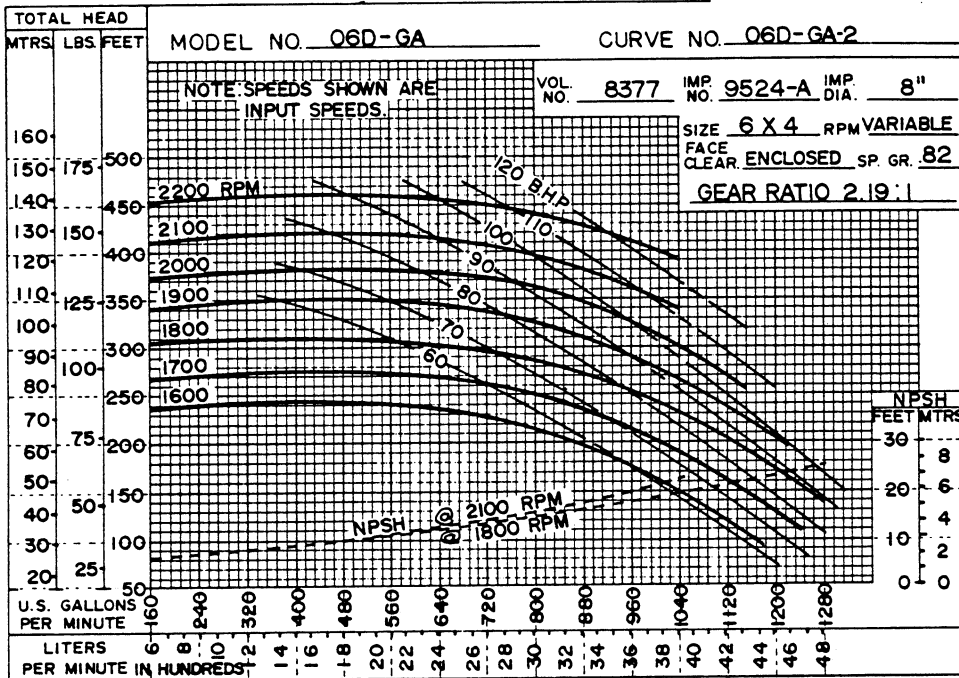
# Self Priming Centrifugal For Power-Take-Off Drive Model 06D15-GA & 06D15-GAR Size 6" x 4"

**PUMP SPECIFICATIONS**

Suction: 6" Victaulic; Discharge: 4" Petroleum Flange  
 Casing: Aluminum No. 356-T6  
 (Maximum Operating Pressure 240 lbs.)  
 Impeller: Enclosed Type, Eight Vanes, Aluminum No. 356-T6  
 (Handles 7/8" Dia. Spherical Solids)  
 Wear Ring-Replaceable: Gray Iron No. 30  
 Suction Head: Aluminum No. 356-T6  
 Gear Box Hsg.: Gray Iron No. 30  
 Gears: Hardened Alloy Steel No. 8620  
 Gear Ratio: 2.19:1 Increase  
 Seal: Type 2. Mechanical Self-Lubricated.  
 Rotating Face is Carbon.  
 Stationary Face is Ni-Resist.  
 Elastomers are Viton.  
 Cage and Spring are Stainless Steel No. 18-8.  
 Maximum Temperature of Liquid Pumped, 160°F.  
 Bearings: Open Ball Type  
 Bearing Lubrication: Grease  
 Gaskets: Vegetable Fiber, Cork  
 Hardware-Internal Wetted: Standard Steel Plated  
 Hardware-External: Standard Steel Plated



Rotation: clockwise facing pump input shaft, specify model 06D-GAR; counterclockwise facing input shaft, specify 06D-GA.



THE GORMAN-RUPP COMPANY • MANSFIELD, OHIO  
 GORMAN-RUPP OF CANADA LIMITED • ST. THOMAS, ONTARIO, CANADA

Printed in U.S.A.

**Specification Data**

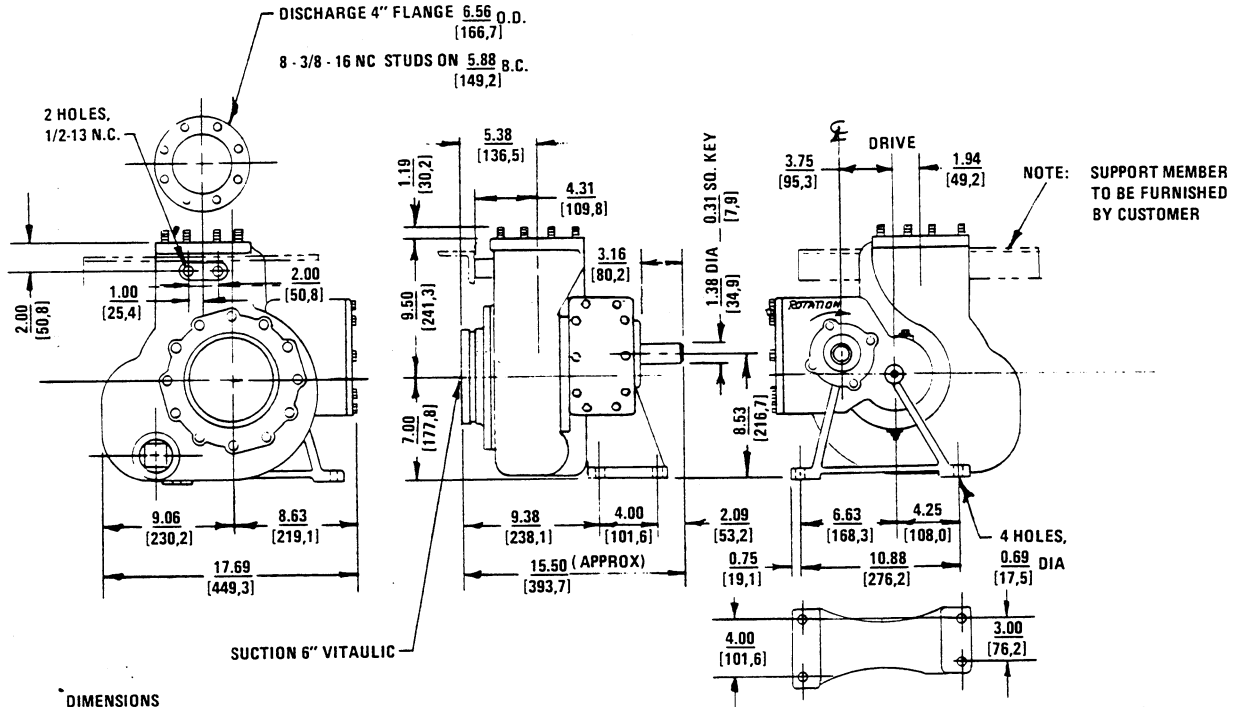
SECTION 110, PAGE 750

OVERALL DIMENSIONS  
and  
WEIGHTS APPROXIMATE

NET WEIGHT  
SHIPPING WEIGHT  
EXPORT CRATE SIZE

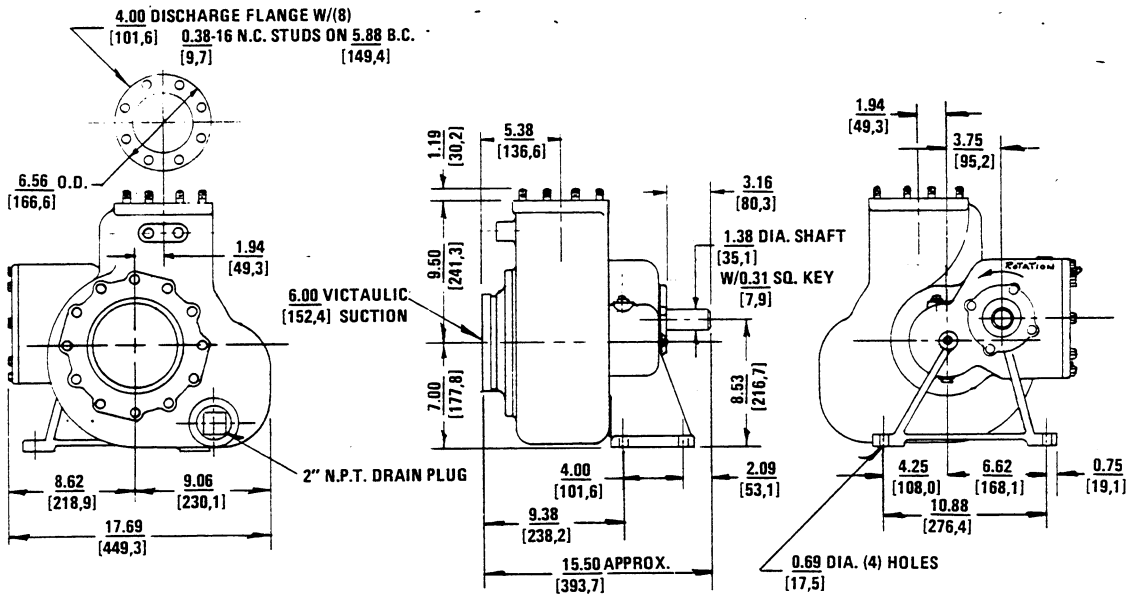
114 POUNDS  
125 POUNDS  
7 CUBIC FEET

**MODEL O6D-GAR**



GEAR BOX DRIVE 2.19 TO 1 RATIO INCREASER

**MODEL O6D-GA**



GEAR BOX DRIVE: 2.19:1 RATIO INCREASE



**THE GORMAN-RUPP COMPANY • MANSFIELD, OHIO**

GORMAN-RUPP OF CANADA LIMITED • ST. THOMAS, ONTARIO, CANADA

Printed in U.S.A.