

## Power-Take-Off Drive



# Self Priming Centrifugal Pump

## Models 06D1-GHH and 06D3-GHH

### Size 6" x 4"

**PUMP SPECIFICATIONS**

**Size:** 6" (152 mm) Victaulic® Suction x 4" (102 mm) Petroleum Discharge Flange.

**Casing:** (06D1) Aluminum 356-T6;  
(06D3) Ductile Iron 60-40-18.  
Maximum Operating Pressure 293 psi (2020 kPa).\*

**Enclosed Type, Eight Vane Impeller:** Aluminum 356-T6.  
Handles 7/8" (22,2 mm) Diameter Spherical Solids.

**Impeller Shaft:** Alloy Steel 8620.

**Replaceable Wear Rings:** (2) Gray Iron 30.

**Suction Head:** (06D1) Aluminum 356-T6;  
(06D3) Ductile Iron 80-55-06.

**Gearbox Housing:** Gray Iron 30.

**Gearbox Lubrication:** SAE 90 Gear Oil.

**Gears:** Alloy Steel 8620 and Carbon Steel 12L14.

**Gear Ratio:** 2.56:1 Increase.

**Bearings:** Open Single Row Ball, Roller and Tapered Roller.

**Gaskets:** Buna-N, Resistant Synthetic Rubber and Cork.

**Hardware:** Standard Plated Steel.

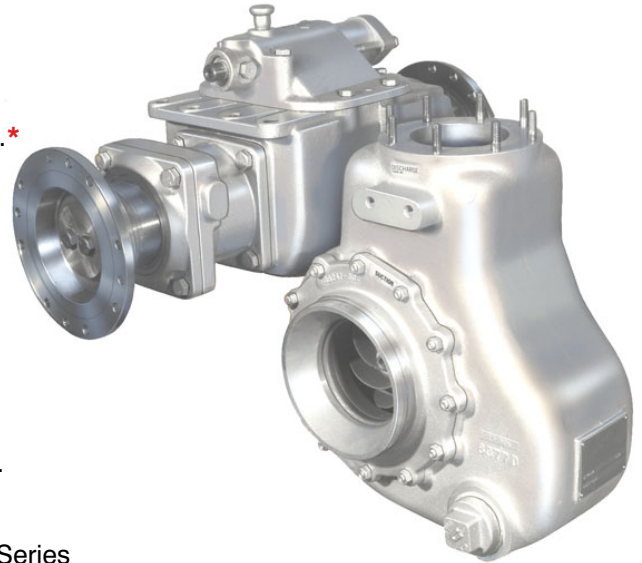
**Standard Equipment:** Trunnion, Assembly. Air Shift. 1800 Series Dana™ Flanges.

**Optional Equipment:** Mounting Cross Member, Bronze Impeller. Bronze Wear Rings. Auxiliary P.T.O. Stub Shaft. Speedometer Adaptor.

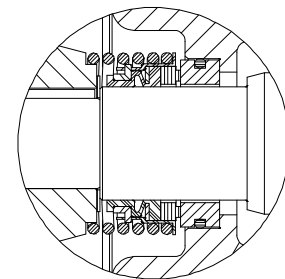
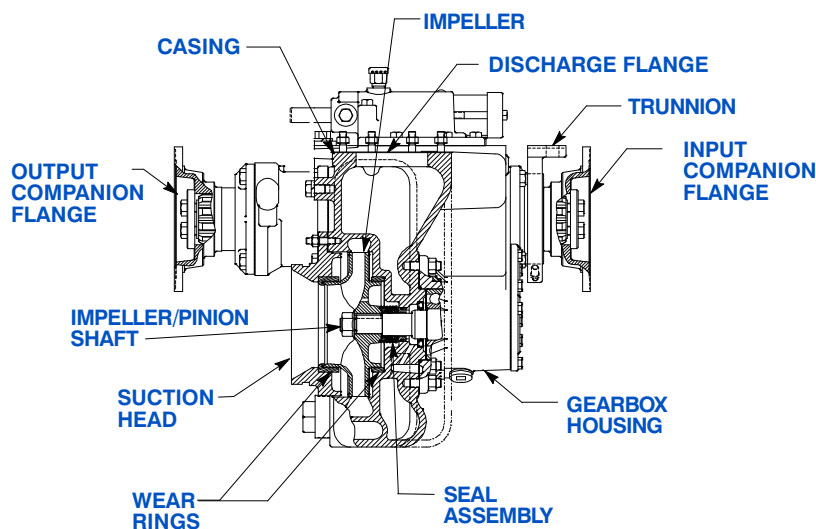
Victaulic is a Registered Trademark of Victaulic Company of America.

Dana is a Registered Trademark of Dana Corporation.

*\*Consult Factory for Applications Exceeding Maximum Pressure and/or Temperature Indicated.*



Rotation:  
Clockwise Facing Gearbox Input Shaft.

**SEAL DETAIL**

Type 2, Mechanical, Self-Lubricated. Carbon Rotating Face. Ni-Resist Stationary Face. Fluorocarbon Elastomers (DuPont Viton® or Equivalent). Stainless Steel 18-8 Cage and Spring. Maximum Temperature of Liquid Pumped, 160°F (71°C).\*



THE GORMAN-RUPP COMPANY • MANSFIELD, OHIO

GORMAN-RUPP OF CANADA LIMITED • ST. THOMAS, ONTARIO, CANADA

www.grpumps.com

Specifications Subject to Change Without Notice

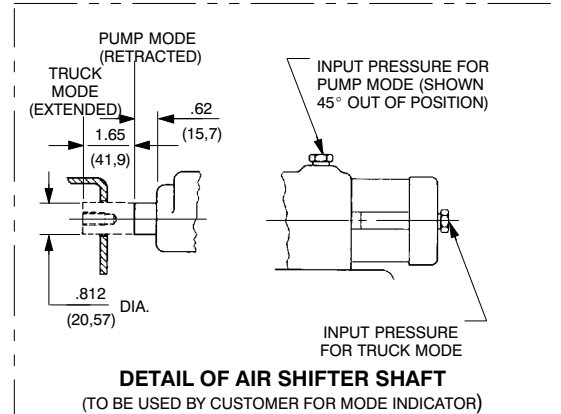
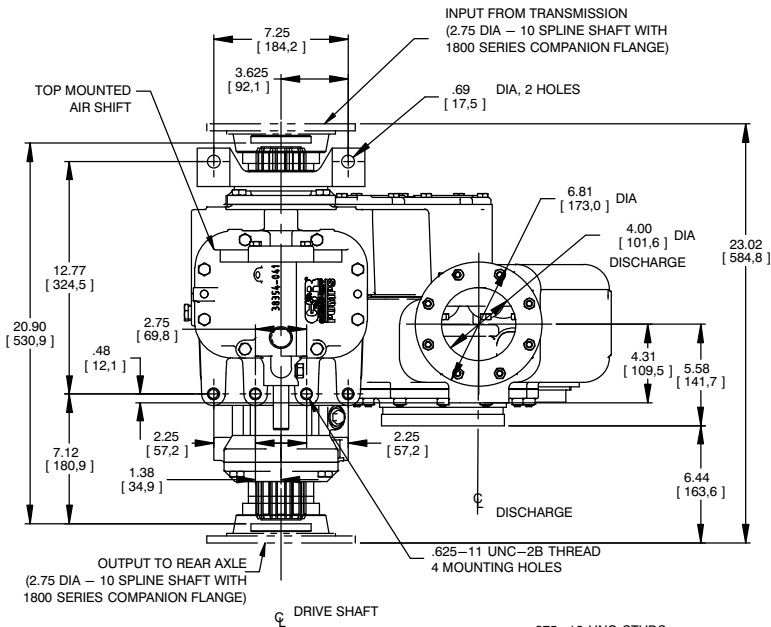
Printed in U.S.A.

**Specification Data**

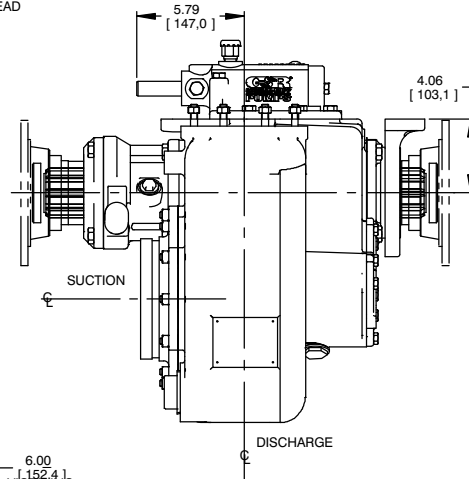
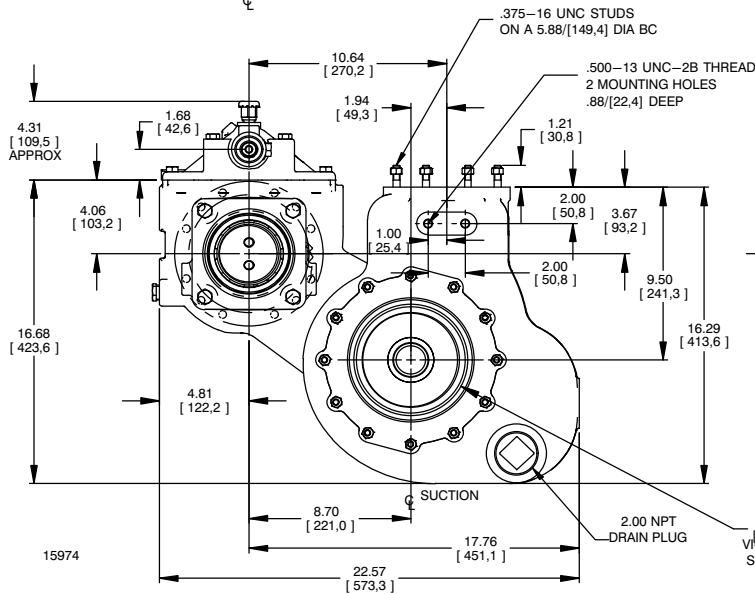
**SECTION 110, PAGE 653**

APPROXIMATE  
DIMENSIONS and  
WEIGHTS

	<b>06D1-GHH</b>	<b>06D3-GHH</b>
<b>NET WEIGHT:</b>	<b>260 LBS. (118 KG.)</b>	<b>336 LBS. (152 KG.)</b>
<b>SHIPPING WEIGHT:</b>	<b>323 LBS. (147 KG.)</b>	<b>386 LBS. (175 KG.)</b>
<b>EXPORT CRATE SIZE:</b>	<b>14.3 CU. FT. (0,40 CU. M.)</b>	<b>15.3 CU. FT.(0,43 CU. M.)</b>



DIMENSIONS:  
INCHES  
[MILLIMETERS]



TO PREVENT RAKING OF GEARS WITH AUTOMATIC TRANSMISSIONS, INSTALL BRAKE TO LIMIT INPUT SHAFT ROTATION TO NO MORE THAN 15 RPM, MAXIMUM DURING SHIFTING.

FOR AIR SHIFTER, 70 - 140 PSI (482 - 965 kPa) AIR PRESSURE REQUIRED AT GEARBOX AIR CYLINDER, 1/4" (6,4 mm) LINES RECOMMENDED.

GEARBOX THROUGH TORQUE CAPACITY BASED ON SHAFT & SPLINE SIZE				
DIESEL		TRANSMISSION	GASOLINE	
AUTO	MANUAL		AUTO	MANUAL
11,000	10,000	FT. - LBS. MAXIMUM	13,300	12,300
1,521	1,383	KGM MAXIMUM	1,839	1,701

Victaulic is a Registered Trademark of Victaulic Company of America.



**THE GORMAN-RUPP COMPANY • MANSFIELD, OHIO**

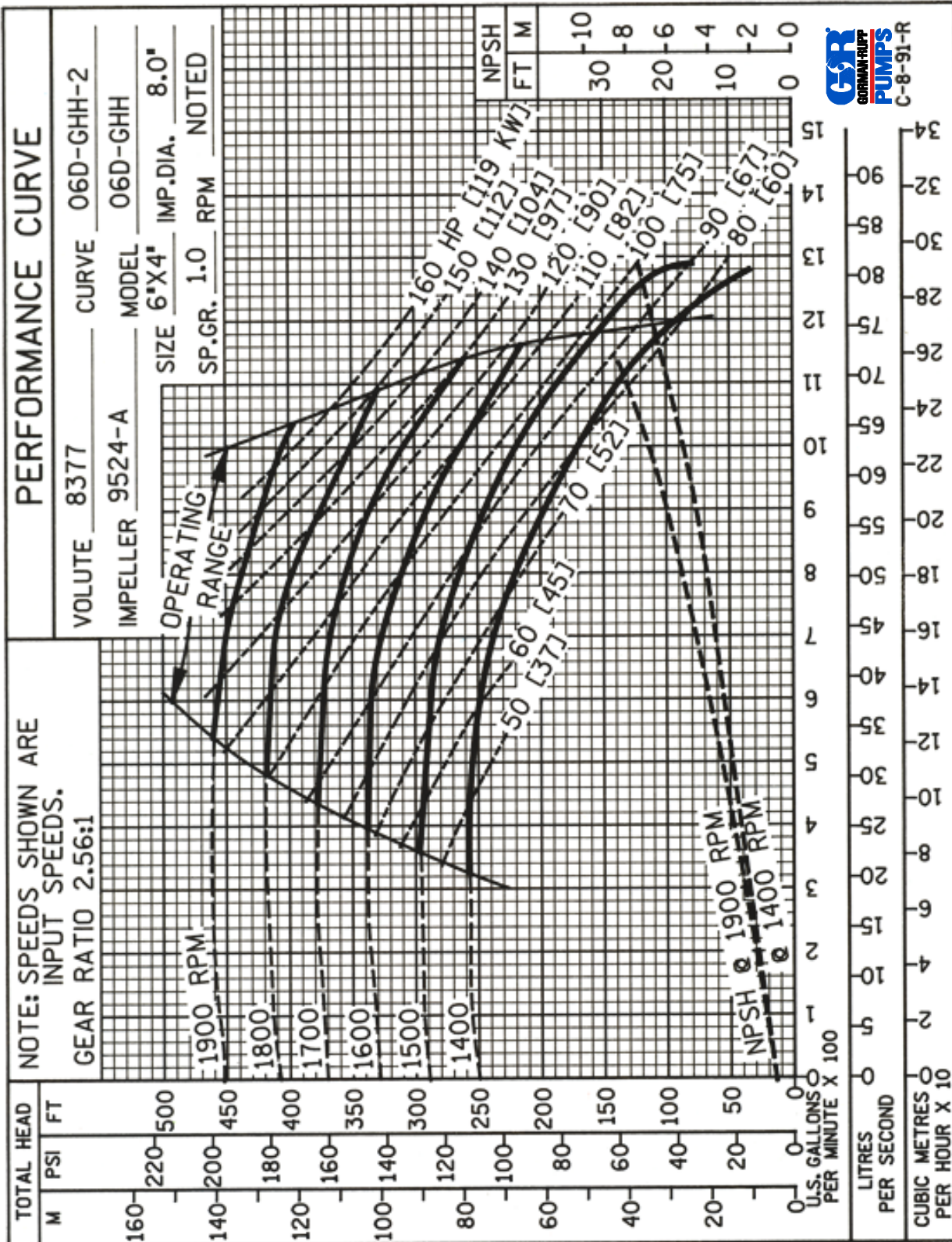
GORMAN-RUPP OF CANADA LIMITED • ST. THOMAS, ONTARIO, CANADA

Specifications Subject to Change Without Notice

Printed in U.S.A.



PERFORMANCE BASED ON WATER



THE GORMAN-RUPP COMPANY • MANSFIELD, OHIO

GORMAN-RUPP OF CANADA LIMITED • ST. THOMAS, ONTARIO, CANADA

www.grpumps.com

Specifications Subject to Change Without Notice

Printed in U.S.A.