



Self Priming Centrifugal Pump

Models 06C1-GHH and 06C3-GHH

Size 6" x 4"

PUMP SPECIFICATIONS

Size: 6" (152 mm) Victaulic® Suction x 4" (102 mm)
Petroleum Discharge Flange.

Casing: (06C1) Aluminum 356-T6;
(06C3) Ductile Iron 60-40-18.
Maximum Operating Pressure 200 psi (1379 kPa).*

Enclosed Type, Six Vane Impeller: Aluminum 356-T6.
11/16" (17,4 mm) Diameter Spherical Solids.

Impeller/Pinion Shaft: Alloy Steel 8620.

Replaceable Wear Rings: (2) Gray Iron 30.

Suction Head: (06C1) Aluminum 356-T6;
(06C3) Ductile Iron 80-55-06.

Gearbox Housing: Gray Iron 30.

Gear Lubrication: SAE 90 Gear Oil.

Gears: Alloy Steel 8620 and Carbon Steel 12L14.

Gear Ratio: 2.56:1 Increase.

Bearings: Open Single Row Ball, Roller and Tapered Roller.

Gaskets: Buna-N, Resistant Synthetic Rubber and Cork.

Hardware: Standard Plated Steel.

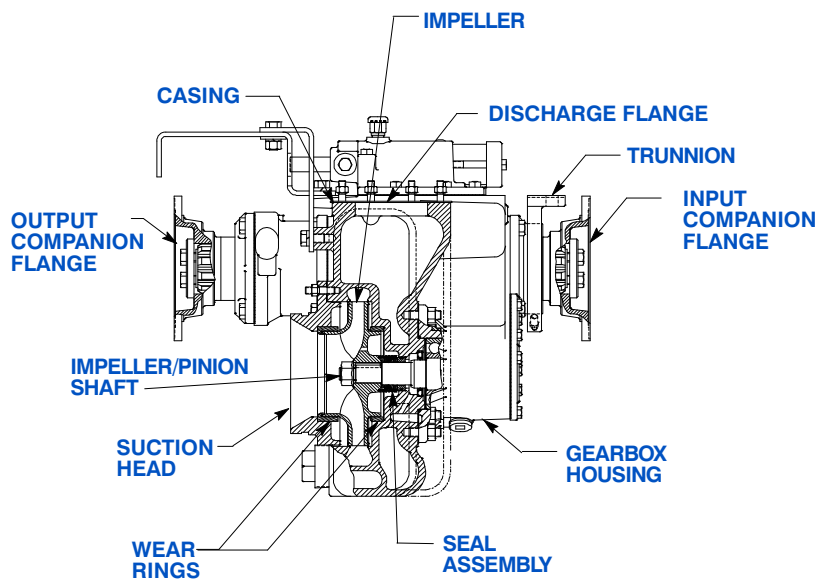
Standard Equipment: Mounting Cross Member and Trunnion
Assembly. Air Shift. 1800 Series Dana Flanges.

Optional Equipment: Bronze Impeller. Bronze Wear Rings.
Auxiliary P.T.O. Stub Shaft. Speedometer Adaptor.

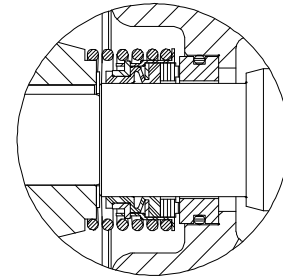
Victaulic is a Registered Trademark of Victaulic Company of America.

Dana is a Registered Trademark of Dana Corporation.

**Consult Factory for Applications Exceeding
Maximum Pressure and/or Temperature Indicated.*



Rotation: Clockwise Facing Gearbox Input Shaft.



SEAL DETAIL

Type 2, Mechanical, Self-Lubricated. Carbon Rotating Face. Ni-Resist Stationary Face. Fluorocarbon Elastomers (DuPont Viton® or Equivalent). Stainless Steel 18-8 Cage and Spring. Maximum Temperature of Liquid Pumped, 160°F (71°C).*



GORMAN-RUPP PUMPS

www.grpumps.com

Specifications Subject to Change Without Notice

Printed in U.S.A.

Specification Data

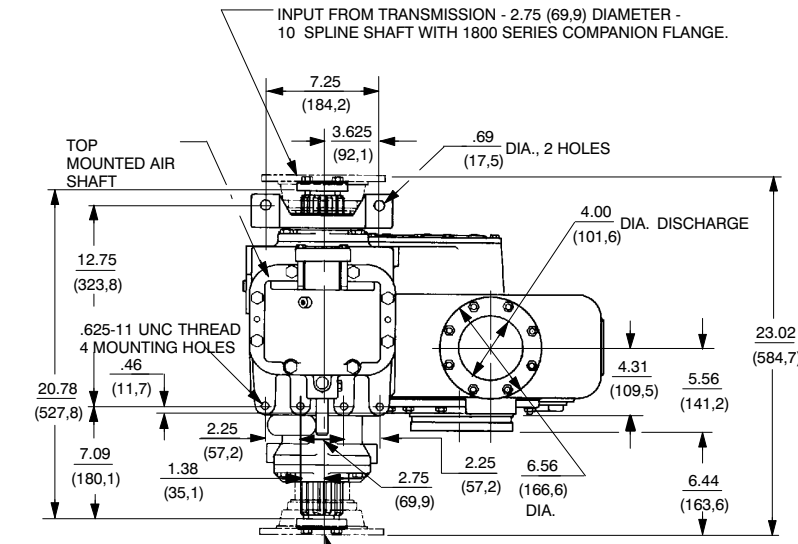
SECTION 110, PAGE 620

APPROXIMATE
DIMENSIONS and
WEIGHTS

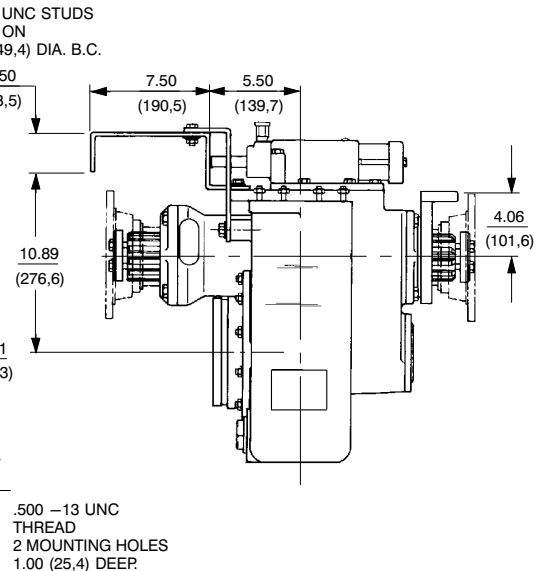
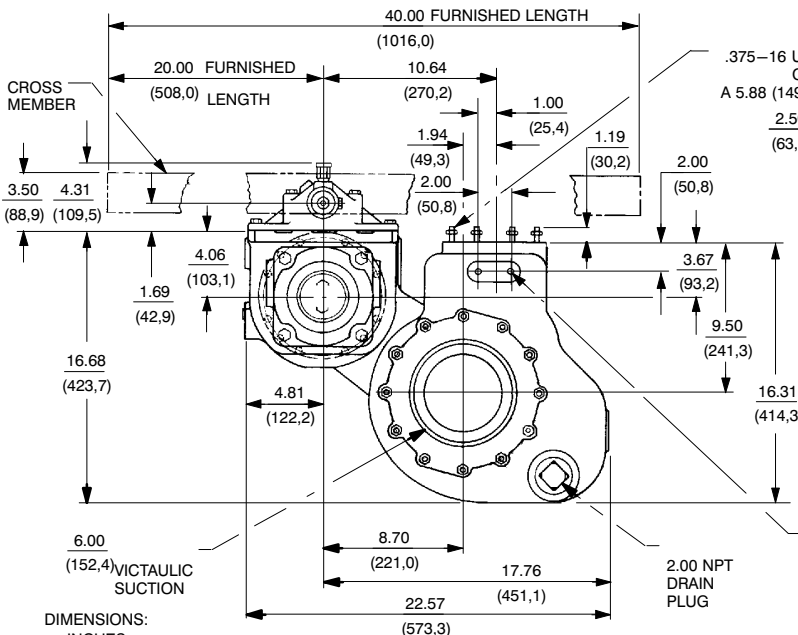
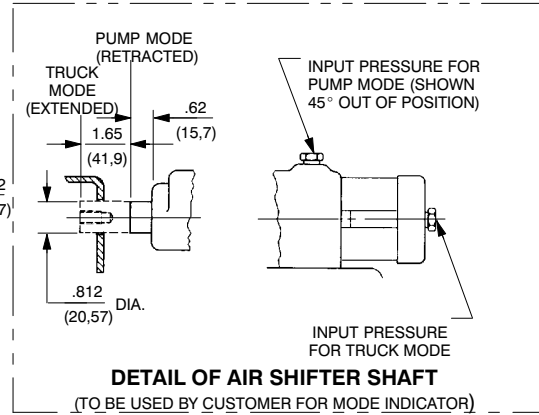
NET WEIGHT:
SHIPPING WEIGHT:
EXPORT CRATE SIZE:

06C1-GHH
283 LBS. (128 KG.)
366 LBS. (166 KG.)
14.3 CU. FT. (0,40 CU. M.)

06C3-GHH
386 LBS. (175 KG.)
427 LBS. (194 KG.)



OUTPUT TO REAR AXLE
2.75 (69,9) DIA. - 10 SPLINE SHAFT WITH 1800 SERIES COMPANION FLANGE.



DIMENSIONS:
INCHES
(MILLIMETERS)

GEARBOX THROUGH TORQUE CAPACITY BASED ON SHAFT & SPLINE SIZE				
DIESEL		TRANSMISSION	GASOLINE	
AUTO	MANUAL		AUTO	MANUAL
11,000	10,000	FT. - LBS. MAXIMUM	13,300	12,300
1,521	1,383	KGM MAXIMUM	1,839	1,701

TO PREVENT RAKING OF GEARS WITH AUTOMATIC TRANSMISSIONS, INSTALL BRAKE TO LIMIT INPUT SHAFT ROTATION TO NO MORE THAN 15 RPM, MAXIMUM DURING SHIFTING.

FOR AIR SHIFT, 70 - 140 PSI (482 - 965 kPa) AIR PRESSURE REQUIRED AT GEARBOX AIR CYLINDER, 1/4" (6,4 mm) LINES RECOMMENDED.

Victaulic is a Registered Trademark of Victaulic Company of America.



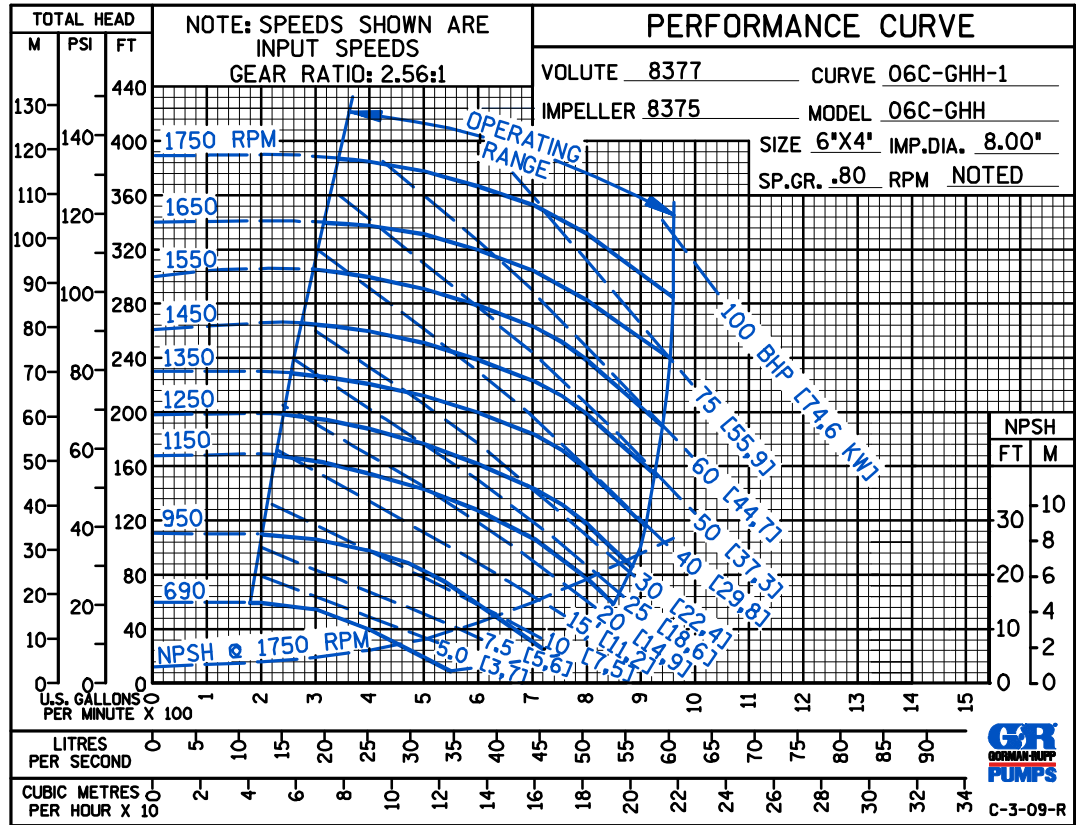
GORMAN-RUPP PUMPS

www.grpumps.com

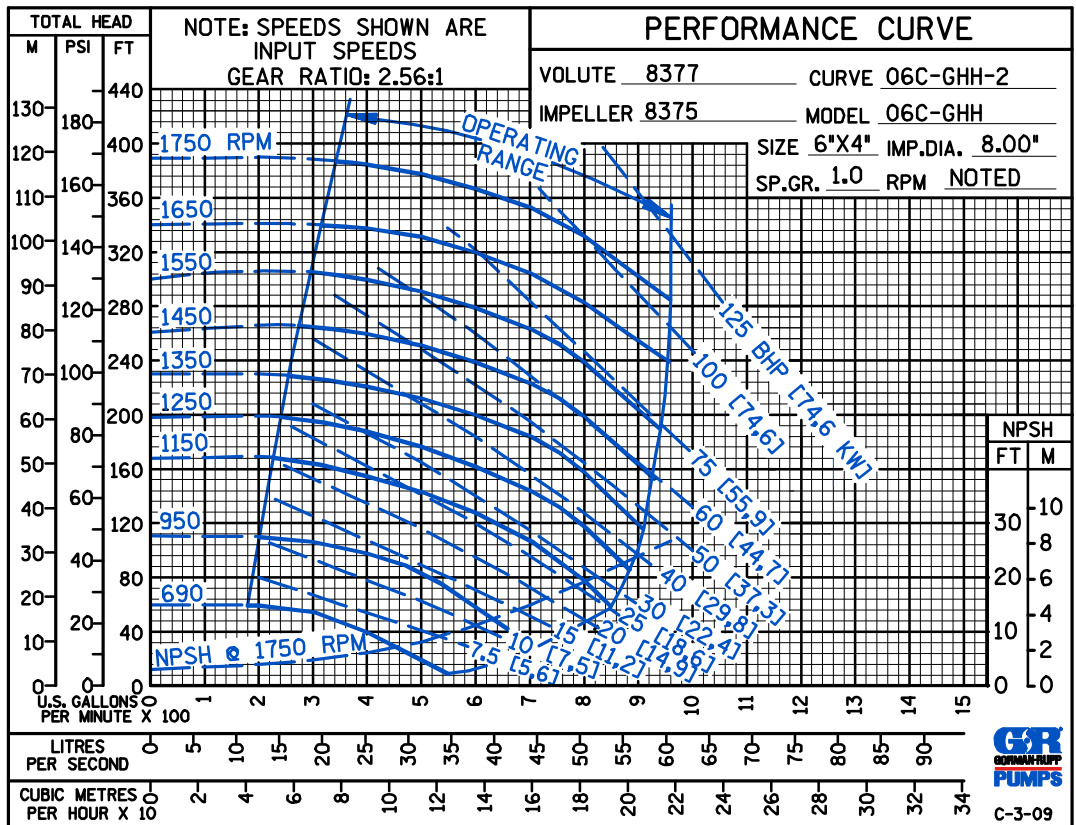
Specifications Subject to Change Without Notice

Printed in U.S.A.

PERFORMANCE
BASED ON
PETROLEUM



PERFORMANCE
BASED ON
WATER



GORMAN-RUPP PUMPS

www.grpumps.com

Specifications Subject to Change Without Notice

Printed in U.S.A.