



Standard Centrifugal Pump

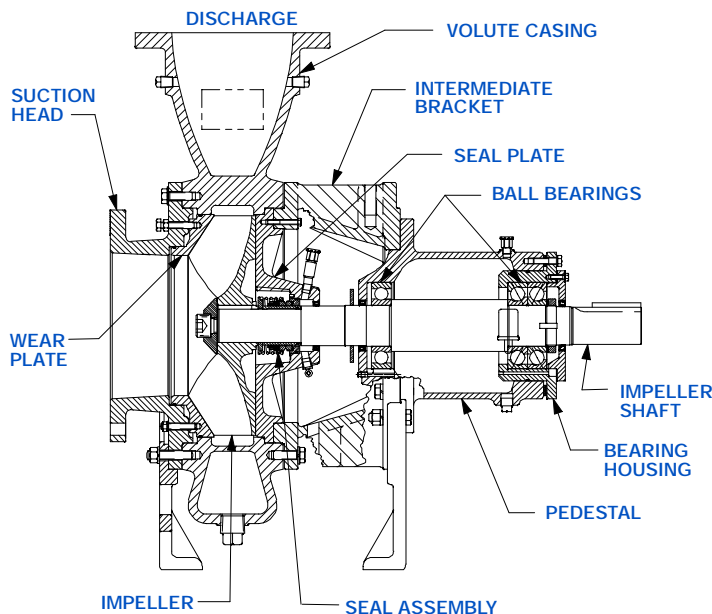
Basic Pedestal Model 612C60-B

Size 12" x 10"

PUMP SPECIFICATIONS

Size: 12" x 10" (304 mm x 254 mm) Flanged.
Volute Casing: Gray Iron No. 30. Maximum Operating Pressure 98 psi (676 kPa).
Open Type, Four Vane Impeller: Ductile Iron No. 80-60-03. Handles 2 3/4" (69,9 mm) Diameter Spherical Solids.
Impeller Shaft: Alloy Steel 4140.
Shaft Sleeve: Stainless Steel Type 304.
Replaceable Wear Plate: Ductile Iron No. 80-60-03.
Intermediate Bracket: Gray Iron No. 30.
Pedestal: Gray Iron No. 30.
Seal Plate: Gray Iron No. 30.
Radial Bearing: Open Single Row Ball.
Thrust Bearing: Open Double Row Ball.
Bearing and Seal Cavity Lubrication: SAE No. 30 Non-Detergent Oil.
Suction Head: Gray Iron No. 30.
O-Rings: Fluorocarbon (DuPont Viton® or Equivalent) and Buna-N.
Hardware: Standard Plated Steel.
Strainer.
Seal Cavity Bottle Oiler.
Bearing Cavity Bottle Oiler.

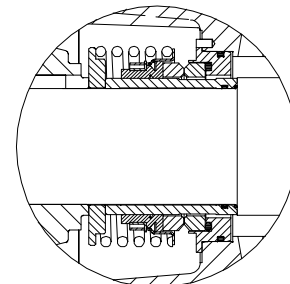
Optional Equipment: 12" NPT Flanged Suction Head. 10" NPT Discharge Flange.



SEAL SPECIFICATIONS

Mechanical, Oil-Lubricated, Double-Floating, Self-Aligning. Silicon Carbide Rotating and Stationary Faces. Stainless Steel No. 316 Stationary Seat. Fluorocarbon Elastomers (DuPont Viton® or Equivalent). Stainless Steel Type 18-8 Cage and Spring. Maximum Temperature of Liquid Pumped, 160°F (71°C).*

SEAL DETAIL



** Consult Factory for Applications Exceeding Maximum Pressure and/or Temperature Indicated.*



THE GORMAN-RUPP COMPANY • MANSFIELD, OHIO

GORMAN-RUPP OF CANADA LIMITED • ST. THOMAS, ONTARIO, CANADA

www.gormanrupp.com

Specifications Subject to Change Without Notice

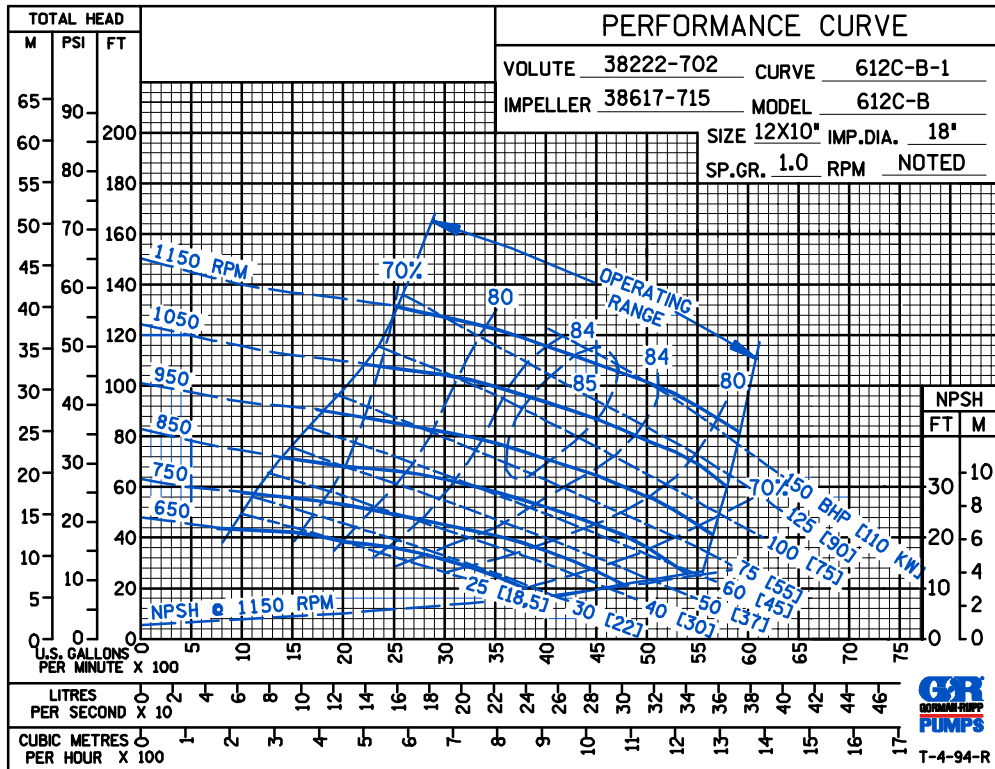
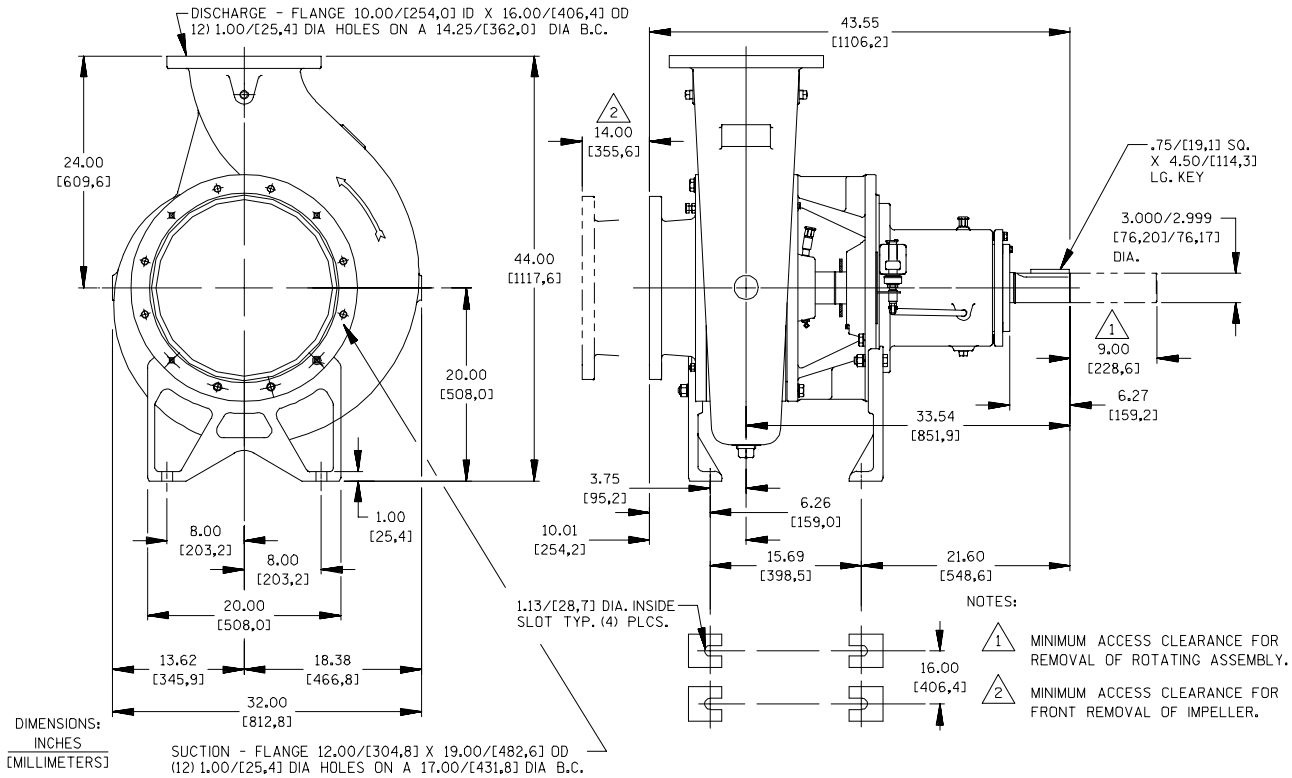
Printed in U.S.A.

Specification Data

SECTION 70, PAGE 1730

APPROXIMATE
DIMENSIONS and WEIGHTS

NET WEIGHT: 1820 LBS. (825,5 KG.)
SHIPPING WEIGHT: 1900 LBS. (861,8 KG.)
EXPORT CRATE: 69.4 CU. FT. (1,97 CU. M.)



THE GORMAN-RUPP COMPANY • MANSFIELD, OHIO

GORMAN-RUPP OF CANADA LIMITED • ST. THOMAS, ONTARIO, CANADA

Specifications Subject to Change Without Notice

Printed in U.S.A.