

ACE



Standard Centrifugal Pump

Model 612M60-B

Size 12" x 12"

PUMP SPECIFICATIONS

Size: 12" x 12" (304 mm x 304 mm) Flanged.

Casing: Gray Iron 30.

Maximum Operating Pressure 73 psi (503 kPa).*

Enclosed Type, Three Vane Impeller: Ductile Iron 60-40-18.

Handles 3" (76,2 mm) Diameter Spherical Solids.

Impeller Shaft: Stainless Steel 17-4PH.

Shaft Sleeve: Stainless Steel 304.

Replaceable Suction Head Wear Ring: Copper Alloy C83600.

Replaceable Impeller Wear Ring: Ductile Iron 80-60-03.

Pedestal: Gray Iron 30.

Seal Plate: Gray Iron 30.

Radial Bearings: Two, Open Single Row Ball.

Thrust Bearing: Open Single Row Roller.

Bearing and Seal Cavity Lubrication: SAE 30 Non-Detergent Oil.

Suction Head: Gray Iron 30.

O-Ring: Buna-N and Neoprene.

Gaskets: Vegetable Fiber

Hardware: Standard Plated Steel.

Strainer.

Bearing Cavity Oil Level Sight Gauge.

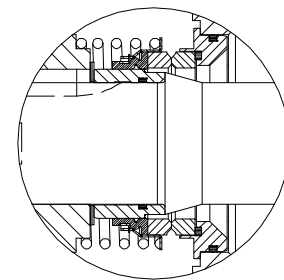
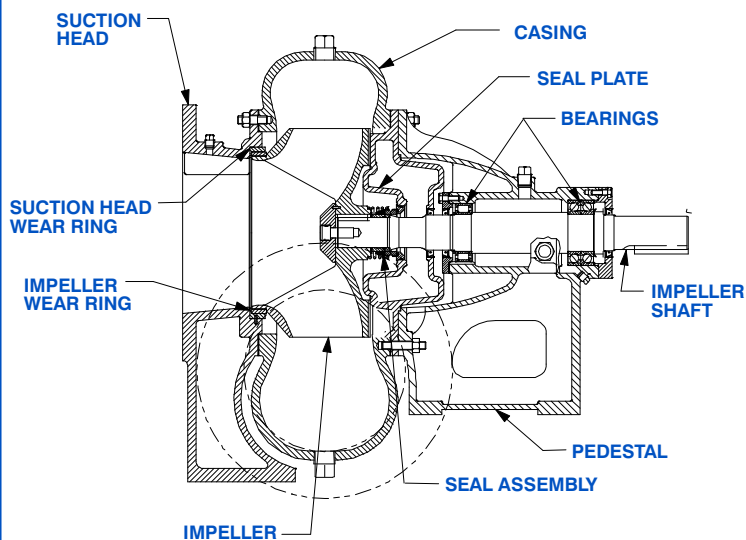
Seal Cavity Bottle Oiler.



Optional Equipment: 12" NPT Flanged Suction Head.

12" NPT Discharge Flange. Hand Primer.

**Consult Factory for Applications Exceeding Maximum Pressure and/or Temperature Indicated.*



SEAL DETAIL

Mechanical, Oil-Lubricated, Double-Floating, Self-Aligning. Silicon Carbide Rotating and Stationary Faces. Stainless Steel 316 Stationary Seat. Fluorocarbon Elastomers (DuPont Viton® or Equivalent). Stainless Steel Type 18-8 Cage and Spring. Maximum Temperature of Liquid Pumped, 160°F (71°C).*



THE GORMAN-RUPP COMPANY • MANSFIELD, OHIO

GORMAN-RUPP OF CANADA LIMITED • ST. THOMAS, ONTARIO, CANADA

www.gormanrupp.com

Specifications Subject to Change Without Notice

Printed in U.S.A.

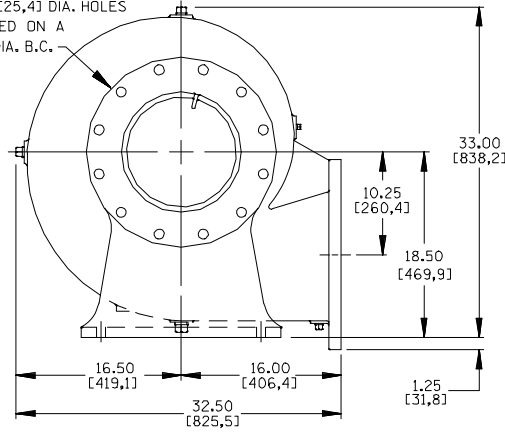
Specification Data

APPROXIMATE
DIMENSIONS and WEIGHTS

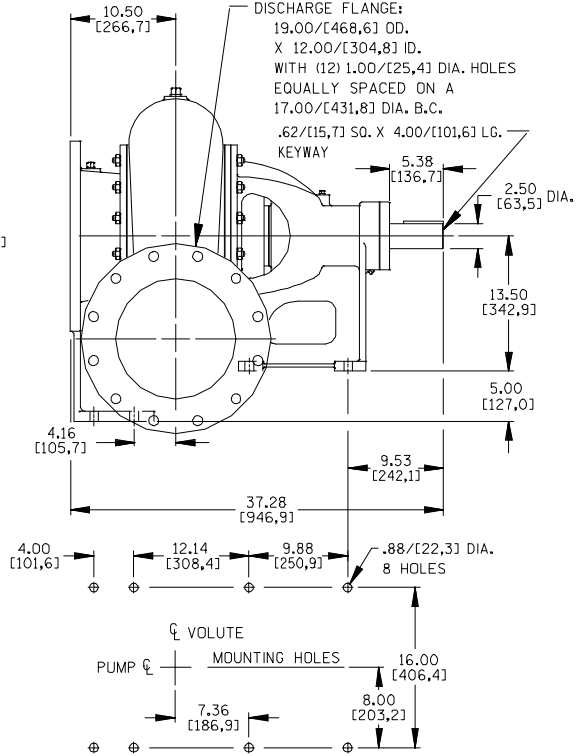
NET WEIGHT: 975 LBS. (442,3 KG.)
SHIPPING WEIGHT: 1028 LBS. (466,3 KG.)
EXPORT CRATE: 42.0 CU. FT. (1,19 CU. M.)

SECTION 70, PAGE 1610

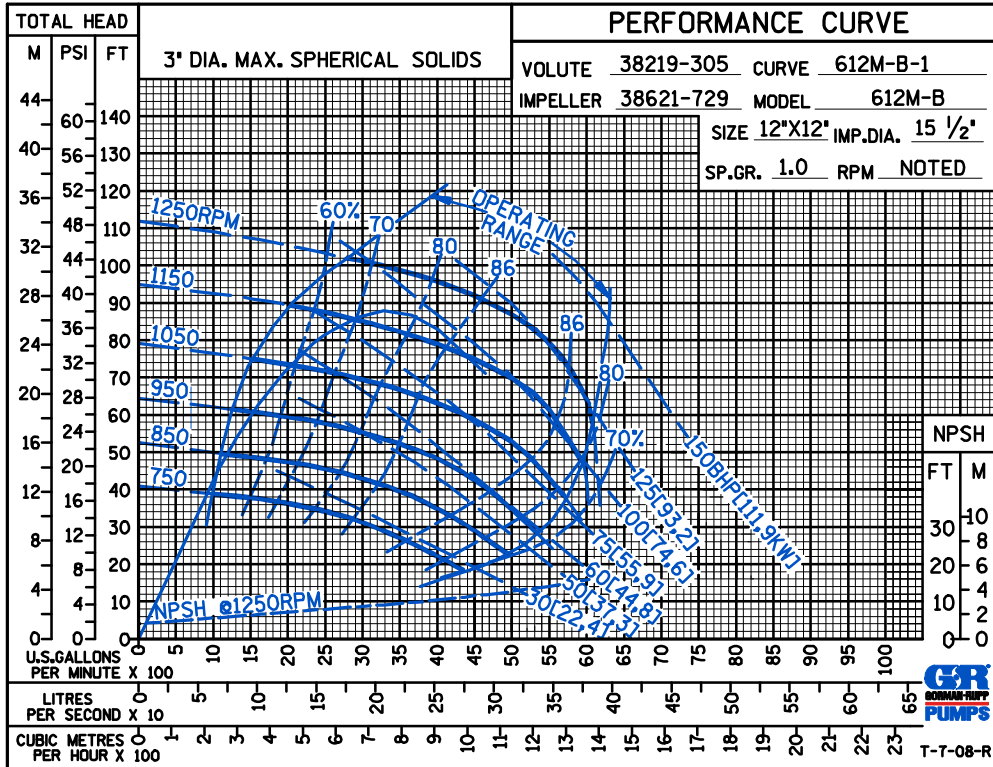
SUCTION FLANGE:
19.00/[468,6] OD.
X 12.00/[304,8] ID.
WITH (12) 1.00/[25,4] DIA. HOLES
EQUALLY SPACED ON A
17.00/[431,8] DIA. B.C.



DISCHARGE FLANGE:
19.00/[468,6] OD.
X 12.00/[304,8] ID.
WITH (12) 1.00/[25,4] DIA. HOLES
EQUALLY SPACED ON A
17.00/[431,8] DIA. B.C.



DIMENSIONS:
INCHES
[MILLIMETERS]



THE GORMAN-RUPP COMPANY • MANSFIELD, OHIO

GORMAN-RUPP OF CANADA LIMITED • ST. THOMAS, ONTARIO, CANADA

Specifications Subject to Change Without Notice

Printed in U.S.A.