

ACE

# Standard Centrifugal Pump



Basic Pedestal  
Model 66A2-B  
Size 6" x 6"

## PUMP SPECIFICATIONS

**Size:** 6" (152 mm) Female NPT Suction x 6" (152 mm) Flanged Discharge.

**Volute Casing:** Gray Iron No. 30. Maximum Operating Pressure 67 psi (462 kPa).\*

**Open Type, Six Vane Impeller:** Gray Iron No. 30.  
Handles 1 1/8" (28,6 mm) Diameter Spherical Solids.

**Impeller Shaft:** Alloy Steel No. 4140.

**Balance Ring:** Copper Alloy No. C83600.

**Pedestal:** Gray Iron No. 30.

**Seal Liner:** Copper Alloy No. C26000.

**Radial/Thrust Bearings:** Open Single Row Ball.

**Bearing Lubrication:** No. 2 Lithium Base Grease.

**Suction Head:** Gray Iron No. 30.

**Gaskets:** Vegetable Fiber.

**Hardware:** Standard Plated Steel.

**Strainer.**

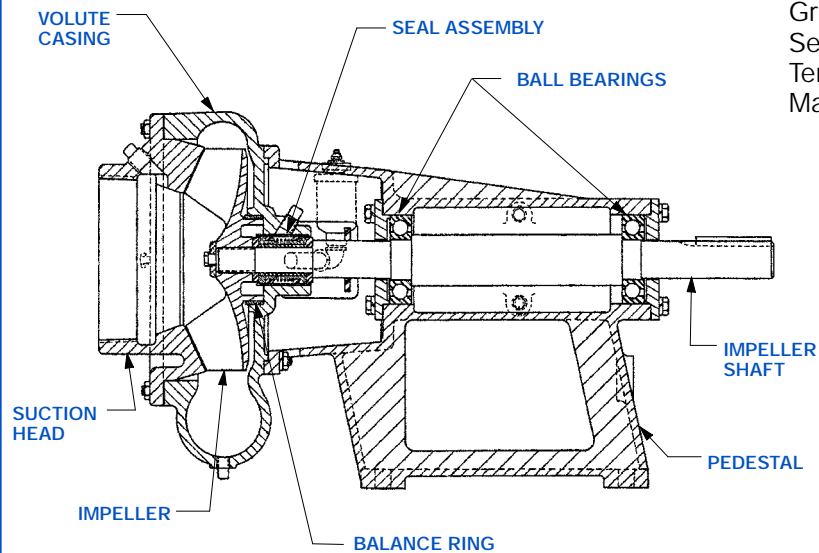
**Optional Equipment:** 6" NPT Female Discharge Flange. 6" Discharge Check Valve. Hand Primer.



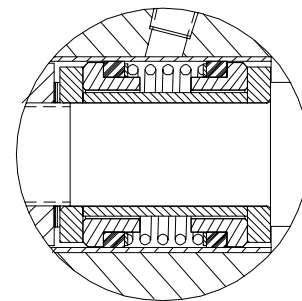
SHOWN with OPTIONAL NPT DISCHARGE FLANGE.

## SEAL SPECIFICATIONS

Double, Grease Lubricated with Spring-Loaded Grease Cup. Sintered Bronze Stationary Seal Seats. Steel Rotating Faces. Maximum Temperature of Liquid Pumped, 110°F (43°C).\* Maximum Suction Pressure 10 psi (69 kPa).



## SEAL DETAIL



\* Consult Factory for Applications Exceeding Maximum Pressure and/or Temperature Indicated.



THE GORMAN-RUPP COMPANY • MANSFIELD, OHIO

GORMAN-RUPP OF CANADA LIMITED • ST. THOMAS, ONTARIO, CANADA

www.gormanrupp.com

Specifications Subject to Change Without Notice

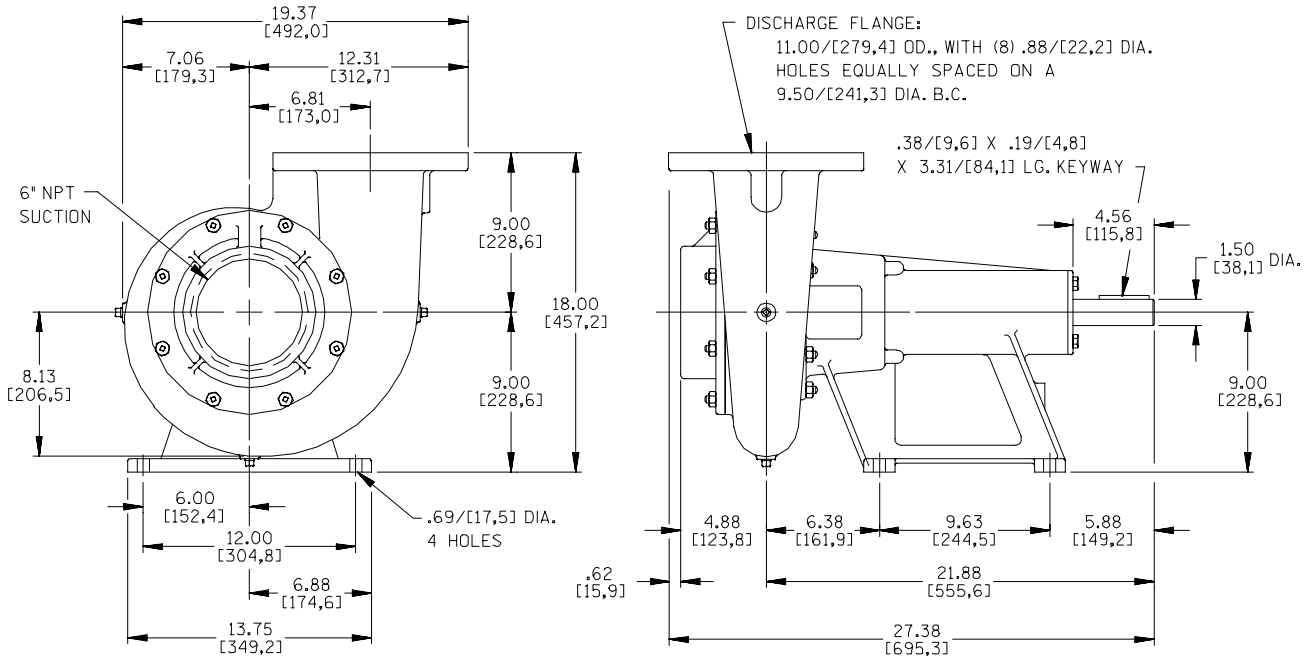
Printed in U.S.A.

**Specification Data**

APPROXIMATE  
DIMENSIONS and WEIGHTS

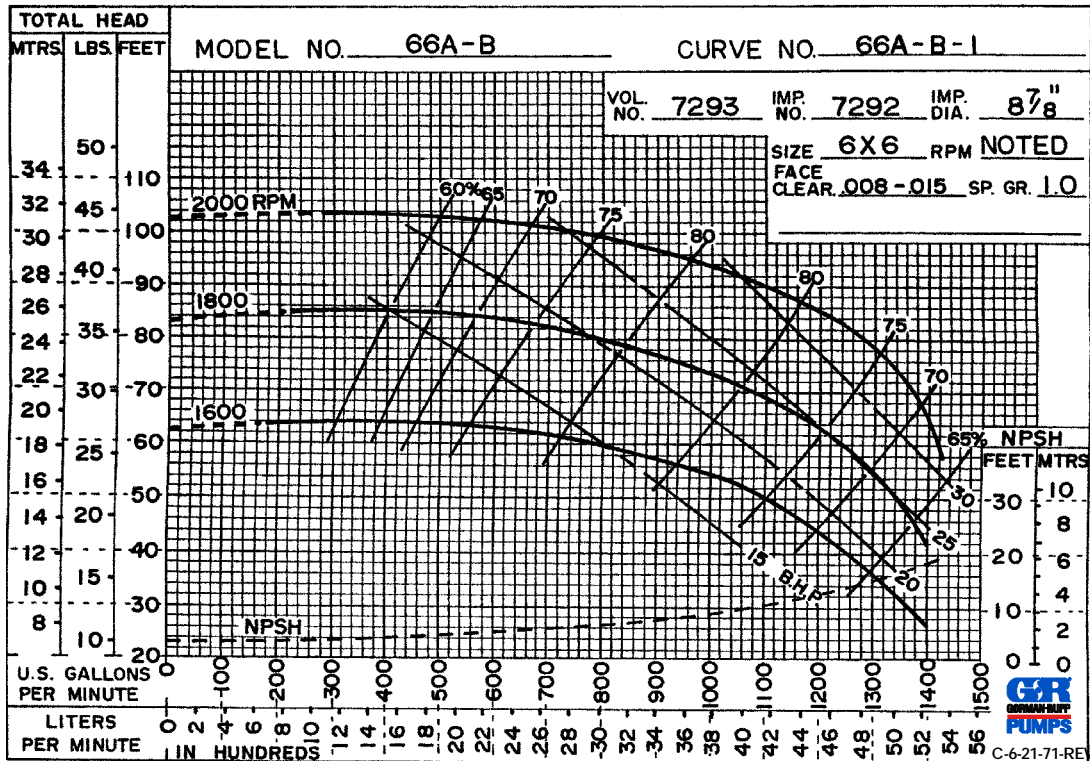
NET WEIGHT: 200 LBS. (90,7 KG.)  
SHIPPING WEIGHT: 215 LBS. (97,5 KG.)  
EXPORT CRATE: 12.1 CU. FT. (0,34 CU. M.)

SECTION 70, PAGE 1175



DIMENSIONS:  
INCHES  
[MILLIMETERS]

VERTICAL DISCHARGE STANDARD - HORIZONTAL DISCHARGE OPTIONAL



THE GORMAN-RUPP COMPANY • MANSFIELD, OHIO

GORMAN-RUPP OF CANADA LIMITED • ST. THOMAS, ONTARIO, CANADA

Specifications Subject to Change Without Notice

Printed in U.S.A.