

ACE

# Standard Centrifugal Pump



## Basic Pedestal Model 64A2-B Size 4" x 4"

### PUMP SPECIFICATIONS

**Size:** 4" x 4" (102 mm x 102 mm) NPT Female Suction and Discharge.

**Volute Casing:** Gray Iron No. 30. Maximum Operating Pressure 169 psi (1165 kPa).\*

**Enclosed Type, Five Vane Impeller:** Gray Iron No. 30. Handles 3/8" (9,5 mm) Diameter Spherical Solids.

**Impeller Shaft:** Alloy Steel No. 4140.

**Replaceable Wear Rings:** Copper Alloy No. C83600.

**Pedestal:** Gray Iron No. 30.

**Pedestal Adaptor:** Gray Iron No. 30.

**Seal Liner:** Copper Alloy No. C26000.

**Bearing Cap:** Gray Iron No. 30.

**Radial Bearing:** Open Double Row Ball.

**Thrust Bearing:** Open Single Row Ball.

**Bearing Lubrication:** SAE No. 30 Non-Detergent Oil.

**Suction Head:** Gray Iron No. 30.

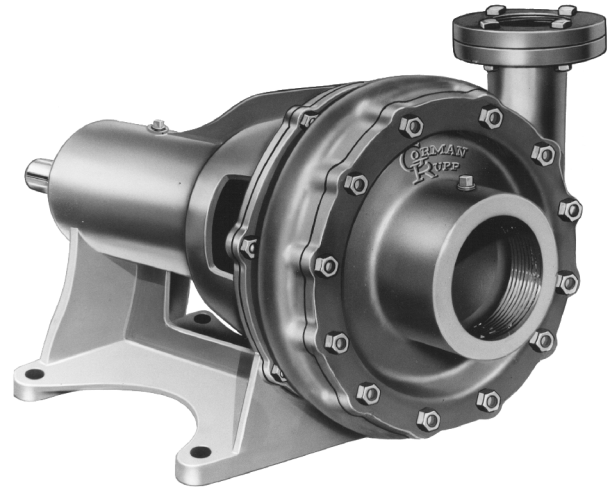
**Discharge Flange:** Gray Iron No. 30.

**Gaskets:** Vegetable Fiber.

**Hardware:** Standard Plated Steel.

**Oil Level Sight Gauge.**

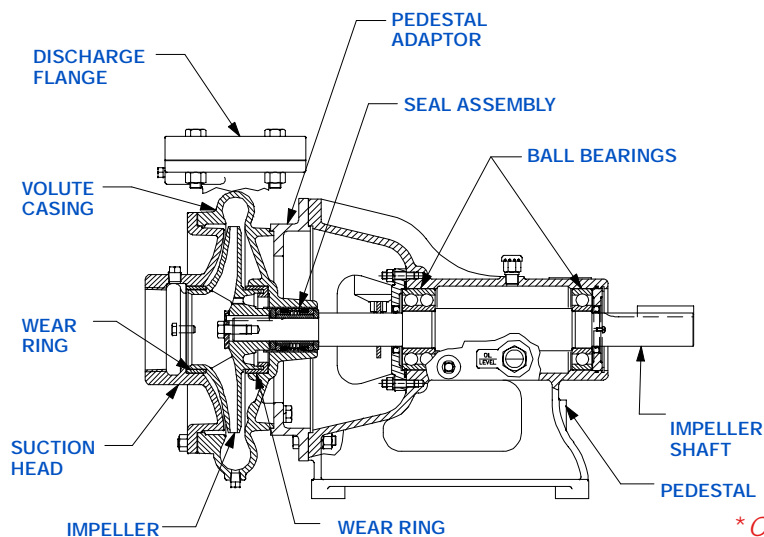
**Strainer.**



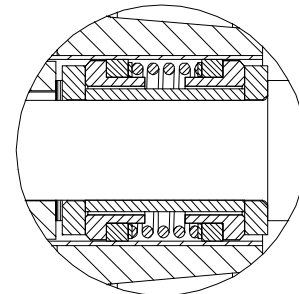
**Optional Equipment:** Discharge Check Valve. Hand Primer.

### SEAL SPECIFICATIONS

Double, Grease Lubricated with Spring-Loaded Grease Cup. Sintered Bronze Stationary Seal Seats. Steel Rotating Faces. Maximum Temperature of Liquid Pumped, 110°F (43°C).\* Maximum Suction Pressure 10 psi (69 kPa).



### SEAL DETAIL



*\*Consult Factory for Applications Exceeding Maximum Pressure and/or Temperature Indicated.*



THE GORMAN-RUPP COMPANY • MANSFIELD, OHIO

GORMAN-RUPP OF CANADA LIMITED • ST. THOMAS, ONTARIO, CANADA

www.gormanrupp.com

Specifications Subject to Change Without Notice

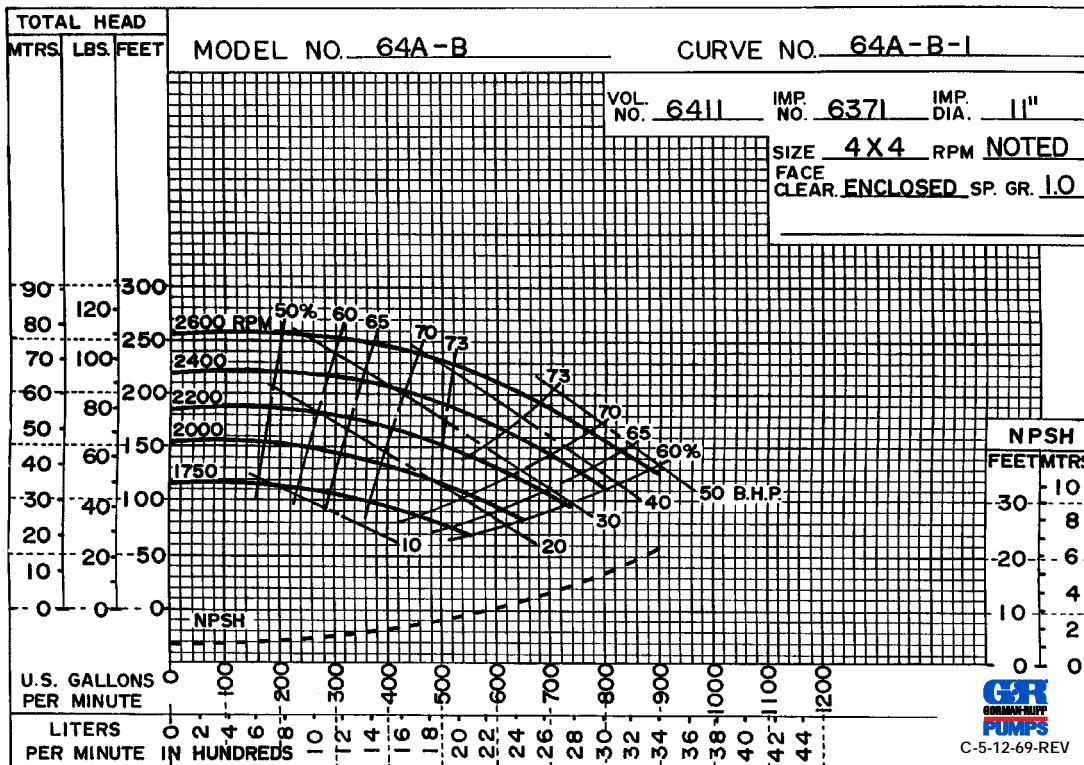
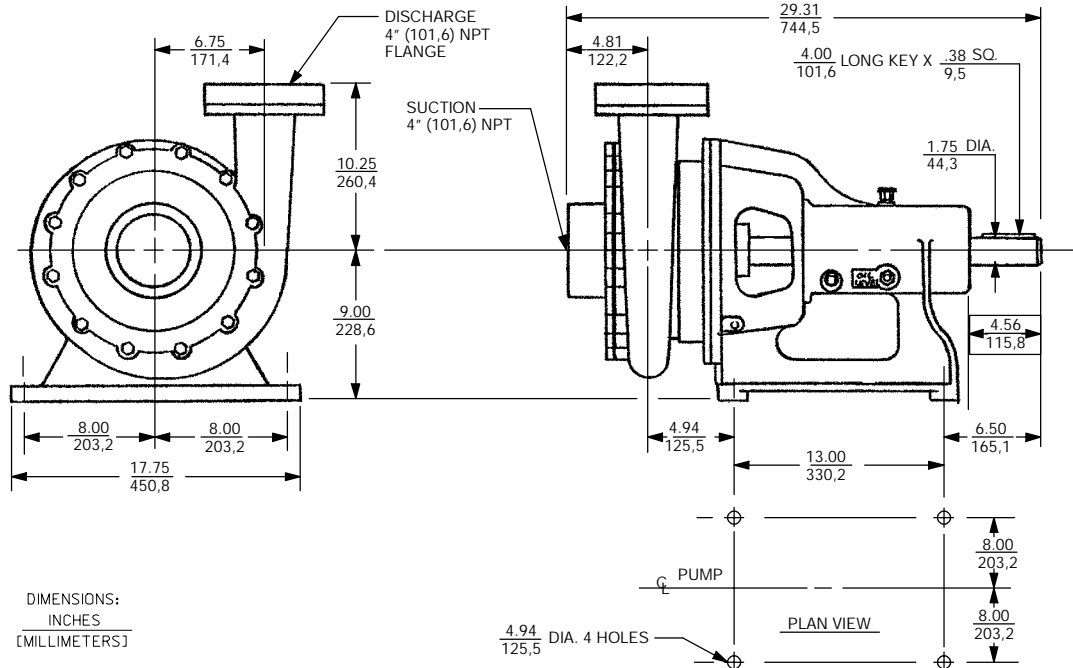
Printed in U.S.A.

Specification Data

SECTION 70, PAGE 650

APPROXIMATE  
DIMENSIONS and WEIGHTS

NET WEIGHT: 255 LBS. (115,7 KG.)  
SHIPPING WEIGHT: 270 LBS. (122,5 KG.)  
EXPORT CRATE: 12.1 CU. FT. (0.34 CU. M.)



THE GORMAN-RUPP COMPANY • MANSFIELD, OHIO

GORMAN-RUPP OF CANADA LIMITED • ST. THOMAS, ONTARIO, CANADA

Specifications Subject to Change Without Notice

Printed in U.S.A.