

Basic

Standard Centrifugal Pump

Model 62E31-B

Size 3" x 2"



PUMP SPECIFICATIONS

Size: 3" x 2" (76 mm x 52 mm) Flanged.

Casing: Ductile Iron 65-45-12.

Maximum Operating Pressure 60 psi (414 kPa).*

Enclosed Type, Four Vane Impeller: Aluminum Alloy 356-T6.
Handles 1/4" (6,4 mm) Diameter Spherical Solids.

Impeller Shaft: Carbon Steel 1045.

Bearing Housing: Ductile Iron 65-45-12.

Bearing Housing Lubrication: Grease.

Radial and Thrust Bearings: Sealed Single Row Ball.

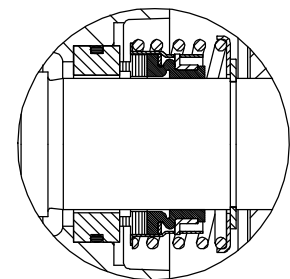
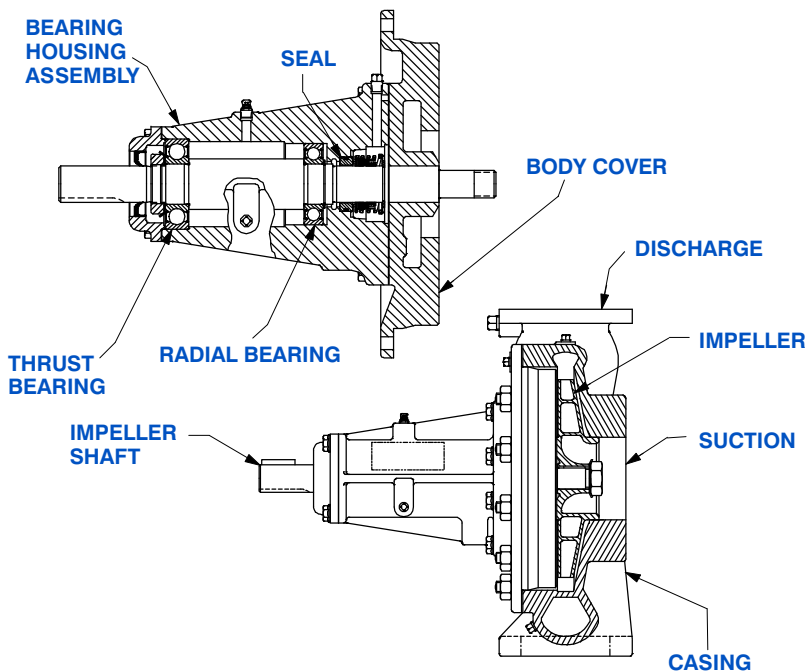
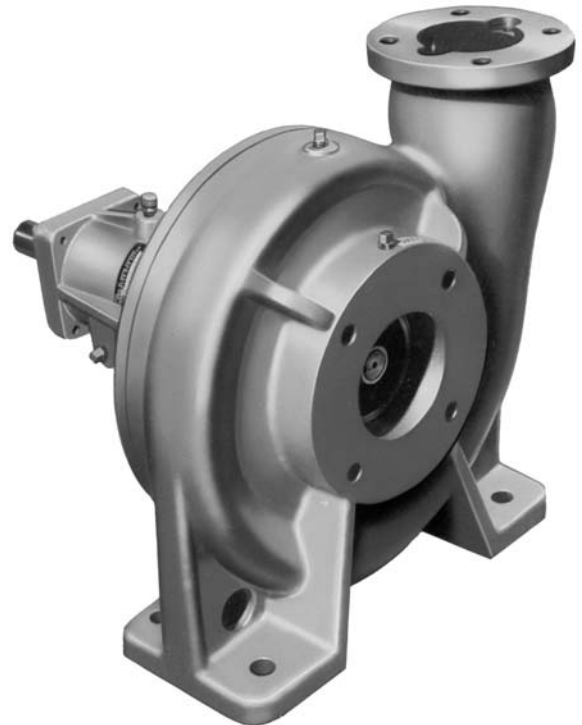
Body Cover : Ductile Iron 65-45-12.

Gaskets: Vegetable Fiber and Cork.

Hardware: Standard Plated Steel.

Optional Equipment: 150# Steel 3" NPT Suction and 2" NPT Discharge Flange Kit. Strainer. Copper Alloy C93700 Impeller. PTFE Seal with Fluorocarbon O-Ring. PTFE Seal with Buna-N O-Ring. Stainless Steel 416 Impeller Shaft.

**Consult Factory for Applications Exceeding Maximum Pressure and/or Temperature Indicated.*



SEAL DETAIL

Type 2, Mechanical Self-Lubricated. Carbon Rotating Face. Ni-Resist Stationary Face. Fluorocarbon Elastomers (DuPont Viton® or Equivalent). Stainless Steel 18-8 Cage and Spring. Maximum Temperature of Liquid Pumped, 160°F [71°C].*



GORMAN-RUPP PUMPS

www.grpumps.com

Specifications Subject to Change Without Notice

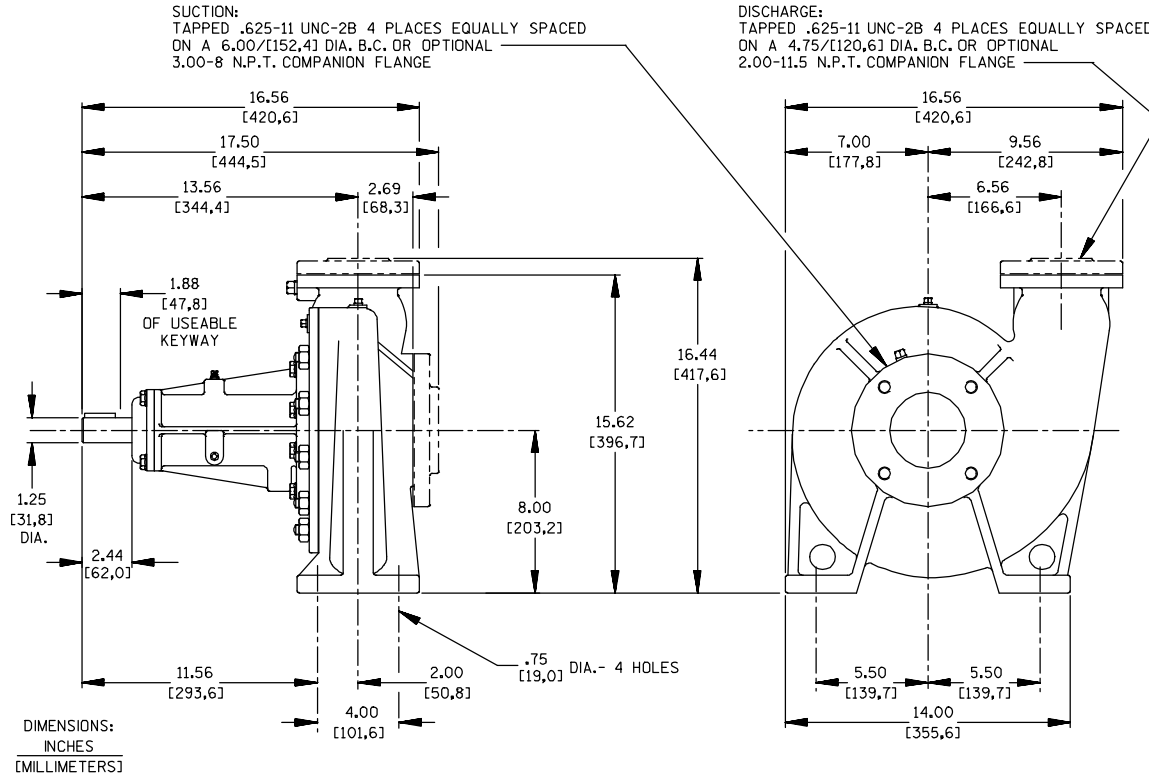
Printed in U.S.A.

Specification Data

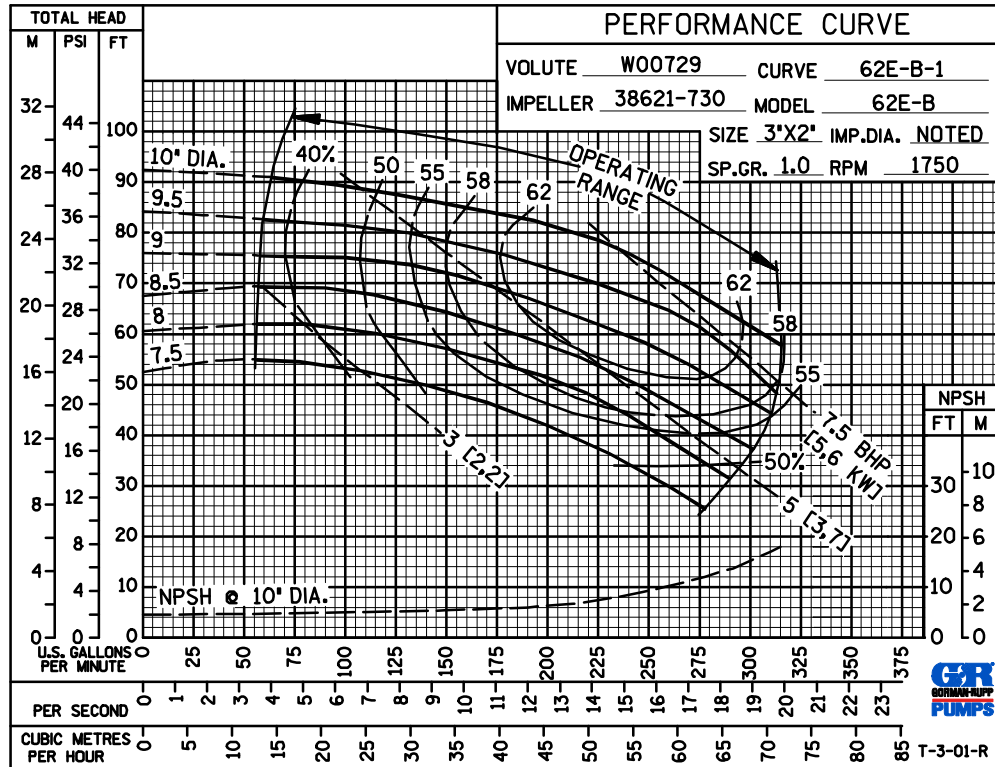
NET WEIGHT: 145 LBS. (65,8 KG.)
SHIPPING WEIGHT: 159 LBS. (72,1 KG.)
EXPORT CRATE: 5.6 CU. FT. (0,16 CU. M.)

SECTION 70, PAGE 200

APPROXIMATE
DIMENSIONS and WEIGHTS



PERFORMANCE
BASED ON
WATER



GORMAN-RUPP PUMPS

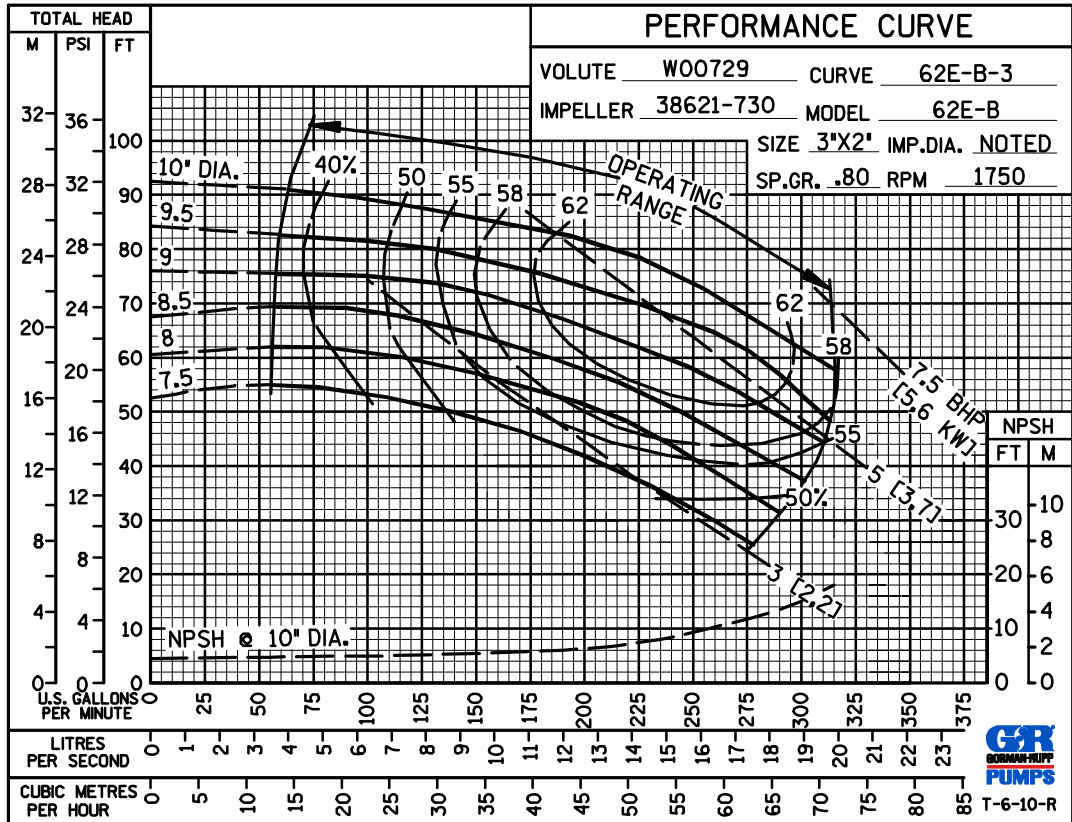
www.grpumps.com

Specifications Subject to Change Without Notice

Printed in U.S.A.

A B C E

PERFORMANCE
BASED ON
PETROLEUM



GORMAN-RUPP PUMPS

www.grpumps.com

Specifications Subject to Change Without Notice

Printed in U.S.A.