

Standard Centrifugal Pump

Model 6516A31-B

Size 18" x 16"



PUMP SPECIFICATIONS

Size: 18" x 16" (457 mm x 406 mm) Flanged.

Casing: Ductile Iron 65-45-12.

Maximum Casing Pressure 136 psi (938 kPa).*

Enclosed Type, Four Vane Impeller: Ductile Iron 80-55-06.

Handles 4" (101,6 mm) Diameter Spherical Solids.

Suction Spool: Ductile Iron 65-45-12.

Impeller Shaft: Alloy Steel 4150.

Replaceable Wear Ring: Ductile Iron 65-45-12.

Pedestal: Gray Iron 30.

Seal Plate: Ductile Iron 65-45-12.

Shaft Sleeve: Stainless Steel 303/304.

Radial Bearing: Open Single Row Straight Roller.

Radial/Thrust Bearing: (2) Open Single Row Tapered Rollers
Paired Face to Face.

Bearing and Seal Cavity Lubrication: SAE 30 Non-Detergent Oil.

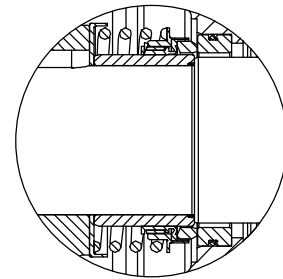
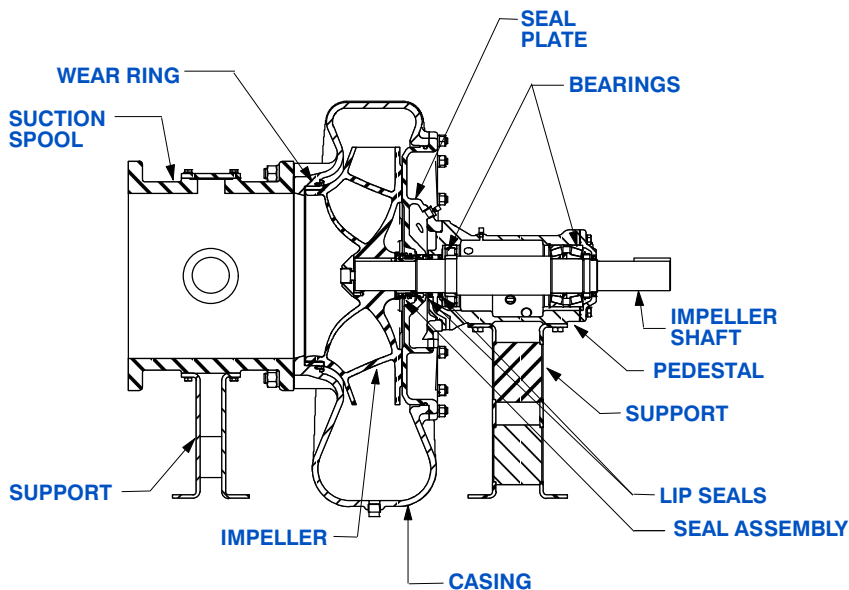
Gaskets: Vegetable Fiber and Buna-N.

O-Rings: Buna-N.

Hardware: Standard Plated Steel.

Bearing and Seal Cavity Oil Level Sight Gauges.

**Consult Factory for Applications Exceeding Maximum Pressure and/or Temperature Indicated.*



SEAL DETAIL

Mechanical, Oil-Lubricated. Silicon Carbide Rotating Face and Stationary Seat. Fluorocarbon Elastomers (DuPont Viton® or Equivalent). Stainless Steel 316 Cage and Stainless Steel 18-8 Spring. Maximum Temperature of Liquid Pumped 160°F (71°C).*



GORMAN-RUPP PUMPS

www.grpumps.com

Specifications Subject to Change Without Notice

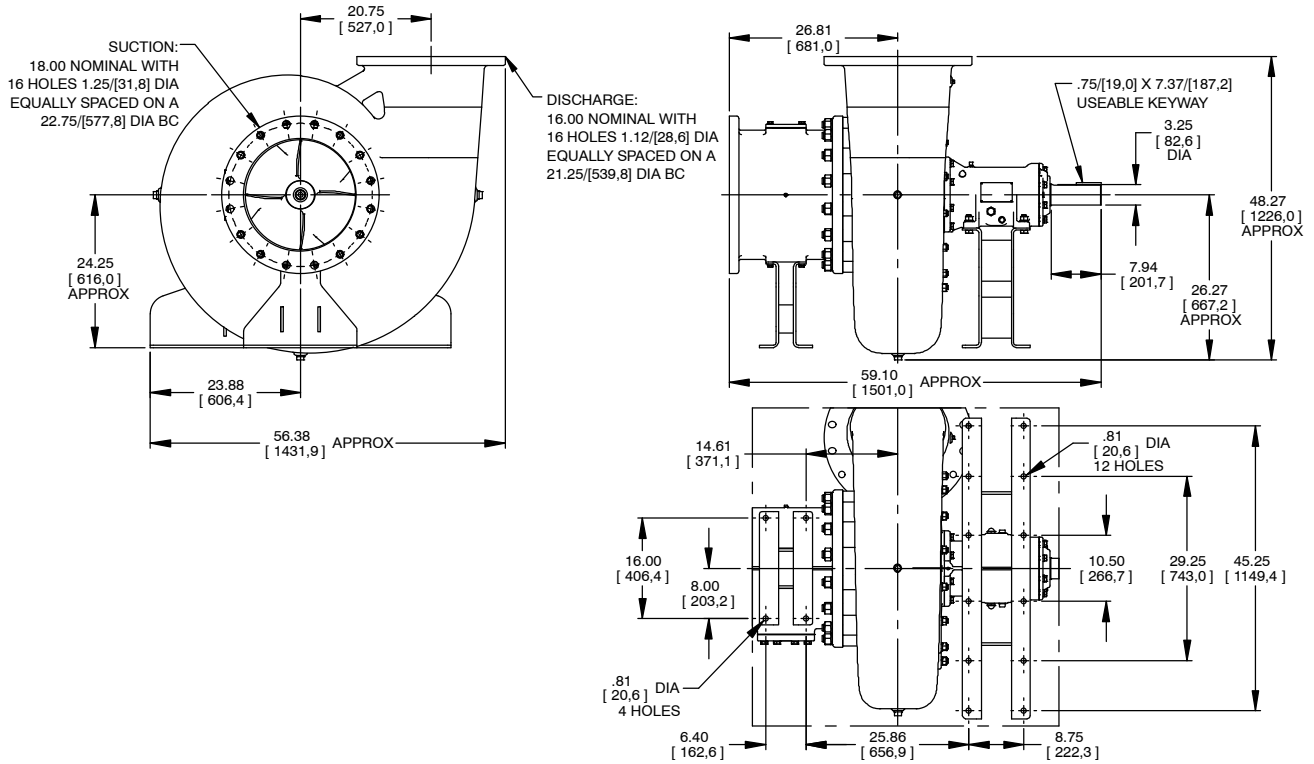
Printed in U.S.A.

Specification Data

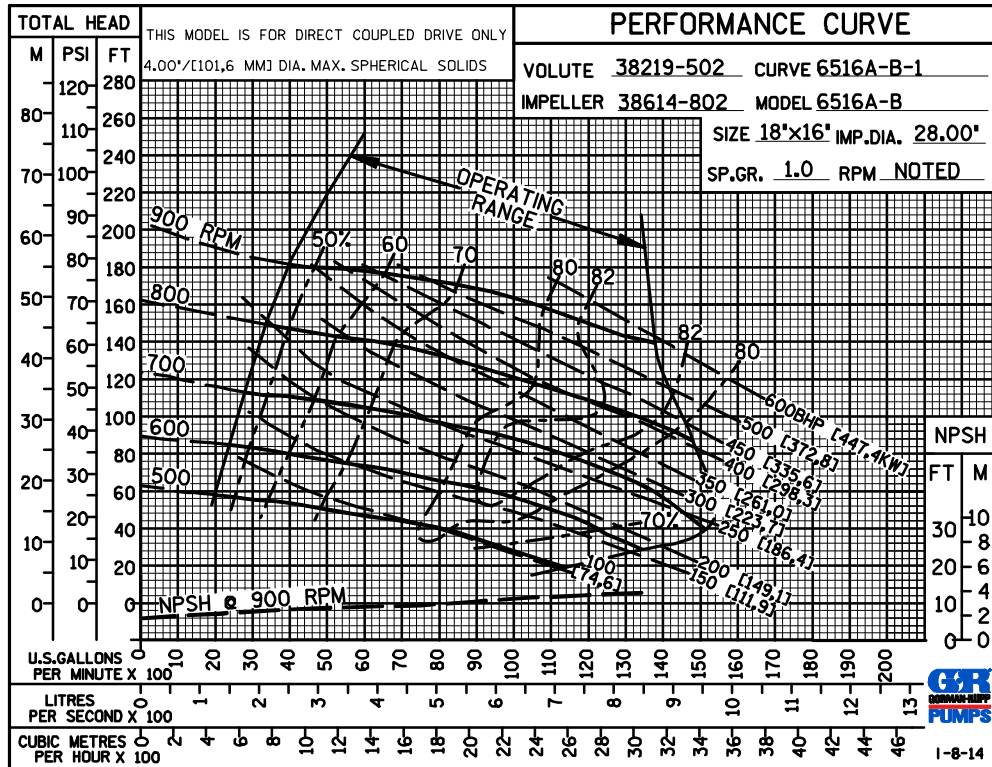
SECTION 65, PAGE 801

APPROXIMATE
DIMENSIONS and WEIGHTS

NET WEIGHT: 2370 LBS. (1075,0 KG.)
SHIPPING WEIGHT: 2600 LBS. (1179,3 KG.)
EXPORT CRATE: 104 CU. FT. (2,9 CU. M.)



**MULTI-SPEED
CURVE
PERFORMANCE
BASED ON
WATER**



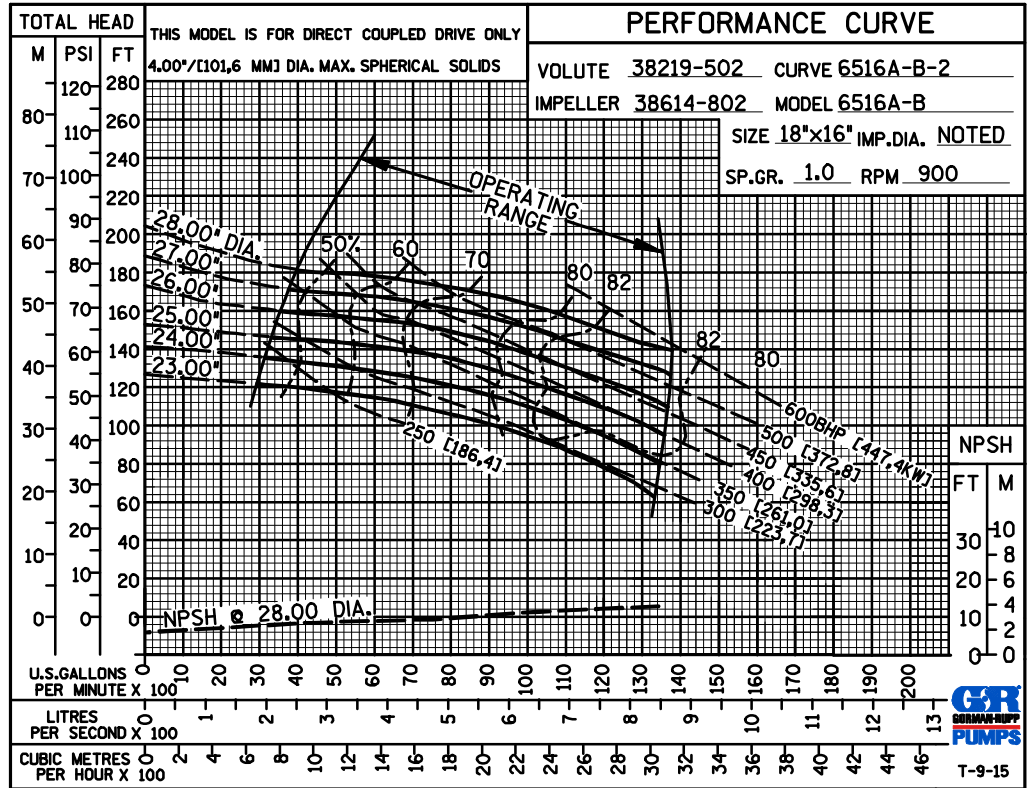
GORMAN-RUPP PUMPS

www.grpumps.com

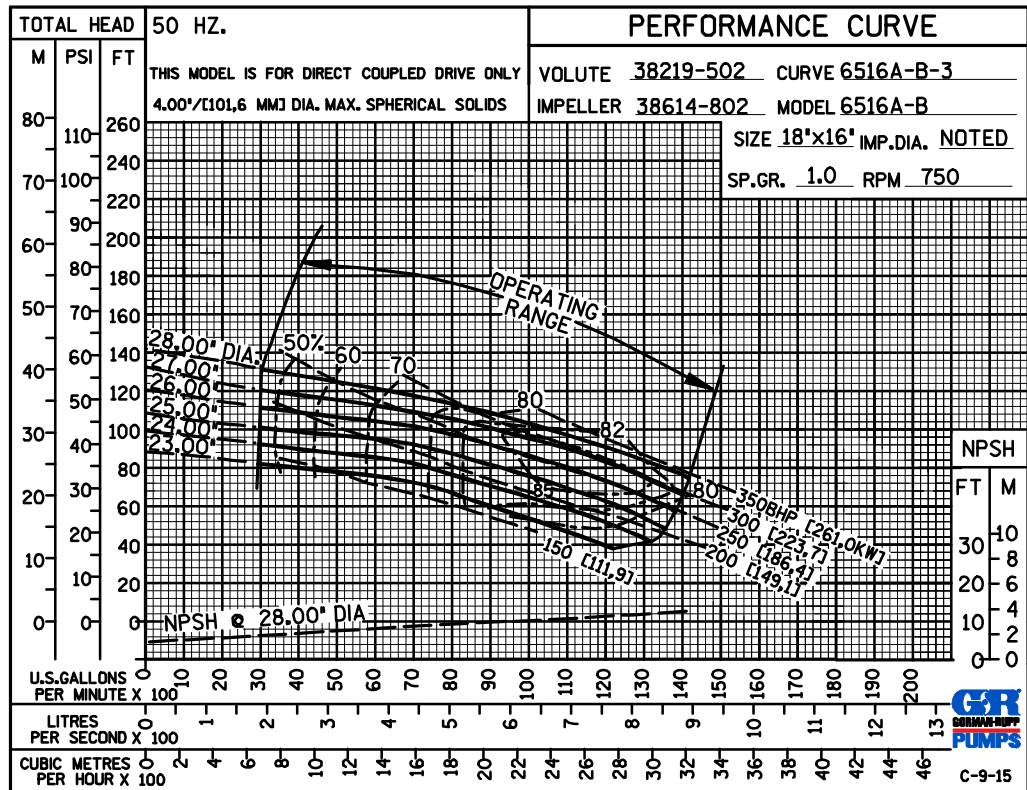
Specifications Subject to Change Without Notice

Printed in U.S.A.

60 HERTZ
PERFORMANCE
BASED ON
WATER
TRIMMED
IMPELLER



50 HERTZ
PERFORMANCE
BASED ON
WATER
TRIMMED
IMPELLER



GORMAN-RUPP PUMPS

www.grpumps.com

Specifications Subject to Change Without Notice

Printed in U.S.A.