

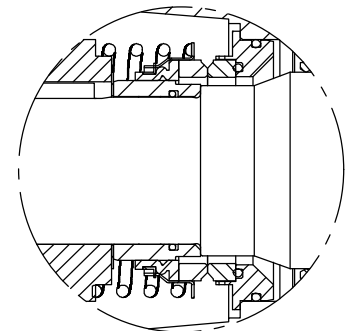
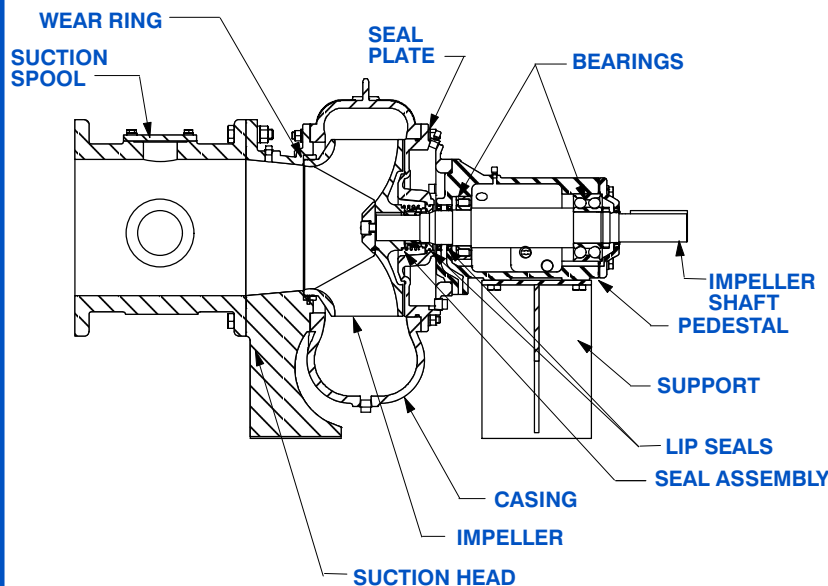
## Ductile Iron Basic Pedestal

**Standard Centrifugal Pump****Model 6512A31-B****Size 12" x 12"****PUMP SPECIFICATIONS****Size:** 12" x 12" (304,8 mm x 304,8 mm) Flanged.**Casing:** Ductile Iron 65-45-12.

Maximum Operating Pressure 68 psi (469 kPa)

**Semi-Open Type, Two Vane Impeller:** Ductile Iron 65-45-12.

Handles 3" (76,2 mm) Diameter Spherical Solids.

**Suction Head:** Ductile Iron 65-45-12.**Suction Spool:** Ductile Iron 65-45-12.**Impeller Shaft:** Alloy Steel 4150.**Pedestal:** Gray Iron 30.**Seal Plate:** Ductile Iron 65-45-12.**Radial Bearing:** Open Single Row Roller.**Thrust Bearing:** Open Double Row Ball.**Bearing and Seal Cavity Lubrication:** SAE 30 Non-Detergent Oil.**Gaskets:** Vegetable Fiber, Red Rubber and Buna-N.**O-Rings:** Buna-N.**Hardware:** Standard Plated Steel.**Bearing and Seal Cavity Oil Level Sight Gauges.***\*Consult Factory for Applications Exceeding Maximum Pressure and/or Temperature Indicated.***SEAL DETAIL**

Mechanical, Oil-Lubricated. Silicon Carbide Rotating Face and Stationary Seat. Fluorocarbon Elastomers (DuPont Viton<sup>®</sup> or Equivalent). Stainless Steel 316 Cage and Stainless Steel 18-8 Spring. Maximum Temperature of Liquid Pumped 160° F (71° C).\*

**GORMAN-RUPP PUMPS**

www.grpumps.com

Specifications Subject to Change Without Notice

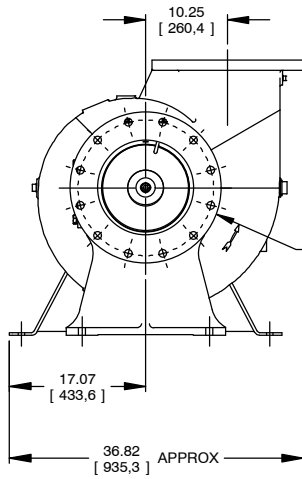
Printed in U.S.A.

**Specification Data**

SECTION 65, PAGE 601

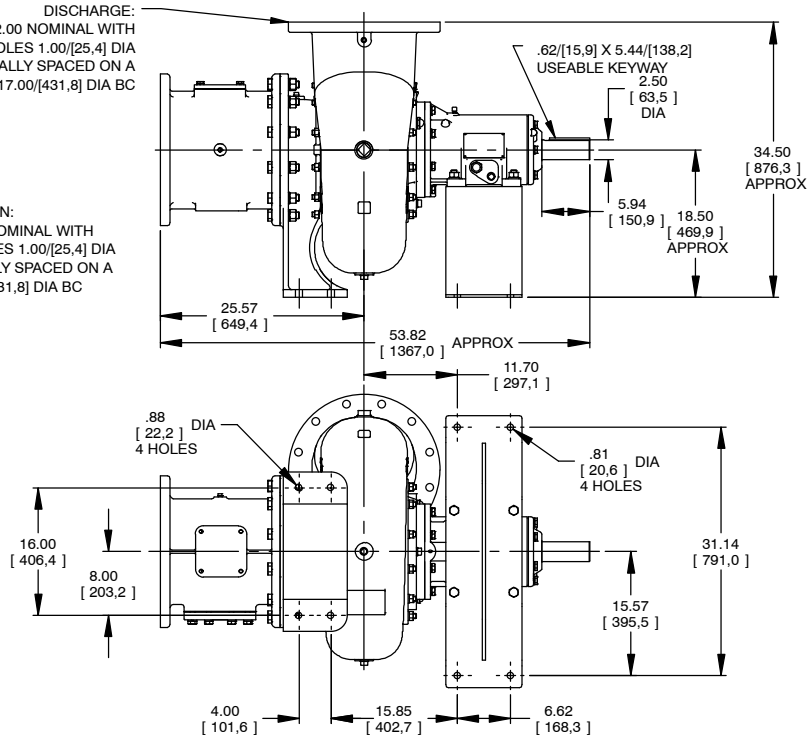
APPROXIMATE DIMENSIONS and WEIGHTS

NET WEIGHT: 1256 LBS. (569,7 KG.)  
 SHIPPING WEIGHT: 1410 LBS. (639,6KG.)  
 EXPORT CRATE: 53.4 CU. FT. (1,5 CU. M.)

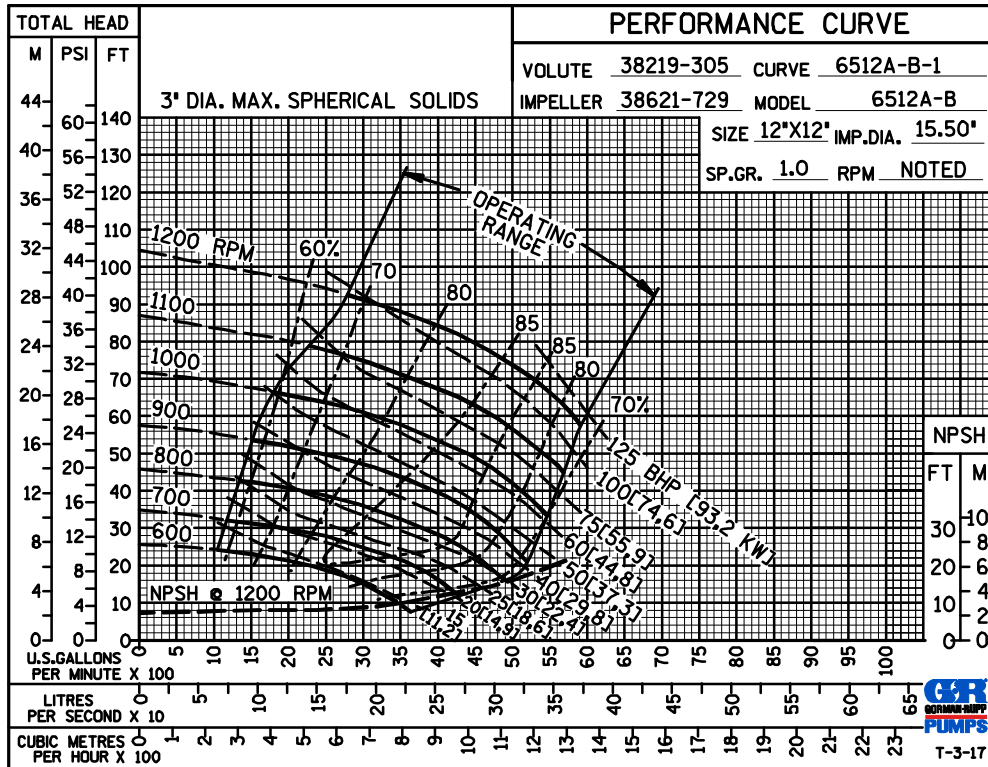


DISCHARGE:  
 12.00 NOMINAL WITH  
 12 HOLES 1.00/[25,4] DIA  
 EQUALLY SPACED ON A  
 17.00/[431,8] DIA BC

SUCTION:  
 12.00 NOMINAL WITH  
 12 HOLES 1.00/[25,4] DIA  
 EQUALLY SPACED ON A  
 17.00/[431,8] DIA BC



**MULTI-SPEED  
 CURVE  
 PERFORMANCE  
 BASED ON  
 WATER**



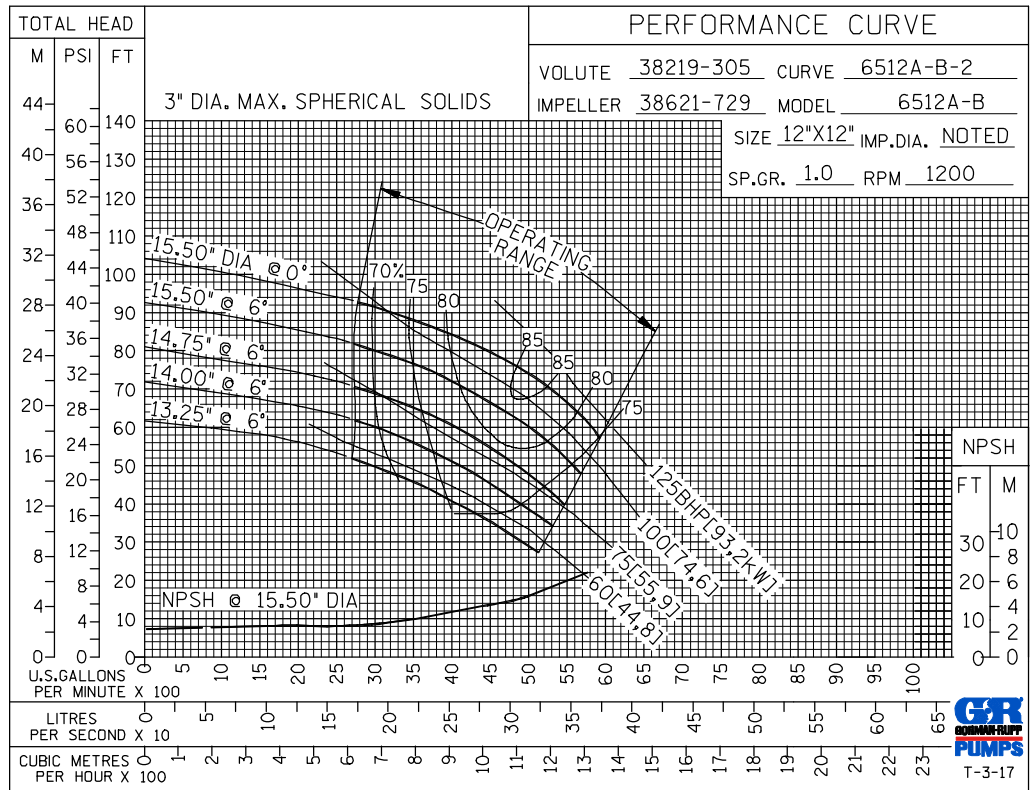
**GORMAN-RUPP PUMPS**

www.grpumps.com

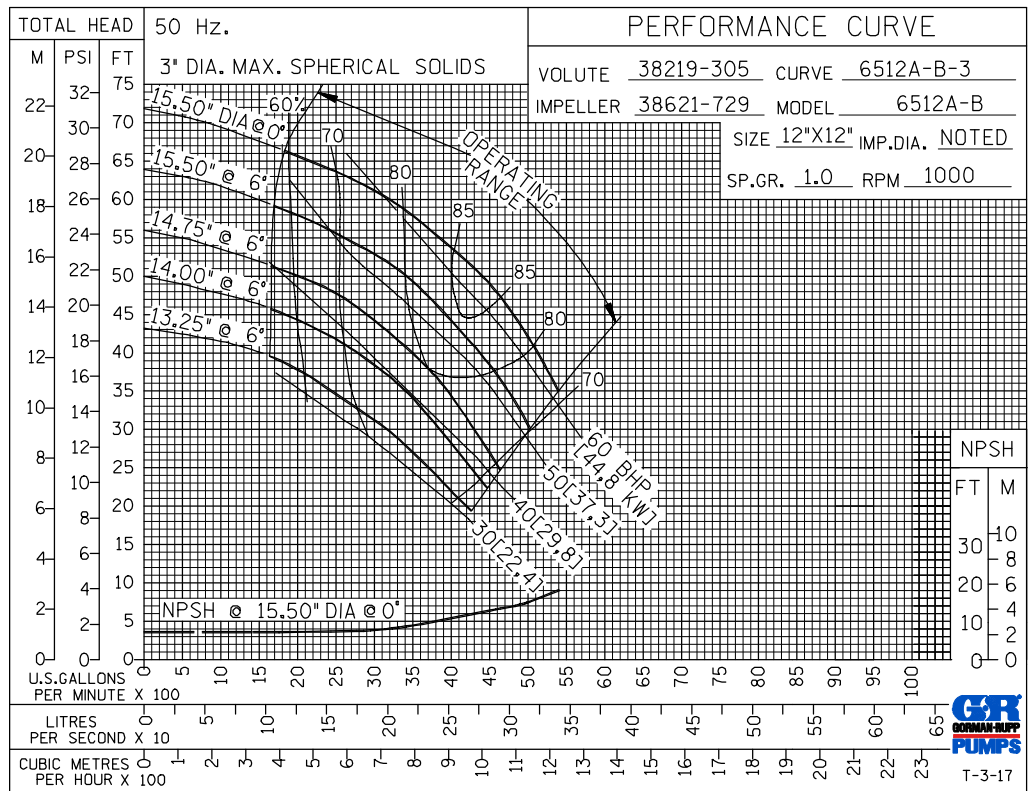
Specifications Subject to Change Without Notice

Printed in U.S.A.

**60 HERTZ  
PERFORMANCE  
BASED ON  
WATER  
TRIMMED  
IMPELLER**



**50 HERTZ  
PERFORMANCE  
BASED ON  
WATER  
TRIMMED  
IMPELLER**



**GORMAN-RUPP PUMPS**

www.grpumps.com

Specifications Subject to Change Without Notice

Printed in U.S.A.