

# Standard Centrifugal Pump



## Model 6506E31-B

### Size 8" x 6"

#### PUMP SPECIFICATIONS

**Size:** 8" x 6" (203 mm x 152 mm) Flanged.

**Casing:** Ductile Iron 65-45-12.

Maximum Casing Pressure 276 psi (1903 kPa).\*

Maximum Operating Pressure 250 psi (1724 kPa) at Temperatures up to 100° F (37° C) Based on System Component Limitations.\*

**Enclosed Type, Five Vane Impeller:** Ductile Iron 80-55-06.

Handles 1 1/4" (31,8 mm) Diameter Spherical Solids.

**Suction Head:** Ductile Iron 65-45-12.

**Suction Spool:** Ductile Iron 65-45-12.

**Impeller Shaft:** Alloy Steel 4150.

**Replaceable Wear Ring:** Ductile Iron 65-45-12.

**Pedestal:** Gray Iron 30.

**Seal Plate:** Ductile Iron 65-45-12.

**Shaft Sleeve:** Stainless Steel 303/304.

**Radial Bearing:** Open Single Row Roller.

**Thrust Bearing:** Open Double Row Ball.

**Bearing and Seal Cavity Lubrication:** SAE 30 Non-Detergent Oil.

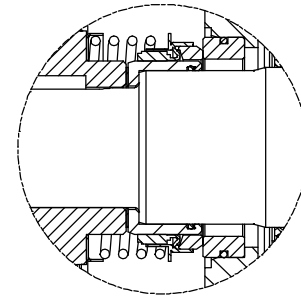
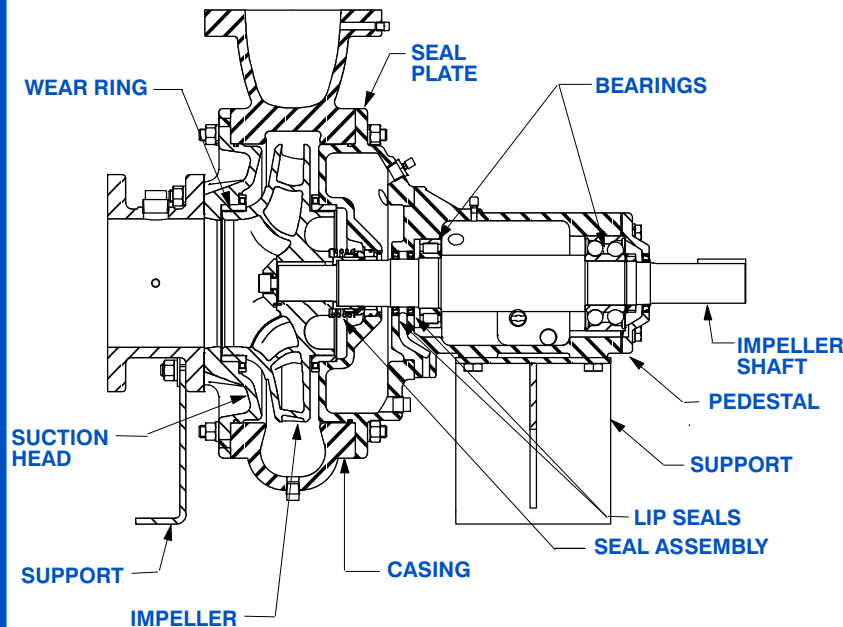
**Gaskets:** Fluorocarbon (DuPont Viton® or Equivalent), Red Rubber and Buna-N.

**O-Rings:** Buna-N.

**Hardware:** Standard Plated Steel.

**Bearing and Seal Cavity Oil Level Sight Gauges.**

*\*Consult Factory for Applications Exceeding Maximum Pressure and/or Temperature Indicated.*



#### SEAL DETAIL

Mechanical, Oil-Lubricated. Silicon Carbide Rotating Face and Stationary Seat. Fluorocarbon Elastomers (DuPont Viton® or Equivalent). Stainless Steel 316 Cage and Stainless Steel 18-8 Spring. Maximum Temperature of Liquid Pumped 160° F (71° C).\*



### GORMAN-RUPP PUMPS

www.grpumps.com

Specifications Subject to Change Without Notice

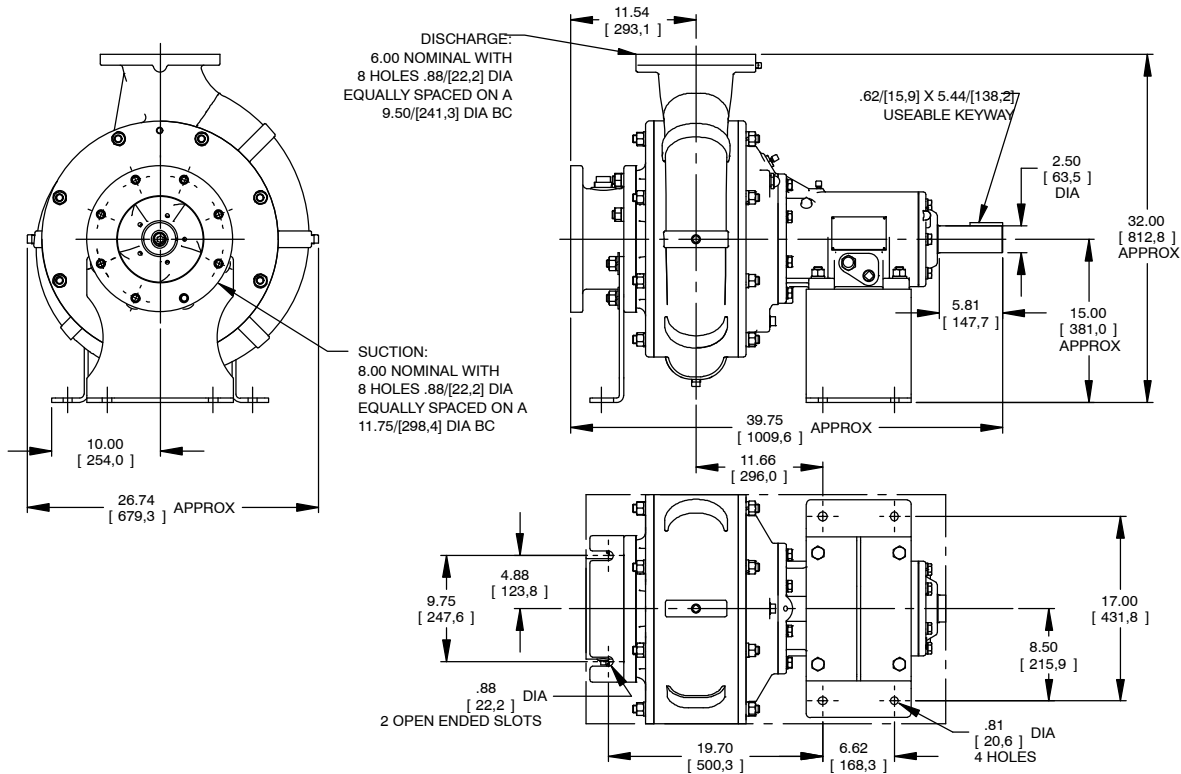
Printed in U.S.A.

**Specification Data**

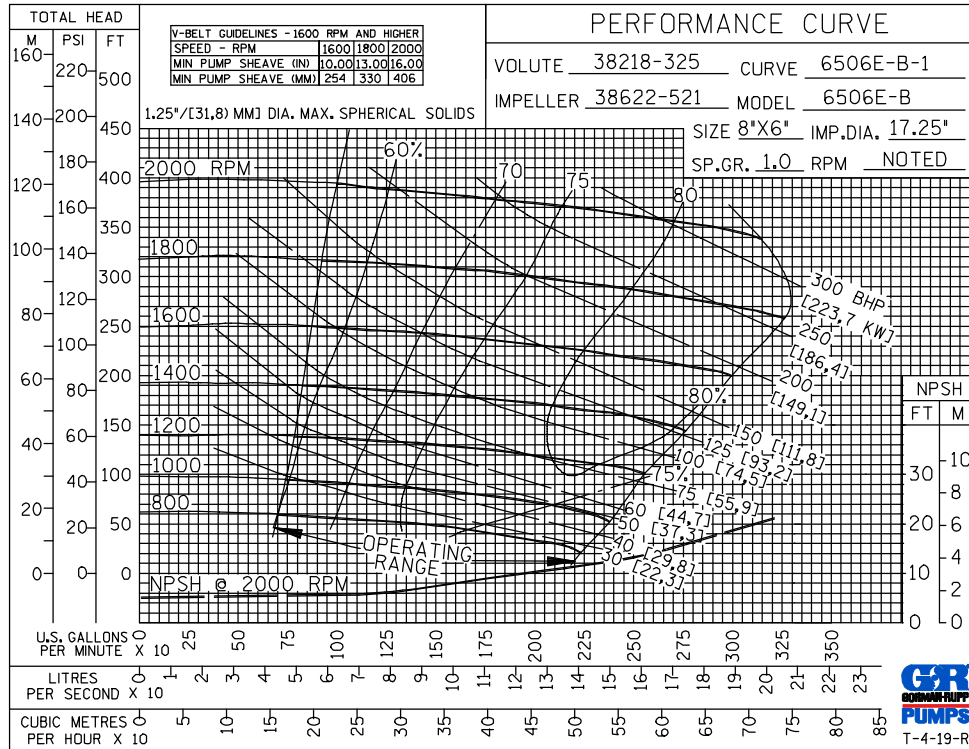
SECTION 65, PAGE 321

APPROXIMATE  
DIMENSIONS and WEIGHTS

**NET WEIGHT: 1020 LBS. (462,7 KG.)**  
**SHIPPING WEIGHT: 1150 LBS. (521,6 KG.)**  
**EXPORT CRATE: 29.6 CU. FT. (0,8 CU. M.)**



**MULTI-SPEED  
CURVE  
PERFORMANCE  
BASED ON  
WATER**



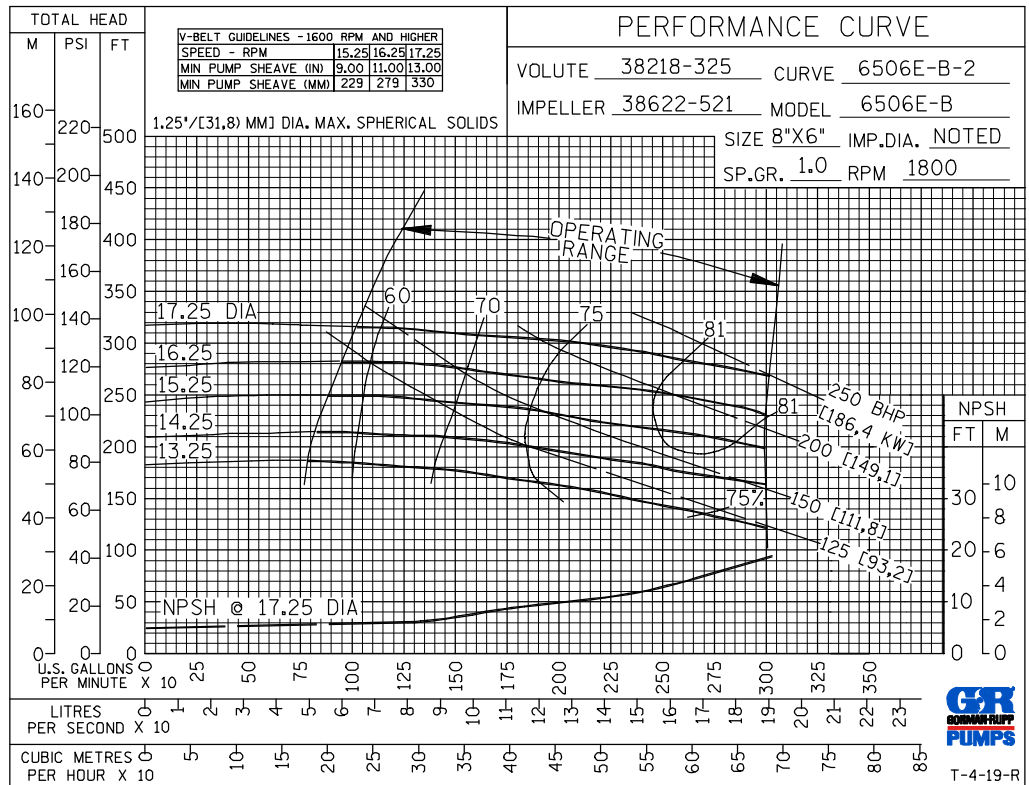
**GORMAN-RUPP PUMPS**

www.grpumps.com

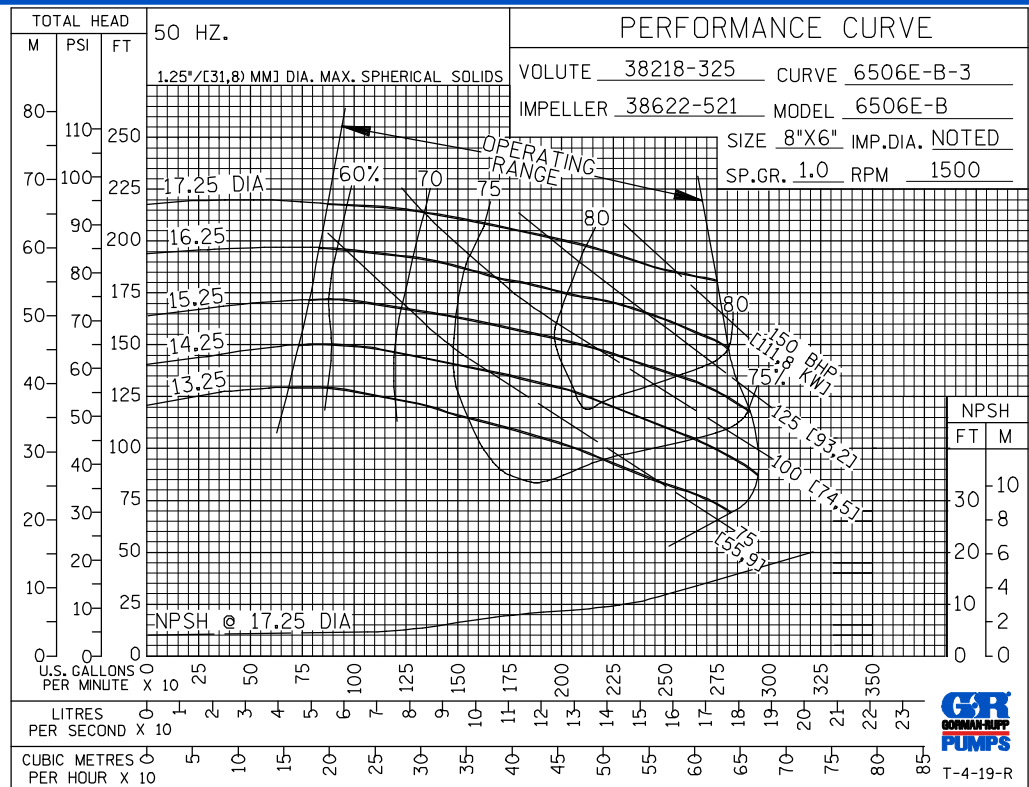
Specifications Subject to Change Without Notice

Printed in U.S.A.

**60 HERTZ  
PERFORMANCE  
BASED ON  
WATER  
TRIMMED  
IMPELLER**



**50 HERTZ  
PERFORMANCE  
BASED ON  
WATER  
TRIMMED  
IMPELLER**

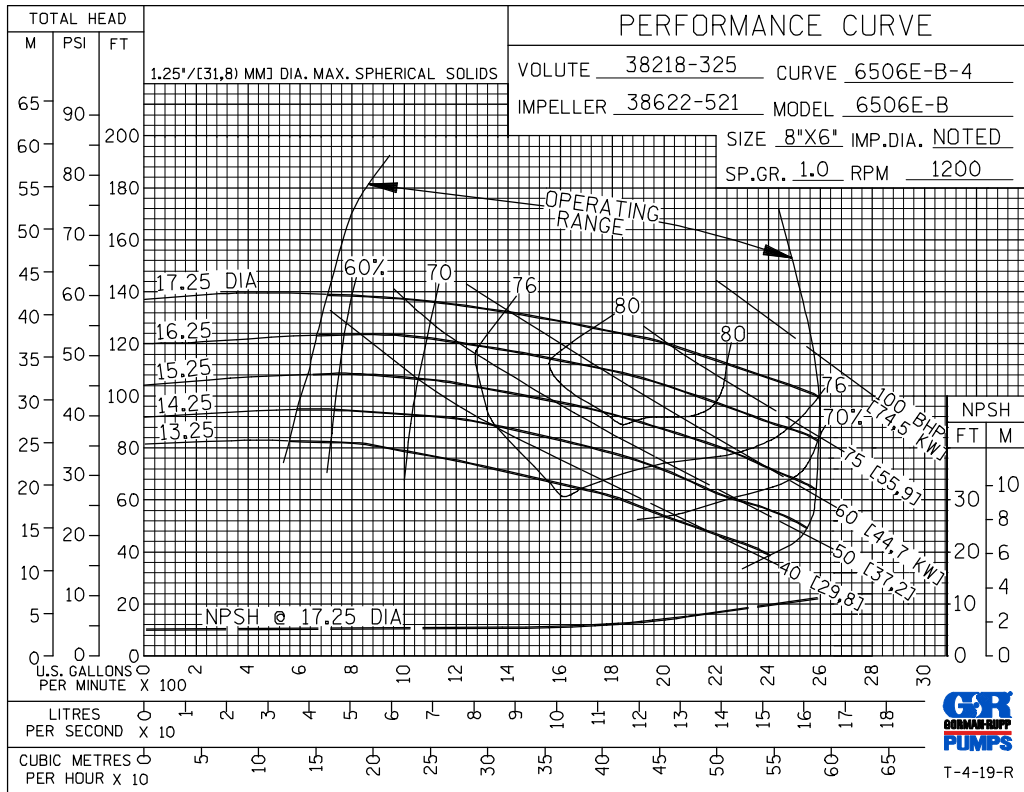


**GORMAN-RUPP PUMPS**

www.grpumps.com

Specifications Subject to Change Without Notice

Printed in U.S.A.



**60 HERTZ  
 PERFORMANCE  
 BASED ON  
 WATER  
 TRIMMED  
 IMPELLER**



GORMAN-RUPP PUMPS

www.grpumps.com

Specifications Subject to Change Without Notice

Printed in U.S.A.