

Ductile Iron Basic Pedestal

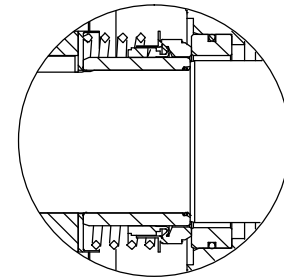
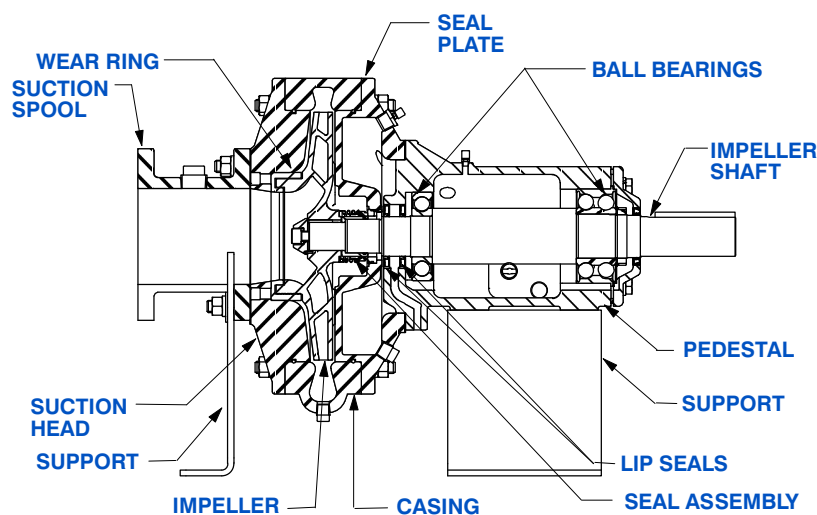
Standard Centrifugal Pump**Model 6503A31-B****Size 6" x 3"****PUMP SPECIFICATIONS****Size:** 6" x 3" (152 mm x 76 mm) Flanged.**Casing:** Ductile Iron 65-45-12.

Maximum Casing Pressure 311 psi (2144 kPa).*

Maximum Operating Pressure 250 psi (1723 kPa) at Temperatures up to 100 F (37 C) Based on System Component Limitations.*

Enclosed Type, Five Vane Impeller: Ductile Iron 65-45-12.

Handles 1/2" (12,7 mm) Diameter Spherical Solids.

Suction Head: Ductile Iron 65-45-12.**Suction Spool:** Ductile Iron 65-45-12.**Impeller Shaft:** Alloy Steel 4150.**Replaceable Wear Ring:** Ductile Iron 65-45-12.**Pedestal:** Gray Iron 30.**Seal Plate:** Ductile Iron 65-45-12.**Shaft Sleeve:** Stainless Steel 303/304.**Radial Bearing:** Open Single Row Ball.**Thrust Bearing:** Open Double Row Ball.**Bearing and Seal Cavity Lubrication:** SAE 30 Non-Detergent Oil.**Gaskets:** Red Rubber and Buna-N.**O-Rings:** Buna-N.**Hardware:** Standard Plated Steel.**Bearing and Seal Cavity Oil Level Sight Gauges.****Consult Factory for Applications Exceeding Maximum Pressure and/or Temperature Indicated.***SEAL DETAIL**

Mechanical, Oil-Lubricated. Silicon Carbide Rotating Face and Stationary Seat. Fluorocarbon Elastomers (DuPont Viton® or Equivalent). Stainless Steel 316 Cage and Spring. Maximum Temperature of Liquid Pumped 160°F (71°C).*

**GORMAN-RUPP PUMPS**

www.grpumps.com

Specifications Subject to Change Without Notice

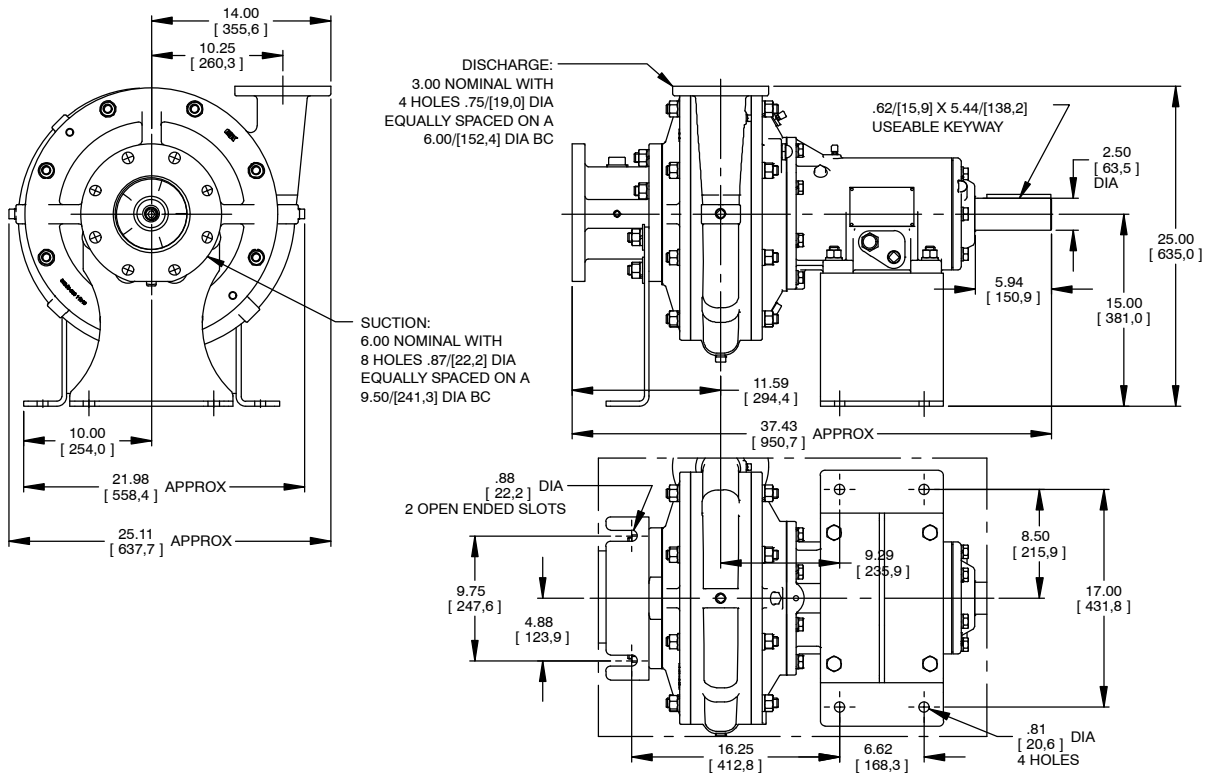
Printed in U.S.A.

Specification Data

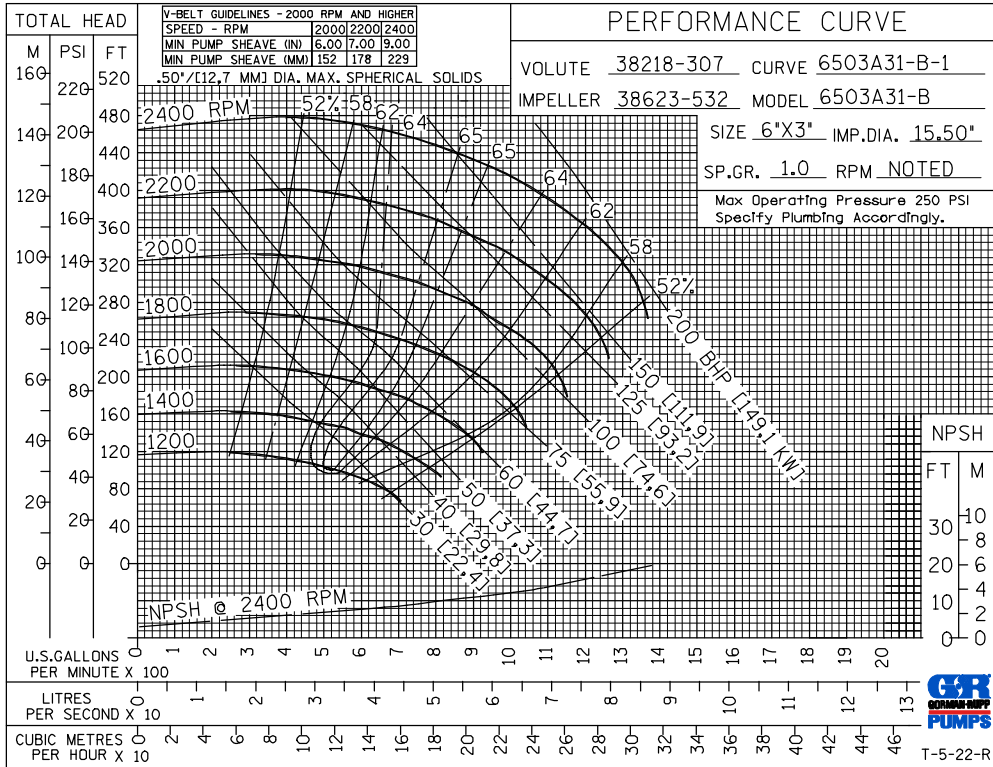
SECTION 65, PAGE 101

APPROXIMATE
DIMENSIONS and WEIGHTS

NET WEIGHT: 658 LBS. (298,5 KG.)
SHIPPING WEIGHT: 758 LBS. (343,8 KG.)
EXPORT CRATE: 24.3 CU. FT. (0,7 CU. M.)



**MULTI-SPEED
CURVE
PERFORMANCE
BASED ON
WATER**



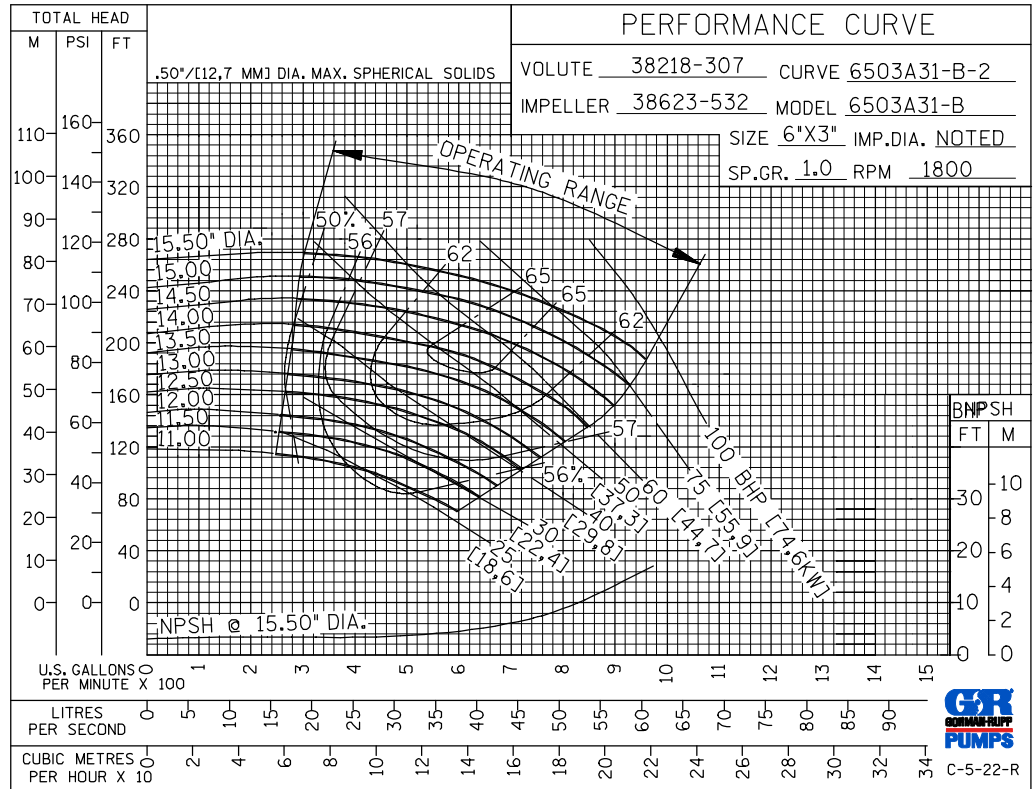
GORMAN-RUPP PUMPS

www.grpumps.com

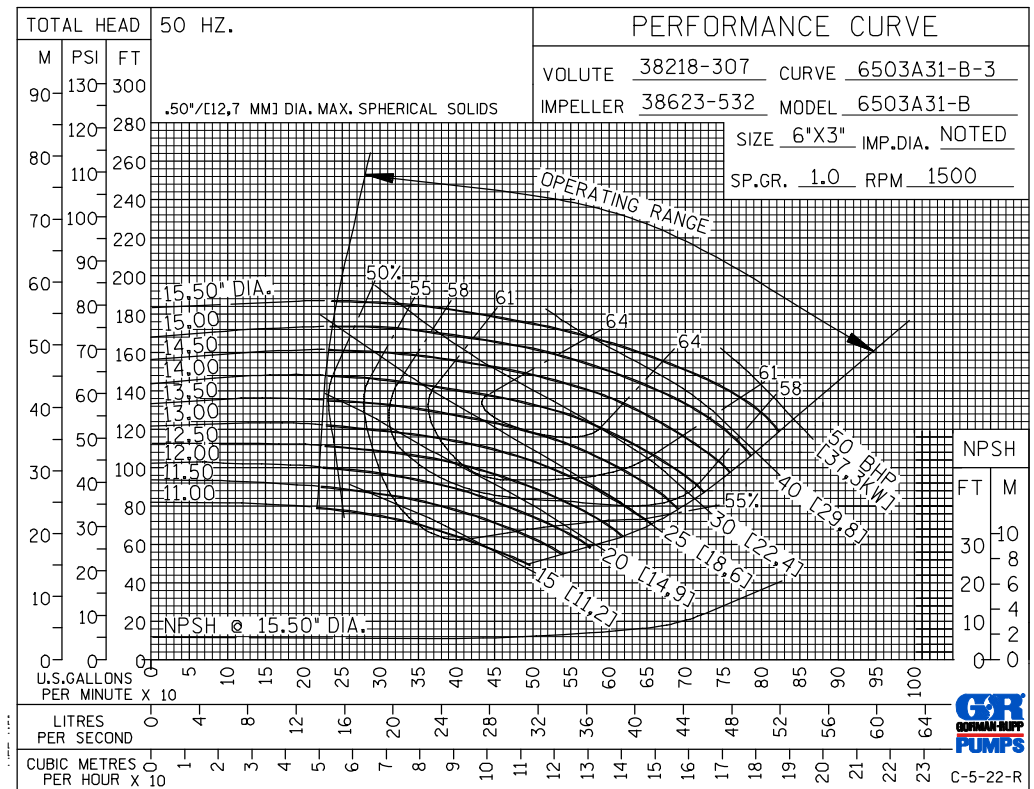
Specifications Subject to Change Without Notice

Printed in U.S.A.

**60 HERTZ
PERFORMANCE
BASED ON
WATER
TRIMMED
IMPELLER**



**50 HERTZ
PERFORMANCE
BASED ON
WATER
TRIMMED
IMPELLER**



GORMAN-RUPP PUMPS

www.grpumps.com

Specifications Subject to Change Without Notice

Printed in U.S.A.