

Standard Centrifugal Pump

Model 6406D60-B

Size 8" x 6"



PUMP SPECIFICATIONS

Size: 8" x 6" (203,2 mm x 152,4 mm) Flanged.

Casing: Ductile Iron 65-45-12.

Maximum Operating Pressure 92 psi (634 kPa).*

Impeller: Ductile Iron 65-45-12.

Handles 1.50" (38,1 mm) Diameter Spherical Solids.

Impeller Shaft: Alloy Steel 4150.

Replaceable Wear Plate: Ductile Iron 65-45-12.

Shaft Sleeve: Alloy Steel 4130.

Seal Plate: Ductile Iron 65-45-12.

Bearing Housing: Ductile Iron 65-45-12.

Radial Bearing: Open Single Row Ball.

Thrust Bearing: Open Double Row Ball.

Bearing and Seal Cavity Lubrication: SAE 30 Non-Detergent Oil.

Gaskets: Vegetable Fiber and Cork.

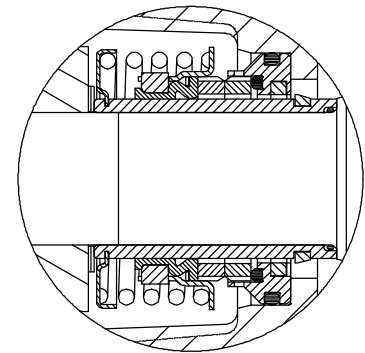
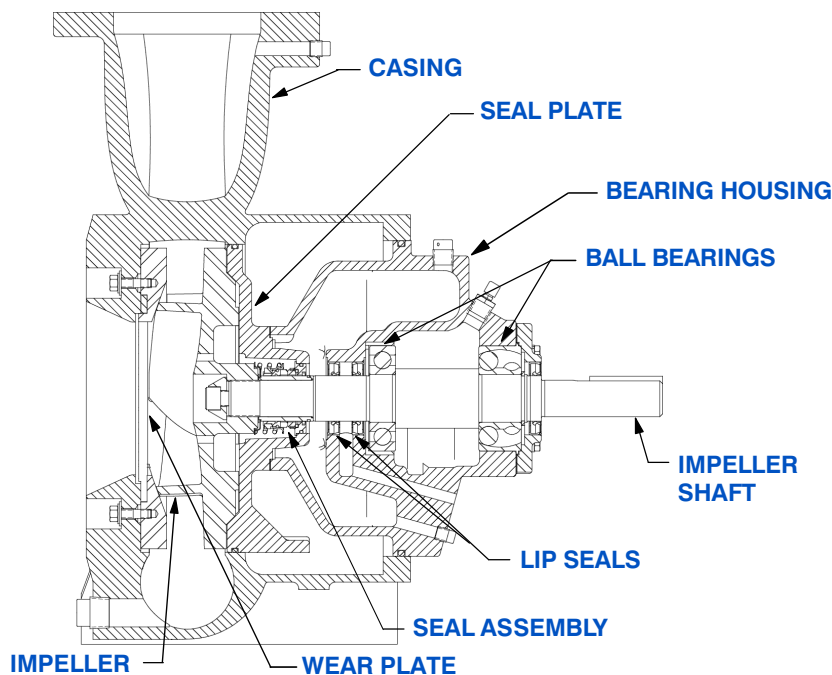
O-Rings: Buna-N and Fluorocarbon FKM, (Viton® or Equivalent).

Hardware: Standard Plated Steel.

Bearing and Seal Cavity Oil Level Sight Gauges.

Optional Equipment: Suction Spool w/Clean-out.

**Consult Factory for Applications Exceeding Maximum Pressure and/or Temperature Indicated.*



SEAL DETAIL

Cartridge Type, Mechanical, Oil-Lubricated, Double Floating, Self-Aligning. Silicon Carbide Rotating and Stationary Faces. Stainless Steel 316 Stationary Seat. Fluorocarbon Elastomers (DuPont Viton® or Equivalent). Stainless Steel 18-8 Cage and Spring. Maximum Temperature of Liquid Pumped, 160°F (71°C).*



GORMAN-RUPP PUMPS

www.grpumps.com

Specifications Subject to Change Without Notice

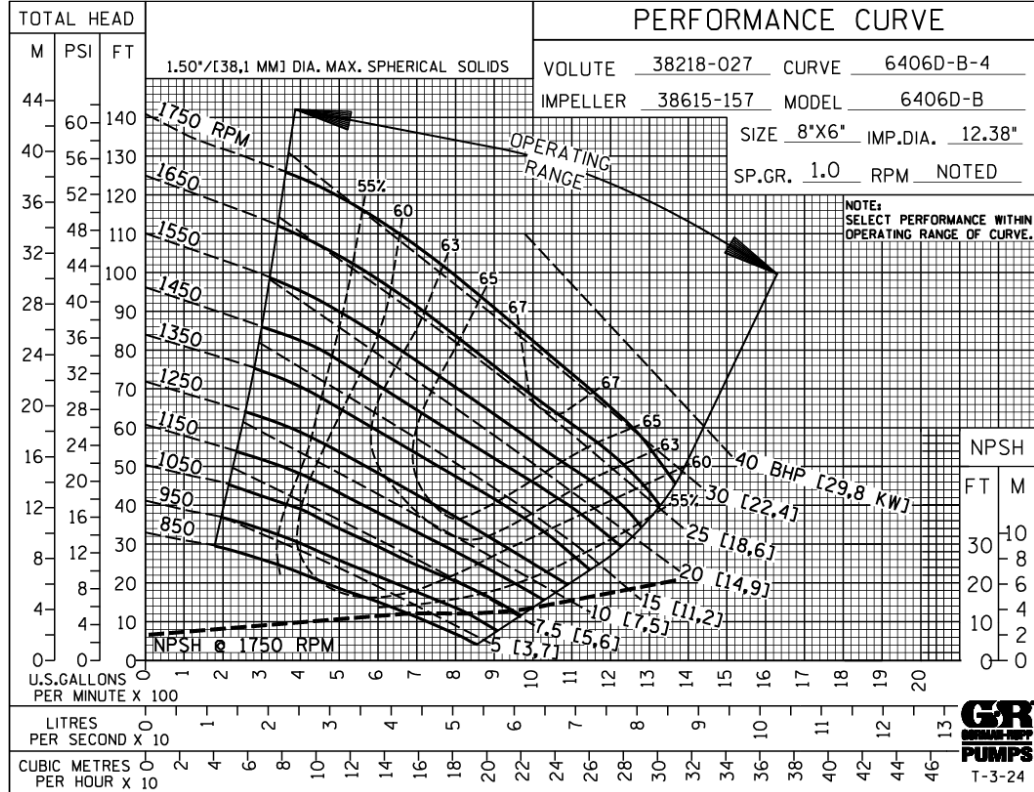
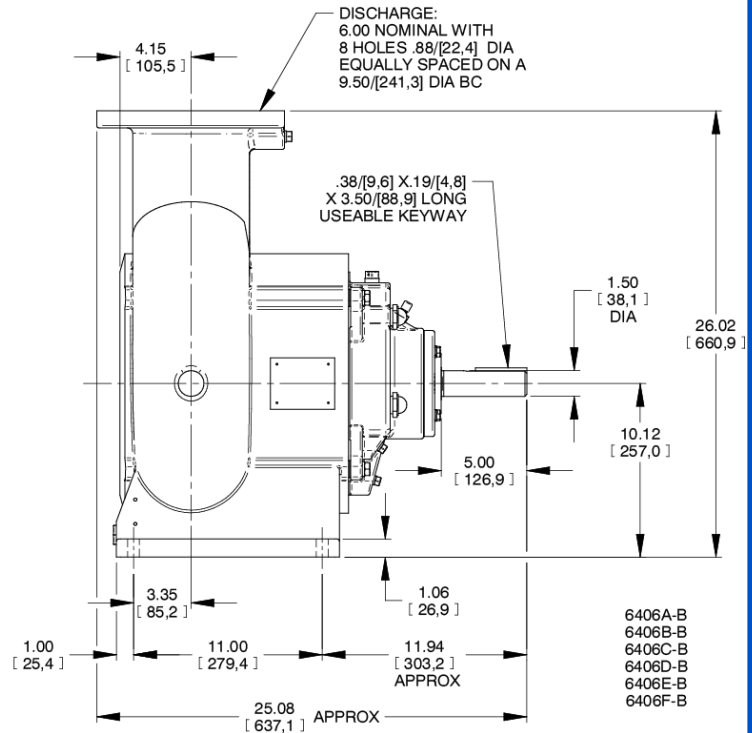
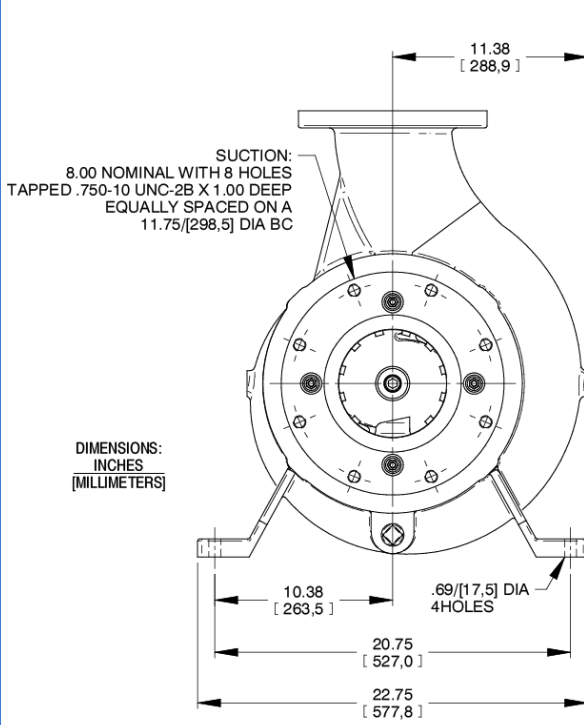
Printed in U.S.A.

Specification Data

SECTION 64, PAGE 630

APPROXIMATE DIMENSIONS and WEIGHTS

NET WEIGHT: 450 LBS. (204 KG.)*
SHIPPING WEIGHT: 550 LBS. (249 KG.)*
EXPORT CRATE: 13.4 CU. FT. (0,38 CU. M.)



GORMAN-RUPP PUMPS

www.grpumps.com

Specifications Subject to Change Without Notice

Printed in U.S.A.