



# Standard Centrifugal Pump

Model 6406C60-B

Size 8" x 6"



## PUMP SPECIFICATIONS

**Size:** 8" x 6" (203,2 mm x 152,4 mm) Flanged.

**Casing:** Ductile Iron 65-45-12.

Maximum Operating Pressure 67 psi (462 kPa).\*

**Impeller:** Ductile Iron 65-45-12.

Handles 3" (76,2 mm) Diameter Spherical Solids.

**Impeller Shaft:** Alloy Steel 4150.

**Replaceable Wear Plate:** Carbon Steel ASTM A36.

**Shaft Sleeve:** Alloy Steel 4130.

**Seal Plate:** Ductile Iron 65-45-12.

**Bearing Housing:** Ductile Iron 65-45-12.

**Radial Bearing:** Open Single Row Ball.

**Thrust Bearing:** Open Double Row Ball.

**Bearing and Seal Cavity Lubrication:** SAE 30 Non-Detergent Oil.

**Gaskets:** Vegetable Fiber and Cork.

**O-Rings:** Buna-N. and Fluorocarbon FKM, (Viton® or Equivalent).

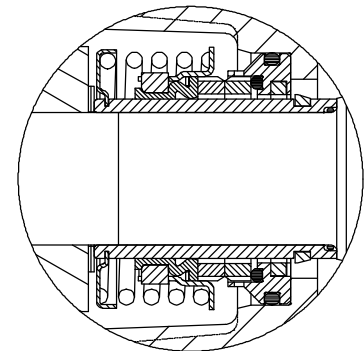
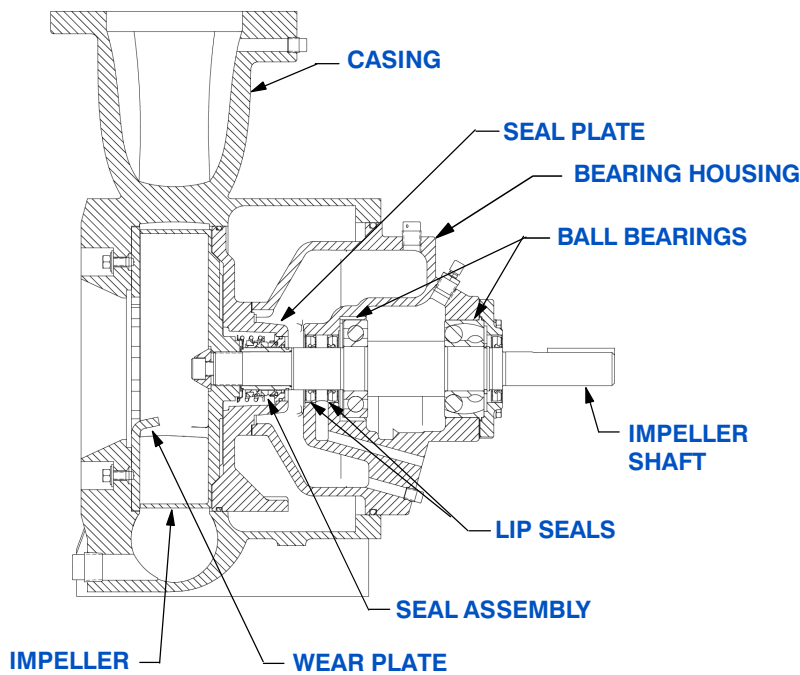
**Hardware:** Standard Plated Steel.

**Bearing and Seal Cavity Oil Level Sight Gauges.**

**Optional Equipment:** Suction Spool w/Clean-out.



*\*Consult Factory for Applications Exceeding Maximum Pressure and/or Temperature Indicated.*



### SEAL DETAIL

Cartridge Type, Mechanical, Oil-Lubricated, Double Floating, Self-Aligning. Silicon Carbide Rotating and Stationary Faces. Stainless Steel 316 Stationary Seat. Fluorocarbon Elastomers (DuPont Viton® or Equivalent). Stainless Steel 18-8 Cage and Spring. Maximum Temperature of Liquid Pumped, 160°F (71°C).\*



GORMAN-RUPP PUMPS

www.grpumps.com

Specifications Subject to Change Without Notice

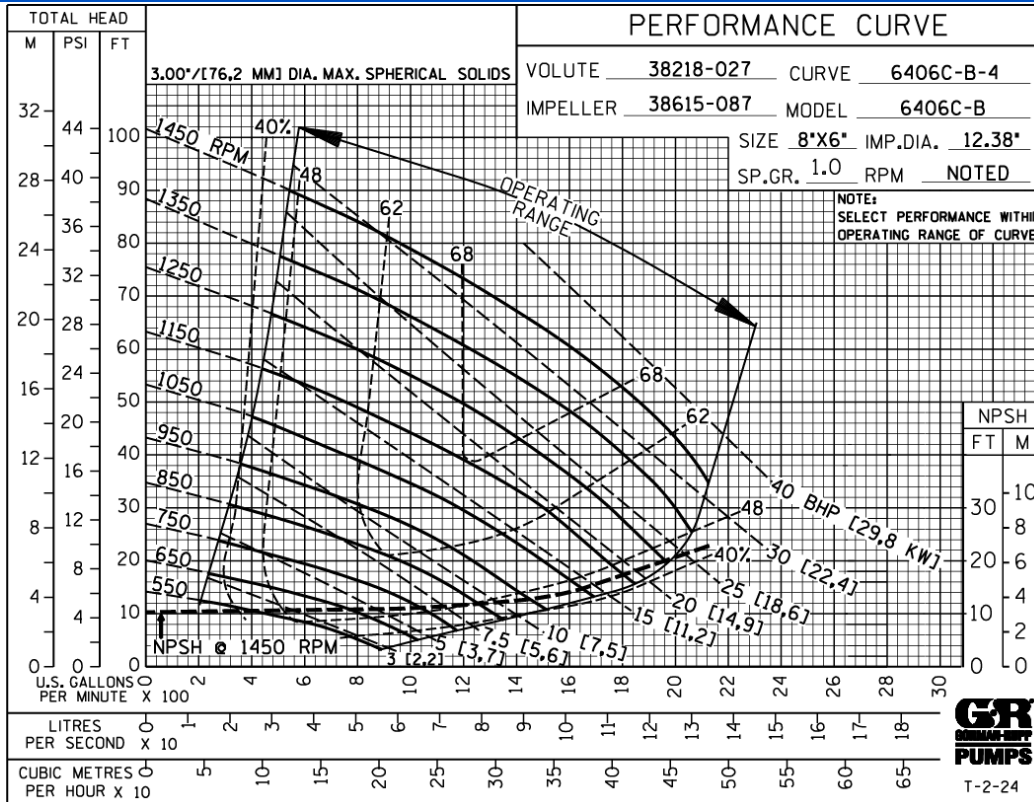
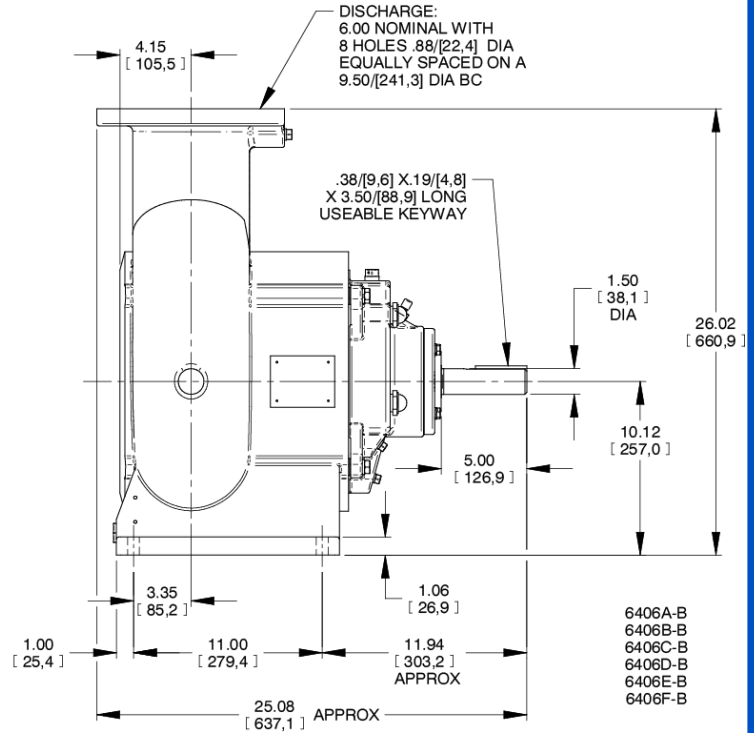
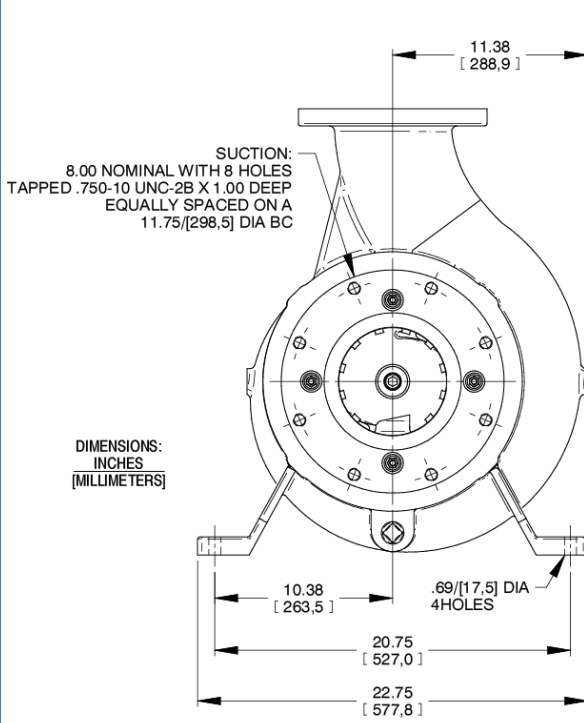
Printed in U.S.A.

**Specification Data**

SECTION 64, PAGE 620

**APPROXIMATE DIMENSIONS and WEIGHTS**

**NET WEIGHT: 450 LBS. ( 204 KG.)\***  
**SHIPPING WEIGHT: 550 LBS. ( 249 KG.)\***  
**EXPORT CRATE: 13.4 CU. FT. (0,38 CU. M.)**



**GORMAN-RUPP PUMPS**

www.grpumps.com

Specifications Subject to Change Without Notice

Printed in U.S.A.