

A C E



Diesel Engine Driven

Standard Centrifugal Pump

Model 64B2-F5L and 64B52-F5L

Size 6" x 4"

Total Head		CAPACITY OF PUMP IN U.S. GALLONS PER MINUTE (GPM) AT CONTINUOUS PERFORMANCE				
PS.I.	Feet	25'	20'	15'	10'	5'
163.4	377	140	140	140	140	140
151.7	350	450	465	465	465	465
130.1	300	460	580	665	665	665
108.4	250	468	598	720	770	770
86.7	200	475	610	733	830	865
65.0	150	483	620	748	840	872
43.4	100	488	630	757	850	883
Suction Lift		25'	20'	15'	10'	5'

PUMP SPECIFICATIONS

Size: 6" x 4" (152,4 mm x 101,6 mm) NPT - Female.

Casing: Gray Iron No. 40.

Maximum Operating Pressure 244 psi (1682 kPa).*

Enclosed Type, Six Vane Impeller: Gray Iron No. 30. Handles 7/16" (11,1 mm) Diameter Spherical Solids.**Impeller Shaft:** Alloy Steel No. 4150.**Replaceable Wear Ring:** (64B2-F5L) Copper Alloy C83600.
(64B52-F5L) Gray Iron No. 30.**Balance Ring:** Copper Alloy C93200.**Suction Head:** Gray Iron No. 30.**Intermediate Bracket:** Gray Iron No. 30.**Seal:** (64B2-F5L)

Double, Grease-Lubricated with Spring-Loaded Grease Cup. Sintered Bronze Stationary Seal Seats. Steel Rotating Faces. Neoprene Packing Rings. Maximum Temperature of Liquid Pumped, 110°F (43°C). Maximum Suction Pressure 10 psi (69 kPa).*

Seal: (64B52-F5L)

Type 43 Mechanical Self-Lubricated. Silicon Carbide Stationary and Rotating Faces. Fluorocarbon Elastomers (DuPont Viton® or Equivalent). Stainless Steel No. 302/304 Cage and Spring. Maximum Temperature of Liquid Pumped, 160°F (71°C).*

Seal Liner: (64B2-F5L) Copper Alloy C26000.**Shaft Sleeve:** (64B52-F5L) Alloy Steel 4130.**Radial Bearing:** Open Double Ball Type.**Bearing Lubrication:** Grease**Gaskets:** Vegetable Fiber**Hardware:** Standard Plated Steel**Standard Equipment:** Hoisting Bail, Skid Base, Strainer, Hand Primer Assembly and Discharge Check Valve Assembly.**Optional Equipment:** Wheel Kit ^{w/}P235/75R15 Pneumatic Tires. Battery. Over-the-Road Trailer (Meets D.O.T. and Transport Canada Requirements) Available ^{w/}either Electric or Hydraulic Surge Brakes, Running Lights, Two Trailer Jack Stands and Safety Chains.

*Consult Factory for Applications Exceeding Maximum Pressure and/or Temperature Indicated.

**ENGINE SPECIFICATIONS****Model:** Deutz F5L.**Type:** Five Cylinder, Four Cycle, Air Cooled Diesel Engine.**Displacement:** 329 Cu. In. (5,4 Liters).**Governor:** Mechanical.**Lubrication:** Forced Circulation.**Air Cleaner:** Oil Bath.**Oil Reservoir:** 15.8 U.S. Qts. (15 liters) Dry.
14.3 U.S. Qts. (13,5 liters) Refill.**Fuel Tank:** 38.9 U.S. Gallons (147.2 liters).**Full Load Operating Time:** 12.1 Hrs.**Starter:** 12V Electric.**Standard Features:** High Oil Temperature, Low Oil Pressure, V-belt, Alternator and Start Failure Safety Shut Down Switches/Indicators. Fuel Level Gauge. Throttle Control. Instrument Panel with: Temperature Gauge, Oil Pressure Gauge, Ammeter, Hourmeter, Tachometer, Start/Stop Key Switch, 15 Amp Fuse. Muffler ^{w/}Guard and Weather Cap.**DEUTZ PUBLISHED PERFORMANCE:**

Maximum Continuous B.H.P. 93.8 (70 kW) @ 2500 RPM



THE GORMAN-RUPP COMPANY • MANSFIELD, OHIO

GORMAN-RUPP OF CANADA LIMITED • ST. THOMAS, ONTARIO, CANADA

www.grpumps.com

Specifications Subject to Change Without Notice

Printed in U.S.A.

Specification Data

SECTION 60, PAGE 985

APPROXIMATE
DIMENSIONS and WEIGHTS

NET WEIGHT:

SKID BASE

2066 LBS. [937 KG.]

2-WHEEL

2411 LBS. [1094 KG.]

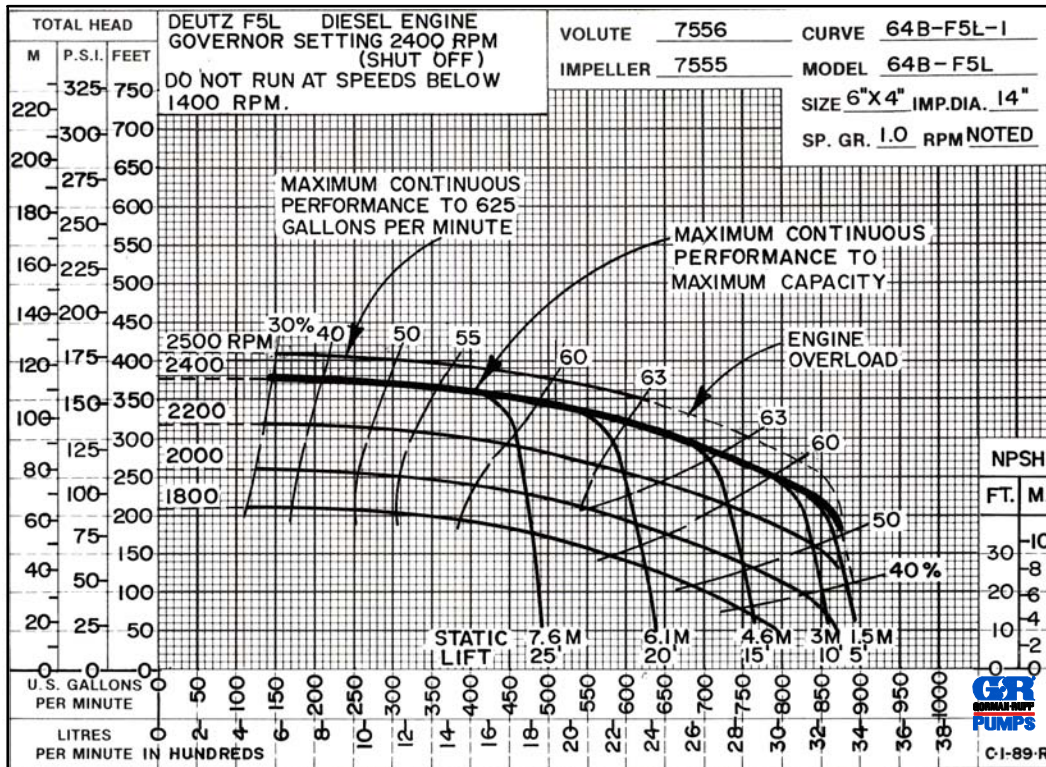
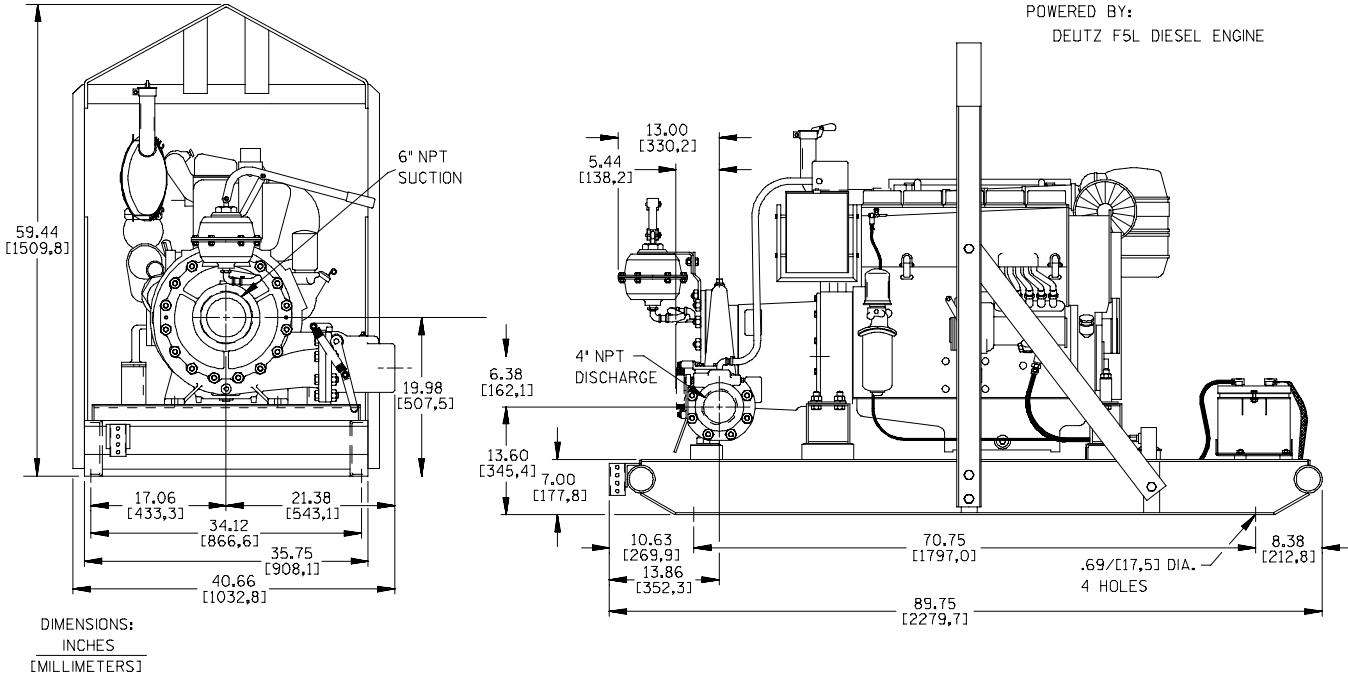
SHIPPING WEIGHTS:

2320 LBS. [1052 KG.]

2411 LBS. [1094 KG.]

CRATE:

180 CU. FT. [5,1 CU. M.]



THE GORMAN-RUPP COMPANY • MANSFIELD, OHIO

GORMAN-RUPP OF CANADA LIMITED • ST. THOMAS, ONTARIO, CANADA

Specifications Subject to Change Without Notice

Printed in U.S.A.