



Diesel Engine Driven
Standard Centrifugal Pump
Model 64B2-F4L
Size 6" x 4"

| Total Head | | CAPACITY OF PUMP IN U.S. GALLONS PER MINUTE (GPM) AT CONTINUOUS PERFORMANCE | | | | |
|---------------------|------|---|------------|------------|------------|-----------|
| P.S.I. | Feet | | | | | |
| 121.4 | 280 | 140 | 140 | 140 | 140 | 140 |
| 119.2 | 275 | 250 | 250 | 250 | 250 | 250 |
| 108.4 | 250 | 384 | 465 | 465 | 465 | 465 |
| 97.5 | 225 | 395 | 535 | 560 | 560 | 560 |
| 86.7 | 200 | 400 | 560 | 635 | 635 | 635 |
| 75.9 | 175 | 400 | 565 | 680 | 700 | 700 |
| 65.0 | 150 | 400 | 570 | 705 | 755 | 755 |
| 54.2 | 125 | 400 | 575 | 710 | 780 | 805 |
| 43.4 | 100 | 400 | 575 | 715 | 795 | 840 |
| Suction lift | | 25' | 20' | 15' | 10' | 5' |



PUMP SPECIFICATIONS

- Size:** 6" x 4" (153 mm x 102 mm) NPT - Female.
- Casing:** Gray Iron No. 30.
- Maximum Operating Pressure** 182 psi (1255 kPa).*
- Enclosed Type, Six Vane Impeller:** Gray Iron No. 30. Handles 7/16" (11,1 mm) Diameter Spherical Solids.
- Impeller Shaft:** Alloy Steel No. 4150.
- Replaceable Wear Ring:** Copper Alloy C83600.
- Balance Ring:** Copper Alloy C93200.
- Suction Head:** Gray Iron No. 30.
- Intermediate Bracket:** Gray Iron No. 30.
- Seal:** Double, Grease-Lubricated with Spring-Loaded Grease Cup. Sintered Bronze Stationary Seal Seats. Steel Rotating Faces. Neoprene Packing Rings. Maximum Temperature of Liquid Pumped, 110°F (43°C) Maximum Suction Pressure 10 psi (69 kPa).*
- Seal Liner:** Copper Alloy C26000.
- Radial Bearing:** Open Double Row Ball.
- Bearing Lubrication:** Grease.
- Gaskets:** Vegetable Fiber.
- Hardware:** Standard Plated Steel.
- Standard Equipment:** Hoisting Bail. Skid Base. Strainer. Hand Primer Assembly. Discharge Check Valve Assembly.
- Optional Equipment:** Wheel Kit ^{w/}P225/75R15 Pneumatic Tires. Battery. Over-the-Road Trailer (Meets D.O.T. and Transport Canada Requirements) Available ^{w/}Either Electric or Hydraulic Surge Brakes, Running Lights, Two Trailer Jack Stands and Safety Chains.

**Consult Factory for Applications Exceeding Maximum Pressure and/or Temperature Indicated.*

WARNING!

Do not use in explosive atmosphere or for pumping volatile flammable liquids.

ENGINE SPECIFICATIONS

- Model:** Deutz F4L.
- Type:** Four Cylinder, Four Cycle, Air Cooled Diesel Engine.
- Displacement:** 263.2 Cu. In. (4,3 liters).
- Governor:** Mechanical.
- Lubrication:** Forced Circulation.
- Air Cleaner:** Oil Bath.
- Oil Reservoir:** 12.7 U.S. Qts. (12 liters) Dry.
13.7 U.S. Qts. (13 liters) Refill.
- Fuel Tank:** 38.9 U.S. Gals. (147,2 liters).
- Full Load Operating Time:** 12.6 Hrs.
- Starter:** 12V Electric.
- Standard Features:** High Oil Temperature, Low Oil Pressure, V-belt, Alternator And Start Failure Safety Shut Down Switches/Indicators. Fuel Level Gauge. Throttle Control. Instrument Panel with: Temperature Gauge, Oil Pressure Gauge, Ammeter, Hourmeter, Tachometer, Start/Stop Key Switch, 15 Amp Fuse. Muffler ^{w/}Guard and Weather Cap.

DEUTZ PUBLISHED PERFORMANCE:
Maximum Continuous B.H.P. 68 (50 kW) @ 2300 RPM



THE GORMAN-RUPP COMPANY • MANSFIELD, OHIO
GORMAN-RUPP OF CANADA LIMITED • ST. THOMAS, ONTARIO, CANADA

www.grpumps.com
Specifications Subject to Change Without Notice

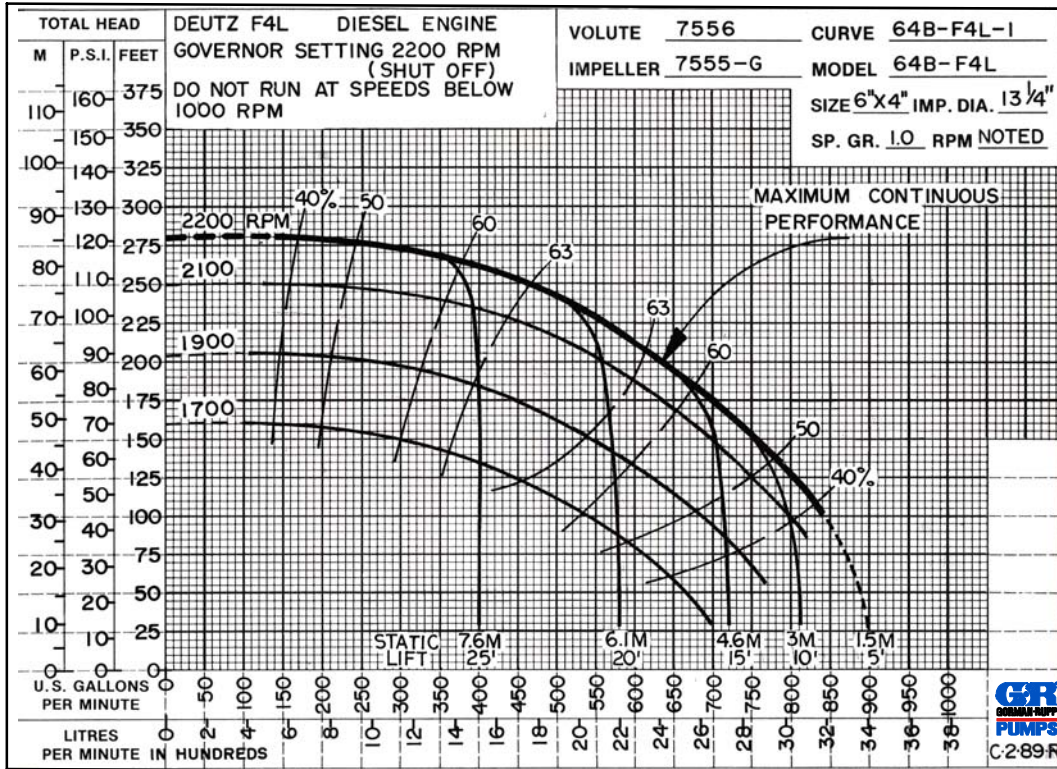
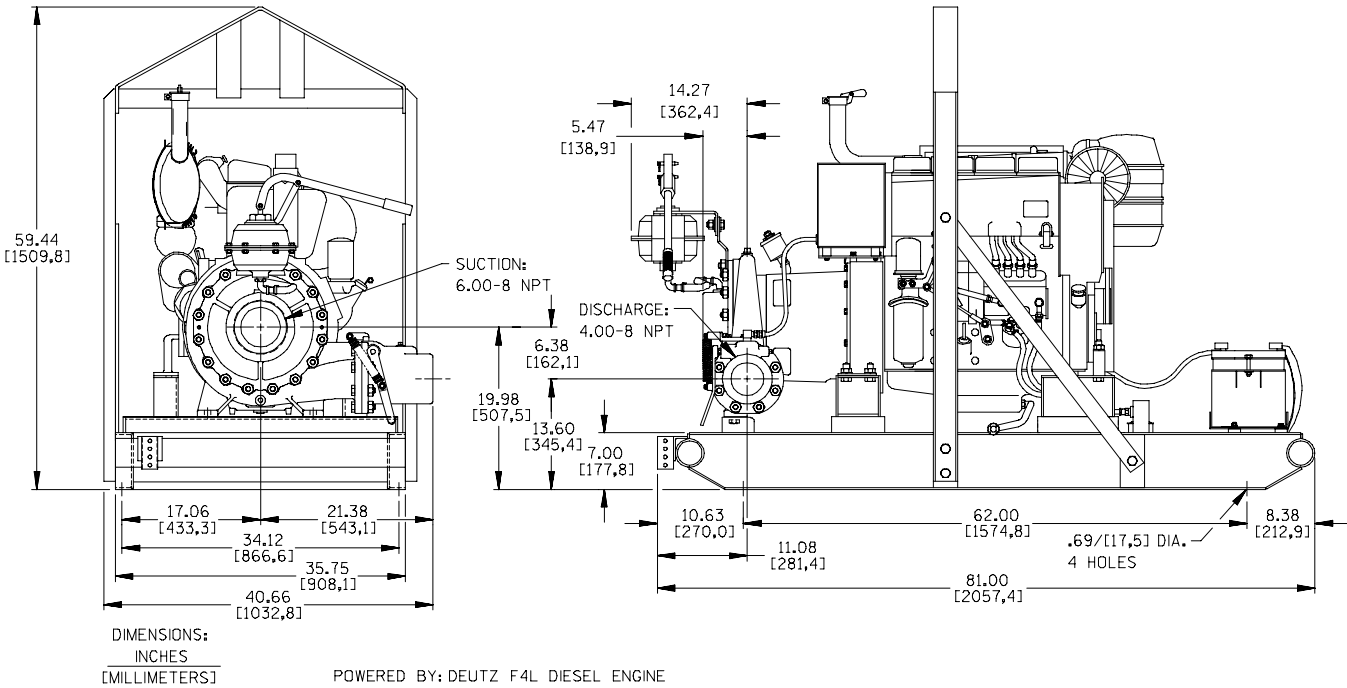
Printed in U.S.A.

Specification Data

SECTION 60, PAGE 980

APPROXIMATE
DIMENSIONS and WEIGHTS

| | | |
|--------------------------|----------------------------|-----------------------|
| | SKID BASE | 2-WHEEL |
| NET WEIGHT: | 1865 LBS. (845,9 KG.) | 2164 LBS. (981,6 KG.) |
| SHIPPING WEIGHTS: | 1985 LBS. (900,3 KG.) | 2164 LBS. (981,6 KG.) |
| EXPORT CRATE: | 165.2 CU. FT. (4.7 CU. M.) | |



THE GORMAN-RUPP COMPANY • MANSFIELD, OHIO

GORMAN-RUPP OF CANADA LIMITED • ST. THOMAS, ONTARIO, CANADA

Specifications Subject to Change Without Notice

Printed in U.S.A.