

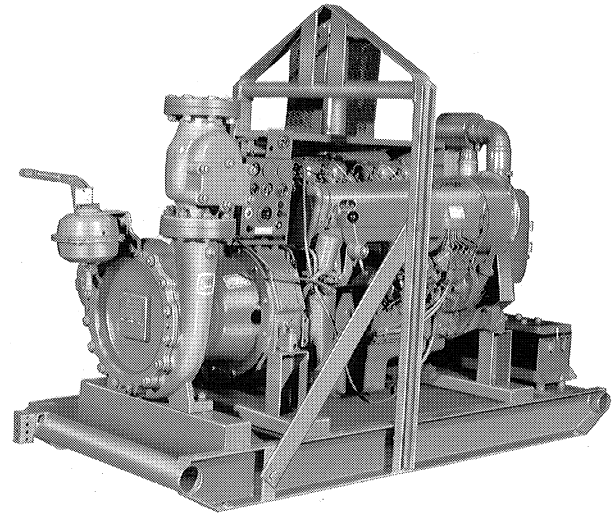
ACE

Standard Centrifugal Pump

Diesel Engine Driven
Model 54J20-BF6L
Size 5" x 4"



Total Head		CAPACITY OF PUMP IN U.S. GALLONS PER MINUTE AT CONTINUOUS PERFORMANCE				
P.S.I.	Feet					
196	456	315	315	315	315	315
174	400	370	522	672	732	855
130	300	437	620	725	730	918
86	200	480	650	762	818	940
45	100	512	670	790	850	958
Suction lift		25'	20'	15'	10'	5'



PUMP SPECIFICATIONS

Size: 5" [127,0 mm] x 4" [101,6 mm] N.P.T.-Female
 Casing: Gray Iron No. 30
 (Maximum Operating Pressure 295 psi. [2034 kPa])
 Impeller: Enclosed Type, Six Vanes, Gray Iron No. 30
 (Handles 1/2" [12,7 mm] Dia. Spherical Solids)
 Impeller Shaft: Alloy Steel No. 4140
 Wear Ring; Replaceable: Gray Iron No. 30
 Cover Plate; Removable: Gray Iron No. 30 (69 lbs. 31.3 kg.)
 Intermediate Bracket: Gray Iron No. 30
 Seal Housing: Gray Iron No. 30
 Seal: Mechanical Oil-Lubricated Double Floating Self-Aligning.
 Rotating an Stationary Faces are Tungsten Titanium Carbide.
 Seat is Stainless Steel No. 316. Elastomers are Viton. Cage and Spring are Stainless Steel No. 18-8. Maximum Temperature of Liquid Pumped, 160°F [71°C]*.
 * Consult factory for applications with liquids in excess of temperature indicated.
 Seal Guard: Stainless Steel No. 304
 Flap Valve: Neoprene and Gray Iron No. 30
 Thrust Bearing: Double Ball Type
 Bearing Lubrication: Grease
 Gaskets: Vegetable Fiber
 Hardware-Internal Wetted: Stainless Steel No. 304;
 Commercially Available Brass
 Hardware-External: Standard Plated Steel
Standard Equipment:
 Hoisting Bail
 Skid Base
 Strainer
 Hand Primer Assy.
 Discharge Check Valve
Optional Equipment:
 2 Wheel Truck Assy with Pneumatic Tires, P235/75R15
 Battery
 Over the Road Trailer (Meets D.O.T. Requirements)

ENGINE SPECIFICATIONS

Model: Deutz BF6L913 (Turbocharged)
 Type: Six Cylinder, Four Cycle,
 Air Cooled Diesel Engine
 Displacement: 373.5 Cu. In. [6.1 L]
 Governor: Mechanical
 Lubrication: Forced Circulation
 Air Cleaner: Oil Bath
 Oil Reservoir: 19.5 U.S. Quarts [18.4 L] Dry
 16.9 U.S. Quarts [16.0 L] Refill
 Fuel Tank: 38.9 U.S. Gallons [147.2 L]
 Operating Time; Full Load: 5.78 Hours
 Starter: 12 Volt Electric
Standard Features:
 Safety Shut Down Switches for Low Oil Pressure
 V-Belt Failure, and Loss of Prime.
 Instrument Panel with Temp. Gauge, Oil Pressure
 Gauge, Hourmeter/Tachometer Gauge &
 Alternator Failure Light.
 Muffler with Guard and Weather Cap.

DEUTZ PUBLISHED PERFORMANCE:

Max. Cont. B.H.P. 135 @ 2300 RPM
 Max. Dyn. B.H.P. 160 @ 2800 RPM

WARNING
 DO NOT USE IN EXPLOSIVE
 ATMOSPHERE OR FOR PUMPING
 VOLATILE FLAMMABLE LIQUIDS



THE GORMAN-RUPP COMPANY • MANSFIELD, OHIO

GORMAN-RUPP OF CANADA LIMITED • ST. THOMAS, ONTARIO, CANADA

Printed in U.S.A.

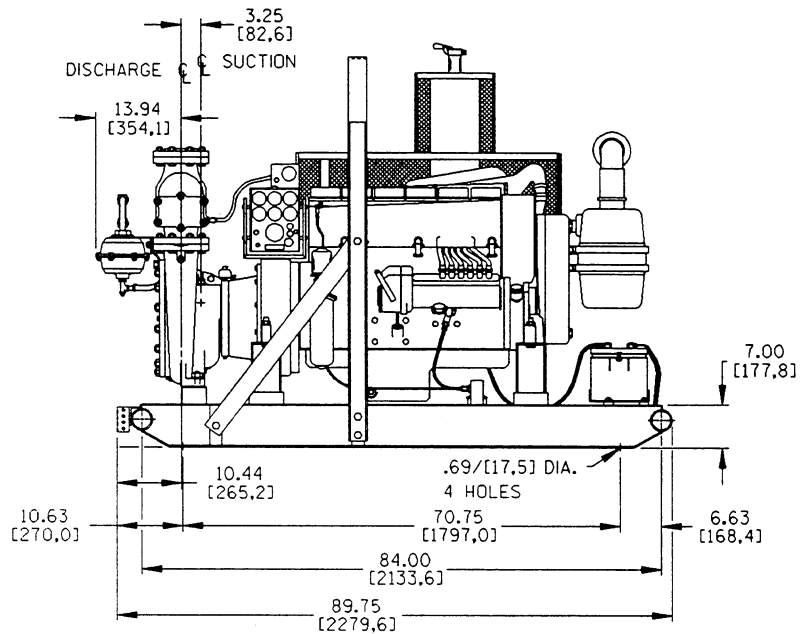
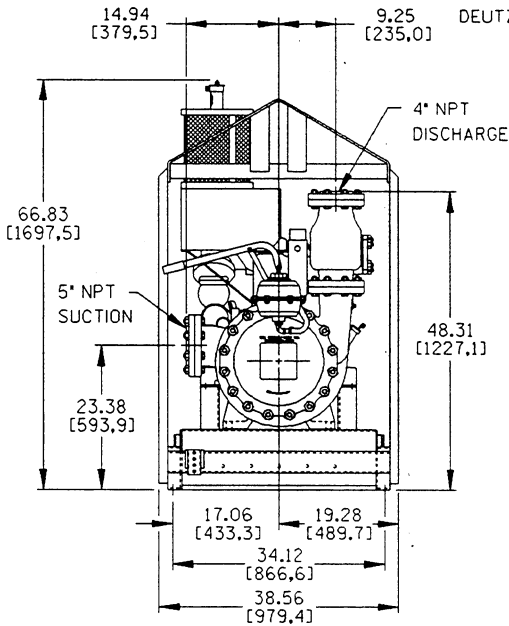
Specification Data

SECTION 60, PAGE 955

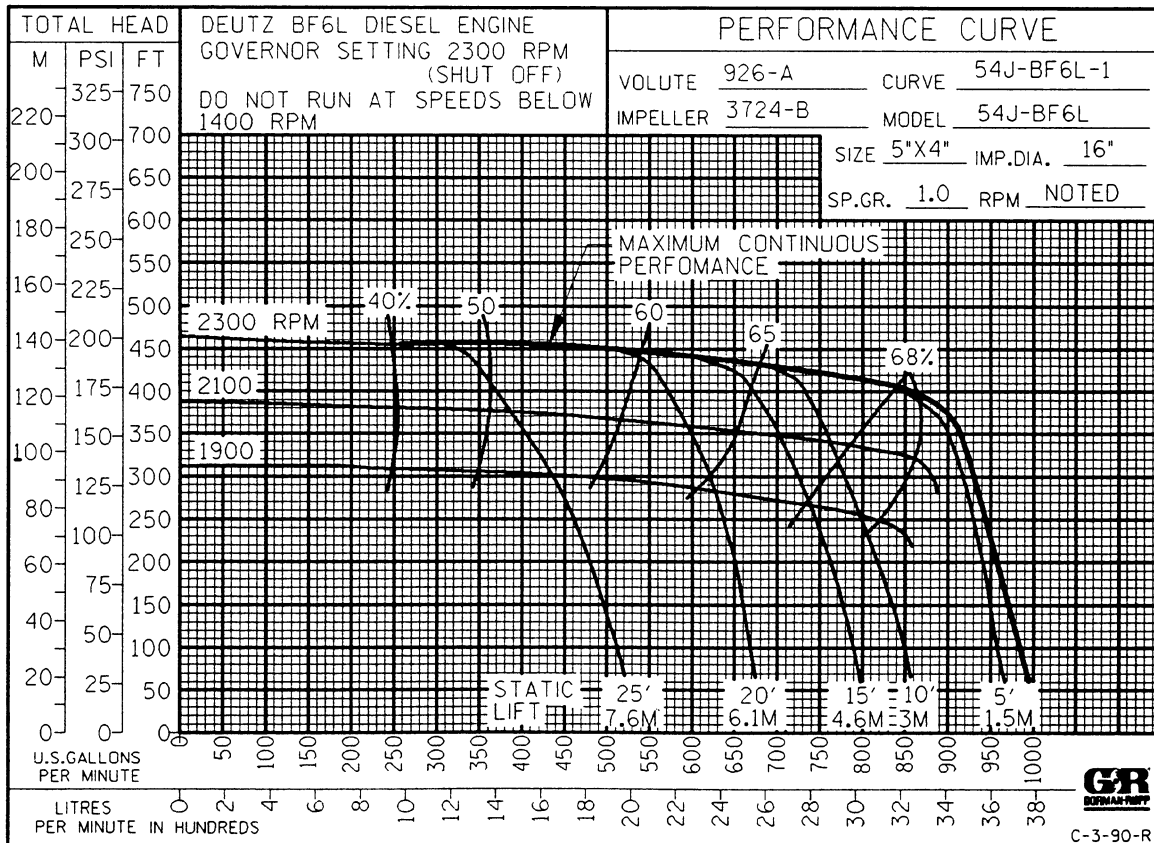
**OVERALL DIMENSIONS
and
WEIGHTS APPROXIMATE**

	SKID BASE	2-WHEEL
NET WEIGHT:	2524 LBS. [1145 KG.]	2754 LBS. [1249 KG.]
SHIPPING WEIGHTS:	2704 LBS. [1227 KG.]	2754 LBS. [1249 KG.]
EXPORT CRATE:	180 CU. FT. [5.1 CU. M.]	198 CU. FT. [5.6 CU. M.]

POWERED BY:
DEUTZ BF6L-913 TURBO-CHARGED DIESEL



DIMENSIONS:
INCHES
[MILLIMETERS]



GR
GORMAN-RUPP
C-3-90-R



THE GORMAN-RUPP COMPANY • MANSFIELD, OHIO

GORMAN-RUPP OF CANADA LIMITED • ST. THOMAS, ONTARIO, CANADA

Printed in U.S.A.