

Self Priming Centrifugal Pump



Model
62 1/2D1-23 S/G
Size 2 1/2" x 2 1/2"



PUMP SPECIFICATIONS

Size: 2 1/2" x 2 1/2" (64 mm x 64 mm) N.P.T. Female on Casing, with Adaptors for NPT to NSFHT Male.

Casing: Aluminum Alloy 319.

Maximum Operating Pressure 228 psi. (1572 kPa).*

Enclosed Type, Five Vane Impeller: Aluminum Alloy 319. Handles 5/16" (7,9 mm) Diameter Spherical Solids.

Replaceable Wear Ring: Bronze Alloy 954.

Replaceable Balance Ring: Bronze Alloy 954.

Intermediate Bracket: Aluminum Alloy 319.

Seal: Type 21, Mechanical Self-Lubricated. Carbon Rotating Face. Silicon Carbide Stationary Face. Fluorocarbon Elastomers (DuPont Viton® or Equivalent). Stainless Steel Type 18-8 Cage and Spring. Maximum Temperature of Liquid Pumped, 160°F (71°C).*

Shaft Sleeve: Stainless Steel 303.

Discharge Valve Body: Aluminum Alloy 319.

Gaskets: Fluorocarbon (DuPont Viton® or Equivalent).

Hardware: Standard Plated Steel.

Roll Cage with Rubber Feet.

Brass Hose Adapters.

Exhaust Primer Assy.

Discharge Check Valve.

Discharge Pressure Gauge.

Strainer.

Optional Equipment: Battery Wheel Kit w/Semi-Pneumatic Tires. High Pressure Hose Kit.

**Consult Factory for Applications Exceeding Maximum Pressure and/or Temperature Indicated.*



ENGINE SPECIFICATIONS

Model: Briggs & Stratton Vanguard.

Type: V-Twin, Four Cycle, Air Cooled, Overhead Valve Gasoline Engine.

Displacement: 38 Cu. In. (627 cc).

Lubrication: Forced Circulation.

Air Cleaner: Dry Type.

Fuel Tank: 10 U.S. Gal. (37,8 Liters).

Full Load Operating Time: 7.0 Hours.

Starter: 12 Volt Electric.

Standard Equipment: Exhaust Silencer Muffler. Hand Throttle and Stop Control.



GORMAN-RUPP PUMPS

www.grpumps.com

Specifications Subject to Change Without Notice

Printed in U.S.A.

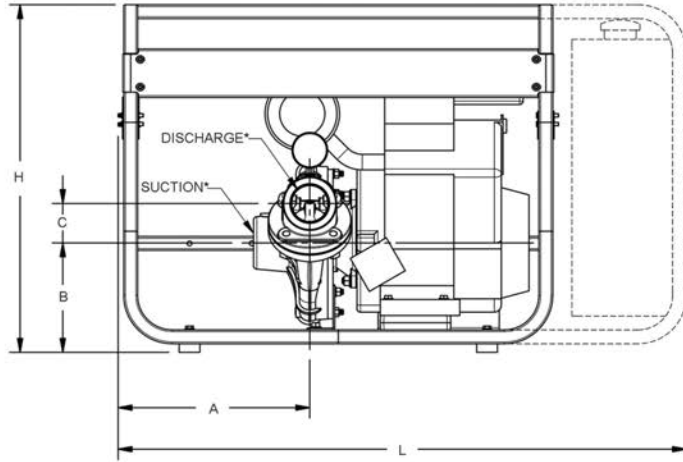
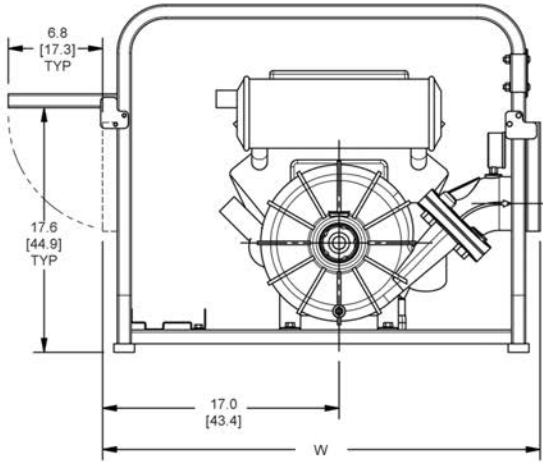
Specification Data

SECTION 60, PAGE 173

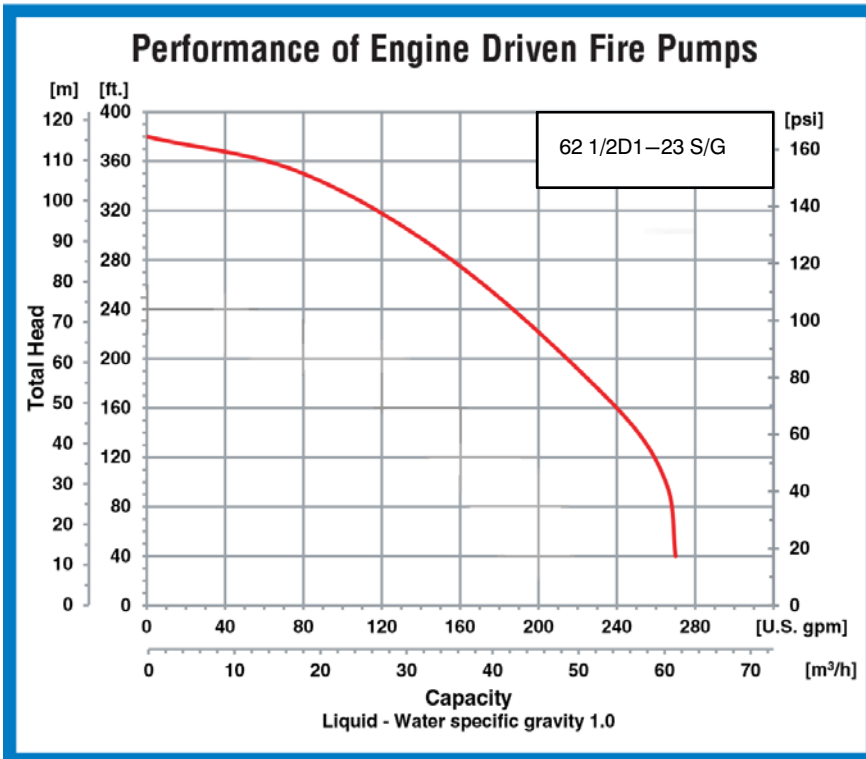
APPROXIMATE
DIMENSIONS and WEIGHTS

SHIPPING WEIGHT:

255 LBS. (41 KG.)
WHEEL KIT ADD 25 LBS. (11.3 KG.);
SHIPPING CRATE (SEPARATE) 27.6 CU. FT. (0,8 CU. M.)



DIMENSIONS						
Model	A	B	C	L	W	H
62 1/2D1-23 S/G	13.8 (35,2)	7.9 (20,1)	2.8 (7,2)	41.0 (104,3)	31.6 (80,3)	25.1 (63,8)



GORMAN-RUPP PUMPS

www.grpumps.com

Specifications Subject to Change Without Notice

Printed in U.S.A.