

ACEGH

Standard Centrifugal Pump

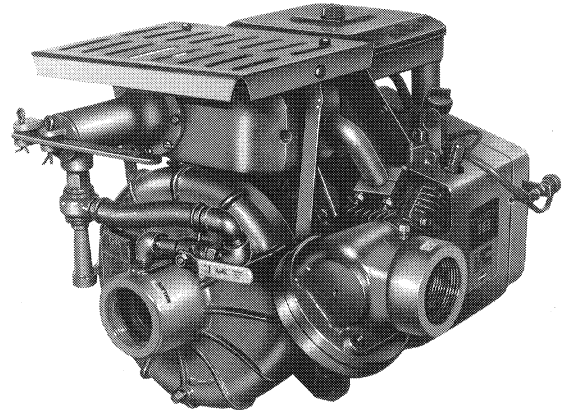
Gasoline Engine Driven

Model 62 1/2 D1-42 T

Size 2 1/2" x 2 1/2"



Total Head		CAPACITY OF PUMP IN U.S. GALLONS PER MINUTE AT CONTINUOUS PERFORMANCE				
P.S.I.	Feet					
147	337	31	31	31	31	31
130	300	69	76	76	76	76
108	250	87	104	116	116	116
87	200	112	126	136	150	162
65	150	118	144	152	167	198
44	100	126	156	168	183	218
Suction lift		25'	20'	15'	10'	5'



PUMP SPECIFICATIONS

Size: 2 1/2" [63,5 mm] x 2 1/2" [63,5 mm] N.P.T.-Female on Casing with Adapters for NPT to NSFHT Male

Casing: Aluminum No. 356-T6

(Maximum Operating Pressure 225 psi. [1551 kPa])

Impeller: Enclosed Type, Five Vanes, Aluminum No. 356-T6

(Handles 5/16" [7,9 mm] Dia. Spherical Solids)

Wear Ring; Replaceable: Bronze No. C83600

Balance Ring; Replaceable: Bronze No. C83600

Intermediate Bracket: Aluminum No. 356-T6

Seal: Type 21, Mechanical Self-Lubricated.

Rotating Face is Carbon.

Stationary Face is Ni-Resist.

Elastomers are Viton.

Cage and Spring are Stainless Steel No. 18-8.

Maximum Temperature of Liquid Pumped, 160°F [71°C].

Shaft Sleeve: Stainless Steel No. 304

Discharge Valve Body: Aluminum No. 319-T6

Flap Valve: Bronze No. C83600

Gaskets: Vegetable Fiber; Compressed Synthetic Fibers

Hardware: Standard Plated Steel

Standard Equipment:

Brass Hose Adapters

Exhaust Primer Assy.

Discharge Ball Valve

Discharge Pressure Gauge

Strainer

ENGINE SPECIFICATIONS

Model: Briggs and Stratton 422437 I/C

Type: Two Cylinder, Four Cycle, Air Cooled, Gasoline Engine

Displacement: 42.33 Cu. In. [694 cc]

Governor: Adjustable Mechanical, Equipped for Remote Control

Carburetor: Down Draft Flo-Jet w/ Integral Fuel Pump

Lubrication: Forced Circulation

Air Cleaner: Dry Type, Dual Element

Oil Reservoir: 3 U.S. Pints [1.4 L]

Fuel Tank: 6.6 U.S. Gallons [25 L] with 6 Feet of Quick-Connect Fuel Line and Priming Bulb

Operating Time; Full Load: 3.5 Hours

/1.90 Gallons Per Hour

Starter: 12 Volt Electric Starter/Alternator

Standard Features:

Industrial/Commercial Engine.

Cobalite™ Exhaust Valve and Seat.

Cast Iron Cylinder Sleeve.

Magnetron™ Electronic Ignition.

Oil Level Dip Stick.

Oil Filter.

Oil Gard™ Low Oil Shut Down With Warning Light.

Manual Choke & Throttle.

Replaceable Ball Bearings.

Muffler with Guard.

BRIGGS & STRATTON PUBLISHED PERFORMANCE:

Max. Cont. B.H.P. 15.0 @ 3600 RPM

Max. Dyn. B.H.P. 18.0 @ 3600 RPM

WARNING

DO NOT USE IN EXPLOSIVE
ATMOSPHERE OR FOR PUMPING
VOLATILE FLAMMABLE LIQUIDS



THE GORMAN-RUPP COMPANY • MANSFIELD, OHIO

GORMAN-RUPP OF CANADA LIMITED • ST. THOMAS, ONTARIO, CANADA

Printed in U.S.A.

Specification Data

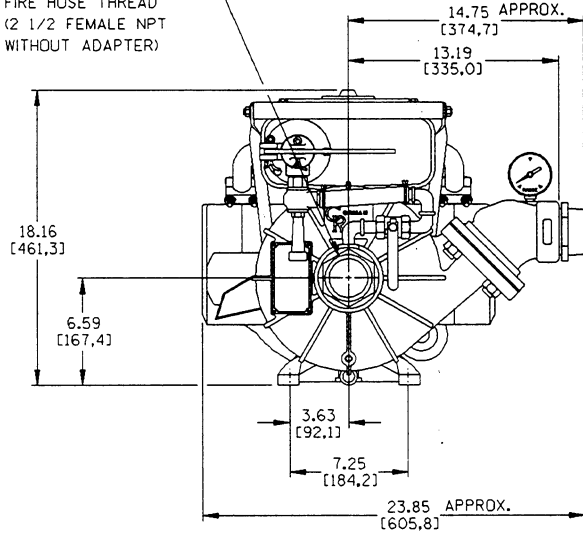
SECTION 60, PAGE 161

**OVERALL DIMENSIONS
and
WEIGHTS APPROXIMATE**

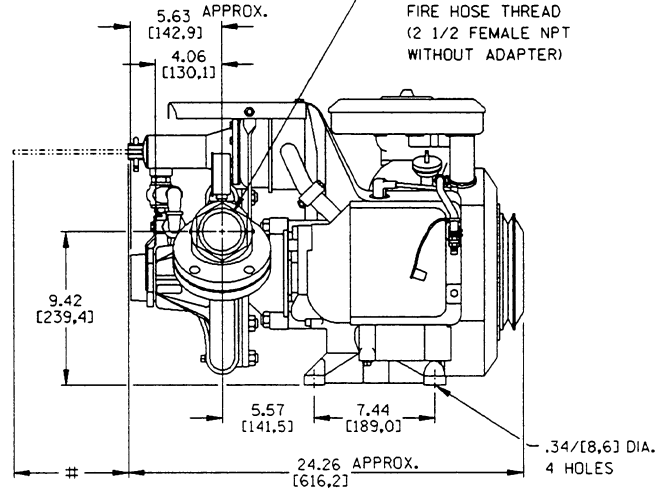
NET WEIGHT: 170 LBS. [77 KG.]
SHIPPING WEIGHTS: 185 LBS. [84 KG.]
EXPORT CRATE: 13 CU. FT. [.37 CU. M.]

ALLOW 7.25/[184,2] FOR EXHAUST PRIMER OPERATION

SUCTION:
2.50-7 1/2 THREADS
NATIONAL STANDARD
FIRE HOSE THREAD
(2 1/2 FEMALE NPT
WITHOUT ADAPTER)

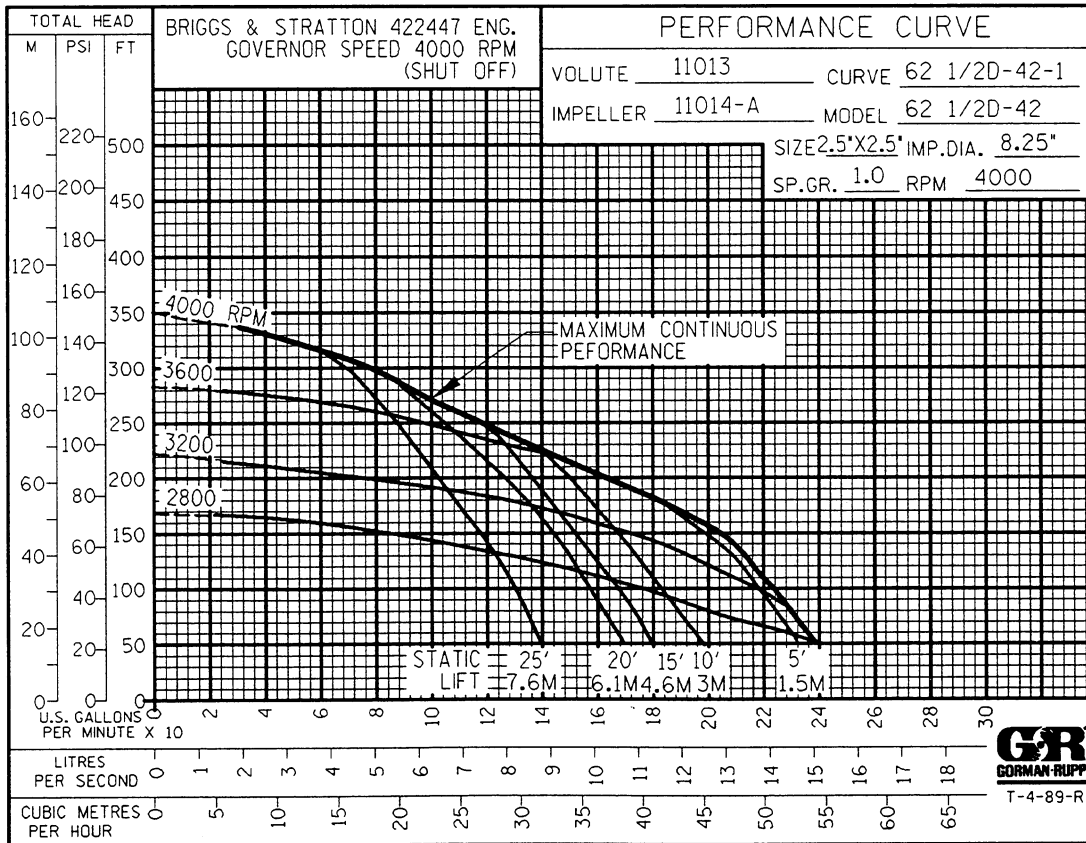


DISCHARGE:
2.50-7 1/2 THREADS
NATIONAL STANDARD
FIRE HOSE THREAD
(2 1/2 FEMALE NPT
WITHOUT ADAPTER)



DIMENSIONS:
INCHES
[MILLIMETERS]

POWERED BY BRIGGS & STRATTON 18 HP 422437 ENGINE.



THE GORMAN-RUPP COMPANY • MANSFIELD, OHIO

GORMAN-RUPP OF CANADA LIMITED • ST. THOMAS, ONTARIO, CANADA

Printed in U.S.A.