

A C E G



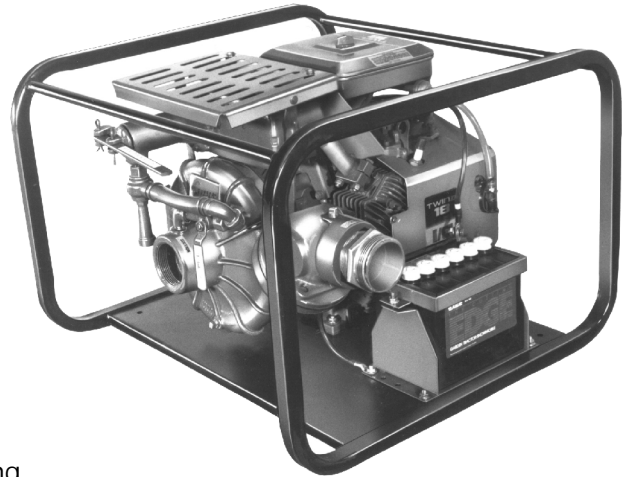
Standard Centrifugal Pump

Gasoline Engine Driven

Model 62 1/2D1-42 S/G

Size 2 1/2" x 2 1/2"

Total Head		Capacity Of Pump In U.S. Gallons Per Minute At Continuous Performance				
P.S.I.	Feet					
147	337	31	31	31	31	31
130	300	69	76	76	76	76
108	250	87	104	116	116	116
87	200	112	126	136	150	162
65	150	118	144	152	167	198
44	100	126	156	168	183	218
Suction Lift		25'	20'	15'	10'	5'



PUMP SPECIFICATIONS

Size: 2 1/2" x 2 1/2" (64 mm x 64 mm) N.P.T. Female on Casing, with Adaptors for NPT to NSFHT Male.

Casing: Aluminum Alloy 356-T6. Maximum Operating Pressure 228 psi. (1572 kPa).*

Enclosed Type, Five Vane Impeller: Aluminum Alloy 356-T6. Handles 5/16" (7,9 mm) Diameter Spherical Solids.

Replaceable Wear Ring: Copper Alloy C93200.

Replaceable Balance Ring: Copper Alloy C93200.

Intermediate Bracket: Aluminum Alloy 356-T6.

Seal: Type 21, Mechanical Self-Lubricated. Carbon Rotating Face. Ni-Resist Stationary Face. Fluorocarbon Elastomers (DuPont Viton® or Equivalent). Stainless Steel Type 18-8 Cage and Spring. Maximum Temperature of Liquid Pumped, 160°F (71°C).*

Shaft Sleeve: Alloy Steel No. 4130.

Discharge Valve Body: Aluminum Alloy 319-T6.

Gaskets: Vegetable Fiber, Buna-N.

Hardware: Standard Plated Steel.

Roll Cage with Rubber Feet.

Brass Hose Adapters.

Exhaust Primer Assy.

Discharge Check Valve.

Discharge Pressure Gauge.

Strainer.

Optional Equipment: Wheel Kit. Battery.

* Consult Factory for Applications Exceeding Maximum Pressure and/or Temperature Indicated.



ENGINE SPECIFICATIONS

Model: Briggs and Stratton 422437 I/C.

Type: Two Cylinder, Four Cycle, Air Cooled, Gasoline Engine.

Displacement: 42.33 Cu. In. (694 cc).

Governor: Adjustable Mechanical, Equipped for Remote Control.

Carburetor: Down Draft Flo-Jet w/Integral Fuel Pump.

Lubrication: Forced Circulation.

Air Cleaner: Dry Type, Duel Element.

Oil Reservoir: 3 U.S. Pints (1.4 L).

Fuel Tank: 6.6 U.S. Gallons [25 L] with 6 Feet of Quick-Connect Fuel Line and Priming Bulb.

Full Load Operating Time: 3.5 Hours.

Starter: 12 Volt Electric Starter/Alternator.

Standard Features: Cobalit™ Exhaust Valve and Seat. Cast Iron Cylinder Sleeve. Magnetron™ Electronic Ignition. Oil Level Dip Stick. Oil Gard™ Low Oil Shut Down With Warning Light. Manual Choke & Throttle. Replaceable Ball Bearings.

BRIGGS & STRATTON PUBLISHED PERFORMANCE:

Maximum Continuous B.H.P. 15.0 @ 3600 RPM

Maximum Dynamic B.H.P. 18.0 @ 3600 RPM



THE GORMAN-RUPP COMPANY • MANSFIELD, OHIO

GORMAN-RUPP OF CANADA LIMITED • ST. THOMAS, ONTARIO, CANADA

www.gormanrupp.com

Specifications Subject to Change Without Notice

Printed in U.S.A.

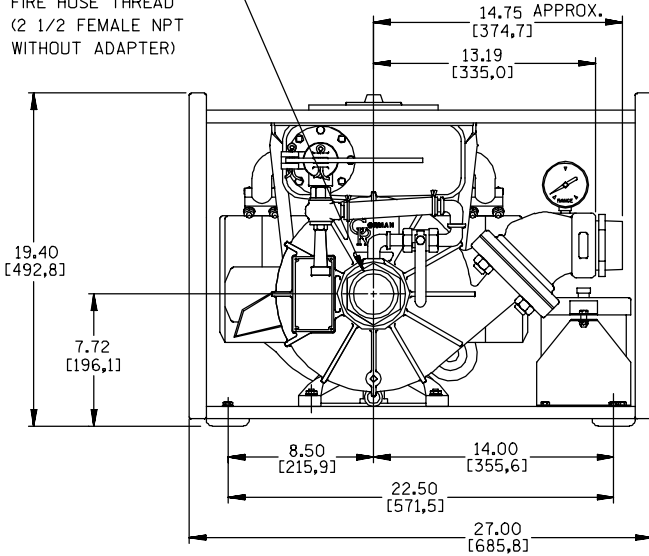
Specification Data

SECTION 60, PAGE 160

APPROXIMATE DIMENSIONS and WEIGHTS

	BASE	2-WHEEL
NET WEIGHT:	193 LBS. [88 KG.]	215 LBS. [98 KG.]
SHIPPING WEIGHTS:	208 LBS. [94 KG.]	231 LBS. [105 KG.]
EXPORT CRATE:	13.4 CU. FT. [.38 CU. M.]	16.5 CU. FT. [.47 CU. M.]

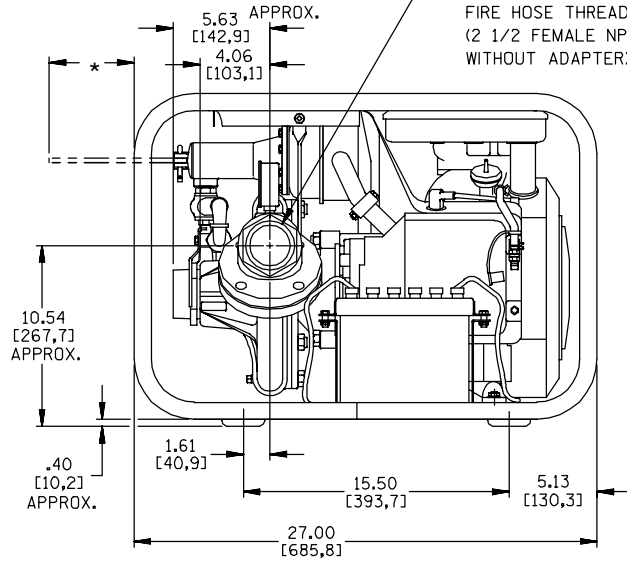
SUCTION:
2.50-7 1/2 THREADS
NATIONAL STANDARD
FIRE HOSE THREAD
(2 1/2 FEMALE NPT
WITHOUT ADAPTER)



DIMENSIONS:
INCHES
[MILLIMETERS]

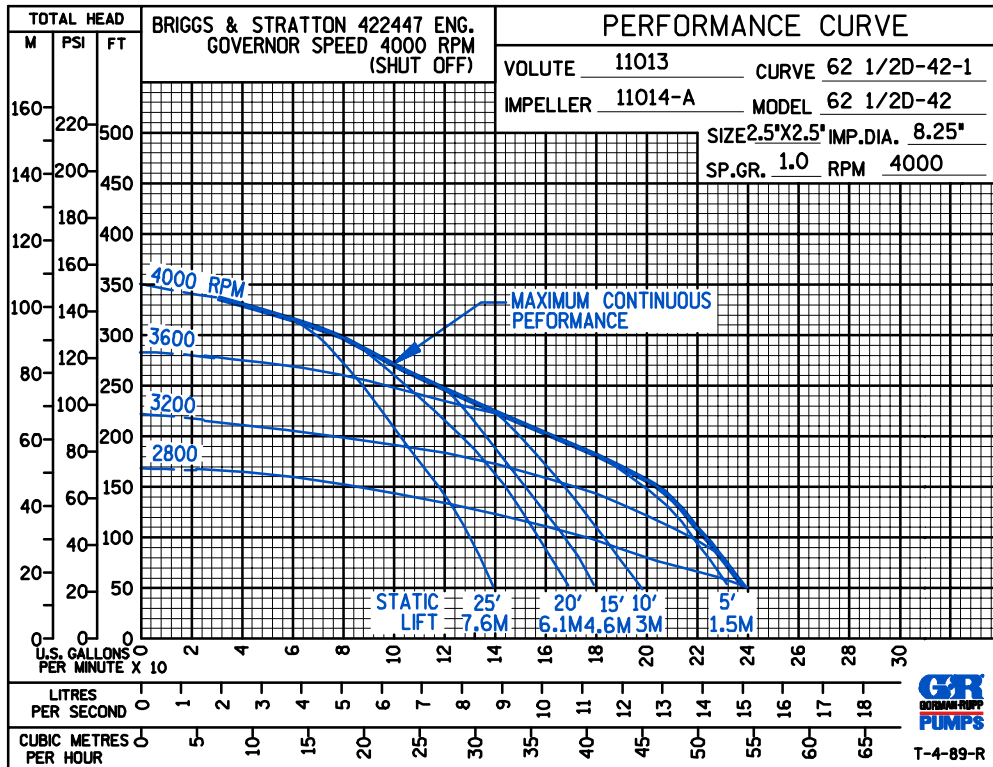
* ALLOW 5.03/[127,8] FOR EXHAUST PRIMER OPERATION

DISCHARGE:
2.50-7 1/2 THREADS
NATIONAL STANDARD
FIRE HOSE THREAD
(2 1/2 FEMALE NPT
WITHOUT ADAPTER)



POWERED BY BRIGGS & STRATTON 18 HP 422437 ENGINE.

SHOWN WITH OPTIONAL BATTERY



THE GORMAN-RUPP COMPANY • MANSFIELD, OHIO

GORMAN-RUPP OF CANADA LIMITED • ST. THOMAS, ONTARIO, CANADA

Specifications Subject to Change Without Notice

Printed in U.S.A.