

Self Priming Centrifugal Pumps



Models
62 1/2A1-GX390 S/G and 62 1/2A1-13 S/G

Size 2 1/2" x 2 1/2"



PUMP SPECIFICATIONS

Size: 2 1/2" x 2 1/2" (64 mm x 64 mm) N.P.T.-Female with Adapters for NPT to NSFHT Male.

Casing: Aluminum No. 356-T6. Maximum Operating Pressure 150 psi (1034 kPa)*.

Enclosed Type, Five Vane Impeller: Aluminum No. 356-T6. Handles 5/16" (7,9 mm) Dia. Spherical Solids.

Replaceable Wear Ring: Bronze No. C83600.

Intermediate Bracket: Aluminum No. 356-T6.

Seal: Type 2, Mechanical Self-Lubricated. Carbon Rotating Face. Ni-Resist Stationary Face. Fluorocarbon Elastomers (DuPont Viton® or Equivalent). Stainless Steel No. 18-8 Cage and Spring. Maximum Temperature of Liquid Pumped, 160°F (71°C)*.

Shaft Sleeve: Bronze No. C83600.

Check Valve Housing: Aluminum No. 319-T6.

Flap Valve: Buna-N and Bronze No. C83600.

Gaskets: Fluorocarbon (DuPont Viton® or Equivalent)

Hardware: Standard Plated Steel.

Roll Cage with Rubber Feet.

Brass Hose Adapters.

Exhaust Primer Assy.

Discharge Check Valve.

Discharge Pressure Gauge.

Strainer.

Optional Equipment: Battery. Wheel Kit w/Semi-Pneumatic Tires. High Pressure Hose Kit.

**Consult Factory for Applications Exceeding Maximum Pressure and/or Temperature Indicated.*



62 1/2A1-GX390 S/G SHOWN



HONDA GASOLINE ENGINE SPECIFICATIONS

Model: Honda GX390.

Type: Single Cylinder, Four Cycle, Air Cooled, Overhead Valve, Gasoline Engine.

Displacement: 23.7 Cu. In. (388 cc).

Carburetor: Horizontal Type.

Lubrication: Splash System.

Air Cleaner: Dual Element.

Fuel Tank: 1.6 U.S. Gal. (6,1 Liters).

Full Load Operating Time: 2.5 Hrs.

Starter: 12V DC Electric.

Standard Equipment: Muffler w/Guard. Manual Rotary Stop Switch. Manual Choke and Throttle Control. "Oil Alert"™ Low Oil Shut Down. Transistorized Magneto Ignition.

B & S ENGINE SPECIFICATIONS

Model: Briggs & Stratton Vanguard.

Type: Single Cylinder Four Cycle, Air Cooled, Overhead Valve Gasoline Engine.

Displacement: 24 Cu. In. (392 cc).

Lubrication: Forced Circulation.

Air Cleaner: Dry Type.

Fuel Tank: 2.25 U.S. Gal. (8,5 Liters).

Full Load Operating Time: 1.8 Hours.

Starter: 12 Volt Electric.

Standard Equipment: Exhaust Silencer Muffler w/Guard. Hand Throttle and Stop Control.



GORMAN-RUPP PUMPS

www.grpumps.com

Specifications Subject to Change Without Notice

Printed in U.S.A.

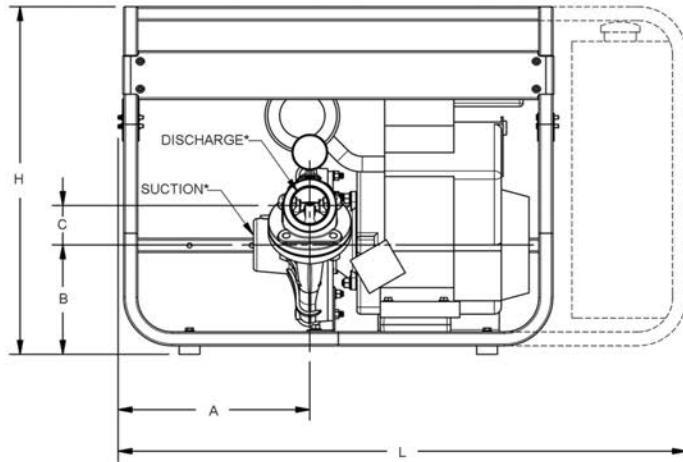
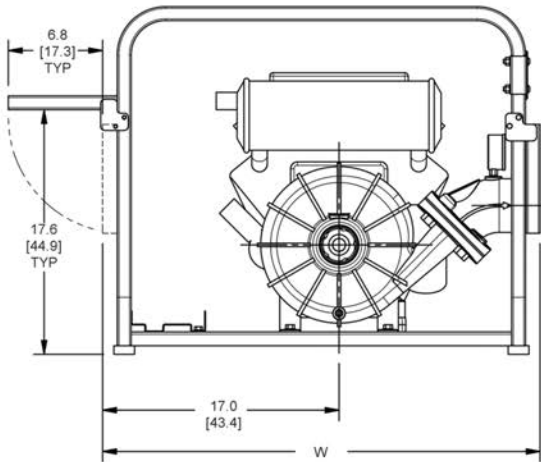
Specification Data

SECTION 60, PAGE 157

APPROXIMATE
DIMENSIONS and WEIGHTS

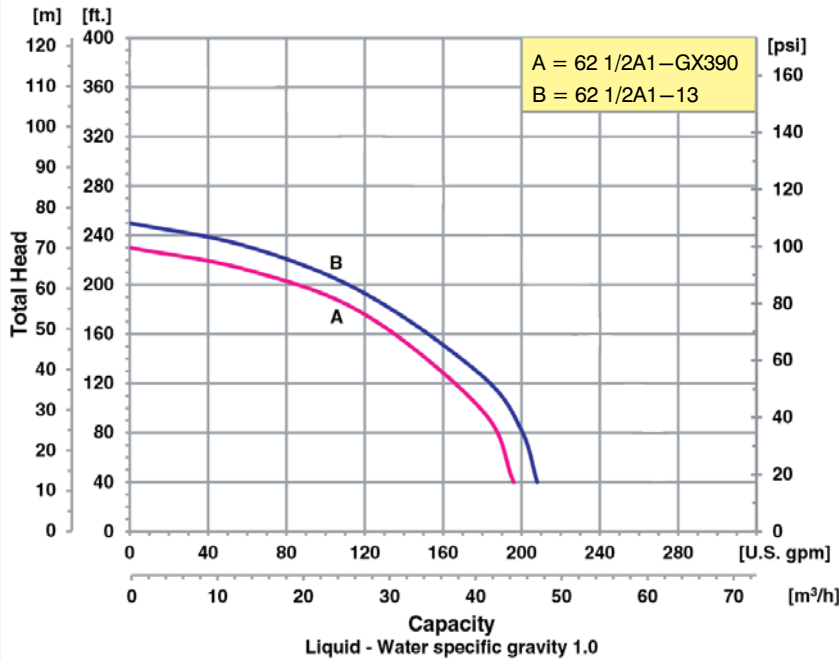
SHIPPING WEIGHT:

62 1/2A1—GX390 S/G: 200 LBS. (90,7 KG.)
 62 1/2A1—13 S/G: 225 LBS. (102,1KG.)
 WHEEL KIT ADD 25 LBS. (11.3 KG.); SHIPPING CRATE
 (SEPARATE) 21.3 CU. FT. (0,6 CU. M.)



DIMENSIONS						
Model	A	B	C	L	W	H
62 1/2A1—13 S/G	13.3 (33,7)	6.8 (17,4)	4.6 (11,7)	31.8 (80,8)	31.6 (80,3)	25.1 (63,8)
62 1/2A1—GX390 S/G	13.3 (33,7)	6.8 (17,4)	4.6 (11,7)	31.8 (80,8)	31.6 (80,3)	25.1 (63,8)

Performance of Engine Driven Fire Pumps



GORMAN-RUPP PUMPS

www.grpumps.com

Specifications Subject to Change Without Notice

Printed in U.S.A.