

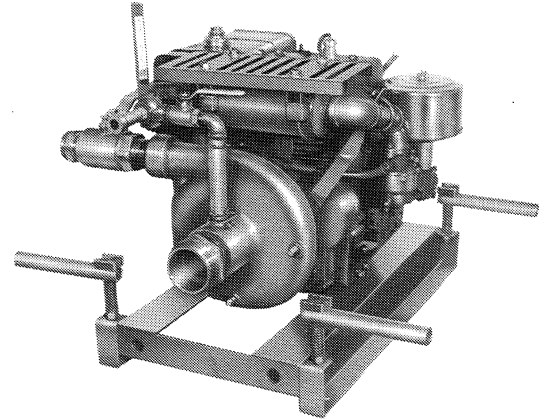
ACEGH

# Standard Centrifugal Pump

Gasoline Engine Driven  
Model 61 1/2A1-22  
Size 2 1/2" x 1 1/2"



Total Head		CAPACITY OF PUMP IN U.S. GALLONS PER MINUTE AT CONTINUOUS PERFORMANCE				
P.S.I.	Feet					
117	270	16	16	16	16	16
104	240	61	68	68	68	68
86	200	67	94	95	95	95
69	160	68	101	119	121	121
53	120	69	102	127	141	145
35	80	70	102	130	147	162
17	40	71	103	130	150	166
<b>Suction lift</b>		<b>25'</b>	<b>20'</b>	<b>15'</b>	<b>10'</b>	<b>5'</b>



**PUMP SPECIFICATIONS**

Size: 2 1/2" [63,5 mm] x 1 1/2" [38,1 mm] N.P.T.-Female on Casing with Adapters for NPT to NSFHT Male  
 Casing: Aluminum No. 356-T6  
 (Maximum Operating Pressure 180 psi. [1241 kPa])  
 Impeller: Enclosed Type, Five Vanes, Aluminum No. 356-T6  
 (Handles 7/32" [5,6 mm] Dia. Spherical Solids)  
 Wear Ring; Replaceable: Cast Iron - Special Ni-Resist  
 Intermediate Bracket: Aluminum No. 356-T6  
 Seal: Type 2, Mechanical Self-Lubricated.  
 Rotating Face is Carbon.  
 Stationary Face is Ni-Resist.  
 Elastomers are Viton.  
 Cage and Spring are Stainless Steel No. 18-8.  
 Maximum Temperature of Liquid Pumped, 160°F [71 °C].  
 Shaft Sleeve: Bronze No. C83600  
 Gaskets: Vegetable Fiber  
 Hardware: Standard Plated Steel  
**Standard Equipment:**  
 Brass Hose Adapters  
 Base  
 Carrying Handles  
 Discharge Ball Valve  
 Exhaust Primer Assy.  
 Discharge Pressure Gauge  
 Strainer  
**Optional Equipment:**  
 2 Wheel Truck Assy with Semi-Pneumatic Tires, 2.75" [69,9 mm] x 10" [254,0 mm]

**ENGINE SPECIFICATIONS**

Model: Briggs and Stratton 221432 I/C  
 Type: Single Cylinder, Four Cycle, Air Cooled, Gasoline Engine  
 Displacement: 22.04 Cu. In. [361 cc]  
 Governor: Mechanical  
 Carburetor: Flo-Jet  
 Lubrication: Splash System  
 Air Cleaner: Dry Type, Dual Element  
 Oil Reservoir: 3 U.S. Pints [1.4 L]  
 Fuel Tank: 1.50 U.S. Gallons [5.7 L]  
 Operating Time; Full Load: 1.5 Hours  
 Starter: Rope Rewind  
**Standard Features:**  
 Industrial/Commercial Engine.  
 Cobalit™ Exhaust Valve and Seat.  
 Cast Iron Cylinder Sleeve.  
 Oil Level Dip Stick.  
 Magnetron™ Electronic Ignition.  
 Oil Gard™ Low Oil Shut Down With Warning Light.  
 Manual Choke & Throttle.  
 Replaceable Ball Bearings.  
 Muffler with Guard.  
**Optional Equipment:**  
 12 Volt Electric Start & Generator.

**BRIGGS & STRATTON PUBLISHED PERFORMANCE:**

Max. Cont. B.H.P. 8.5 @ 3600 RPM  
 Max. Dyn. B.H.P. 10.0 @ 3600 RPM



THE GORMAN-RUPP COMPANY • MANSFIELD, OHIO

GORMAN-RUPP OF CANADA LIMITED • ST. THOMAS, ONTARIO, CANADA

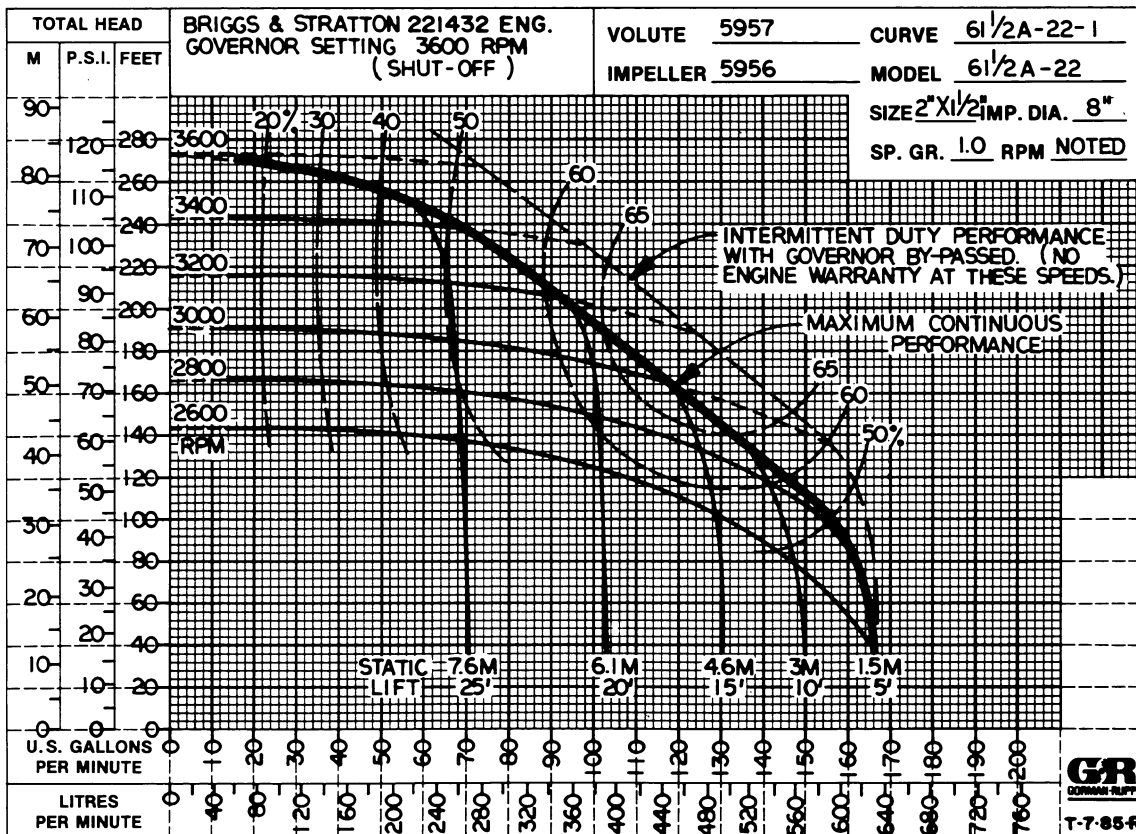
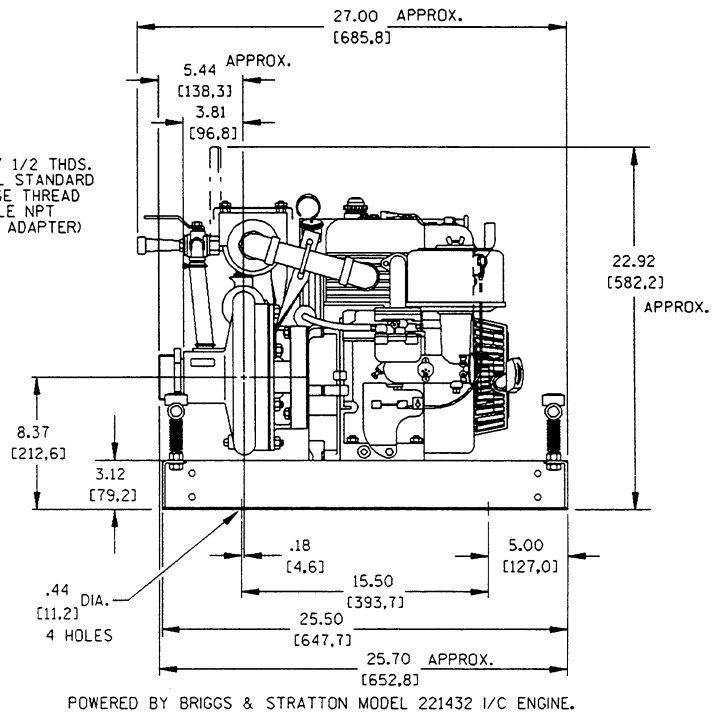
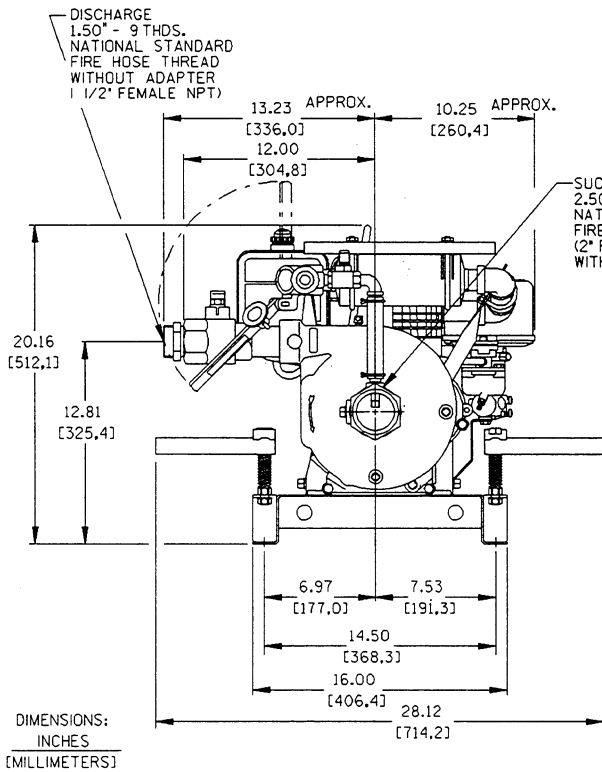
Printed in U.S.A.

# Specification Data

SECTION 60, PAGE 99

OVERALL DIMENSIONS and WEIGHTS APPROXIMATE

	<b>BASE</b>	<b>2-WHEEL</b>
<b>NET WEIGHT:</b>	138 LBS. [63 KG.]	163 LBS. [74 KG.]
<b>SHIPPING WEIGHTS:</b>	148 LBS. [67 KG.]	175 LBS. [79 KG.]
<b>EXPORT CRATE:</b>	10.1 CU. FT. [.29 CU. M.]	12.0 CU. FT. [.34 CU. M.]



THE GORMAN-RUPP COMPANY • MANSFIELD, OHIO

GORMAN-RUPP OF CANADA LIMITED • ST. THOMAS, ONTARIO, CANADA

Printed in U.S.A.