

ACEGH

Standard Centrifugal Pump



Gasoline Engine Driven
Model 61 1/2DP
Size 1 1/2" x 1 1/2"

MAXIMUM HEAD CONTINUOUS PERFORMANCE					
FEET (meters)	184 (56)	276 (84)	369 (112)	461 (141)	553 (169)
PSI (kg/cm ²)	80 (6)	120(8)	160 (11)	200 (14)	240 (17)
GPM (lph)	49 (11 100)	43 (9 780)	33 (7 500)	20 (4 560)	6 (1 380)



PUMP SPECIFICATIONS

Size: 1 1/2" x 1 1/2" (38 mm x 38 mm) NPSH, Male.

Casing: Aluminum No. 356-T7. Maximum Operating Pressure 500 lbs. (35,2 kg/cm²).

Impeller: Enclosed Type, Thirty Vanes, Aluminum No. 356-T7 with Steel Threaded Insert. Handles 3/16" (4 mm) Diameter Spherical Solids.

Two Replaceable Wear Rings: Bronze No. 660.

Intermediate Bracket: Aluminum No. 356-T7.

Intermediate Retaining Ring: Stainless Steel No. 18-8.

Seal: Type 8A, Mechanical Self-Lubricated. Rotating Face is Ceramic. Stationary Face is Carbon. Elastomers are Buna-N. Cage and Spring are Stainless Steel No. 18-8. Maximum Temperature of Liquid Pumped, 160°F (71°C).

Engine Mounting Bracket: Aluminum No. 6061-T4.

Back Pack Frame: Steel Tubing with Vibration Mounting.

Gaskets: Neoprene.

O-Rings: Buna-N.

Hardware: Standard Plated Steel.

Standard Equipment: Portable Polyethylene Fuel Tank, 6.6 Gallons (25 liter), Complete with 8-Foot (2,4 meter) Fuel Line, Priming Bulb and Quick Disconnect Fittings. Carrying Handle. Strainer with Built in Foot Valve. Thread Protectors with Chains.

Optional Equipment: Hand Priming Pump Assembly. Back Pack Harness.

**WARNING!**

Do not use for pumping volatile flammable liquids.

ENGINE SPECIFICATIONS

Model: U.S. Motor Power 82049.

Type: Single Cylinder, Two Cycle, Air Cooled, Gasoline Engine.

Displacement: 8.2 Cu. In. (0,134 liter).

Carburetor: Tillotson; Diaphragm.

Lubrication: Self-Lubricated with Oil in Fuel.

Air Cleaner: Dry Type with Screen.

Operating Time; Full Load: 6.5 Hours.

Starter: Rope Recoil.

Standard Features: Safety Shutdown Switches for Engine. Over-Speed and Loss of Pump Prime. Twist Lock Hand Throttle. Extra Spark Plug and Wrench. Exhaust Muffler.

MOTOR SPECIFICATIONS

Maximum Continuous B.H.P. 8.0 @ 7000 RPM



THE GORMAN-RUPP COMPANY • MANSFIELD, OHIO

GORMAN-RUPP OF CANADA LIMITED • ST. THOMAS, ONTARIO, CANADA

Specifications Subject to Change Without Notice

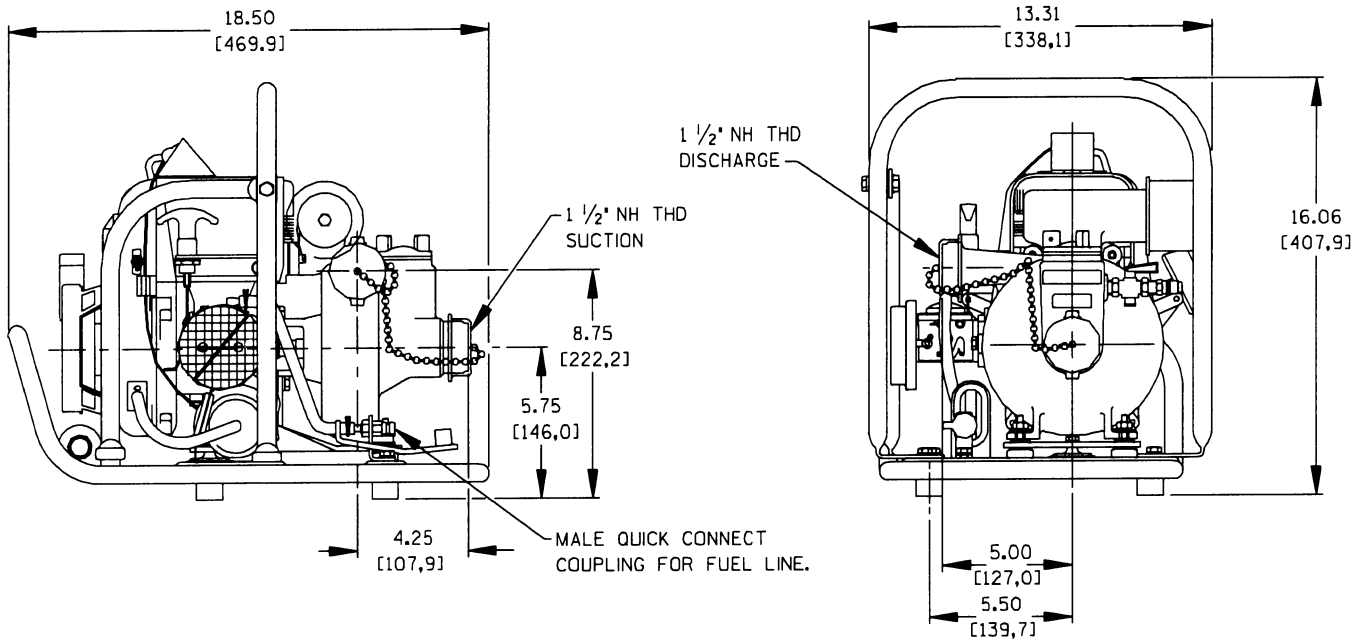
Printed in U.S.A.

Specification Data

SECTION 60, PAGE 90

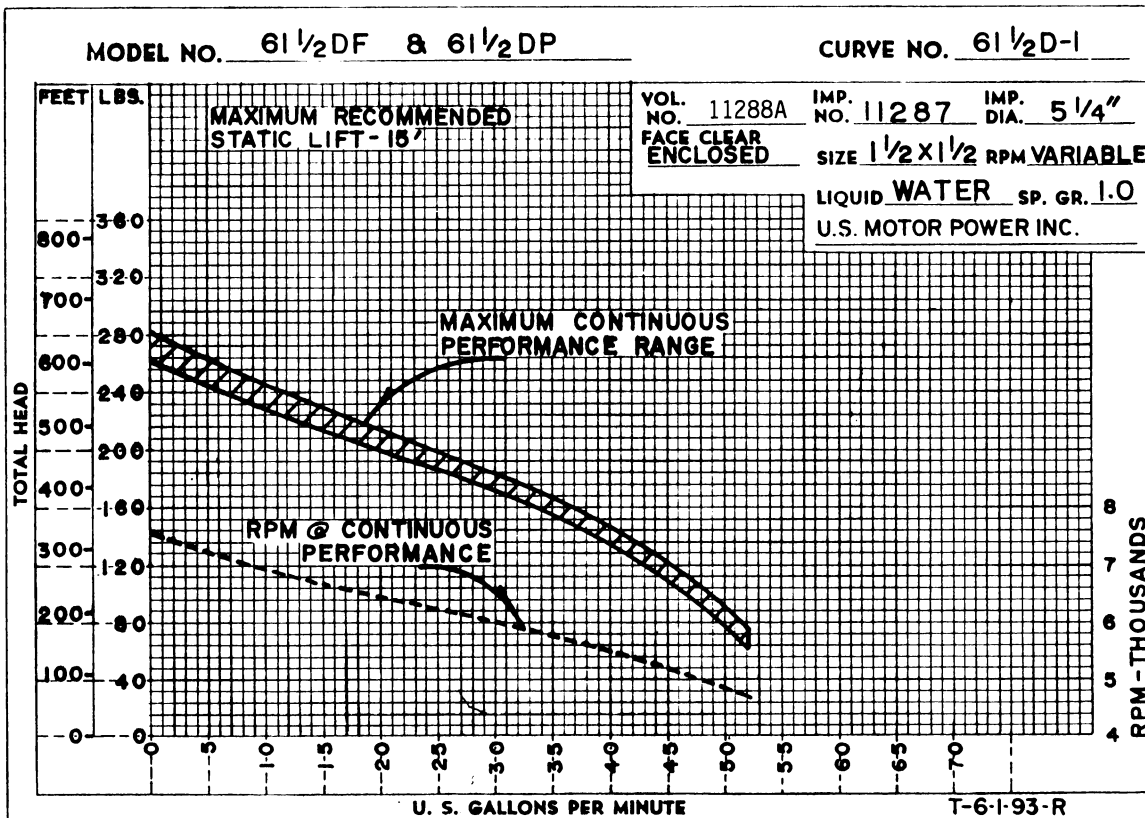
OVERALL DIMENSIONS
and
APPROXIMATE WEIGHTS

NET WEIGHT: 33 LBS. (15 KG.)
SHIPPING WEIGHT: 43.5 LBS. (20 KG.)
EXPORT CRATE: 5.3 CU. FT. (0,15 CU. M.)



DIMENSIONS:
INCHES
[MILLIMETERS]

POWERED BY: U.S. MOTOR POWER.
SINGLE CYLINDER GASOLINE ENGINE.



THE GORMAN-RUPP COMPANY • MANSFIELD, OHIO

GORMAN-RUPP OF CANADA LIMITED • ST. THOMAS, ONTARIO, CANADA

Specifications Subject to Change Without Notice

Printed in U.S.A.