



G-R HARD IRON FITTED BASIC PUMP

EQUIPPED WITH



SELF-PRIMING CENTRIFUGAL PUMP

Model: T8E71SC-B

Various Patents Apply

Pump Specifications

Size	8" (203 mm) ASA Flanged Suction x 8" (203 mm) NPT Female Discharge
Impeller Type	Semi-Open, Two Vane
Solids-Handling Capability	1.50" (38,1 mm) Spherical Diameter
Seal Type	Cartridge Type, Mechanical, Oil-Lubricated, Double Floating, Self-Aligning
Radial Bearing	Open Single Row Ball
Thrust Bearing	Open Double Row Ball
Bearing and Seal Cavity Lubrication	SAE 30 Non-Detergent Oil
Maximum Operating Pressure	137 psi (945 kPa)*
Max Temp of Liquid Pumped	160°F (71°C).*

Pump Materials

Casing	Gray Iron 30
Impeller	GR Hard Iron
Impeller Shaft	Alloy Steel 4150
Shaft Sleeve	Alloy Steel 4130
Seal: Stationary Face	Silicon Carbide
Rotating Face	Silicon Carbide
Elastomer	Fluorocarbon FKM, (Viton® or Equivalent)
Replaceable Wear Plate	G-R Hard Iron
Replaceable Self Cleaning Wear Plate Insert	Alloy Steel AR400F
Removable Adjustable Cover Plate	Gray Iron 30
Removable Inspection Cover Plate	Gray Iron 30 – 20 lbs. (9,1 kg.)
Flap Valve	Neoprene with Nylon and Steel Reinforcing
Seal Plate	G-R Hard Iron
Bearing Housing	Gray Iron 30
Flanges	Gray Iron 30
Gaskets	Buna-N, Compressed Synthetic Fiber, PTFE, Cork and Rubber
O-Rings	Buna-N
Hardware	Standard Plated Steel

\*Consult Factory for Applications Exceeding Maximum Pressure and/or Temperature Indicated.

**Standard Equipment:** Brass Pressure Relief Valve, Bearing and Seal Cavity Oil Level Sight Gauges. Eradicator Solids Reduction System with Self-Cleaning Wearplate.

**Optional Equipment:** Automatic Air Release Valve, Metal Bellows Seal, 120V/240V Casing Heater, High Pump Temperature Shutdown Kit, G-R Hard Iron Casing, Drain Kit, Gauge Kit. Suction and Discharge Spool Flanges:

8" ASA (Specify Model T8E71SC-B /F)

200 mm DIN 2527 – PN 16 (Specify Model T8E71SC-B /FM).



Shown with Optional Suction and Discharge Spool Flanges (Available in ASA or DIN Standard Sizes).

Super T Series With Eradicator Features and Benefits

**Easy To Service And Maintain** - Pump is mounted above liquid being pumped with only the suction line down in liquid.

**Dual Bearing Protection** – An atmospheric barrier along with two lip seals provide additional protection of the pump bearings (not available on 2" models).

**Inspection Cover** – Patented, lightweight inspection cover for easy access to the impeller without removing the entire backcover plate or piping. (2" – 8" models).

**Self-Cleaning Wearplate** - Incorporating a number of notches and grooves, as well as a revolutionary tooth (tooth used on T3 – T10 models), that helps break up stringy materials and pass them through the pump without impacting performance or interrupting service. This greatly reduces troublesome clogging and expensive downtime.

5 Year Super T Series Warranty

**Up To 3" Diameter Spherical Solids Handling** (4" – 10" models).

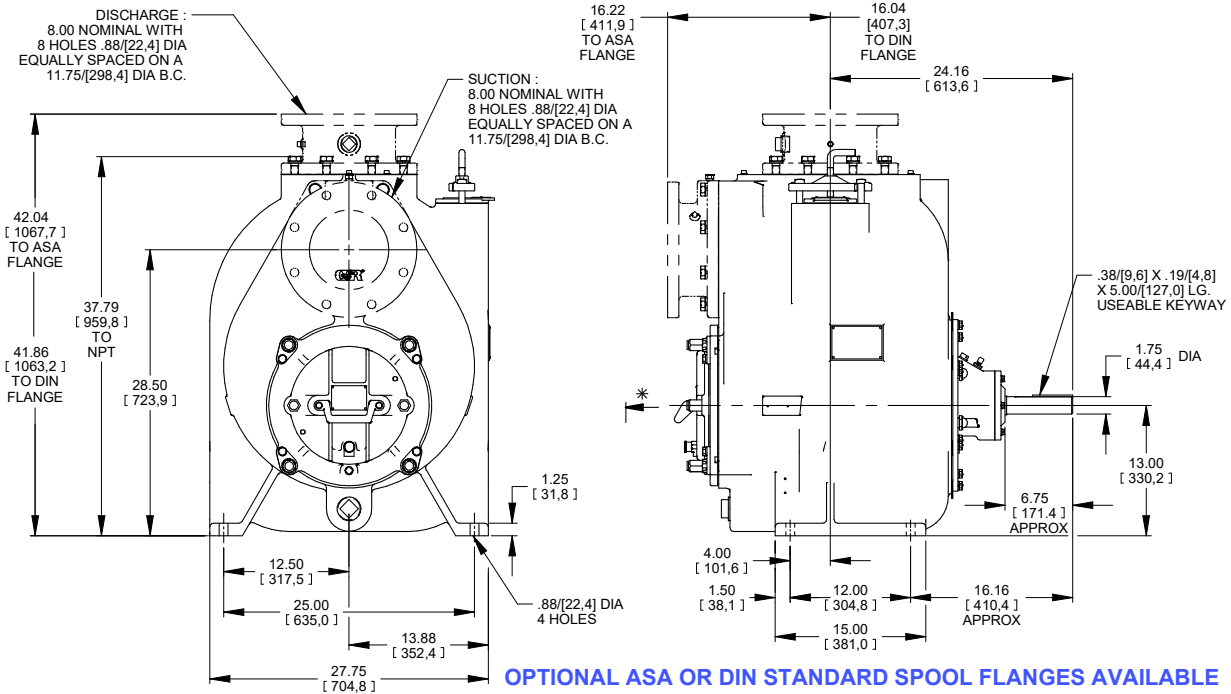
**Removable Rotating Assembly** – The entire rotating assembly can be removed without disturbing the pump volute or piping allowing the rotating assembly to be easily repaired or quickly replaced with a new ready to drop in assembly.

### APPROXIMATE DIMENSIONS AND WEIGHTS

<b>NET WEIGHT</b>	1330 LBS. (603 KG.)*
<b>SHIPPING WEIGHT</b>	1370 LBS. (621 KG.)*
<b>EXPORT CRATE</b>	47.9 CU. FT. (1,36 CU. M.)

\*Add 35 LBS. (15,9 KG.) w/each spool flange

★ 24.00/[609,6] RECOMMENDED FOR REMOVAL OF BACK COVER PLATE  
 T8AS-B / F / T8CSC-B / F - 13.00/[330,2] REQUIRED FOR REMOVAL OF BACK COVER PLATE  
 T8DS-B / F / T8ESC-B / F - 14.50/[368,3] REQUIRED FOR REMOVAL OF BACK COVER PLATE



OPTIONAL ASA OR DIN STANDARD SPOOL FLANGES AVAILABLE

