

# Self Priming Centrifugal Pump

*Super*  
**T SERIES**  
VARIOUS PATENTS APPLY

## Model T6B61S-B

### Size 6" x 6"



#### PUMP SPECIFICATIONS

**Size:** 6" x 6" (152 mm x 152 mm) NPT - Female.

**Casing:** Gray Iron 30.

Maximum Operating Pressure 81 psi (558 kPa).\*

**Semi-Open Type, Six Vane Impeller:** Stainless Steel CD4MCu.

Handles 1 1/4" (31,7 mm) Diameter Spherical Solids.

**Impeller Shaft:** Stainless Steel 17-4 PH.

**Replaceable Wear Plate:** Stainless Steel CD4MCu.

**Removable Adjustable Cover Plate:** Gray Iron 30.

**Removable Inspection Cover Plate:** Gray Iron 30; 20 lbs. (9,1 kg.).

**Seal Plate:** Stainless Steel 316.

**Flap Valve:** Neoprene <sup>W</sup>/Nylon and Steel Reinforcing.

**Bearing Housing:** Gray Iron 30.

**Radial Bearing:** Open Single Row Ball.

**Thrust Bearing:** Open Double Row Ball.

**Bearing and Seal Cavity Lubrication:** SAE 30 Non-Detergent Oil.

**Flanges:** Gray Iron 30.

**Gaskets:** Buna-N, Compressed Synthetic Fibers, PTFE, Vegetable Fiber, Cork, and Rubber.

**O-Rings:** Buna-N.

**Internal Wetted Hardware:** Stainless Steel 316.

**External Hardware:** Standard Plated Steel.

**Pressure Relief Valve:** Stainless Steel 316.

**Bearing and Seal Cavity Oil Level Sight Gauges.**

**Optional Equipment:** Automatic Air Release Valve. Metal Bellows Seal.

Stainless Steel CD4MCu Seal Plate. 120V/240V Casing Heater.

High Pump Temperature Shutdown Kit.

Gray Iron 30 Suction and Discharge Spool Flanges:

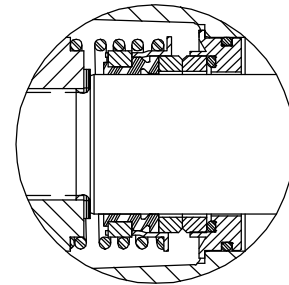
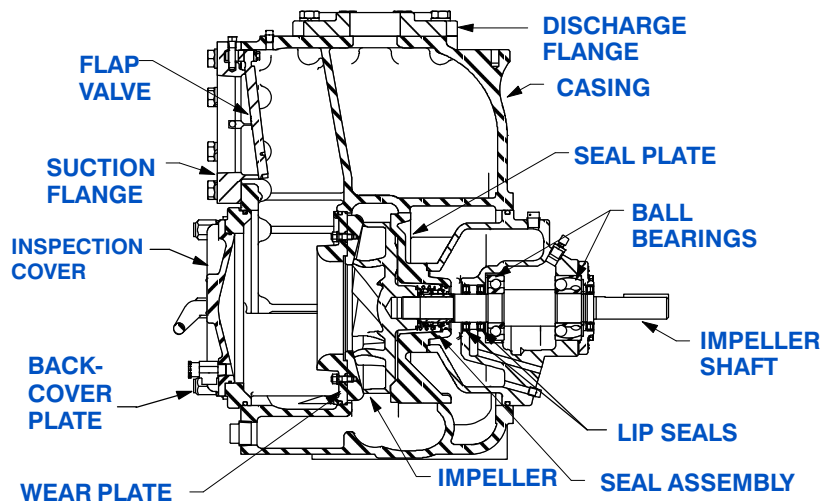
6" ASA (**Specify Model T6B61S-B /F**).

150 mm DIN 2527 (PN16) (**Specify Model T6B61S-B /FM**).

*\*Consult Factory for Applications Exceeding Maximum Pressure and/or Temperature Indicated.*



**Shown with Optional Suction & Discharge Spool Flanges (Available in ASA or DIN Standard Sizes).**



#### SEAL DETAIL

Mechanical, Oil-Lubricated, Double Floating, Self-Aligning. Silicon Carbide Rotating and Stationary Faces. Stainless Steel 316 Stationary Seat. Fluorocarbon Elastomers (DuPont Viton<sup>®</sup> or Equivalent). Stainless Steel 18-8 Cage and Spring. Maximum Temperature of Liquid Pumped, 160°F (71°C).\*

**GR**  
GORMAN-RUPP  
PUMPS

## GORMAN-RUPP PUMPS

www.grpumps.com

Specifications Subject to Change Without Notice

Printed in U.S.A.

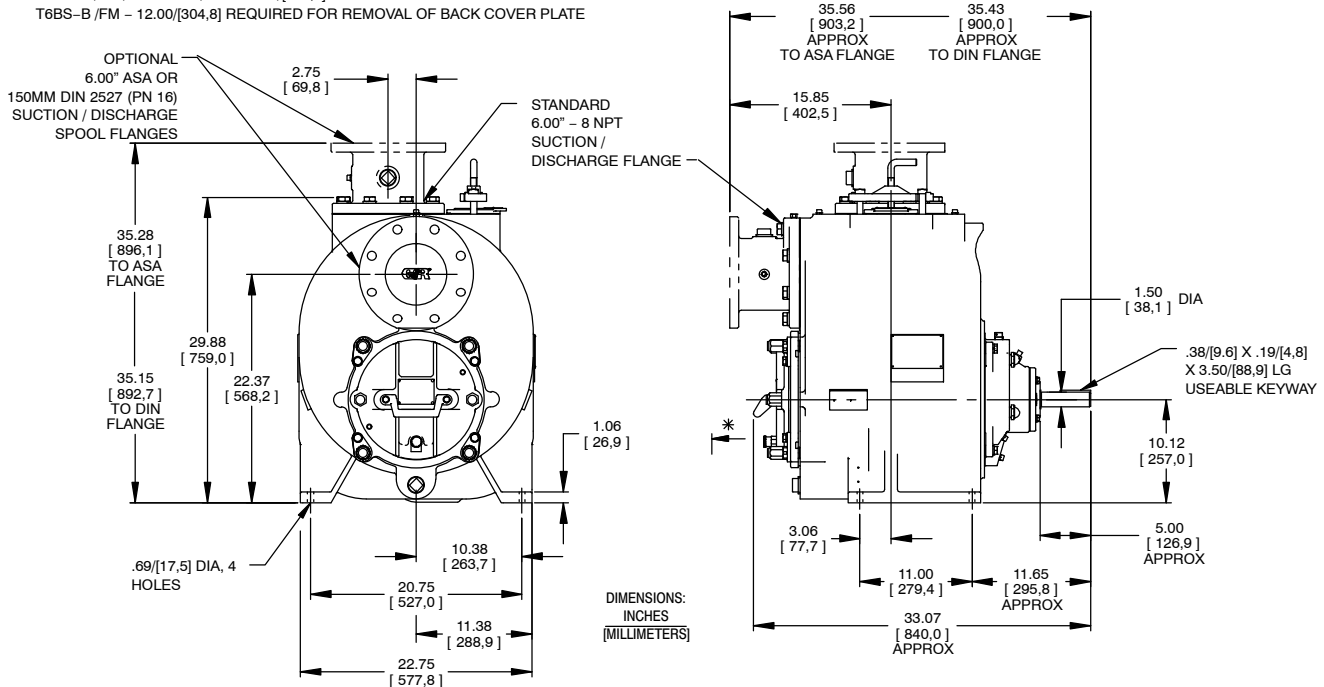
# Specification Data

## APPROXIMATE DIMENSIONS and WEIGHTS

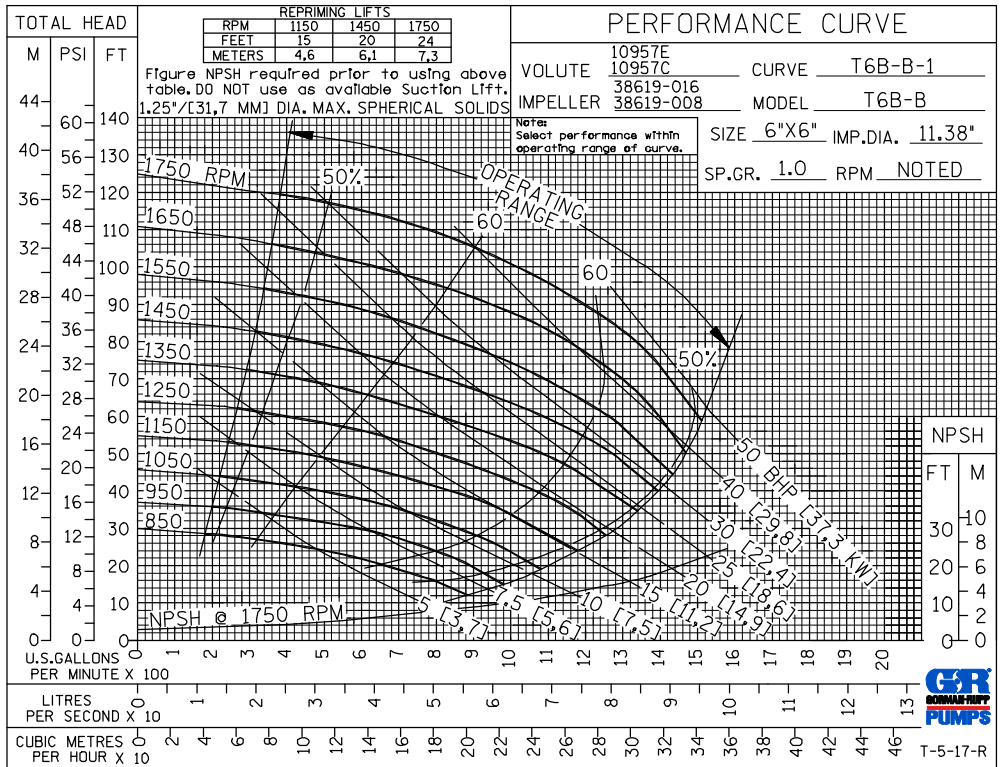
**NET WEIGHT:** 885 LBS. (401 KG.)\*  
**SHIPPING WEIGHT:** 945 LBS. (429 KG.)\*  
**EXPORT CRATE:** 32.5 CU. FT. (0,92 CU. M.)  
**\*ADD 25 LBS. (11,3 KG.) W/EACH SPOOL FLANGE**

SECTION 55, PAGE 2270

\* 18.00/[457,2] RECOMMENDED FOR REMOVAL OF BACK COVER PLATE  
 T6AS-B / FM / T6CSC-B / FM - 11.00/[279,4] REQUIRED FOR REMOVAL OF BACK COVER PLATE  
 T6BS-B / FM - 12.00/[304,8] REQUIRED FOR REMOVAL OF BACK COVER PLATE



**OPTIONAL ASA OR DIN STANDARD SUCTION & DISCHARGE SPOOL FLANGES AVAILABLE**



# GORMAN-RUPP PUMPS

www.grpumps.com

Specifications Subject to Change Without Notice

Printed in U.S.A.