

Stainless Steel Fitted Basic Pump

Self Priming Centrifugal Pump

Model T6A61S-B

Size 6" x 6"

Super
T SERIES

VARIOUS PATENTS APPLY

**PUMP SPECIFICATIONS****Size:** 6" x 6" (152 mm x 152 mm) NPT - Female.**Casing:** Gray Iron 30.

Maximum Operating Pressure 79 psi (545 kPa).*

Semi-Open Type, Two Vane Impeller: Stainless Steel 316.

Handles 3" (76,2 mm) Diameter Spherical Solids.

Impeller Shaft: Stainless Steel 17-4 PH.**Replaceable Wear Plate:** Stainless Steel 316.**Adjustable Back Cover Plate:** Gray Iron 30.**Removable Inspection Cover Plate:** Gray Iron 30; 20 lbs. (9,1 kg.).**Flap Valve:** Neoprene ^w/Nylon and Steel Reinforcing.**Seal Plate:** Stainless Steel 316.**Bearing Housing:** Gray Iron 30.**Radial Bearing:** Open Single Row Ball.**Thrust Bearing:** Open Double Row Ball.**Bearing and Seal Cavity Lubrication:** SAE 30 Non-Detergent Oil.**Flanges:** Gray Iron 30.**Gaskets:** Buna-N, Compressed Synthetic Fibers, PTFE, Vegetable Fiber, Cork, and Rubber.**O-Rings:** Buna-N.**Internal Wetted Hardware:** Stainless Steel 316.**External Hardware:** Standard Plated Steel.**Pressure Relief Valve:** Stainless Steel 316.**Bearing and Seal Cavity Oil Level Sight Gauges.****Optional Equipment:** Automatic Air Release Valve. Metal Bellows Seal.

Stainless Steel CD4MCu Impeller, Seal Plate and Wear Plate.

120V/240V Casing Heater. High Pump Temperature Shutdown Kit.

Eradicator Solids Management System. Gray Iron 30 Suction and

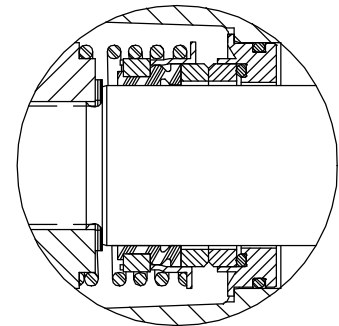
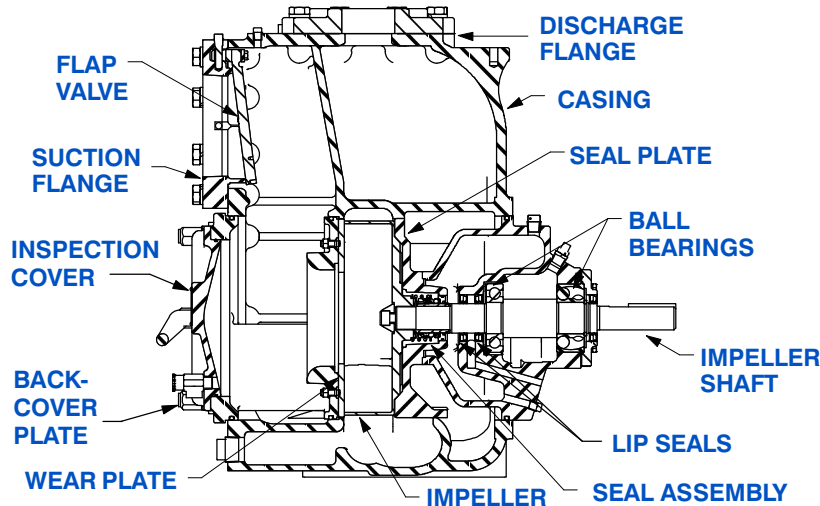
Discharge Spool Flanges:

6" ASA (**Specify Model T6A61S-B /F**).150 mm DIN 2527 (PN16) (**Specify Model T6A61S-B /FM**).

*Consult Factory for Applications Exceeding Maximum Pressure and/or Temperature Indicated.



Shown with Optional Suction and Discharge Spool Flanges (Available in ASA or DIN Standard Sizes).

**SEAL DETAIL**

Mechanical, Oil-Lubricated, Double Floating, Self-Aligning. Silicon Carbide Rotating and Stationary Faces. Stainless Steel 316 Stationary Seat. Fluorocarbon Elastomers (DuPont Viton[®] or Equivalent). Stainless Steel 18-8 Cage and Spring. Maximum Temperature of Liquid Pumped, 160°F (71°C).*



GORMAN-RUPP PUMPS

www.grpumps.com

Specifications Subject to Change Without Notice

Printed in U.S.A.

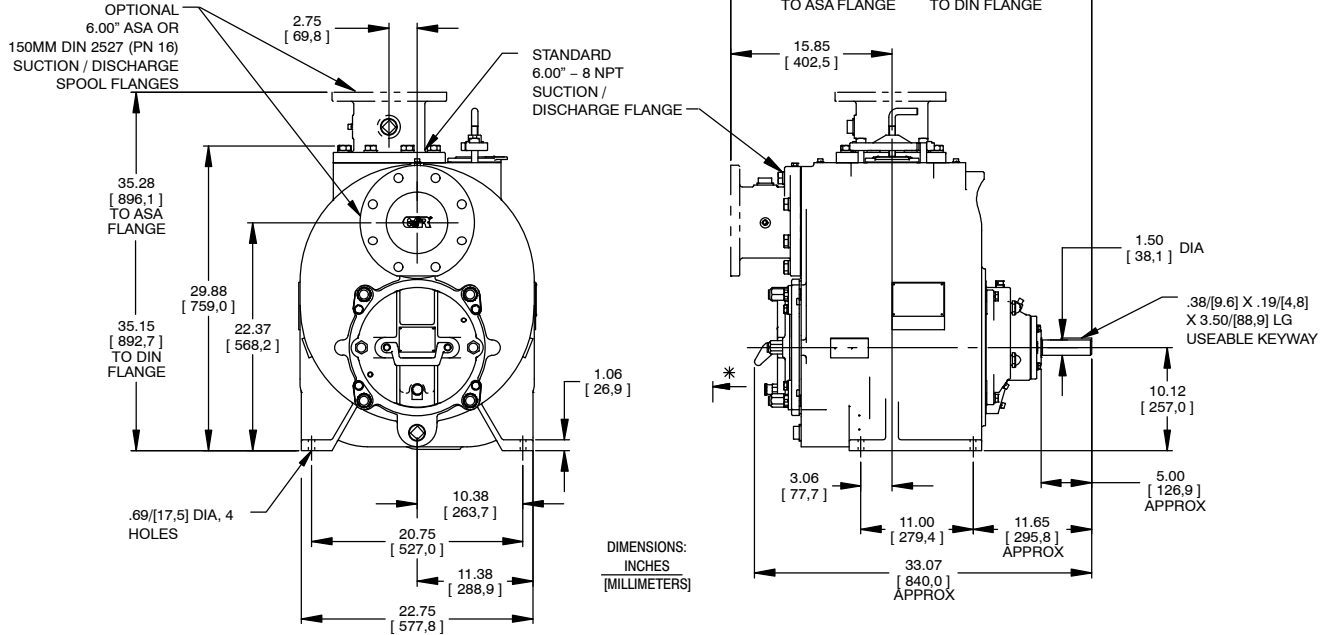
Specification Data

NET WEIGHT: 885 LBS. (401 KG.)*
SHIPPING WEIGHT: 945 LBS. (429 KG.)*
EXPORT CRATE: 32.5 CU. FT. (0,92 CU. M.)
***ADD 25 LBS. (11,3 KG.) W/EACH SPOOL FLANGE**

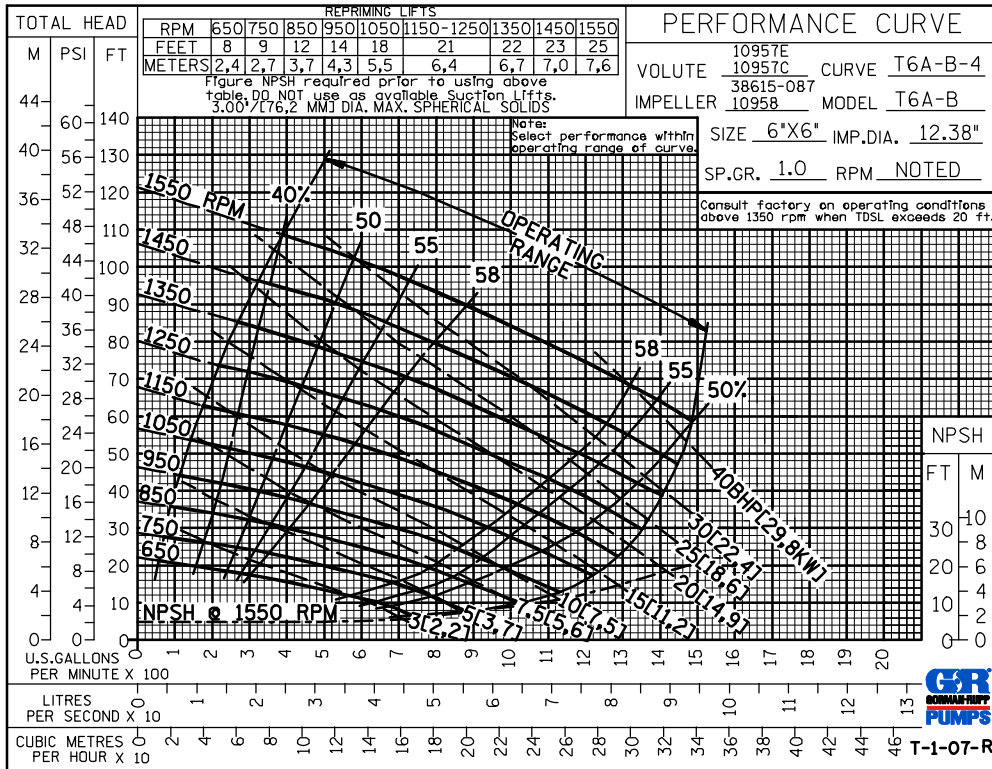
APPROXIMATE DIMENSIONS and WEIGHTS

SECTION 55, PAGE 2220

* 18.00/[457.2] RECOMMENDED FOR REMOVAL OF BACK COVER PLATE
 T6AS-B /FM / T6CSC-B /FM - 11.00/[279.4] REQUIRED FOR REMOVAL OF BACK COVER PLATE
 T6BS-B /FM - 12.00/[304.8] REQUIRED FOR REMOVAL OF BACK COVER PLATE



OPTIONAL ASA OR DIN STANDARD SUCTION & DISCHARGE SPOOL FLANGES AVAILABLE



GORMAN-RUPP PUMPS

www.grpumps.com

Specifications Subject to Change Without Notice

Printed in U.S.A.