

**SPECIFICATION DATA**



**BASIC PUMP  
EQUIPPED WITH**



**SELF-PRIMING CENTRIFUGAL PUMP**

**Model: T2E60SC-B**

*Various Patents Apply*

**Pump Specifications**

<b>Size</b>	2" x 2" (51 mm x 51 mm) NPT - Female
<b>Impeller Type</b>	Semi-Open, Two Vane
<b>Solids-Handling Capability</b>	.75" (19,1 mm) Spherical Diameter
<b>Seal Type</b>	Mechanical, Oil-Lubricated, Double Floating, Self-Aligning
<b>Radial Bearing</b>	Open Single Row Ball
<b>Thrust Bearing</b>	Open Double Row Ball
<b>Bearing and Seal Cavity Lubrication</b>	SAE 30 Non-Detergent Oil
<b>Maximum Operating Pressure</b>	98 psi (676 kPa)*
<b>Max Temp of Liquid Pumped</b>	160°F (71°C).*

**Pump Materials**

<b>Casing</b>	Gray Iron 30
<b>Impeller</b>	Ductile Iron 65-45-12
<b>Impeller Shaft</b>	Alloy Steel 4150
<b>Shaft Sleeve</b>	Alloy Steel 4130
<b>Seal: Stationary Face</b>	Silicon Carbide
<b>Rotating Face</b>	Silicon Carbide
<b>Elastomer</b>	Fluorocarbon FKM, (Viton® or Equivalent)
<b>Replaceable Self Cleaning Wear Plate</b>	Carbon Steel ASTM A6
<b>Removable Adjustable Cover Plate</b>	Gray Iron 30
<b>Removable Inspection Cover Plate</b>	Gray Iron 30 – 3.2 lbs. (1,5 kg.)
<b>Flap Valve</b>	Neoprene with Nylon and Steel Reinforcing
<b>Seal Plate</b>	Gray Iron 30
<b>Bearing Housing</b>	Gray Iron 30
<b>Flanges</b>	Gray Iron 30
<b>Gaskets</b>	Buna-N, Compressed Synthetic Fiber, Vegetable Fiber, PTFE, Cork and Rubber
<b>O-Rings</b>	Buna-N, and Fluorocarbon (Viton® or Equivalent)
<b>Hardware</b>	Standard Plated Steel

*\*Consult Factory for Applications Exceeding Maximum Pressure and/or Temperature Indicated.*

**Standard Equipment:** Brass Pressure Relief Valve, Bearing and Seal Cavity Oil Level Sight Gauges. Eradicator Solids Reduction System with Self-Cleaning Wearplate.

**Optional Equipment:** Automatic Air Release Valve, 120V/240V Casing Heater, High Pump Temperature Shutdown Kit, Drain Kit, Gauge Kit.

Suction and Discharge Spool Flanges:

2" ASA (Specify Model T2E60SC-B /F)

50 mm DIN 2527 – PN 16 (Specify Model T2E60SC-B /FM).



**Shown with Optional Suction and Discharge Spool Flanges (Available in ASA or DIN Standard Sizes).**

**Super T Series With Eradicator Features and Benefits**

**Easy To Service And Maintain** - Pump is mounted above liquid being pumped with only the suction line down in liquid.

**Dual Bearing Protection** – An atmospheric barrier along with two lip seals provide additional protection of the pump bearings (not available on 2" models).

**Inspection Cover** – Patented, lightweight inspection cover for easy access to the impeller without removing the entire backcover plate or piping. (2" – 8" models).

**Self-Cleaning Wearplate** - Incorporating a number of notches and grooves, as well as a revolutionary tooth (tooth used on T3 – T10 models), that helps break up stringy materials and pass them through the pump without impacting performance or interrupting service. This greatly reduces troublesome clogging and expensive downtime.

**5 Year Super T Series Warranty**

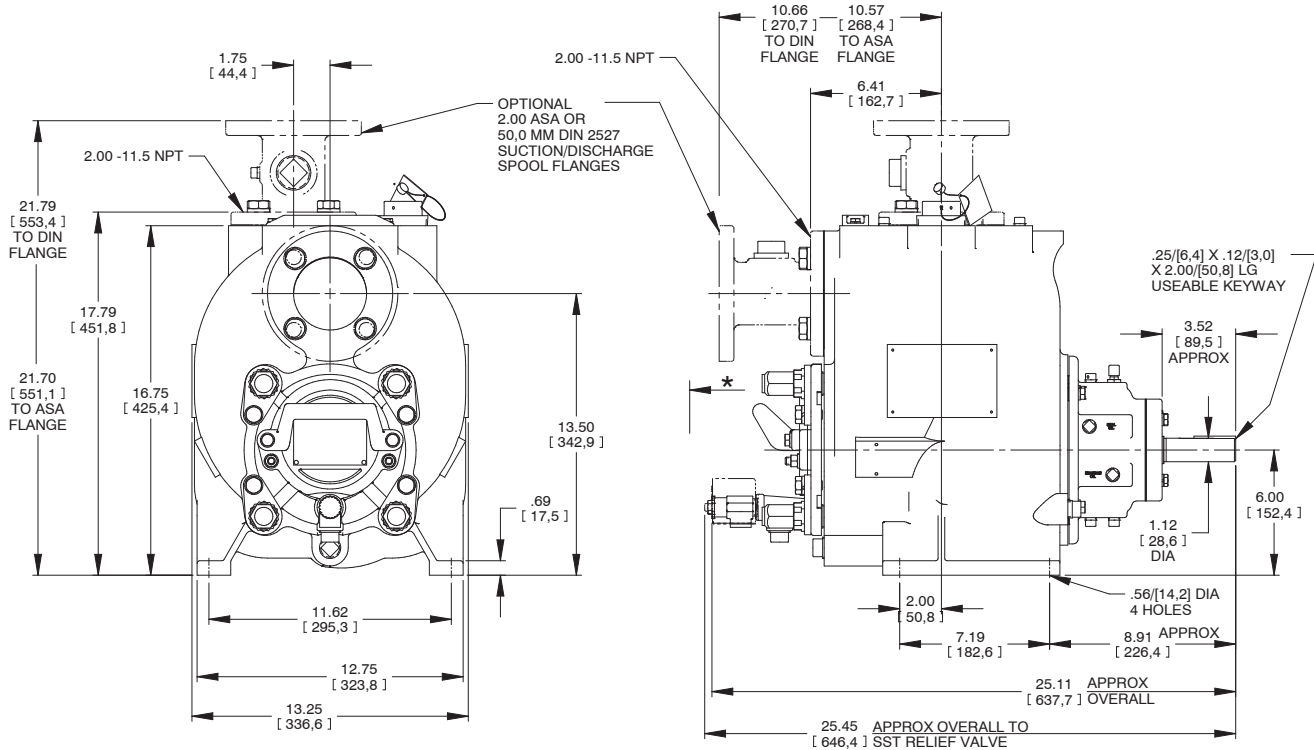
**Up To 3" Diameter Spherical Solids Handling** (4" – 10" models).

**Removable Rotating Assembly** – The entire rotating assembly can be removed without disturbing the pump volute or piping allowing the rotating assembly to be easily repaired or quickly replaced with a new ready to drop in assembly.

### APPROXIMATE DIMENSIONS AND WEIGHTS

<b>NET WEIGHT</b>	223 LBS. (101 KG.)*
<b>SHIPPING WEIGHT</b>	236 LBS. (107 KG.)*
<b>EXPORT CRATE</b>	7.4 CU. FT. (0,21 CU. M.)

\*Add 10 LBS. (4,5 KG.) w/each spool flange



\* 18.00/[457,2] RECOMMENDED FOR REMOVAL OF BACK COVER PLATE  
 T2CSC-B - 8.50/[215,9] REQUIRED FOR REMOVAL OF BACK COVER PLATE  
 T2DS-B / T2ESC-B - 9.50 / [241,3] REQUIRED FOR REMOVAL OF BACK COVER PLATE

