

Self Priming Centrifugal Pump

Super
TSERIES

VARIOUS PATENTS APPLY

Model T2D71S-B

Size 2" x 2"



PUMP SPECIFICATIONS

Size: 2" x 2" (51 mm x 51 mm) NPT - Female.

Casing: Gray Iron 30.

Maximum Operating Pressure 102 psi (703 kPa).*

Semi-Open Type, Two Vane Impeller: G R Hard Iron.

Handles 3/4" (19,1 mm) Diameter Spherical Solids.

Impeller Shaft: Alloy Steel 4150.

Shaft Sleeve: Alloy Steel 4130.

Replaceable Wear Plate: Hardened Alloy Steel.

Removable Back Cover Plate: Gray Iron 30.

Removable Inspection Cover Plate: Gray Iron 30; 3.2 lbs. (1,45 kg.).

Flap Valve: Neoprene w/Nylon and Steel Reinforcing.

Seal Plate: G R Hard Iron.

Bearing Housing: Gray Iron 30.

Radial Bearings: Open Single Row Ball.

Thrust Bearings: Open Double Row Ball.

Bearing and Seal Cavity Lubrication: SAE 30 Non-Detergent Oil.

Flanges: Gray Iron 30.

Gaskets: Buna-N w/Compressed Synthetic Fibers, Vegetable Fiber, PTFE, Cork and Rubber.

O-Rings: Buna-N, Fluorocarbon (DuPont Viton® or Equivalent).

Hardware: Standard Plated Steel.

Brass Pressure Relief Valve.

Bearing and Seal Cavity Oil Level Sight Gauges.

Optional Equipment: Automatic Air Release Valve. 120V/240V Casing Heater. High Pump Temperature Shutdown Kit. Gray Iron 30 Suction and Discharge Spool Flanges:

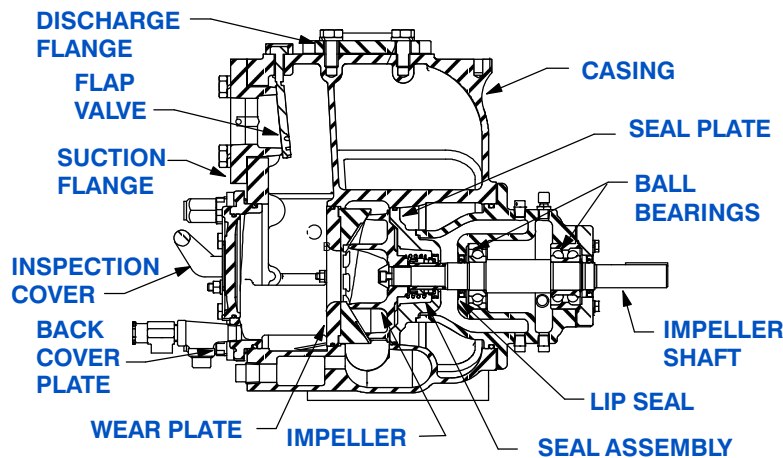
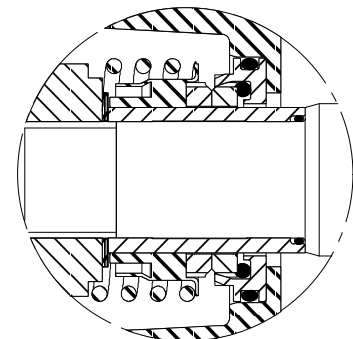
2" ASA (**Specify Model T2D71S-B /F**).

50 mm DIN 2527 (PN 16) (**Specify Model T2D71S-B /FM**).

**Consult Factory for Applications Exceeding Maximum Pressure and/or Temperature Indicated.*



Shown with Optional Suction & Discharge Spool Flanges (Available in ASA or DIN Standard Sizes).



SEAL DETAIL

Mechanical, Oil-Lubricated, Double Floating, Self-Aligning. Silicon Carbide Rotating and Stationary Faces. Stainless Steel 316 Stationary Seat. Fluorocarbon Elastomers (DuPont Viton® or Equivalent). Stainless Steel 18-8 Cage and Spring. Maximum Temperature of Liquid Pumped, 160°F (71°C).*

GR
GORMAN-RUPP
PUMPS

GORMAN-RUPP PUMPS

www.grpumps.com

Specifications Subject to Change Without Notice

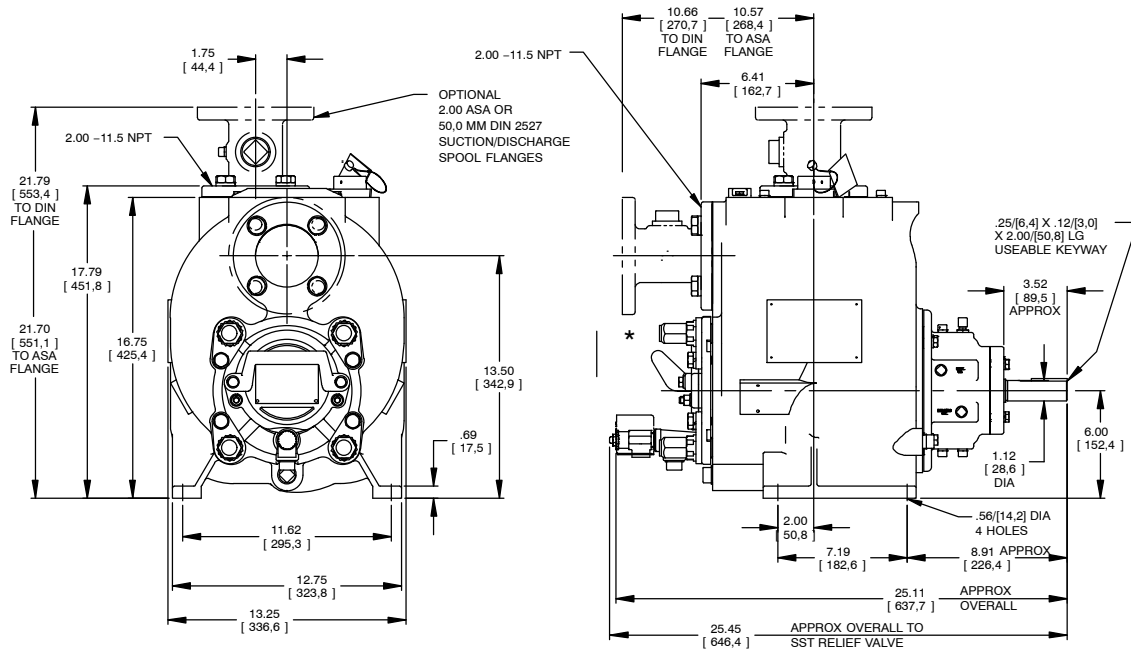
Printed in U.S.A.

Specification Data

SECTION 55, PAGE 1942

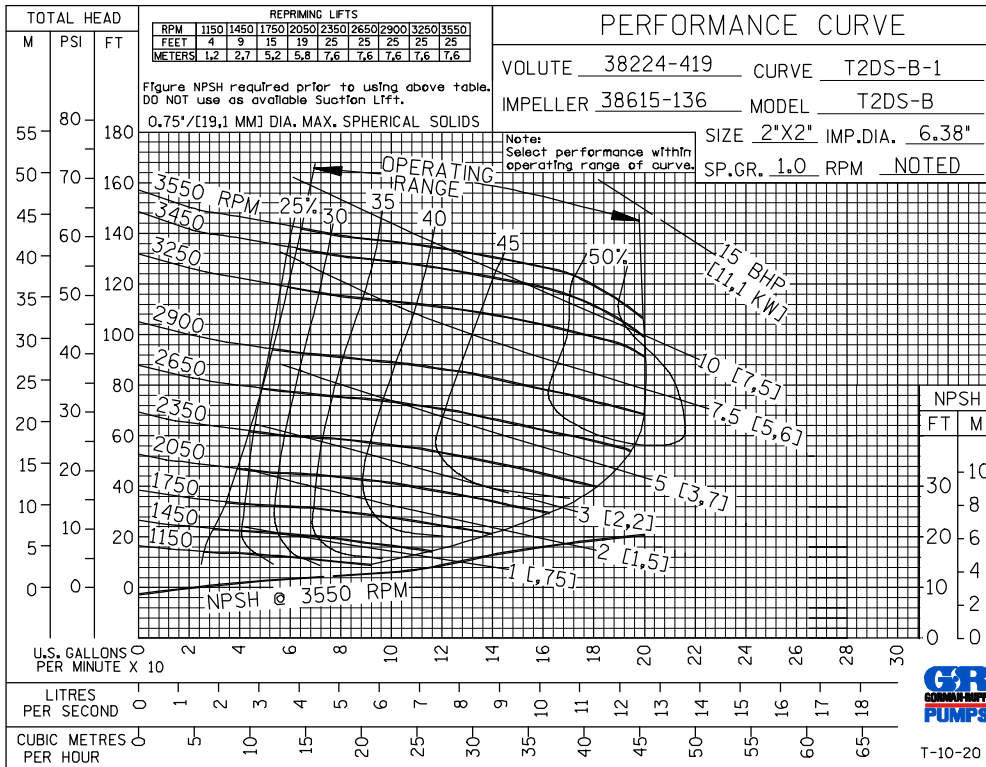
APPROXIMATE DIMENSIONS and WEIGHTS

NET WEIGHT: 240 LBS. (109 KG.)*
SHIPPING WEIGHT: 252 LBS. (114 KG.)*
EXPORT CRATE: 6.4 CU. FT. (0,18 CU. M.)
***ADD 8 LBS. (3,6 KG.) W/EACH SPOOL FLANGE**



* 18.00/[457,2] RECOMMENDED FOR REMOVAL OF BACK COVER PLATE
 T2CSC-B - 8.50/[215,9] REQUIRED FOR REMOVAL OF BACK COVER PLATE
 T2DS-B / T2ESC-B - 9.50 / [241,3] REQUIRED FOR REMOVAL OF BACK COVER PLATE

T2CSC-B
 T2DS-B
 T2ESC-B



GORMAN-RUPP PUMPS

www.grpumps.com

Specifications Subject to Change Without Notice

Printed in U.S.A.