

Equipped With  
**ERADICATOR**  
Solids Management System

**Super  
T SERIES**

VARIOUS PATENTS APPLY

# Self Priming Centrifugal Pump

## Model T2C3SC-B

Size 2" x 2"



### PUMP SPECIFICATIONS

**Size:** 2" x 2" (51 mm x 51 mm) NPT Female.

**Casing:** Gray Iron 30.

Maximum Operating Pressure 79 psi (545 kPa).\*

**Semi-Open Type, Two Vane Impeller:** Ductile Iron 65-45-12.

Handles 1 1/2" (38,1 mm) Diameter Spherical Solids.

**Impeller Shaft:** Alloy Steel 4150.

**Shaft Sleeve:** Alloy Steel 4130.

**Replaceable Self-Cleaning Wear Plate:** Carbon Steel ASTM A36.

**Adjustable Back Cover Plate:** Gray Iron 30.

**Removable Inspection Cover Plate:** Gray Iron 30; 3.2 lbs. (1,45 kg.).

**Flap Valve:** Neoprene w/Nylon and Steel Reinforcing.

**Seal Plate:** Gray Iron 30.

**Bearing Housing:** Gray Iron 30.

**Radial Bearing:** Open Single Row Ball.

**Thrust Bearing:** Open Double Row Ball.

**Bearing and Seal Cavity Lubrication:** SAE 30 Non-Detergent Oil.

**Suction Flange:** Gray Iron 30.

**Gaskets:** Buna-N w/Compressed Synthetic Fibers, Vegetable Fiber, PTFE, Cork, and Rubber.

**O-Rings:** Buna-N.

**Hardware:** Standard Plated Steel.

**Brass Pressure Relief Valve.**

**Bearing and Seal Cavity Oil Level Sight Gauges.**

**Optional Equipment:** Metal Bellows Seal. Automatic Air Release Valve.

120V/240V Casing Heater. High Pump Temperature Shutdown Kit. 3"

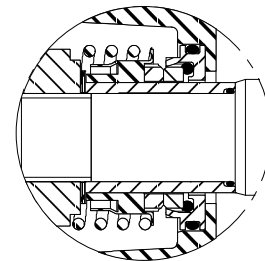
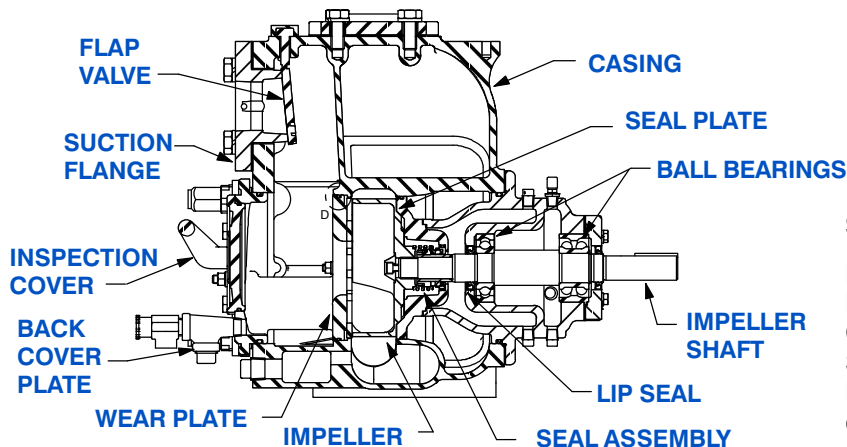
NPT Gray Iron 30 Discharge Flange.

Gray Iron 30 Suction and Discharge Spool Flanges:

2" ASA (**Specify Model T2C3SC-B /F**).

50 mm DIN 2527 (PN 16) (**Specify Model T2C3SC-B /FM**).

\*Consult Factory for Applications Exceeding Maximum Pressure and/or Temperature Indicated.



### SEAL SPECIFICATIONS

Mechanical, Oil-Lubricated, Double Floating, Self-Aligning. Tungsten Titanium Carbide Rotating and Stationary Faces. Stainless Steel 316 Stationary Seat. Fluorocarbon Elastomers (DuPont Viton® or Equivalent). Stainless Steel 18-8 Cage and Spring. Maximum Temperature of Liquid Pumped, 160°F (71°C).\*



GORMAN-RUPP PUMPS

www.grpumps.com

Specifications Subject to Change Without Notice

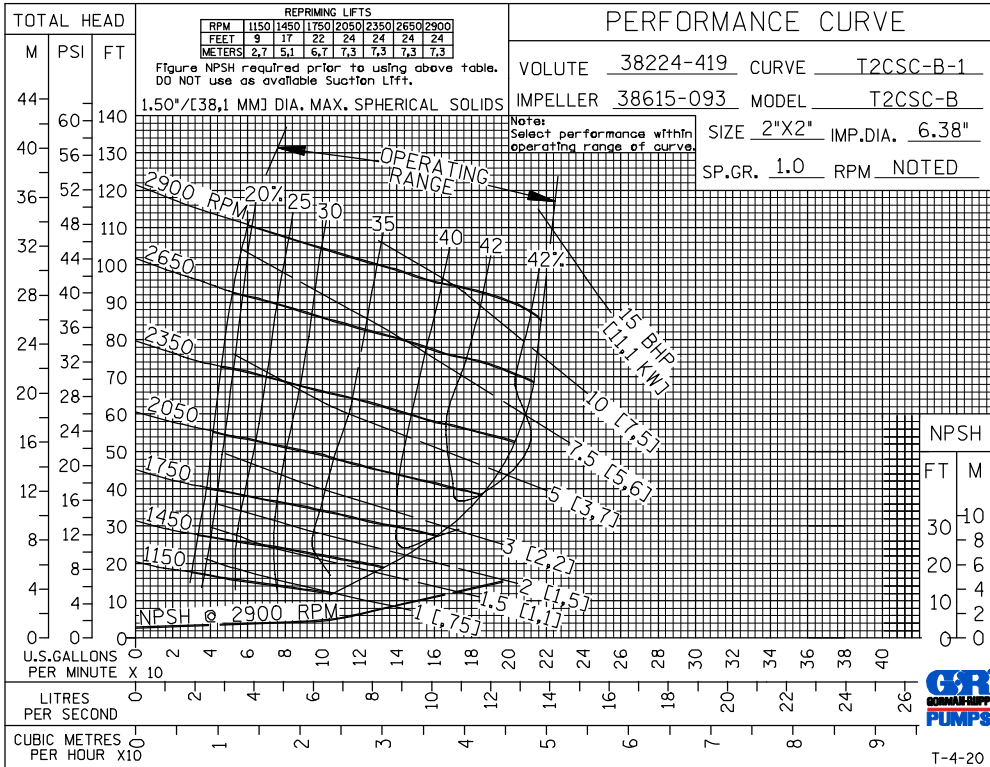
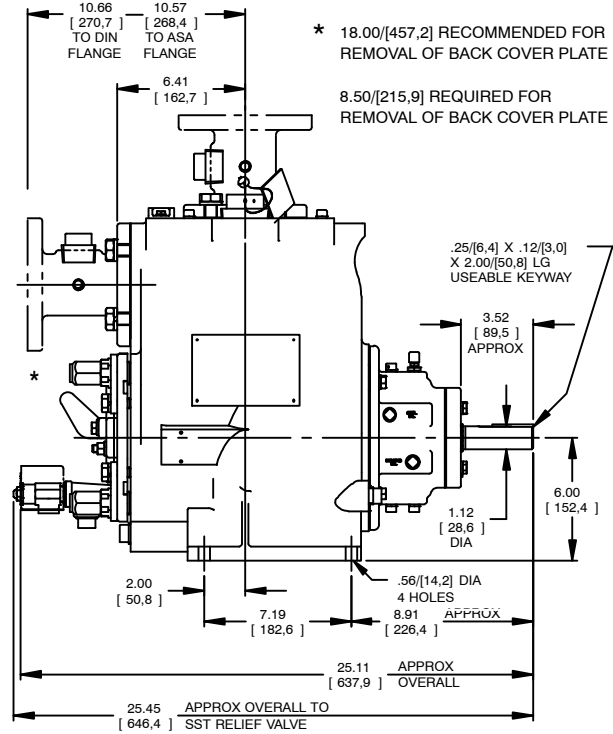
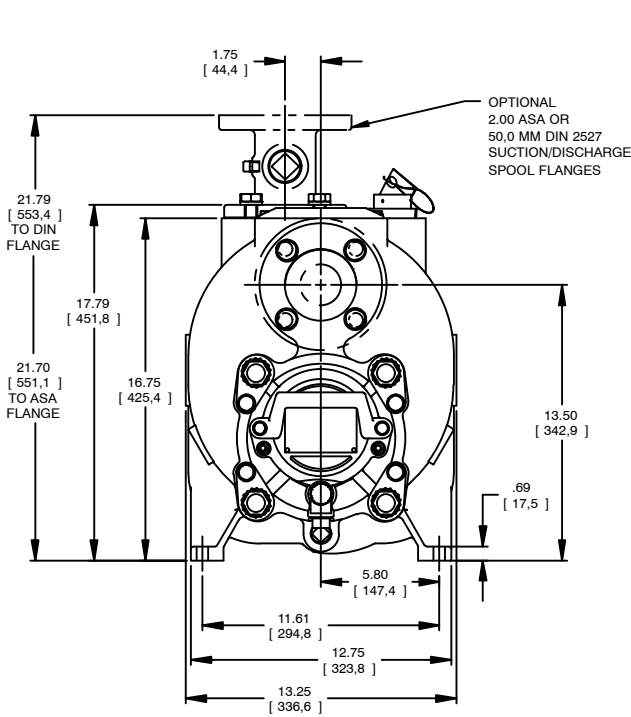
Printed in U.S.A.

**Specification Data**

SECTION 55, PAGE 1900

**APPROXIMATE DIMENSIONS and WEIGHTS**

**NET WEIGHT: 220 LBS. (100 KG.)\***  
**SHIPPING WEIGHT: 230 LBS. (104 KG.)\***  
**EXPORT CRATE: 7.9 CU. FT. (0,22 CU. M.)**  
**\*ADD 8 LBS. (3,6 KG.) W/EACH SPOOL FLANGE**



**GORMAN-RUPP PUMPS**

www.grpumps.com

Specifications Subject to Change Without Notice

Printed in U.S.A.