



Stainless Steel Self Priming Centrifugal Pump

Basic Pedestal Model 16A59-B Size 6" x 6"

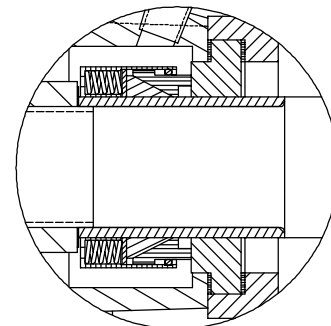
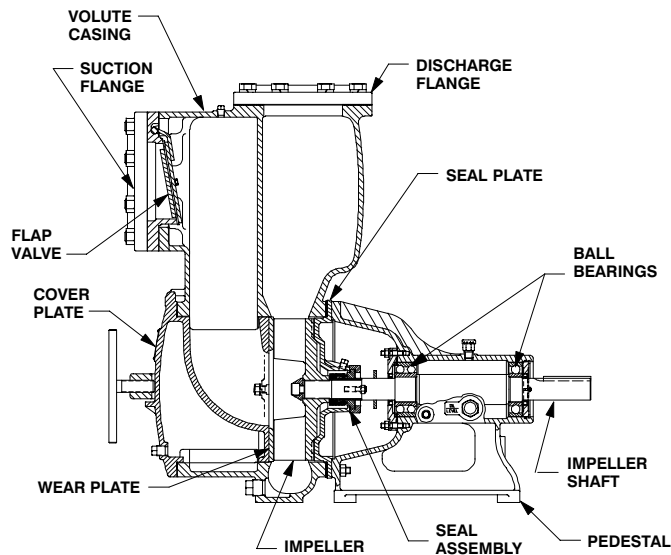
PUMP SPECIFICATIONS

Size: 6" x 6" NPT (152 mm x 152 mm) - Female.
Casing: Stainless Steel Alloy 20. Maximum Operating Pressure 81 psi (5,7 kg/cm²).*
Open Type, Two Vane Impeller: Stainless Steel Alloy 20. Handles 2 1/2" (63,5 mm) Diameter Spherical Solids.
Impeller Shaft: Stainless Steel Alloy 20.
Replaceable Wear Plate: Stainless Steel Alloy 20.
Removable Cover Plate: Stainless Steel Alloy 20; 64 lbs. (29 kg).
Pedestal: Gray Iron No. 30.
Seal Plate: Stainless Steel Alloy 20.
Shaft Sleeve: Stainless Steel Alloy 20.
Flap Valve: Fluorocarbon Elastomers (DuPont Viton® or Equivalent); Stainless Steel Alloy 20.
Radial Bearing: Open Single Ball.
Thrust Bearing: Open Double Ball.
Bearing Lubrication: Oil.
Flanges: Stainless Steel Alloy 20.
Gaskets: PTFE and Fluorocarbon (DuPont Viton® or Equivalent).
Internal Wetted Hardware: Stainless Steel Alloy 20.
External Hardware: Stainless Steel No. 316 and Standard Plated Steel.

Optional Equipment: Consult Factory.

16A59-B SEAL DETAIL

Type 9, Mechanical, Self-Lubricated. Silicon Carbide Rotating and Stationary Faces. PTFE Elastomers. Stainless Steel Alloy 20 Cage and Spring. Maximum Temperature of Liquid Pumped, 160°F (71°C).*



*Consult Factory for Applications Exceeding Maximum Pressure and/or Temperature Indicated.



THE GORMAN-RUPP COMPANY • MANSFIELD, OHIO

GORMAN-RUPP OF CANADA LIMITED • ST. THOMAS, ONTARIO, CANADA

Specifications Subject to Change Without Notice

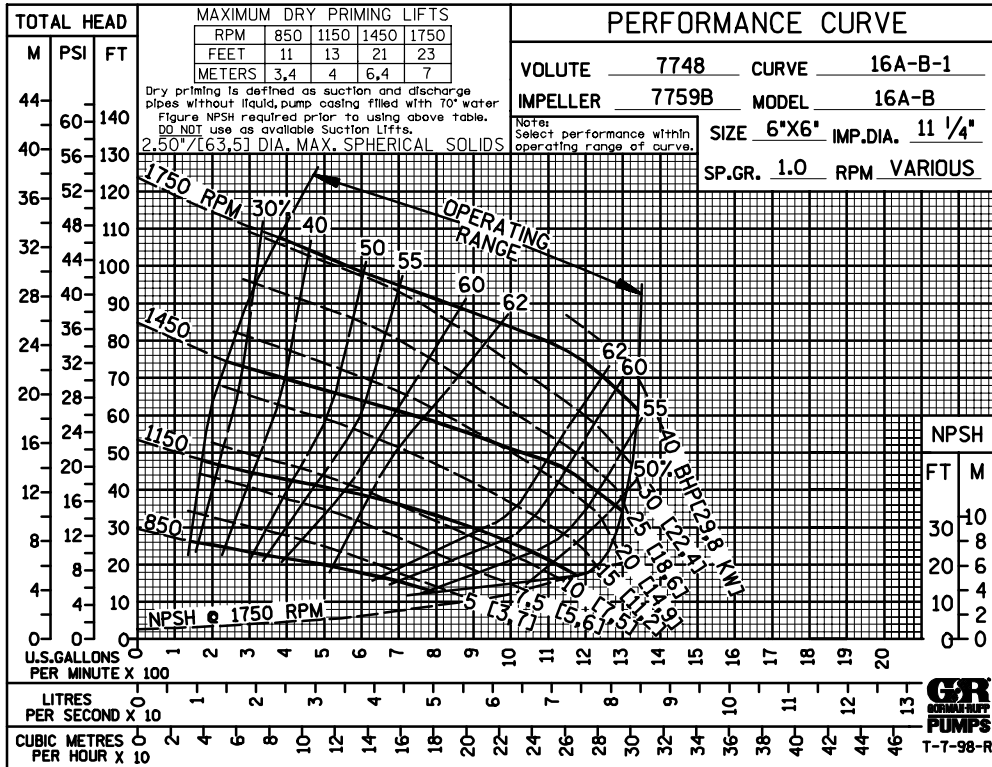
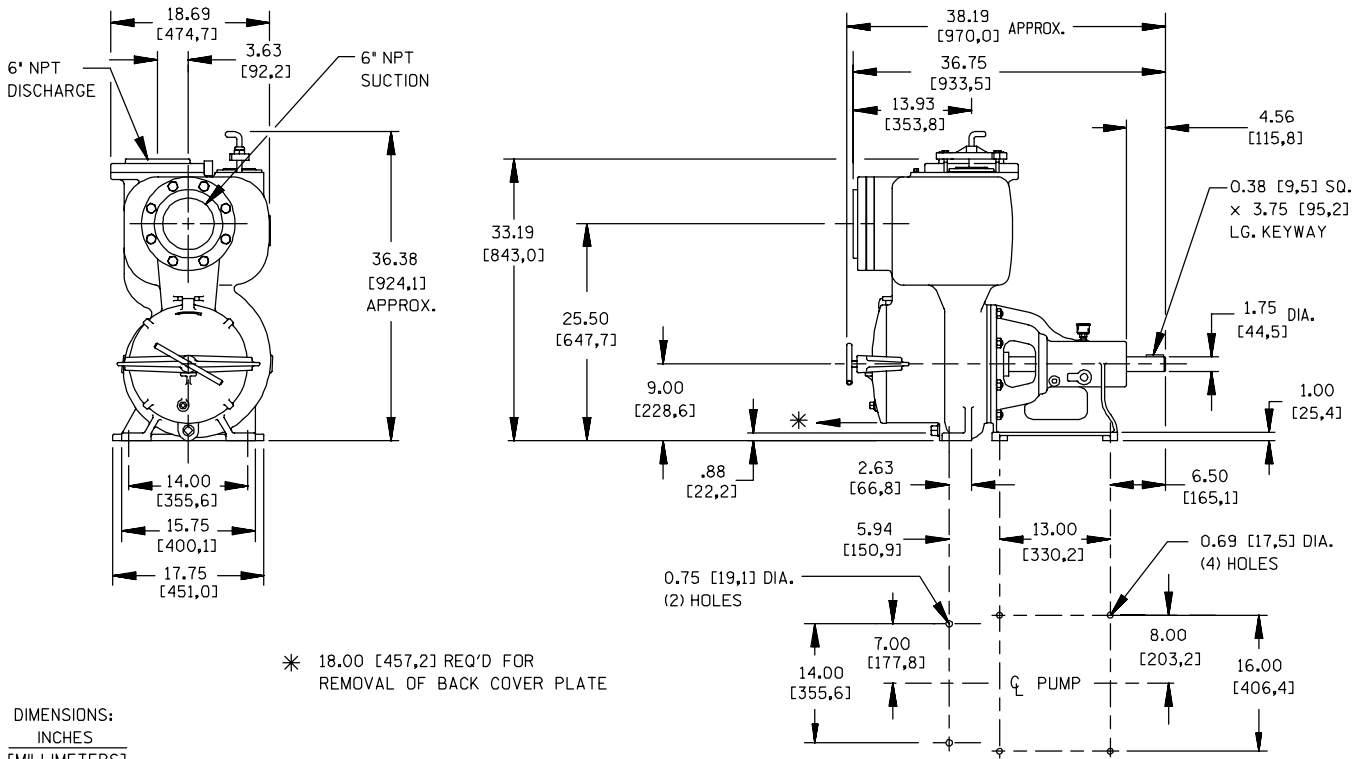
Printed in U.S.A.

Specification Data

SECTION 55, PAGE 806

APPROXIMATE
DIMENSIONS and WEIGHTS

NET WEIGHT: 735 LBS. (318 KG.)
SHIPPING WEIGHT: 770 LBS. (355 KG.)
EXPORT CRATE SIZE: 27.8 CU. FT. (0,78 CU. M.)



THE GORMAN-RUPP COMPANY • MANSFIELD, OHIO

GORMAN-RUPP OF CANADA LIMITED • ST. THOMAS, ONTARIO, CANADA

Specifications Subject to Change Without Notice

Printed in U.S.A.