



# Self Priming Centrifugal Pump Model 14A65-B

## Size 4" x 4"

### PUMP SPECIFICATIONS

**Size:** 4" x 4" (102 mm x 102 mm) NPT - Female.

**Casing:** Stainless Steel CD4MCu.

Maximum Operating Pressure 81 psi (558 kPa).\*

**Semi-Open Type, Two Vane Impeller:** Stainless Steel CD4MCu.

Handles 1 13/16" (46 mm) Diameter Spherical Solids.

**Impeller Shaft:** Stainless Steel 17-4PH.

**Shaft Sleeve:** Stainless Steel 17-4PH.

**Replaceable Wear Plate:** Stainless Steel CD4MCu.

**Removable Cover Plate:** Stainless Steel CD4MCu; 25 lbs. (11 kg).

**Pedestal:** Gray Iron 30.

**Seal Plate:** Stainless Steel CD4MCu.

**Flap Valve:** Fluorocarbon Elastomers (DuPont Viton® or Equivalent) and Stainless Steel CD4MCu.

**Radial Bearing:** Open Single Row Ball.

**Thrust Bearing:** Open Double Row Ball.

**Bearing Lubrication:** SAE 30 Non-Detergent Oil.

**Flanges:** Stainless Steel CD4MCu.

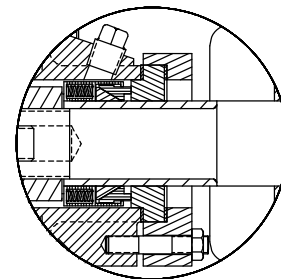
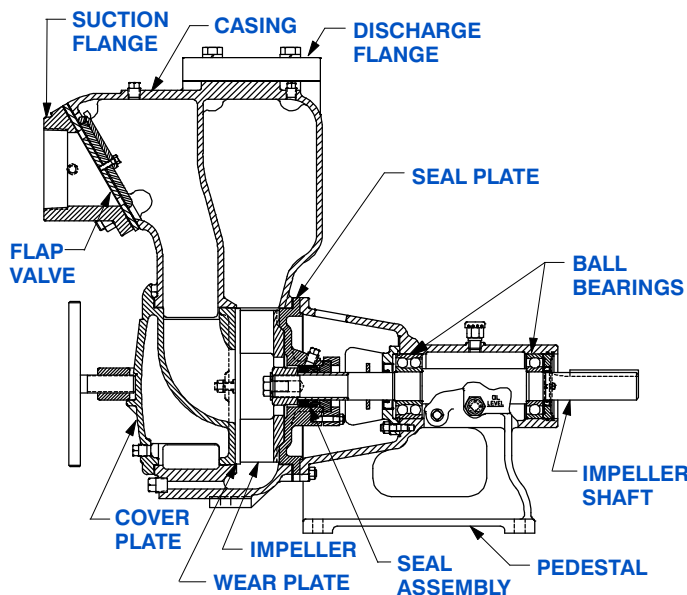
**Gaskets:** PTFE and Fluorocarbon (DuPont Teflon® and Viton® or Equivalents).

**Internal Wetted Hardware:** Stainless Steel 316.

**External Hardware:** Standard Plated Steel; Stainless Steel 316.

**Optional Equipment:** Consult Factory.

*\*Consult Factory for Applications Exceeding Maximum Pressure and/or Temperature Indicated.*



### SEAL DETAIL

Type 9, Mechanical, Self-Lubricated. Silicon Carbide Rotating and Stationary Faces. PTFE Elastomers (DuPont Teflon® or Equivalent). Stainless Steel Alloy 20 Cage and Spring. Maximum Temperature of Liquid Pumped, 160°F (71°C).\*



THE GORMAN-RUPP COMPANY • MANSFIELD, OHIO

GORMAN-RUPP OF CANADA LIMITED • ST. THOMAS, ONTARIO, CANADA

www.grpumps.com

Specifications Subject to Change Without Notice

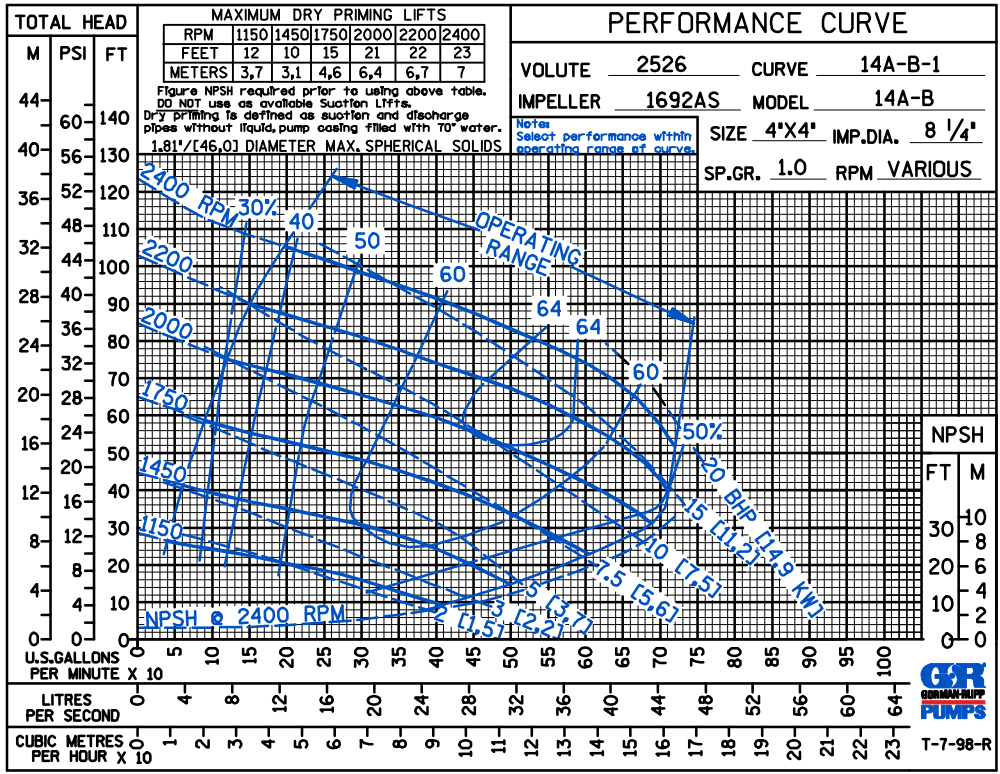
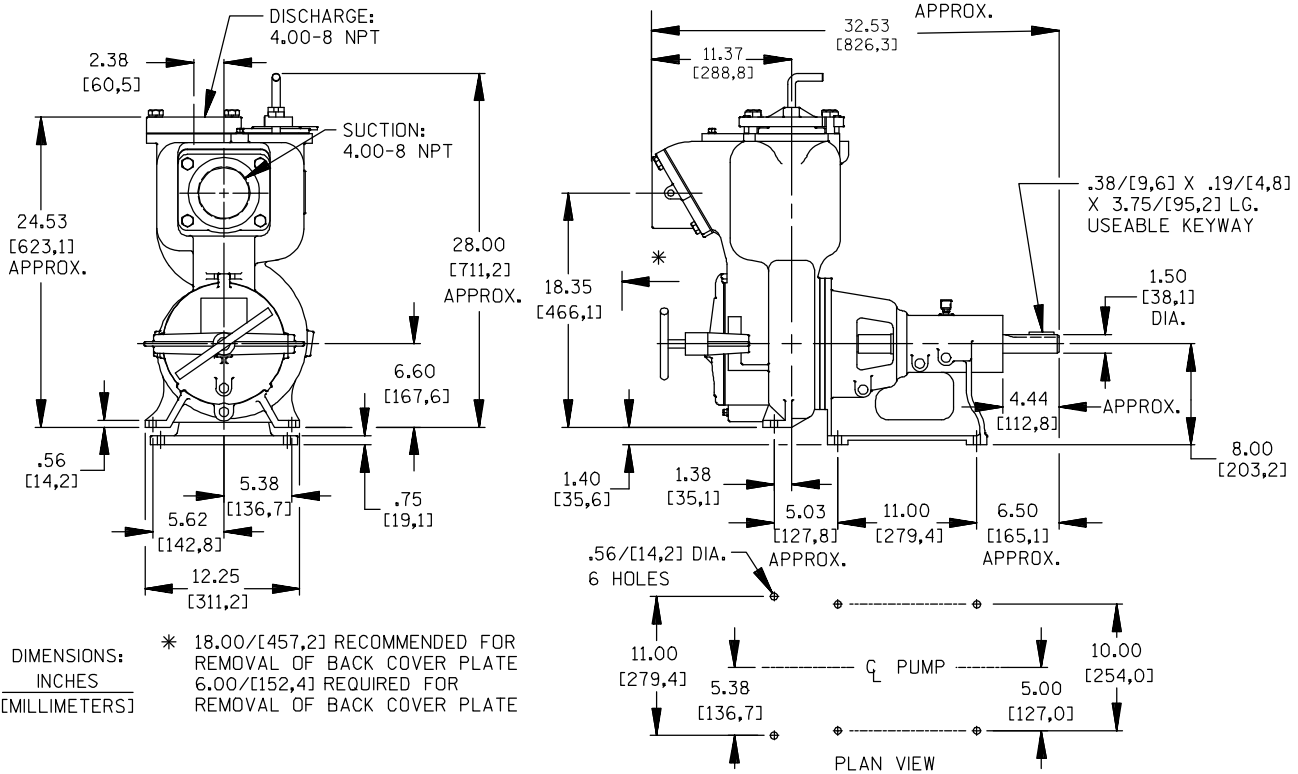
Printed in U.S.A.

**Specification Data**

SECTION 55, PAGE 610

APPROXIMATE DIMENSIONS and WEIGHTS

**NET WEIGHT:** 307 LBS. (139,2 KG.)  
**SHIPPING WEIGHT:** 322 LBS. (146,1 KG.)  
**EXPORT CRATE SIZE:** 18 CU. FT. (0,51 CU. M.)



THE GORMAN-RUPP COMPANY • MANSFIELD, OHIO

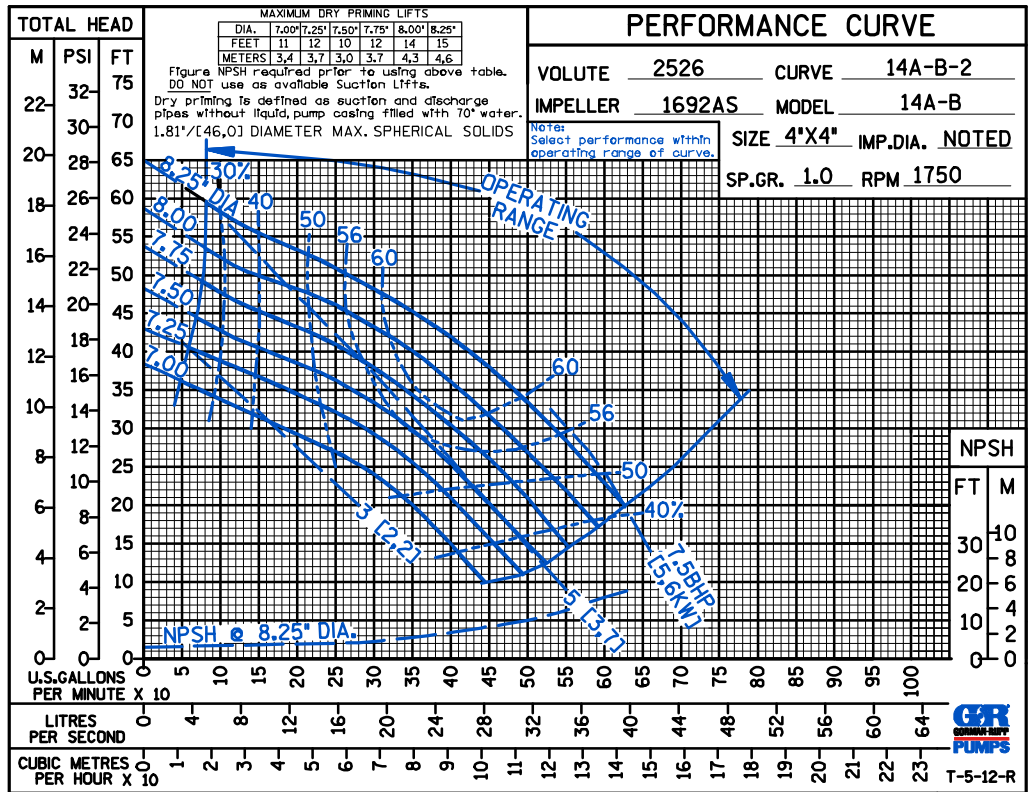
GORMAN-RUPP OF CANADA LIMITED • ST. THOMAS, ONTARIO, CANADA

Specifications Subject to Change Without Notice

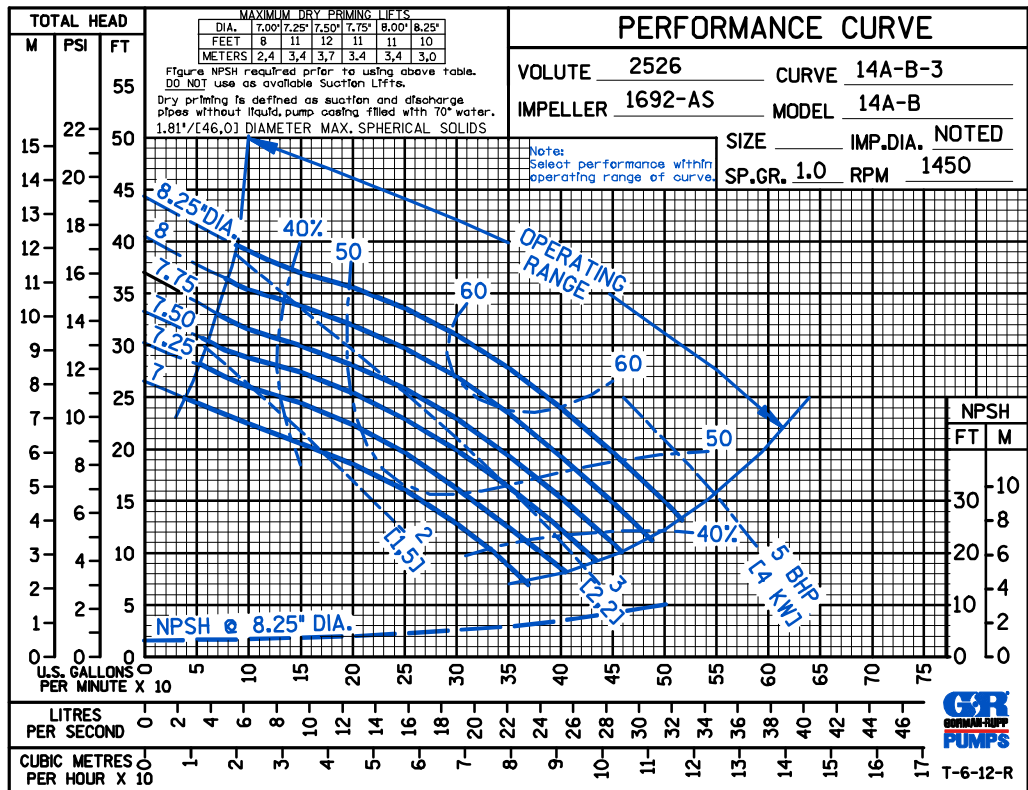
Printed in U.S.A.

ACDE

PERFORMANCE  
BASED ON  
WATER



50 HERTZ  
PERFORMANCE  
BASED ON  
WATER



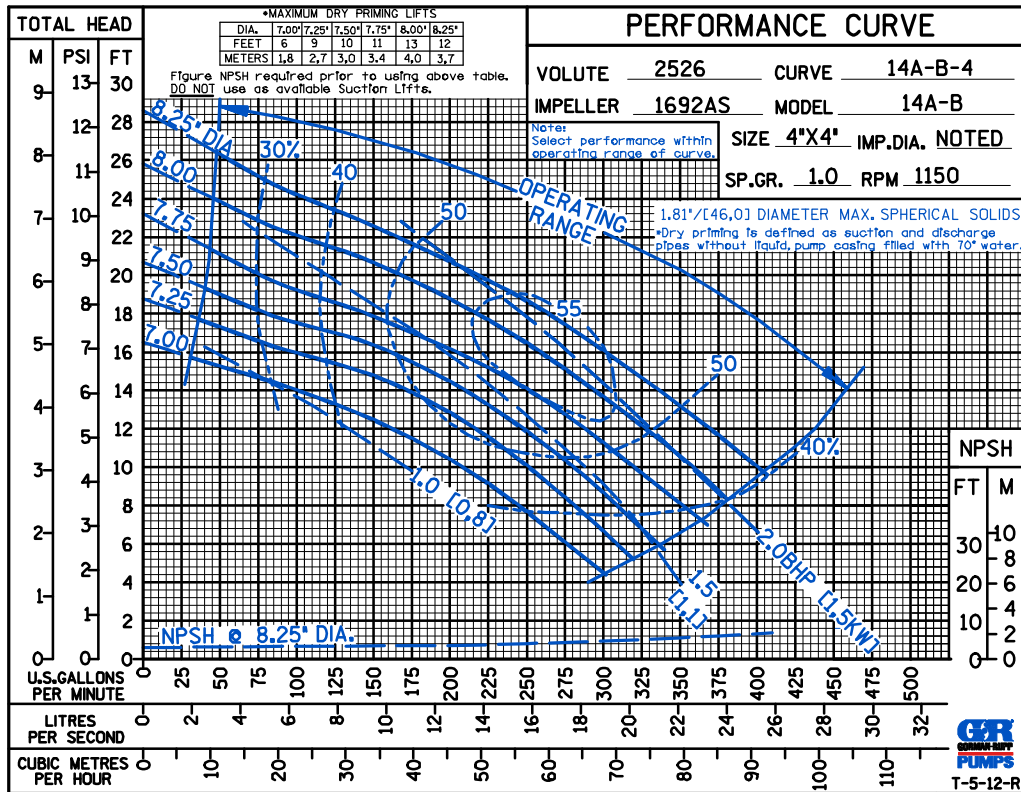
THE GORMAN-RUPP COMPANY • MANSFIELD, OHIO

GORMAN-RUPP OF CANADA LIMITED • ST. THOMAS, ONTARIO, CANADA

Specifications Subject to Change Without Notice

Printed in U.S.A.

ACDE



PERFORMANCE  
BASED ON  
WATER



THE GORMAN-RUPP COMPANY • MANSFIELD, OHIO

GORMAN-RUPP OF CANADA LIMITED • ST. THOMAS, ONTARIO, CANADA

Specifications Subject to Change Without Notice

Printed in U.S.A.