

A C D E



# Self Priming Centrifugal Pump

## Models 12B2-B and 12B20-B

### Size 2" x 2"

#### PUMP SPECIFICATIONS

**Size:** 2" x 2" (51 mm x 51 mm) NPT - Female.

**Casing:** Gray Iron 30.

Maximum Operating Pressure 59 psi (407 kPa).\*

**Semi-Open Type, Two Vane Impeller:** Ductile Iron 65-45-12.

Handles 1 1/4" (31,8 mm) Diameter Spherical Solids.

**Impeller Shaft:** Carbon Steel 1215.

**Replaceable Wear Plate:** Carbon Steel 1026.

**Removable Cover Plate:** Gray Iron No. 30. Weight 10 lbs. (5 kg).

**Pedestal:** Gray Iron 30.

**Seal Plate:** Gray Iron 30.

**Flap Valve:** Buna-N and Gray Iron 30.

**Seal Liner: (12B2-B)** Copper Alloy C26000.

**Shaft Sleeve: (12B20-B)** Alloy Steel 4130.

**Radial and Thrust Bearings:** Open Single Row Ball.

**Bearing Lubrication:** SAE 30 Non-Detergent Oil.

**Flange:** Gray Iron 30.

**Gaskets:** Vegetable Fiber and Rubber.

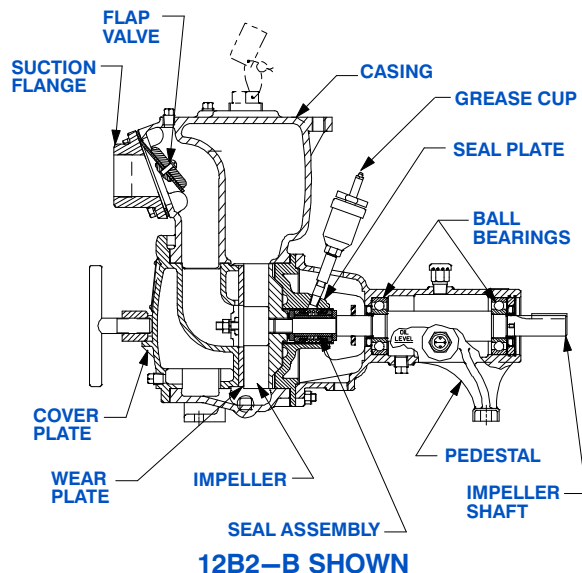
**O-Ring:** Buna-N.

**Hardware:** Standard Plated Steel.

**Optional Equipment:** Strainer. Flanged Suction and Discharge.

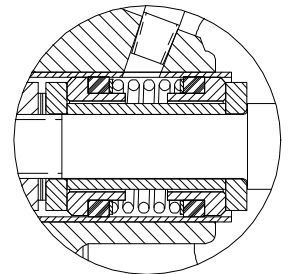
120/240 Volt Casing Heater. High Temp Shut Down Kit.

*\*Consult Factory for Applications Exceeding Maximum Pressure and/or Temperature Indicated.*



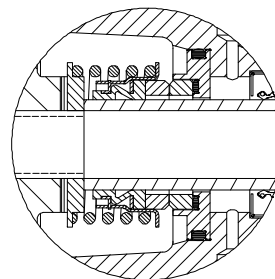
#### 12B2-B SEAL DETAIL

Double, Grease-Lubricated with Spring-Loaded Grease Cup. Steel Rotating Faces. Sintered Bronze Stationary Seal Seats. Neoprene Packing Rings. Maximum Temperature of Liquid Pumped, 110°F (43°C). Maximum Suction Pressure 10 PSI (69 kPa).\*



#### 12B20-B SEAL DETAIL

Mechanical, Oil-Lubricated, Double Floating, Self-Aligning. Tungsten Titanium Carbide Rotating and Stationary Faces. Stainless Steel 316 Stationary Seat. Fluorocarbon Elastomers (DuPont Viton® or Equivalent). Stainless Steel 303/304 Cage and Spring. Maximum Temperature of Liquid Pumped, 160°F (71°C).\*



THE GORMAN-RUPP COMPANY • MANSFIELD, OHIO

GORMAN-RUPP OF CANADA LIMITED • ST. THOMAS, ONTARIO, CANADA

www.grpumps.com

Specifications Subject to Change Without Notice

Printed in U.S.A.

**Specification Data**

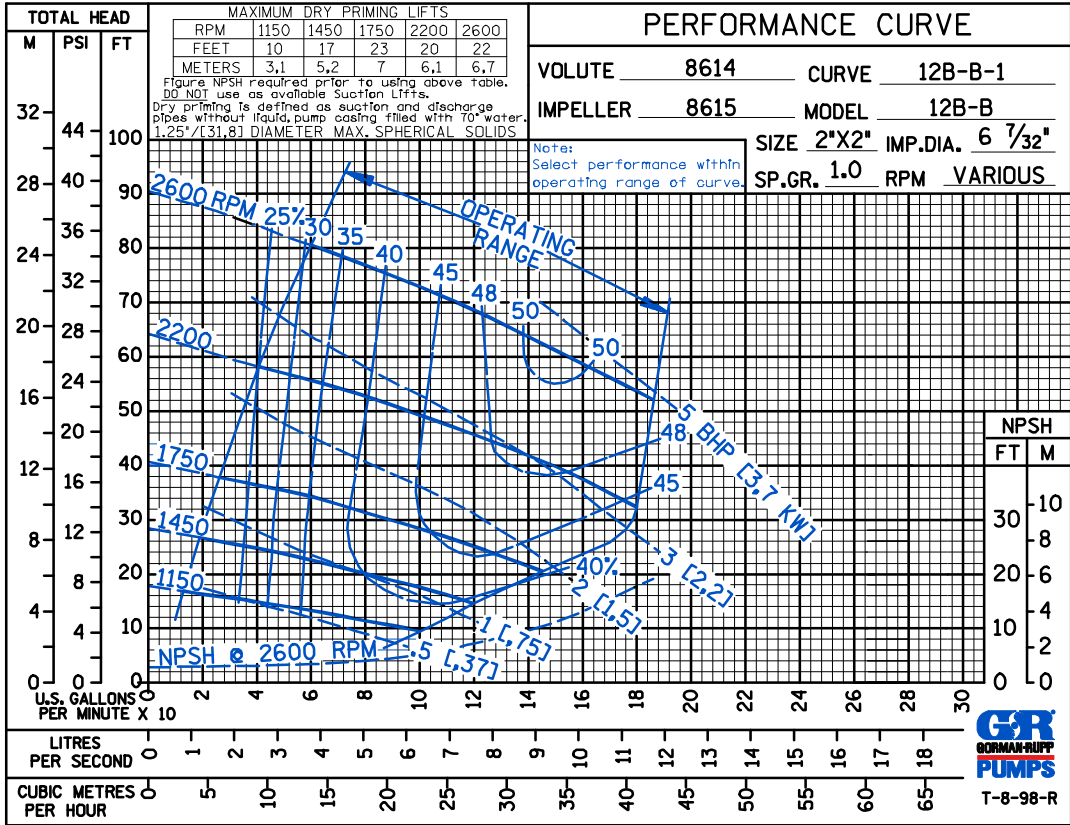
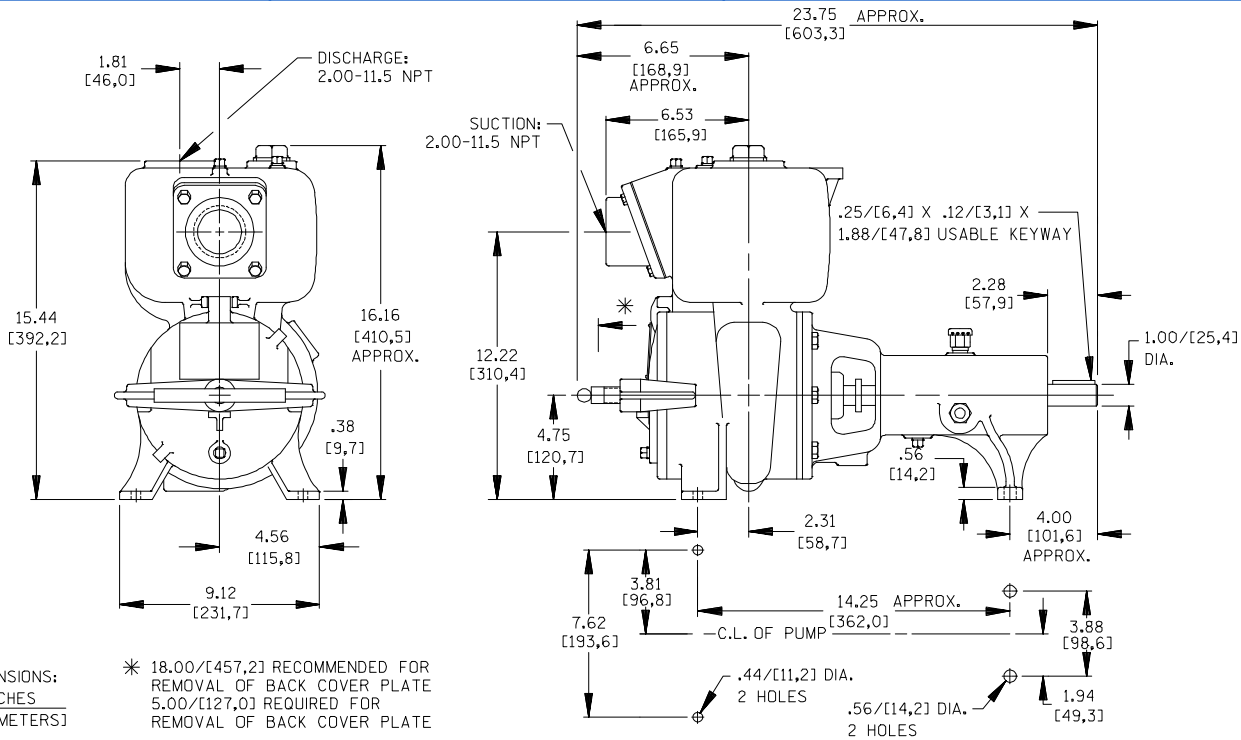
**SECTION 55, PAGE 200**

APPROXIMATE  
DIMENSIONS and WEIGHTS

**NET WEIGHT: 111 LBS. (50 KG.)**

**SHIPPING WEIGHT: 121 LBS. (55 KG.)**

**EXPORT CRATE SIZE: 6.2 CU. FT. (0,07 CU. M.)**



**THE GORMAN-RUPP COMPANY • MANSFIELD, OHIO**

GORMAN-RUPP OF CANADA LIMITED • ST. THOMAS, ONTARIO, CANADA

Specifications Subject to Change Without Notice

Printed in U.S.A.