

c

Self Priming Centrifugal Pump

Model 11 1/2A65-B

Size 1 1/2" x 1 1/2"



PUMP SPECIFICATIONS

Size: 1-1/2" x 1-1/2" (38 mm x 38 mm) NPT - Female.

Casing: Stainless Steel CD4MCu.

Maximum Operating Pressure 63 psi (434 kPa).*

Semi-Open Type, Two Vane Impeller: Stainless Steel CD4MCu.

Handles 1" (25,4 mm) Diameter Spherical Solids.

Impeller Shaft: Stainless Steel 316.

Shaft Sleeve: Stainless Steel 316.

Replaceable Wear Plate: Stainless Steel CD4MCu.

Removable Cover Plate: Stainless Steel CD4MCu.

Weight 6 lbs. (3 kg).

Pedestal: Gray Iron 30.

Seal Plate: Stainless Steel CD4MCu.

Flap Valve: Stainless Steel 316 and Alloy 20, Fluorocarbon Elastomers (DuPont Viton® or Equivalent).

Radial and Thrust Bearings: Open Single Row Ball.

Bearing Lubrication: Grease.

Suction Flange: Stainless Steel 316.

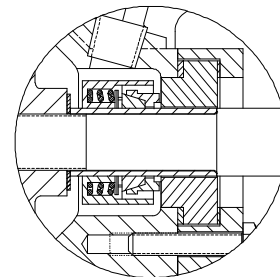
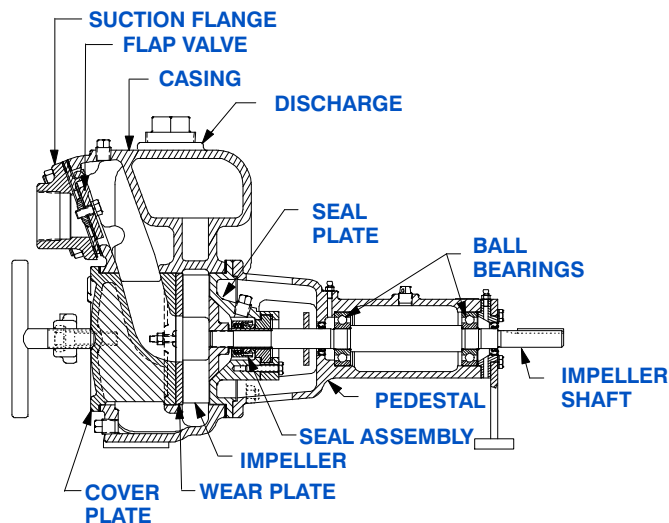
Gaskets: Fluorocarbon (DuPont Viton® or Equivalent).

Internal Wetted Hardware: Stainless Steel 316.

External Hardware: Stainless Steel 316 and Standard Plated Steel.

Optional Equipment: Consult Factory for Options.

**Consult Factory for Applications Exceeding Maximum Pressure and/or Temperature Indicated.*



SEAL DETAIL

Type 9, Mechanical, Self-Lubricated. Silicon Carbide Rotating and Stationary Faces. Elastomers are PTFE. Stainless Steel Alloy 20 Cage and Spring. Maximum Temperature of Liquid Pumped 160°F(71°C).*



THE GORMAN-RUPP COMPANY • MANSFIELD, OHIO

GORMAN-RUPP OF CANADA LIMITED • ST. THOMAS, ONTARIO, CANADA

www.grpumps.com

Specifications Subject to Change Without Notice

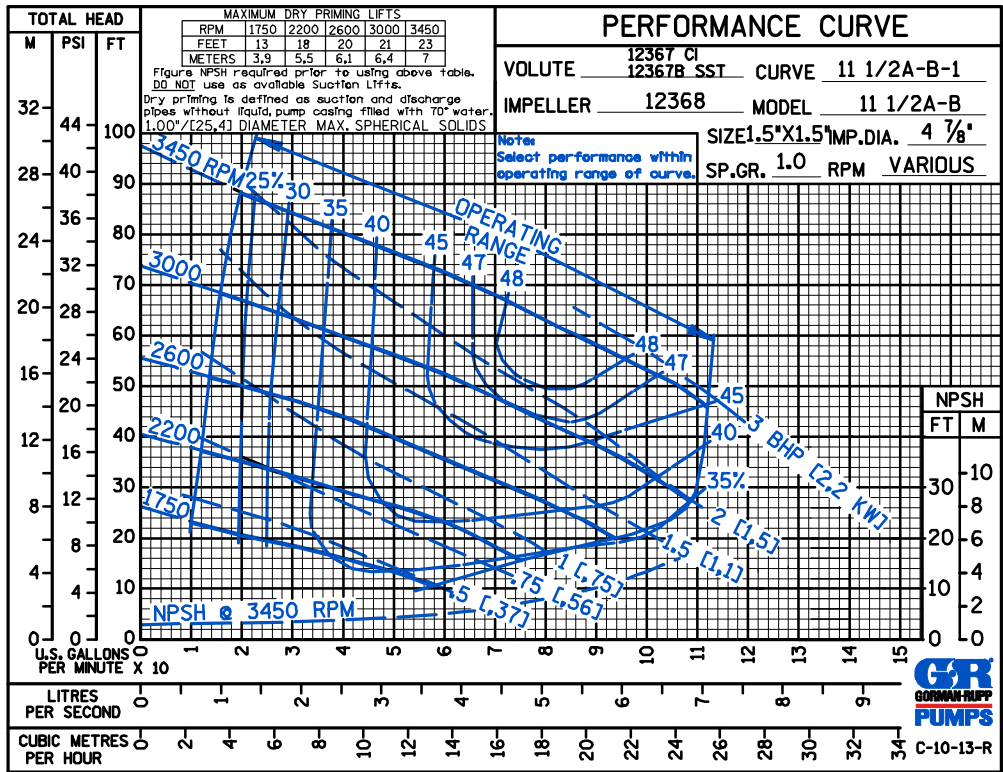
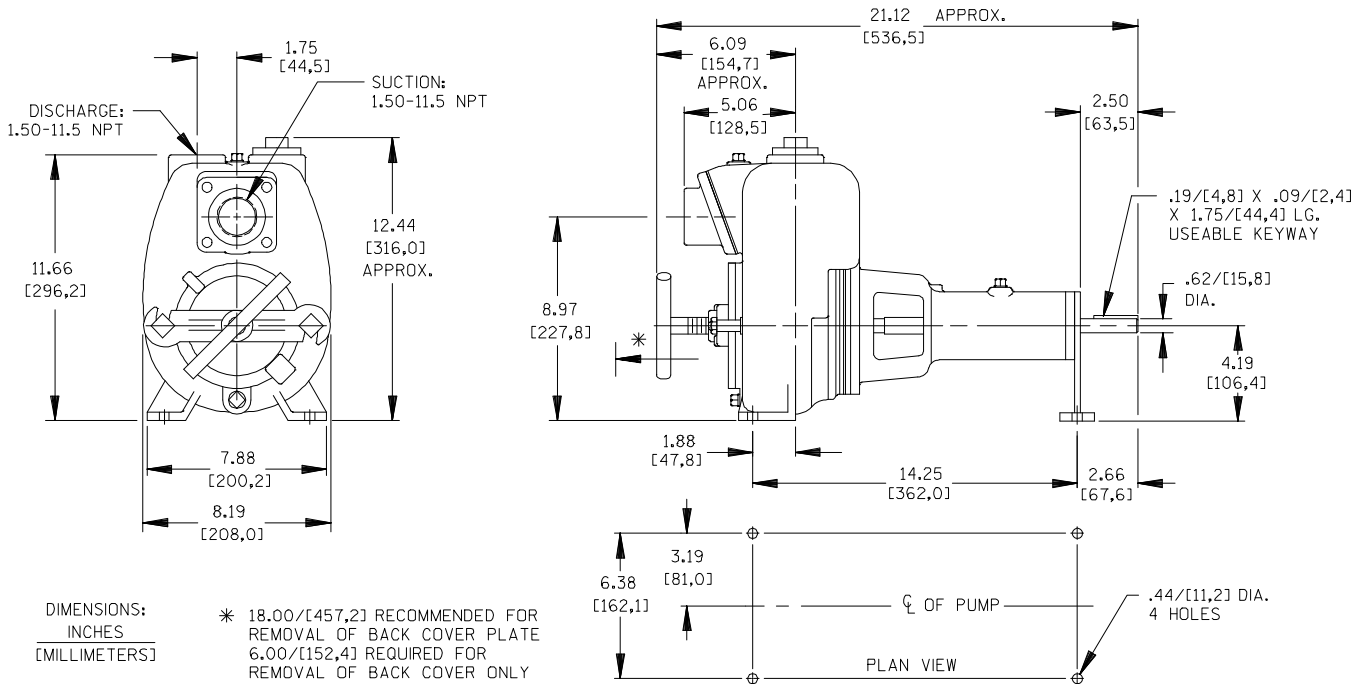
Printed in U.S.A.

Specification Data

SECTION 55, PAGE 110

APPROXIMATE DIMENSIONS and WEIGHTS

NET WEIGHT: 68 LBS. (30,8 KG.)
 SHIPPING WEIGHT: 78 LBS. (35,4 KG.)
 EXPORT CRATE SIZE: 3.5 CU. FT. (0,1 CU. M.)



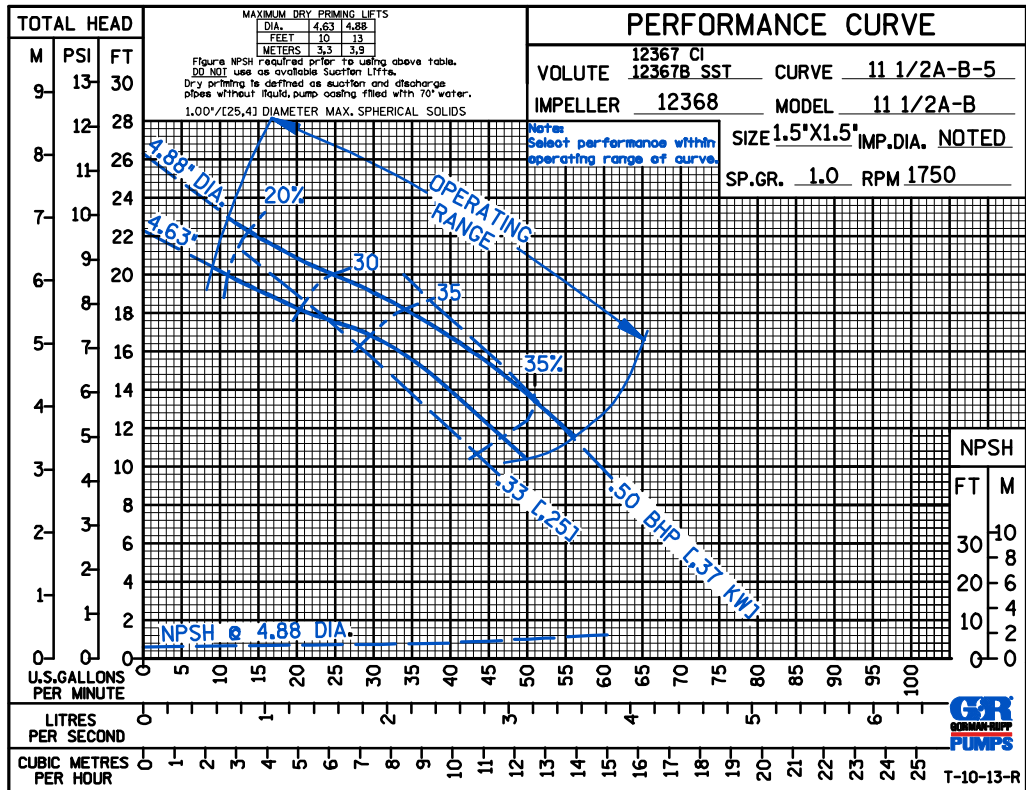
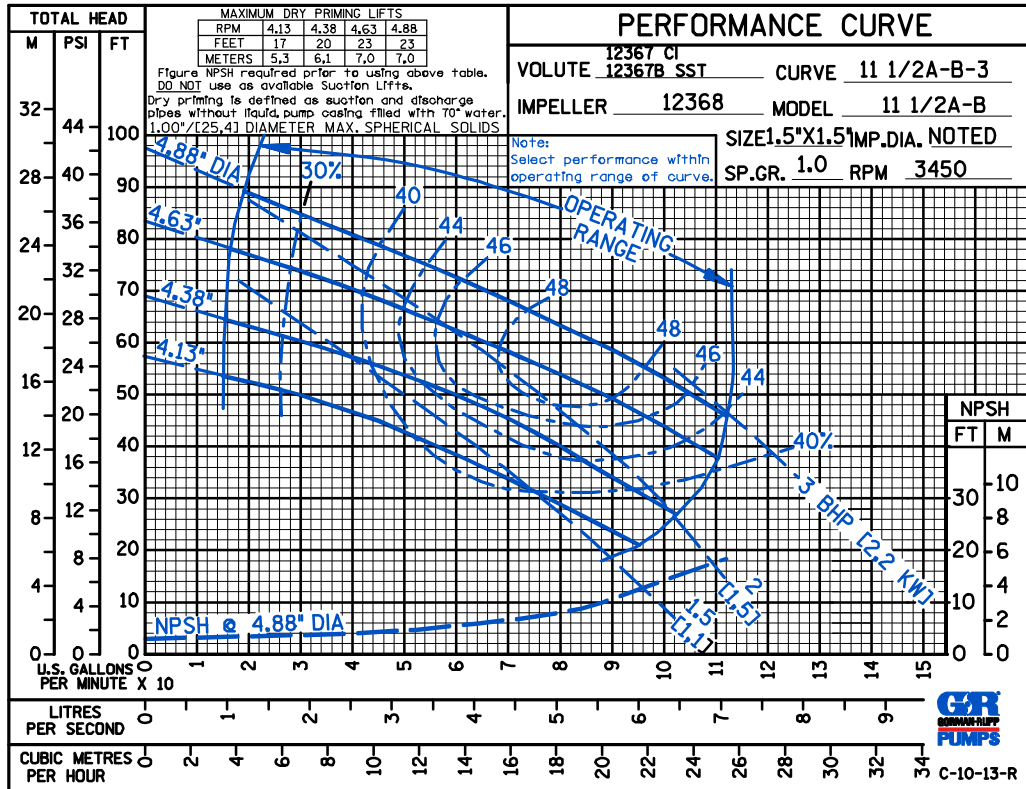
THE GORMAN-RUPP COMPANY • MANSFIELD, OHIO

GORMAN-RUPP OF CANADA LIMITED • ST. THOMAS, ONTARIO, CANADA

Specifications Subject to Change Without Notice

Printed in U.S.A.

ACDE



THE GORMAN-RUPP COMPANY • MANSFIELD, OHIO

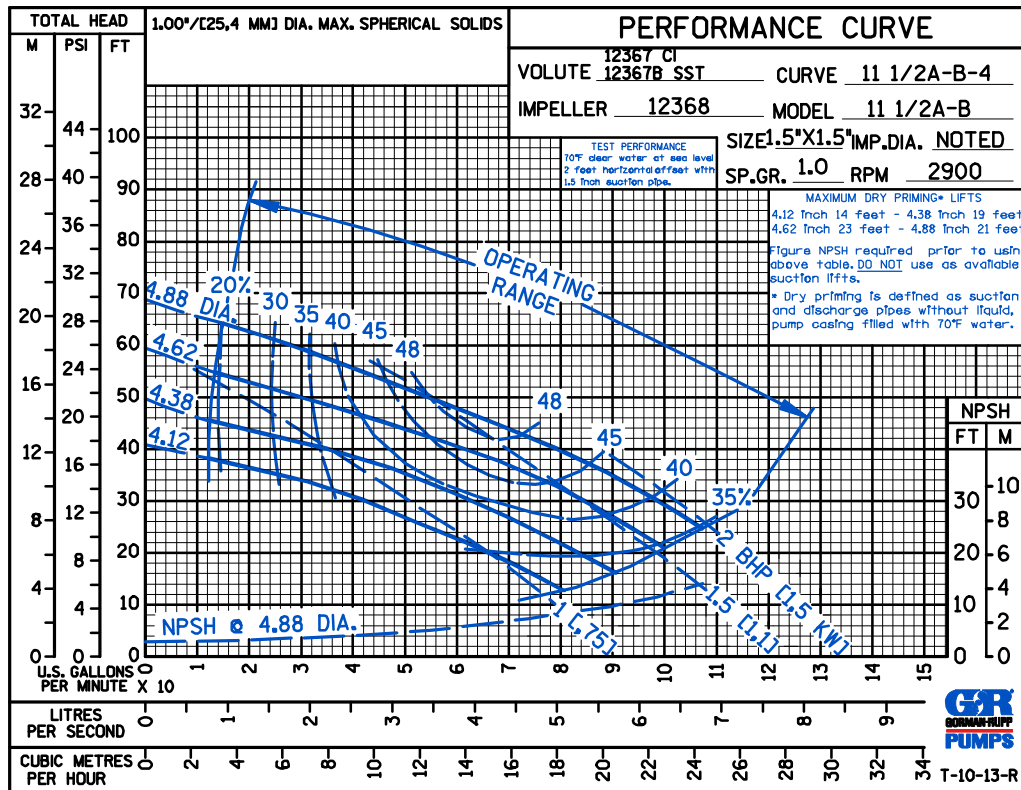
GORMAN-RUPP OF CANADA LIMITED • ST. THOMAS, ONTARIO, CANADA

Specifications Subject to Change Without Notice

Printed in U.S.A.

ACDE

50 HERTZ
PERFORMANCE
BASED ON
WATER
TRIMMED
IMPELLER



THE GORMAN-RUPP COMPANY • MANSFIELD, OHIO

GORMAN-RUPP OF CANADA LIMITED • ST. THOMAS, ONTARIO, CANADA

Specifications Subject to Change Without Notice

Printed in U.S.A.