

C

Self Priming Centrifugal Pump

Models 11 1/2A9-B and 11 1/2A22-B

Size 1-1/2" x 1-1/2"



PUMP SPECIFICATIONS

Size: 1-1/2" x 1-1/2" (38 mm x 38 mm) NPT - Female.

Casing: Stainless Steel 316.

Maximum Operating Pressure 64 psi (441 kPa).*

Semi-Open Type, Two Vane Impeller: Stainless Steel 316.

Handles 1" (25,4 mm) Diameter Spherical Solids.

Impeller Shaft: Stainless Steel 316.

Replaceable Wear Plate: Stainless Steel 316.

Removable Cover Plate: Stainless Steel 316; 6 lbs. (3 kg).

Pedestal: Gray Iron 30.

Seal Plate: Stainless Steel 316.

Flap Valve: Stainless Steel Alloy 20; Stainless Steel 316;
Fluorocarbon Elastomers (DuPont Viton® or Equivalent).

Shaft Sleeve: (11-1/2A9-B) Stainless Steel 17-4 PH;
(11-1/2A22-B) Stainless Steel 316.

Radial and Thrust Bearings: Open Single Row Ball.

Bearing Lubrication: Grease.

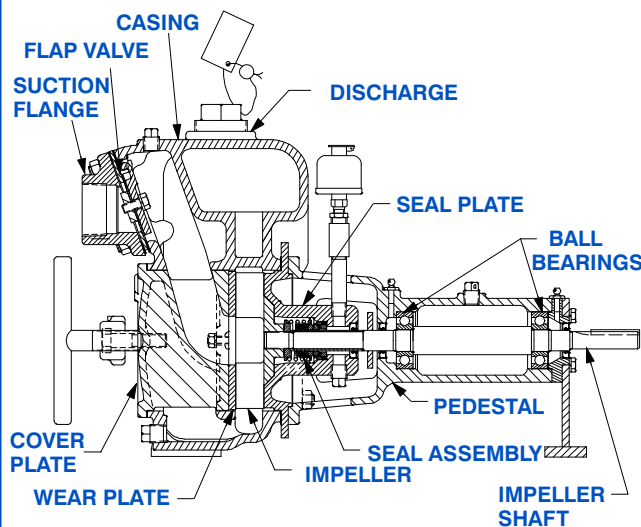
Flange: Stainless Steel 316.

Gaskets: Fluorocarbon (DuPont Viton® or Equivalent).

Hardware: Stainless Steel 316.

Optional Equipment: Consult Factory.

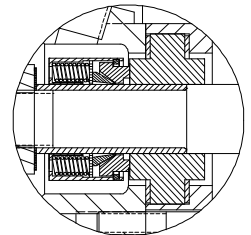
**Consult Factory for Applications Exceeding Maximum Pressure and/or Temperature Indicated.*



11 1/2A22-B SHOWN

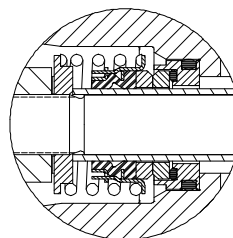
11 1/2A9-B SEAL DETAIL

Type 9, Mechanical, Self-Lubricated. Tungsten Carbide Rotating and Stationary Faces. PTFE Elastomers. Stainless Steel 316 Cage and Spring. Maximum Temperature of Liquid Pumped, 160°F (71°C).*



11 1/2A22-B SEAL DETAIL

Type 2, Mechanical, Oil-Lubricated, Double Floating, Self-Aligning. Tungsten Titanium Carbide Rotating and Stationary Faces. Stainless Steel 316 Stationary Seat. Fluorocarbon Elastomers (DuPont Viton® or Equivalent). Stainless Steel 18-8 Cage and Spring. Maximum Temperature of Liquid Pumped, 160°F (71°C).*



THE GORMAN-RUPP COMPANY • MANSFIELD, OHIO

GORMAN-RUPP OF CANADA LIMITED • ST. THOMAS, ONTARIO, CANADA

www.grpumps.com

Specifications Subject to Change Without Notice

Printed in U.S.A.

Specification Data

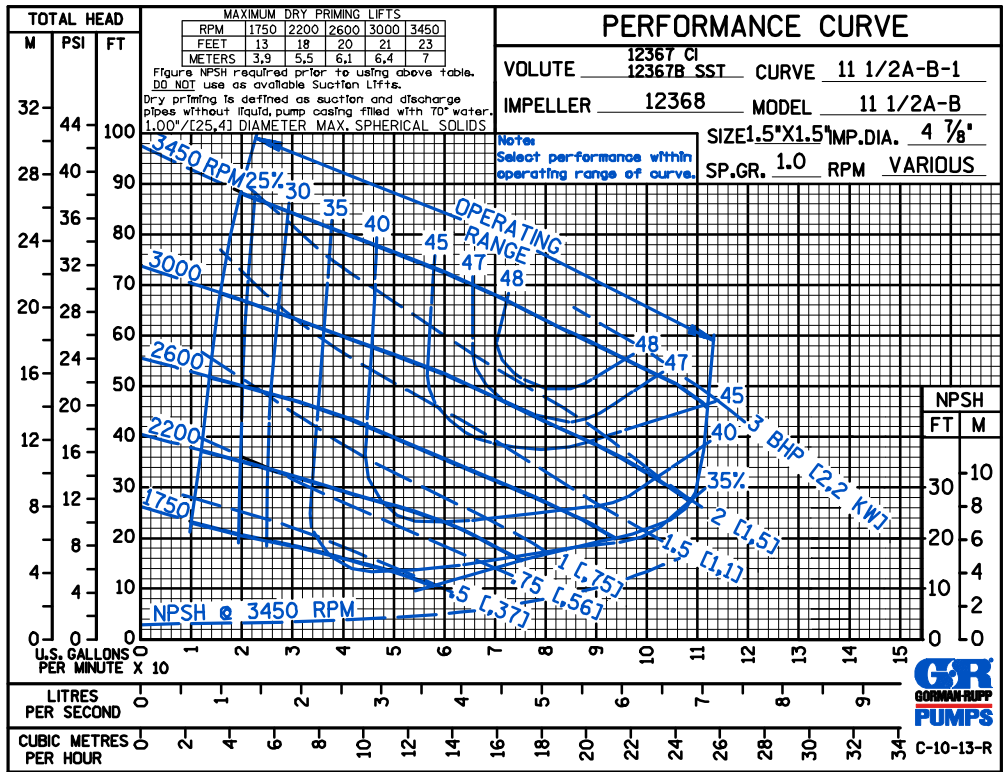
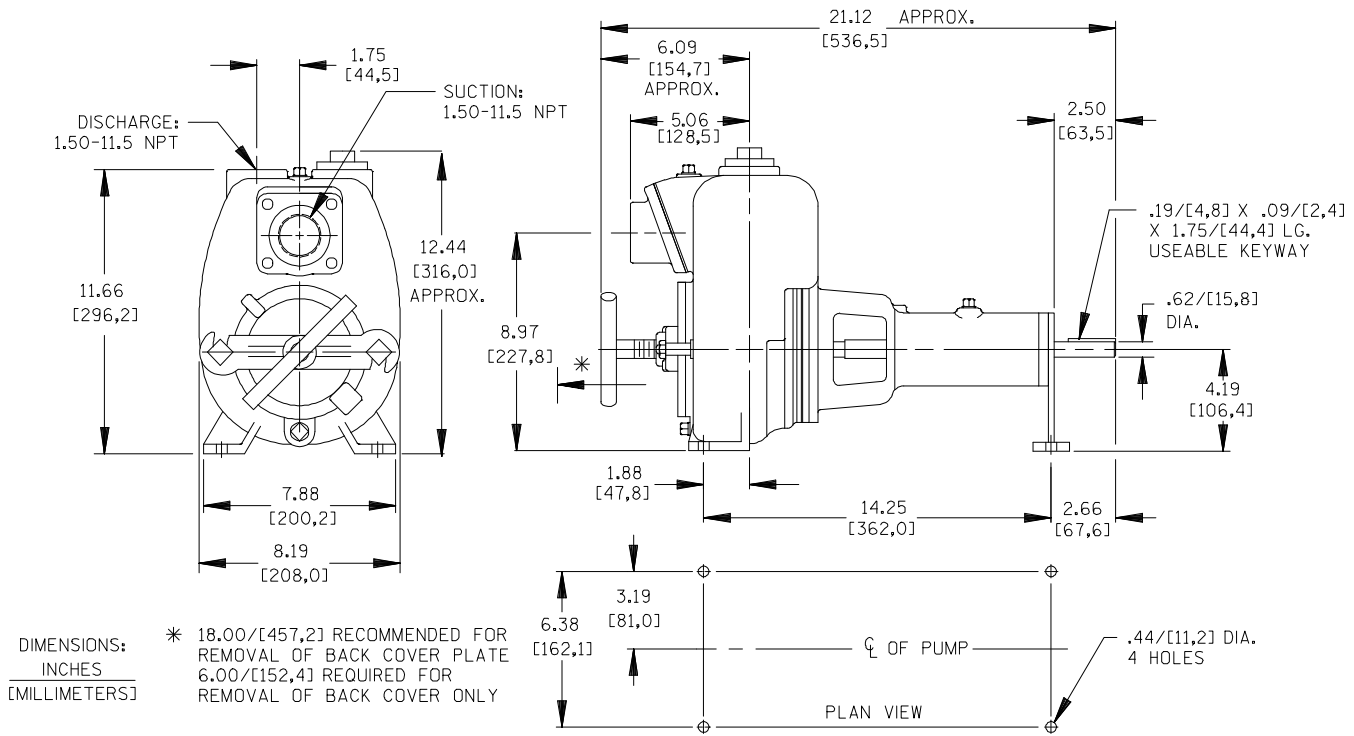
SECTION 55, PAGE 104

APPROXIMATE DIMENSIONS and WEIGHTS

NET WEIGHT: 71 LBS. (32,2 KG.)

SHIPPING WEIGHT: 81 LBS. (36,7 KG.)

EXPORT CRATE SIZE: 3.5 CU. FT. (0,1 CU. M.)



THE GORMAN-RUPP COMPANY • MANSFIELD, OHIO

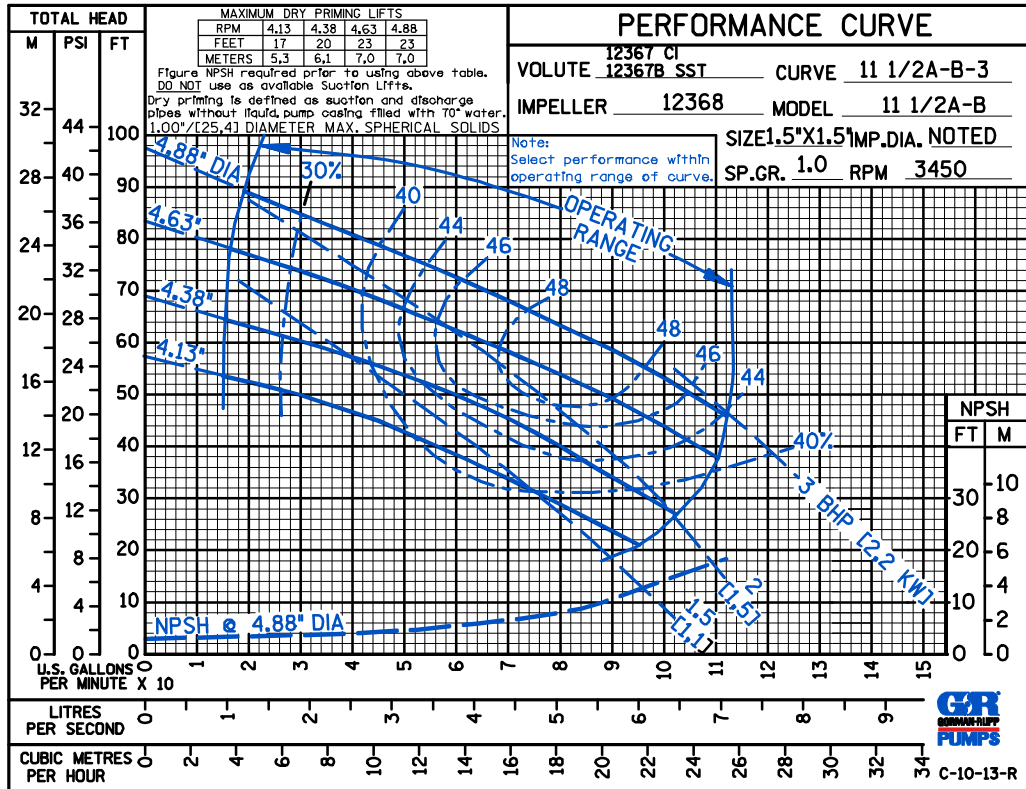
GORMAN-RUPP OF CANADA LIMITED • ST. THOMAS, ONTARIO, CANADA

Specifications Subject to Change Without Notice

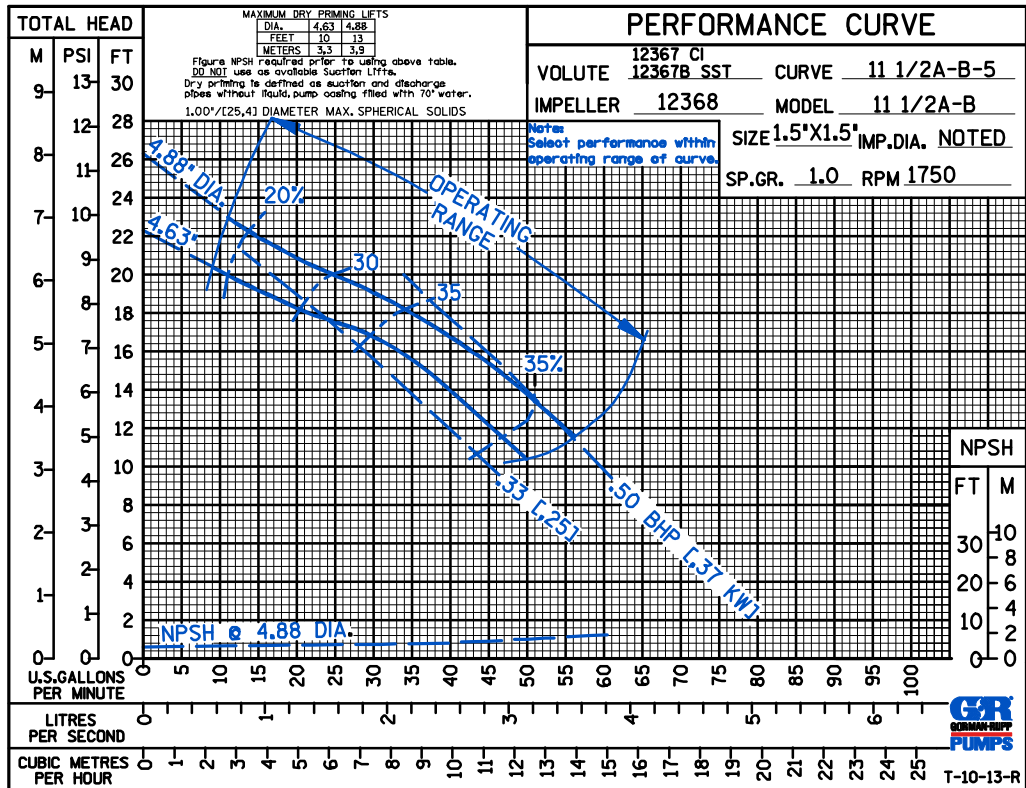
Printed in U.S.A.

ACDE

60 HERTZ
PERFORMANCE
BASED ON
WATER
TRIMMED
IMPELLER



60 HERTZ
PERFORMANCE
BASED ON
WATER
TRIMMED
IMPELLER



THE GORMAN-RUPP COMPANY • MANSFIELD, OHIO

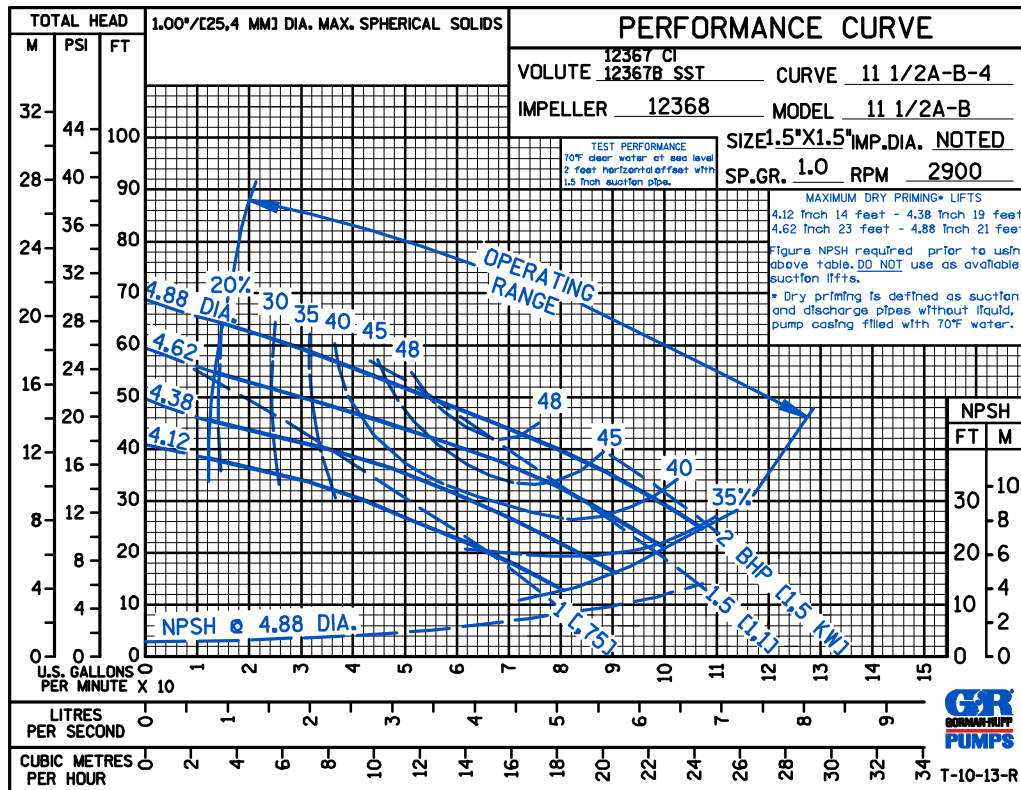
GORMAN-RUPP OF CANADA LIMITED • ST. THOMAS, ONTARIO, CANADA

Specifications Subject to Change Without Notice

Printed in U.S.A.

ACDE

50 HERTZ
PERFORMANCE
BASED ON
WATER
TRIMMED
IMPELLER



THE GORMAN-RUPP COMPANY • MANSFIELD, OHIO

GORMAN-RUPP OF CANADA LIMITED • ST. THOMAS, ONTARIO, CANADA

Specifications Subject to Change Without Notice

Printed in U.S.A.