

A B C D E

# Self Priming Centrifugal Pump



## Models 86A3-B and 86A52-B

### Size 6" x 6"

#### PUMP SPECIFICATIONS

**Size:** 6" x 6" (152 mm x 152 mm) NPT - Female.

**Casing:** Gray Iron 30.

Maximum Operating Pressure 82 psi (565 kPa)\*.

**Semi-Open Type, Three Vane Impeller:** Gray Iron 30.

Handles 1 15/16" (49.3 mm) Diameter Spherical Solids.

**Impeller Shaft:** Alloy Steel 4150.

**Replaceable Wear Plate:** Gray Iron 30.

**Pedestal:** Gray Iron 30.

**Seal Plate:** Gray Iron 30.

**Shaft Sleeve:** Alloy Steel 4130.

**Flap Valve:** Buna-N and Steel.

**Radial Bearings:** Open Single Row Ball.

**Thrust Bearings:** Open Double Row Ball.

**Bearing Lubrication:** SAE 30 Non-Detergent Oil.

**Flanges:** Gray Iron 30.

**Gaskets:** Cork.

**O-Rings:** Buna-N

**Hardware:** Standard Plated Steel and Stainless Steel.

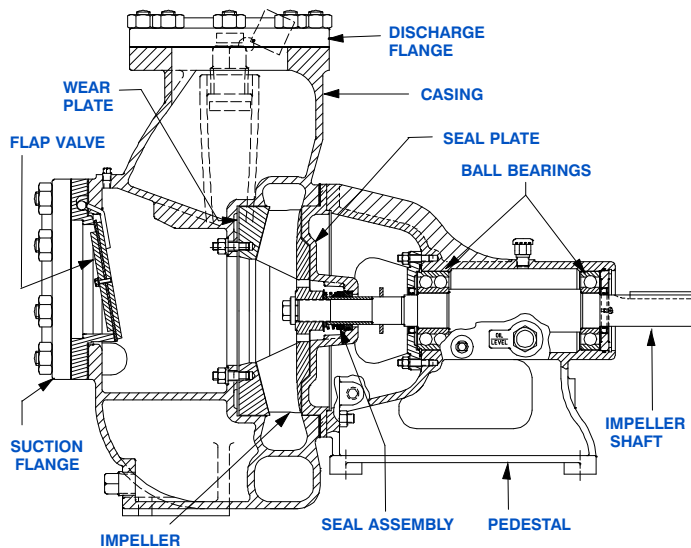
**Oil Level Sight Gauge.**

**Optional Equipment:** 120/240 Volt Casing Heater. Strainer.

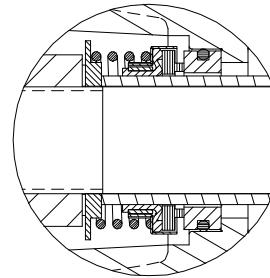
Consult Factory for Additional Options.



*\*Consult Factory for Applications Exceeding Maximum Pressure and/or Temperature Indicated.*



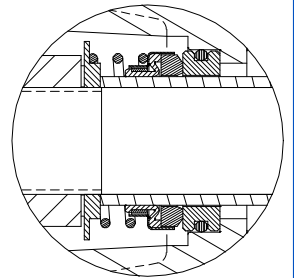
86A52-B SHOWN



**86A3-B SEAL DETAIL** Type 21, Mechanical, Self-Lubricated. Carbon Rotating Face. Ni-Resist Stationary Face. Fluorocarbon Elastomers (DuPont Viton® or Equivalent). Stainless Steel 18-8 Cage and Spring. Maximum Temperature of Liquid Pumped, 160°F (71°C).\*

#### 86A52-B SEAL DETAIL

Type 31, Mechanical, Self-Lubricated. Silicon Carbide Rotating and Stationary Faces. Fluorocarbon Elastomers (DuPont Viton® or Equivalent). Stainless Steel 18-8 Cage and Spring. Maximum Temperature of Liquid Pumped 160°F (71°C).\*



THE GORMAN-RUPP COMPANY • MANSFIELD, OHIO

GORMAN-RUPP OF CANADA LIMITED • ST. THOMAS, ONTARIO, CANADA

www.grpumps.com

Specifications Subject to Change Without Notice

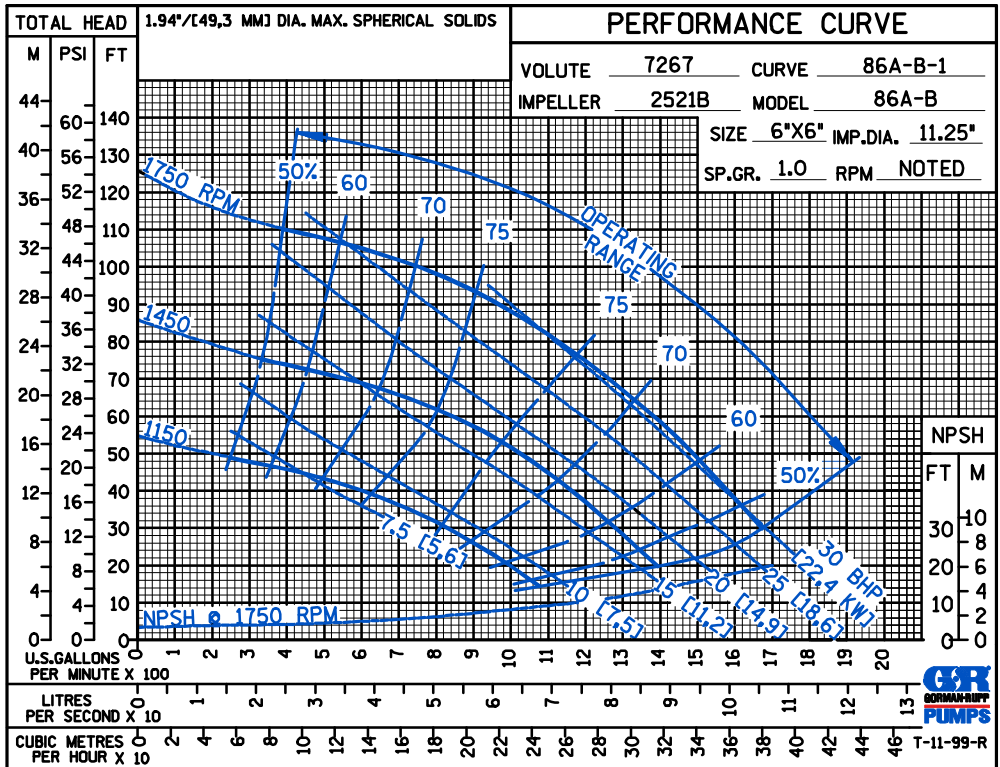
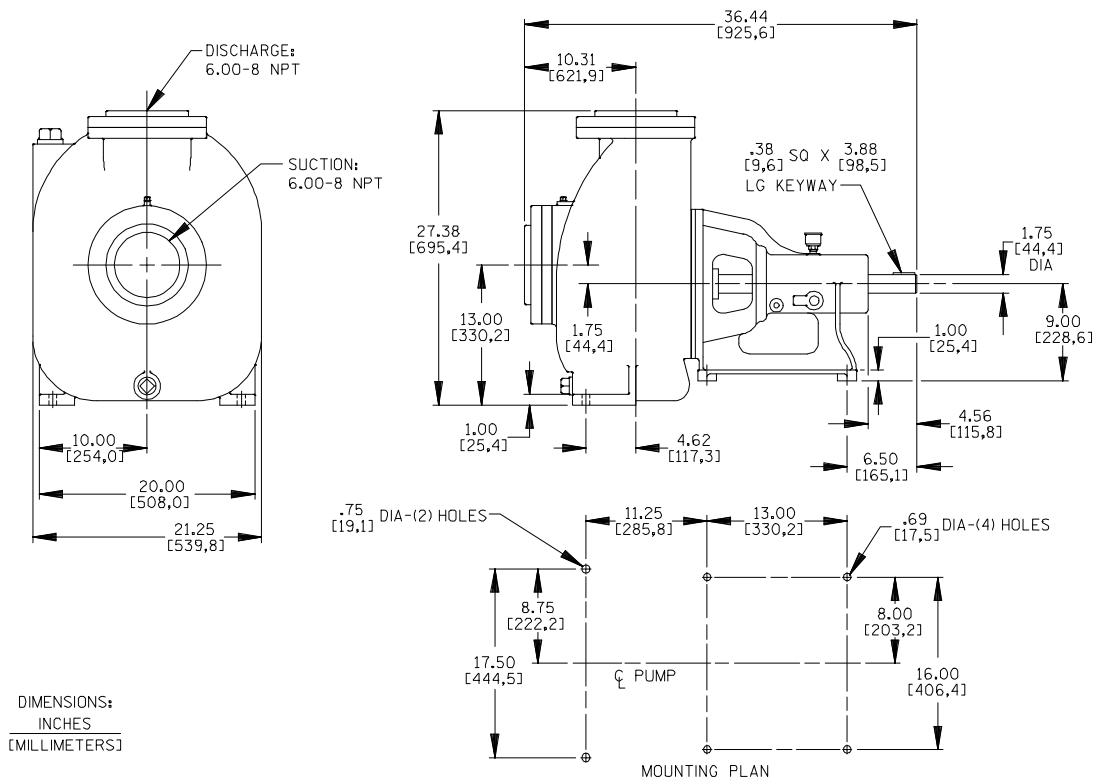
Printed in U.S.A.

**Specification Data**

SECTION 50, PAGE 2001

APPROXIMATE  
DIMENSIONS and WEIGHTS

**NET WEIGHT: 630 LBS. (286 KGS.)**  
**SHIPPING WEIGHT: 680 LBS. (308 KGS.)**  
**EXPORT CRATE: 24.5 CU. FT. (0,69 CU. M.)**



THE GORMAN-RUPP COMPANY • MANSFIELD, OHIO

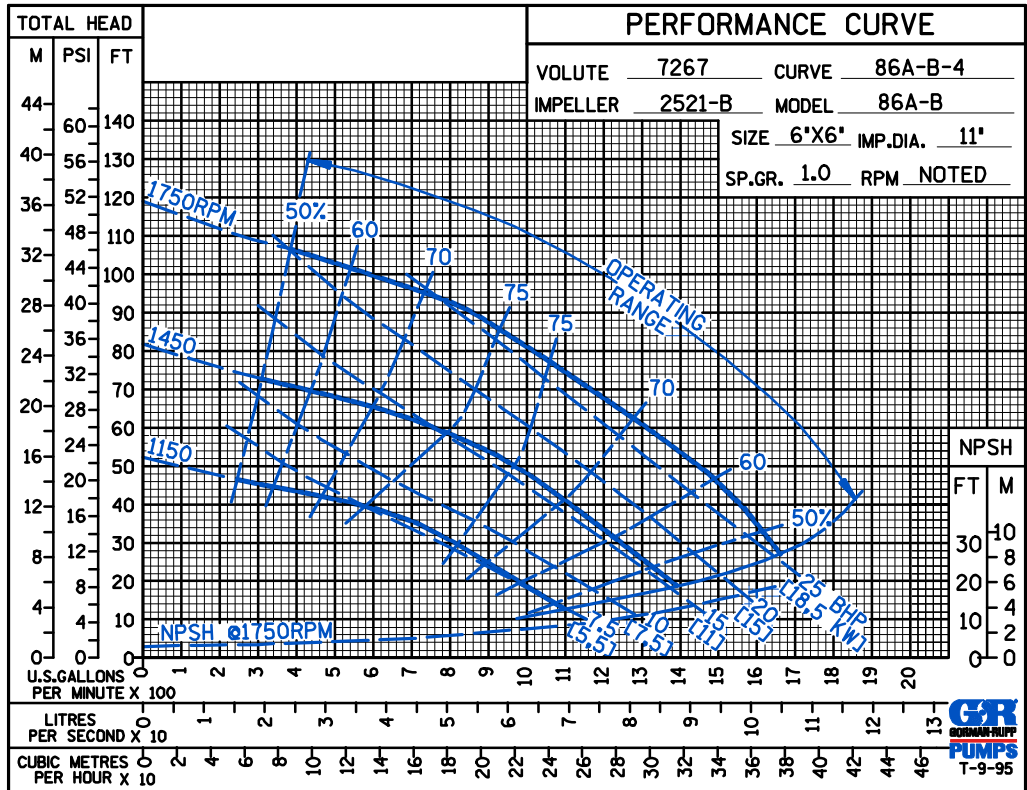
GORMAN-RUPP OF CANADA LIMITED • ST. THOMAS, ONTARIO, CANADA

Specifications Subject to Change Without Notice

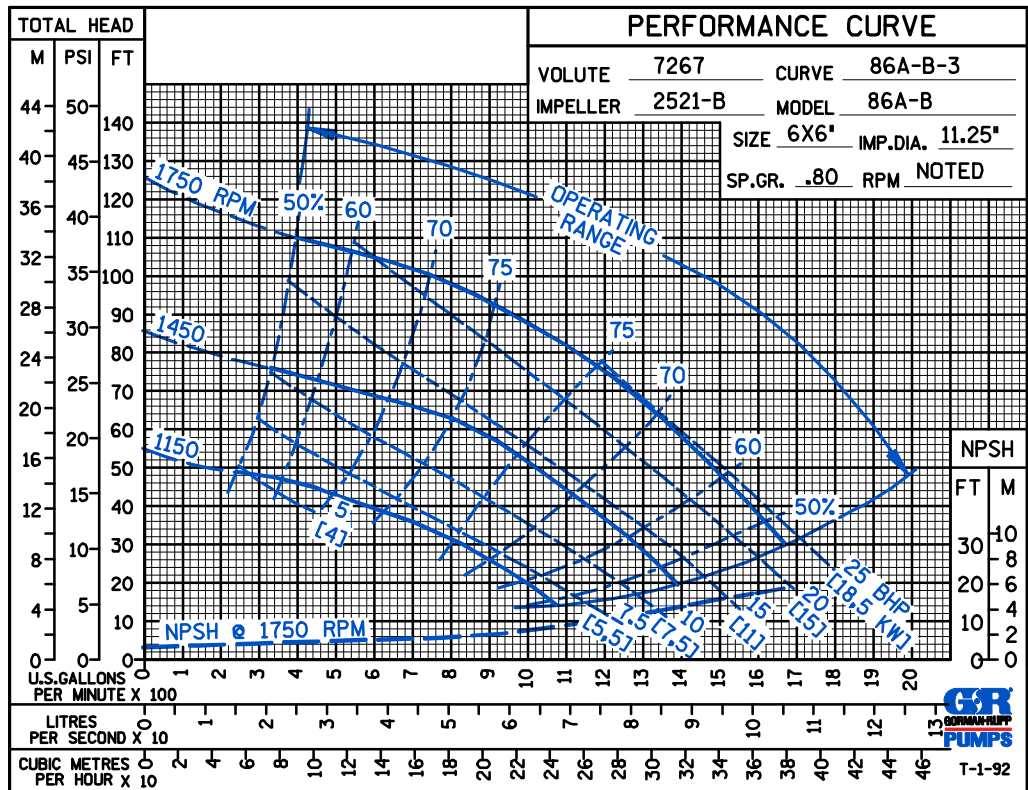
Printed in U.S.A.

ABCDE

TRIMMED  
IMPELLER



PERFORMANCE  
BASED ON  
PETROLEUM



THE GORMAN-RUPP COMPANY • MANSFIELD, OHIO

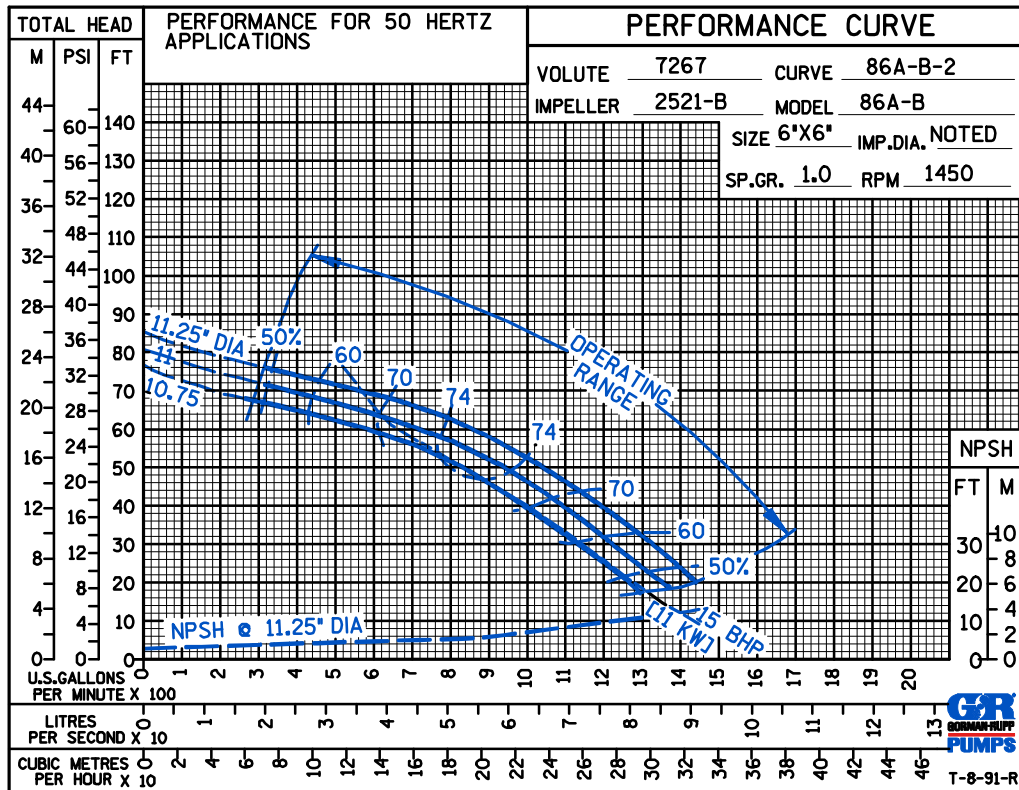
GORMAN-RUPP OF CANADA LIMITED • ST. THOMAS, ONTARIO, CANADA

Specifications Subject to Change Without Notice

Printed in U.S.A.

A B C D E

50 HERTZ  
PERFORMANCE  
BASED ON  
WATER



THE GORMAN-RUPP COMPANY • MANSFIELD, OHIO

GORMAN-RUPP OF CANADA LIMITED • ST. THOMAS, ONTARIO, CANADA

Specifications Subject to Change Without Notice

Printed in U.S.A.