

c

Self Priming Centrifugal Pump

Basic Pedestal

Models 84A59-B, 84A64-B, and 84A65-B

Size 4" x 4"



PUMP SPECIFICATIONS

Size: 4" x 4" NPT (102 mm x 102 mm) - Female.

Casing: (84A59-B) Stainless Steel Alloy 20. (84A64-A and 84A65-B) Stainless Steel CD4MCu. Maximum Operating Pressure 82 psi (5,8 kg/cm²).*

Open Type, Three Vane Impeller: (84A59-B) Stainless Steel Alloy 20. (84A64-A and 84A65-B) Stainless Steel CD4MCu. Handles 1 1/8" (28,6 mm) Diameter Spherical Solids.

Impeller Shaft: (84A59-B) Stainless Steel Alloy 20. (84A64-A and 84A65-B) Stainless Steel No. 17-4 PH.

Replaceable Wear Plate: (84A59-B) Stainless Steel Alloy 20. (84A64-A and 84A65-B) Stainless Steel CD4MCu.

Pedestal: Gray Iron No. 30.

Seal Plate: (84A59-B) Stainless Steel Alloy 20. (84A64-A and 84A65-B) Stainless Steel CD4MCu.

Shaft Sleeve: (84A59-B) Stainless Steel Alloy 20. (84A64-A and 84A65-B) Stainless Steel No. 17-4 PH.

Seal Clamp: (84A59-B) Stainless Steel Alloy 20. (84A65-B) Stainless Steel No. 316.

Flap Valve: (84A59-B) Stainless Steel Alloy 20. (84A64-A and 84A65-B) Stainless Steel No. 316. Fluorocarbon Elastomers (DuPont Viton® or Equivalent).

Radial Bearing: Open Single Ball.

Thrust Bearing: Open Double Ball.

Bearing Lubrication: Oil.

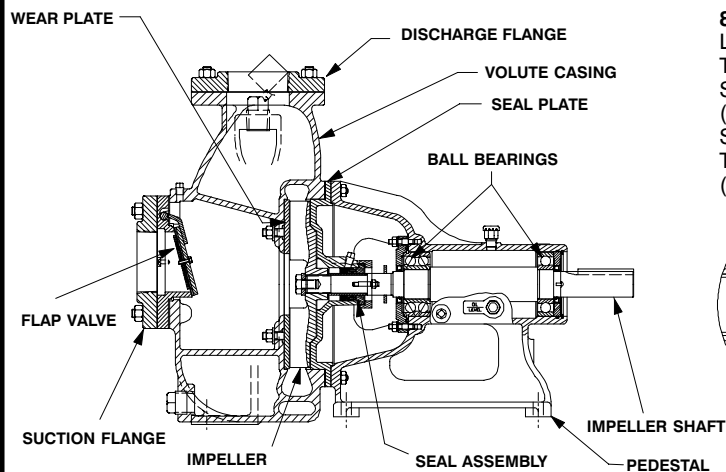
Flanges: (84A59-B) Stainless Steel Alloy 20. (84A64-A and 84A65-B) Stainless Steel No. 316.

Gaskets: Fluorocarbon (DuPont Viton® or Equivalent).

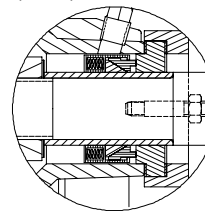
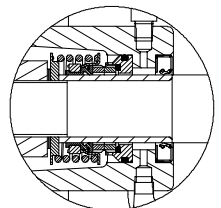
Hardware: Stainless Steel No. 316.

Oil Level Sight Gauge.

Optional Equipment: Consult Factory.



84A64-B SEAL DETAIL Mechanical, Oil-Lubricated. Double Floating, Self-Aligning. Tungsten Titanium Carbide Rotating and Stationary Faces. Fluorocarbon Elastomers (DuPont Viton® or Equivalent). Stainless Steel No. 18-8 Cage and Spring. Maximum Temperature of Liquid Pumped, 160°F (71°C).*



84A59-B and 84A65-B SEAL DETAIL Type 9, Mechanical, Self-Lubricated. Silicon Carbide Rotating and Stationary Faces. PTFE Elastomers. Stainless Steel Alloy 20 Cage and Spring. Maximum Temperature of Liquid Pumped, 160°F (71°C).*

*Consult Factory for Applications Exceeding Maximum Pressure and/or Temperature Indicated.



THE GORMAN-RUPP COMPANY • MANSFIELD, OHIO

GORMAN-RUPP OF CANADA LIMITED • ST. THOMAS, ONTARIO, CANADA

Specifications Subject to Change Without Notice

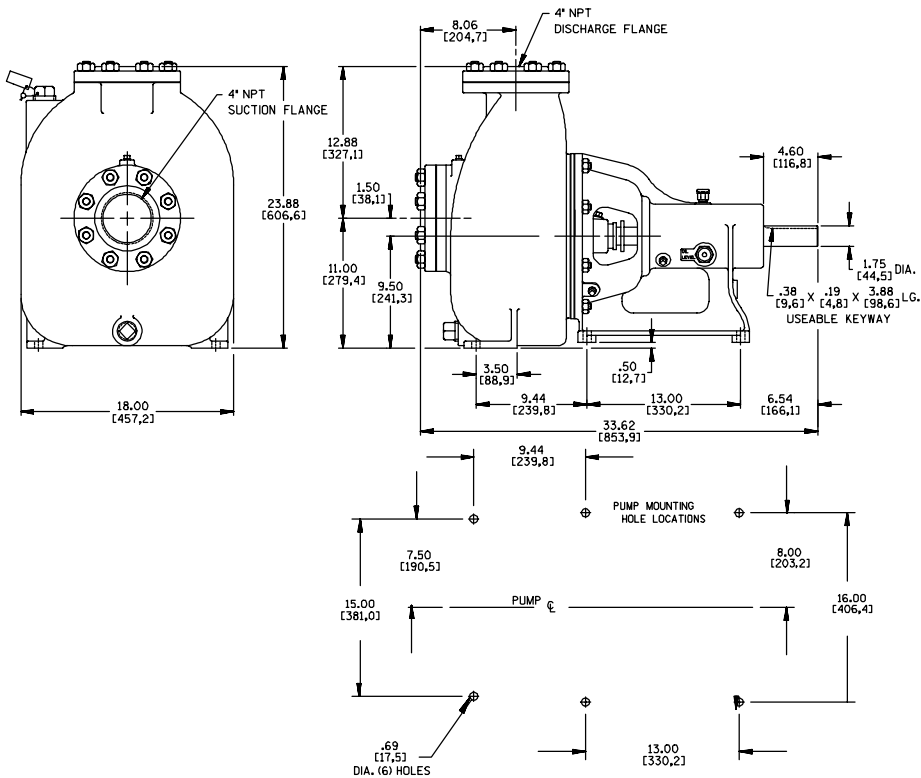
Printed in U.S.A.

Specification Data

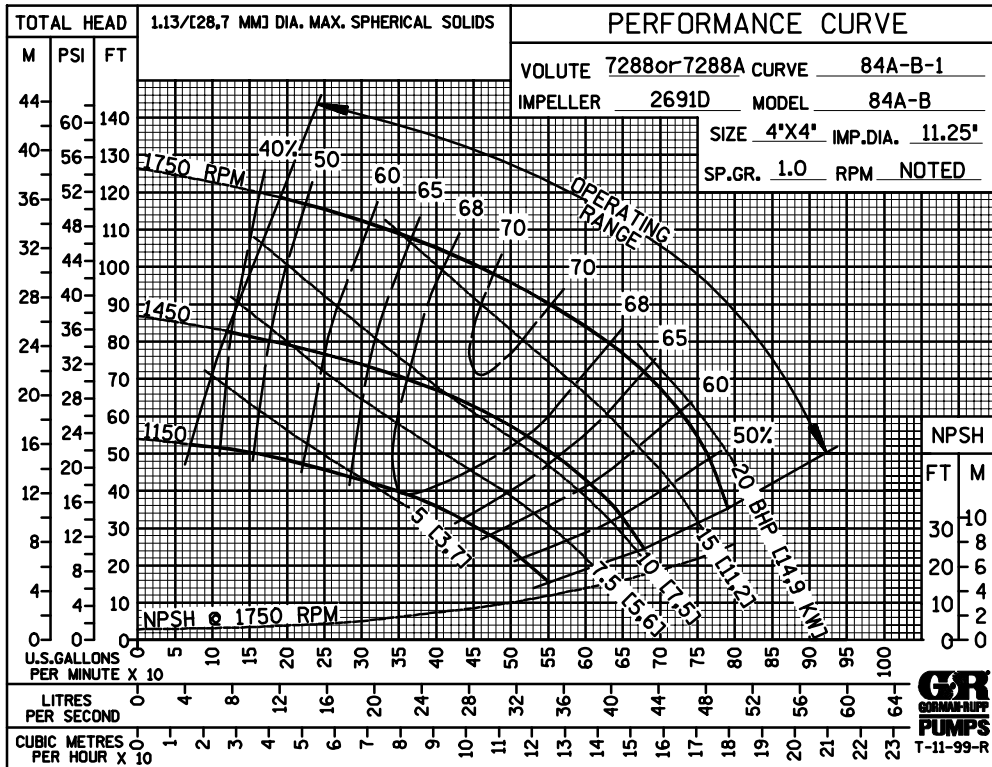
SECTION 50, PAGE 1808

APPROXIMATE
DIMENSIONS and WEIGHTS

NET WEIGHT: 471 LBS. (214 KGS.)
SHIPPING WEIGHT: 486 LBS. (220 KGS.)
EXPORT CRATE: 19.7 CU. FT. (0,56 CU. M.)



DIMENSIONS:
INCHES
(MILLIMETERS)



THE GORMAN-RUPP COMPANY • MANSFIELD, OHIO

GORMAN-RUPP OF CANADA LIMITED • ST. THOMAS, ONTARIO, CANADA

Specifications Subject to Change Without Notice

Printed in U.S.A.