

Self Priming Centrifugal Pump



Models 82E3-B and 82E52-B

Size 2" x 2"

PUMP SPECIFICATIONS

Size: 2" x 2" (51 mm x 51 mm) NPT - Female.

Casing: Gray Iron 30.

Maximum Operating Pressure 86 psi (593 kPa)*.

Semi-Open Type, Four Vane Impeller: Gray Iron 30.

Handles 3/4" (19 mm) Diameter Spherical Solids.

Impeller Shaft: Carbon Steel 1045.

Replaceable Wear Plate: Carbon Steel 1026.

Pedestal: Gray Iron 30.

Shaft Sleeve: (82E3-B) Stainless Steel 304.
(82E52-B) Alloy Steel 4130.

Seal Plate: Gray Iron 30.

Flap Valve: Buna-N w/Nylon Reinforcement,
Gray Iron 30 and Steel.

Radial and Thrust Bearings: Open Single Row Ball.

Bearing Lubrication: SAE 30 Non-Detergent Oil.

Flange: Gray Iron 30.

Gaskets: Cork.

Hardware: Standard Plated Steel.

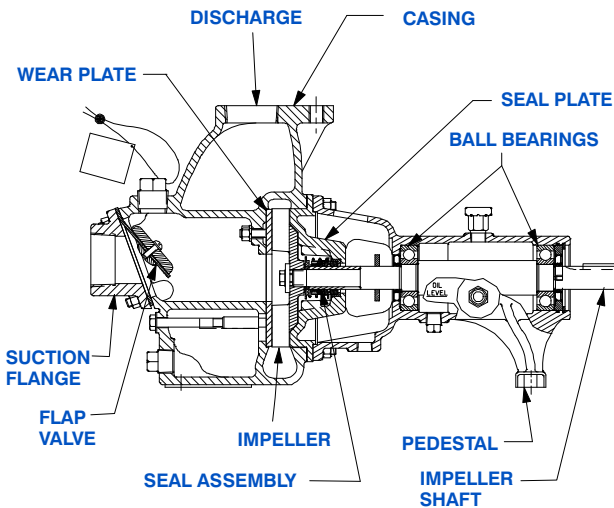
Optional Equipment:

Galvanized Ductile Iron Discharge Elbow.

Consult Factory for Additional Options.

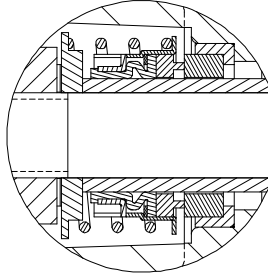


**Consult Factory for Applications Exceeding Maximum Pressure and/or Temperature Indicated.*

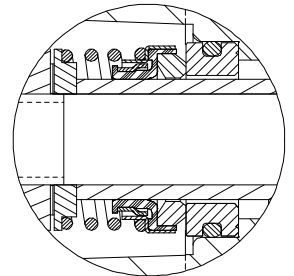


82E3-B SHOWN

82E3-B SEAL DETAIL Type 2, Mechanical, Self-Lubricated. Carbon Rotating Face. Ceramic Stationary Face. Buna-N Elastomers. Stainless Steel 18-8 Cage and Spring. Maximum Temperature of Liquid Pumped 160°F (71 °C).*



82E52-B SEAL DETAIL Type 31, Mechanical, Self-Lubricated. Silicon Carbide Rotating and Stationary Faces. Fluorocarbon Elastomers (DuPont Viton® or Equivalent). Stainless Steel 18-8 Cage and Spring. Maximum Temperature of Liquid Pumped 160°F (71 °C).*



GORMAN-RUPP PUMPS

www.grpumps.com

Specifications Subject to Change Without Notice

Printed in U.S.A.

Specification Data

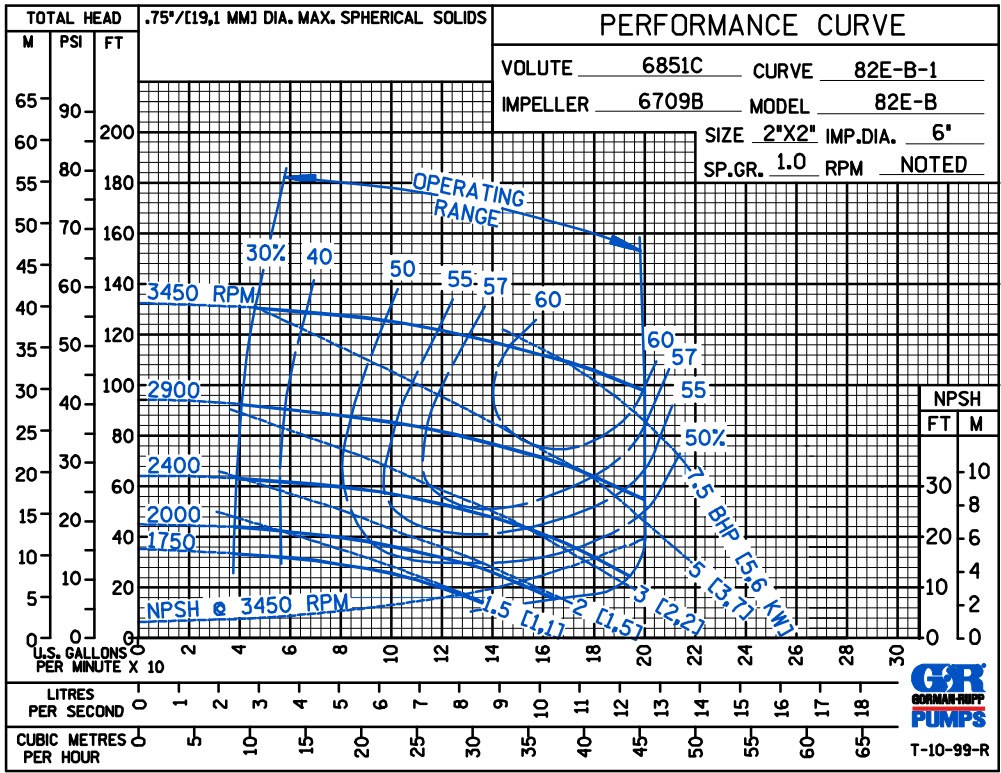
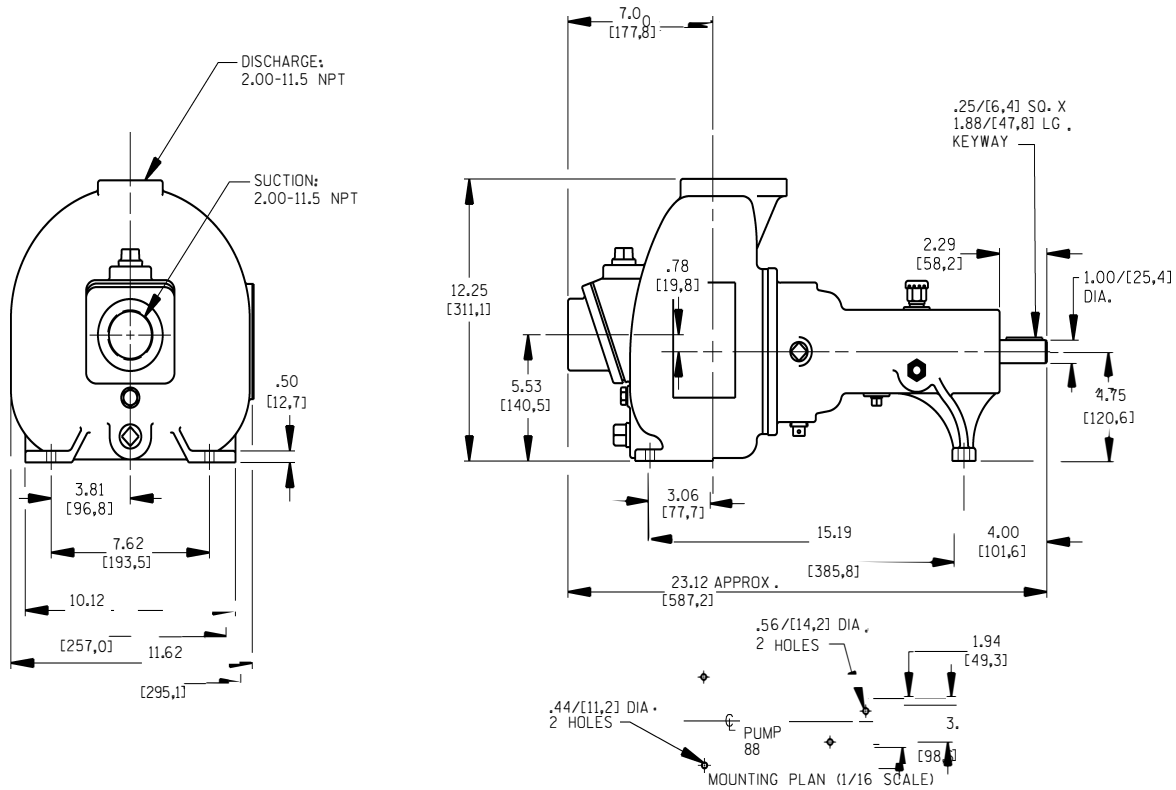
SECTION 50, PAGE 1101

APPROXIMATE
DIMENSIONS and WEIGHTS

NET WEIGHT: 90 LBS. (40,8 KG.)

SHIPPING WEIGHT: 100 LBS.(45,4 KG.)

EXPORT CRATE: 7.9 CU. FT. (0,22 CU. M.)



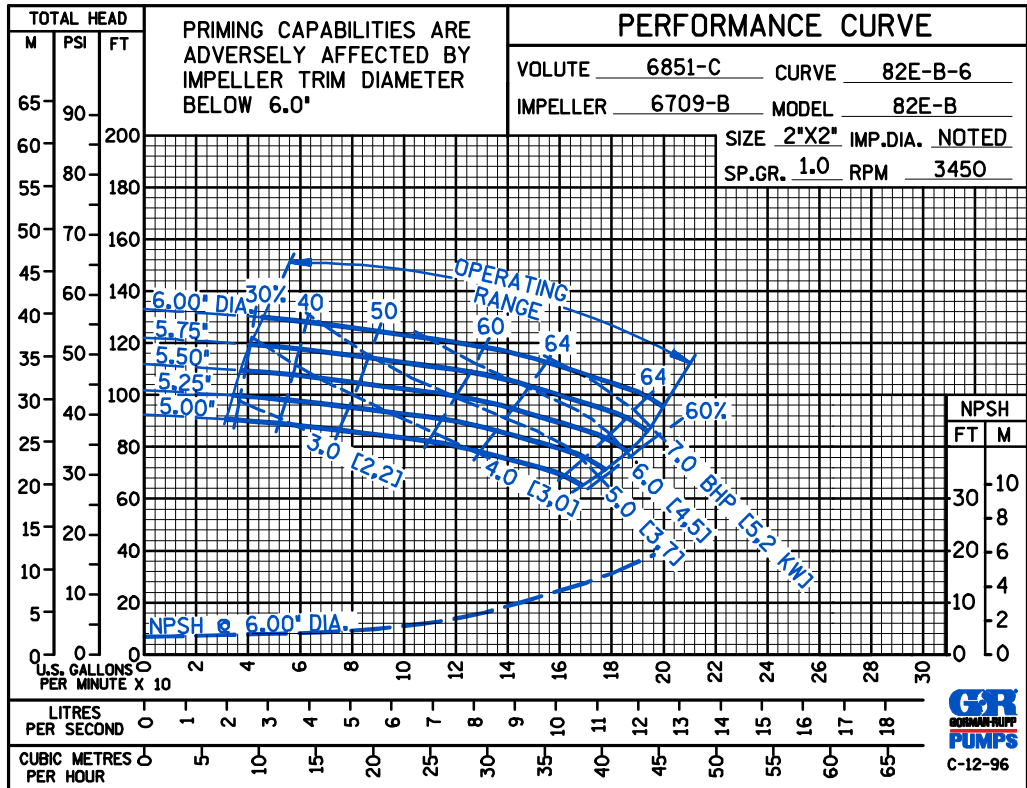
GORMAN-RUPP PUMPS

www.grpumps.com

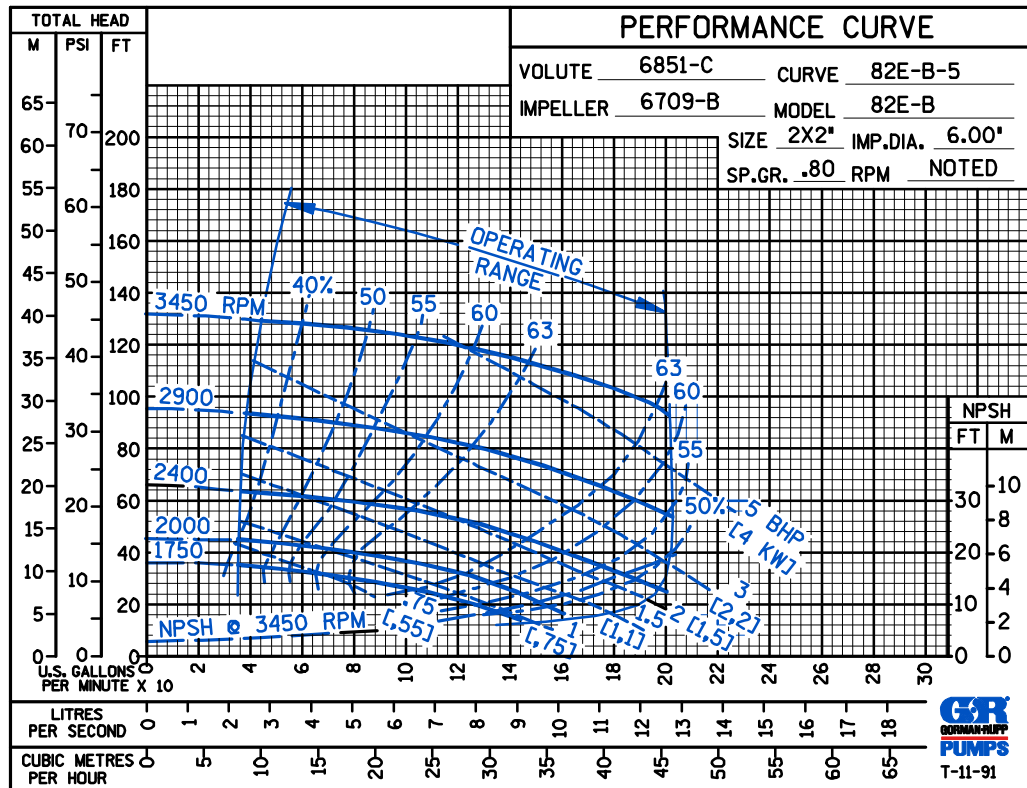
Specifications Subject to Change Without Notice

Printed in U.S.A.

TRIMMED
IMPELLER



PERFORMANCE
BASED ON
PETROLEUM



GORMAN-RUPP PUMPS

www.grpumps.com

Specifications Subject to Change Without Notice

Printed in U.S.A.