

A C E



Self Priming Centrifugal Pump

Basic Pedestal
Model 82B1-B
Size 2" x 2"

PUMP SPECIFICATIONS

Size: 2" x 2" (51 mm x 51 mm) NPT Male.
Pump Casing: Epoxy Coated Cast Aluminum.
 Maximum Operating Pressure 61 psi. (4,3 kg/cm²)*
Open Type, Six Vane Impeller: Gray Iron No. 30.
 Handles 5/8" (15,9 mm) Diameter Spherical Solids.
Volute Scroll: Gray Iron No.30.
Impeller Shaft: Carbon Steel, ASTM N. A-29-12L14.
Shaft Sleeve: Stainless Steel Type 304.
Pedestal: Gray Iron No.30.
Flap Valve: EPDM Rubber Reinforced by Steel.
Two Bearings: Single Row, Radial, Lubricated for Life and Maintenance-Free.
Internal Wetted Hardware: Stainless Steel.
External Hardware: Standard Plated Steel.
O-Rings: EPDM Rubber.
Fill/Drain Plugs: Plastic.

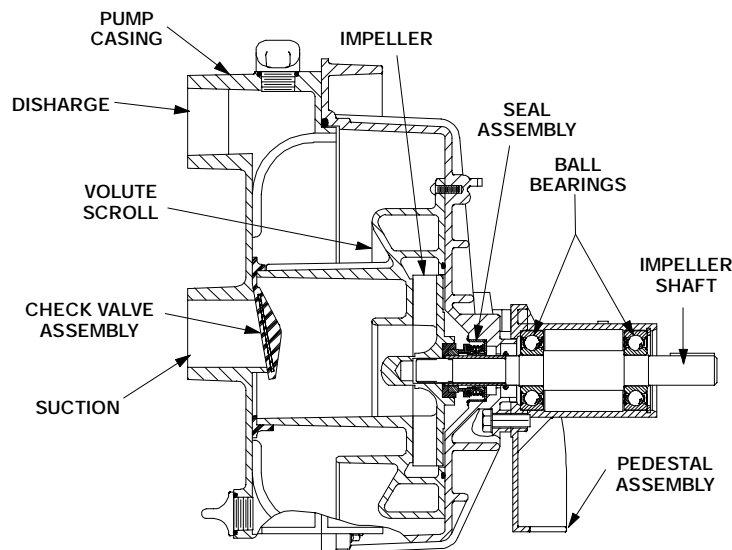
Optional Equipment

Strainer: Part No. 26841-025.
 Consult Factory for Additional Options.



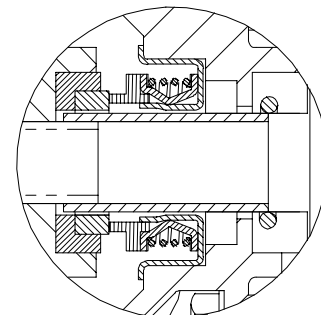
WARNING!

Do not use in explosive atmosphere or for pumping volatile flammable liquids.



SEAL DETAIL Type 68, Mechanical, Self-Lubricated. Silicon Carbide Rotating and Stationary Faces. Fluorocarbon Elastomers (DuPont Viton® or Equivalent). Stainless Steel No. 18-8 Cage and Spring. Temperature of Liquid Pumped, 160°F (71°C)*.

SEAL DETAIL



* Consult Factory for Applications Exceeding Maximum Pressure and/or Temperature Indicated.



THE GORMAN-RUPP COMPANY • MANSFIELD, OHIO

GORMAN-RUPP OF CANADA LIMITED • ST. THOMAS, ONTARIO, CANADA

Specifications Subject to Change Without Notice

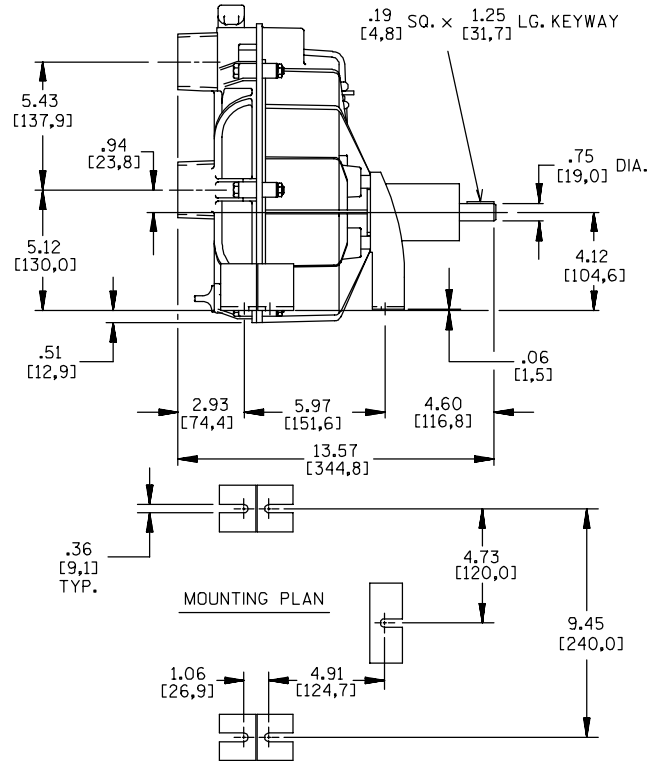
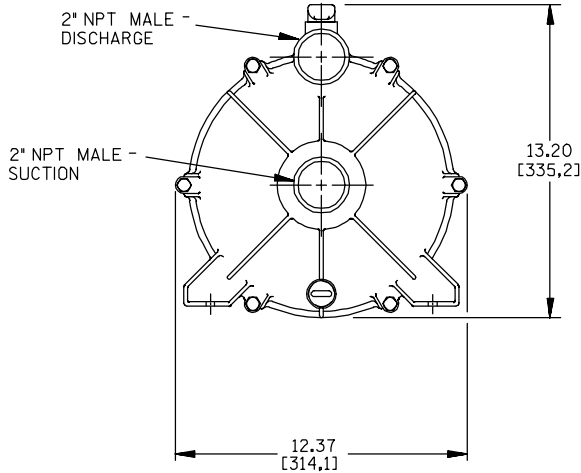
Printed in U.S.A.

Specification Data

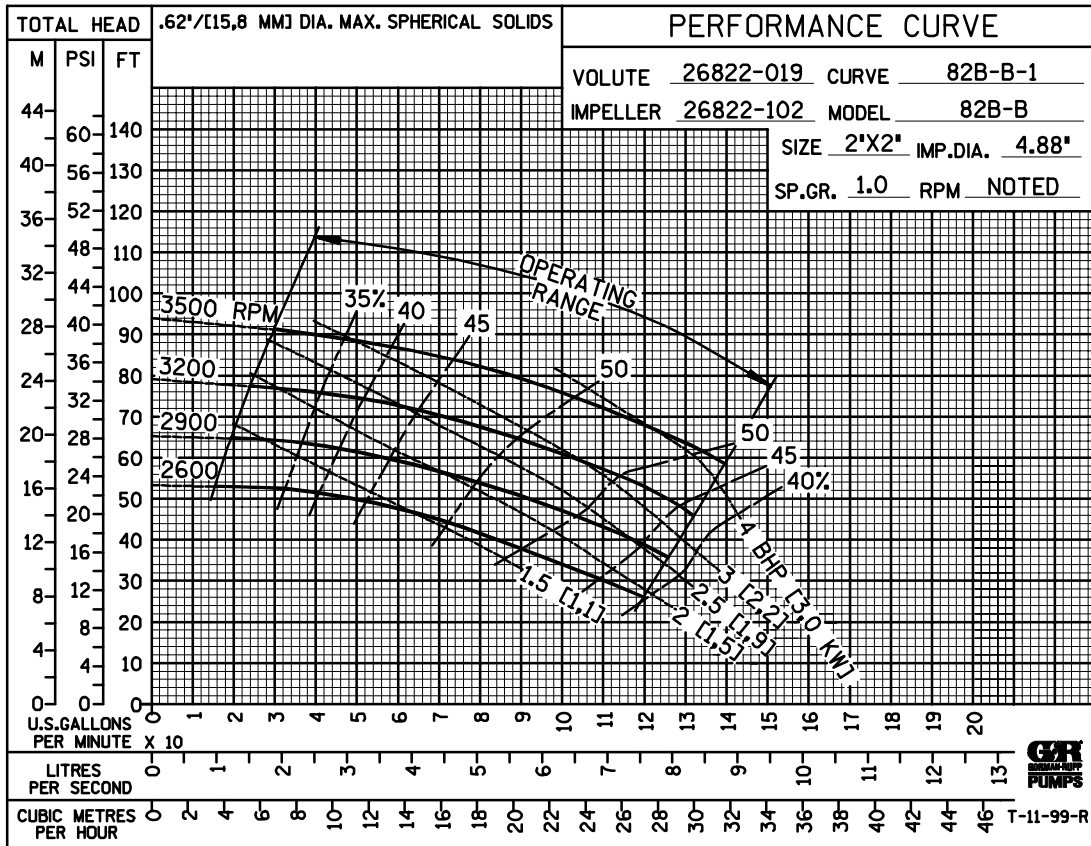
SECTION 50, PAGE 990

APPROXIMATE DIMENSIONS and WEIGHTS

NET WEIGHT: 27 LBS. (12 KG.)
 SHIPPING WEIGHT: 33 LBS. (15 KG.)
 EXPORT CRATE SIZE: 1.3 CU. FT. (0,04 CU. M.)



DIMENSIONS:
 INCHES
 [MILLIMETERS]



THE GORMAN-RUPP COMPANY • MANSFIELD, OHIO

GORMAN-RUPP OF CANADA LIMITED • ST. THOMAS, ONTARIO, CANADA

Specifications Subject to Change Without Notice

Printed in U.S.A.