

ACE

# Self Priming Centrifugal Pump

**Model 81 1/2B2-B****Size 1 1/2" x 1 1/2"****PUMP SPECIFICATIONS****Size:** 1 1/2" x 1 1/2" (38 mm x 38 mm) NPT - Female.**Casing:** Gray Iron 30.

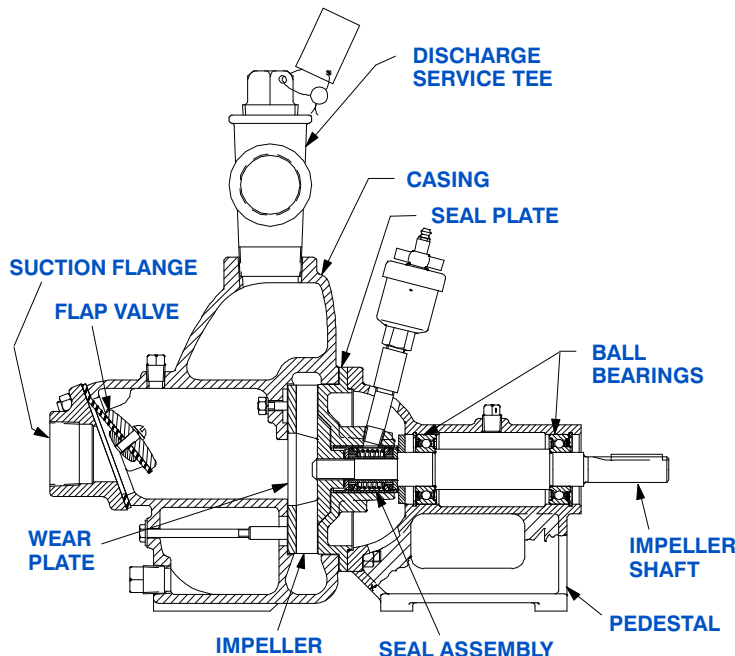
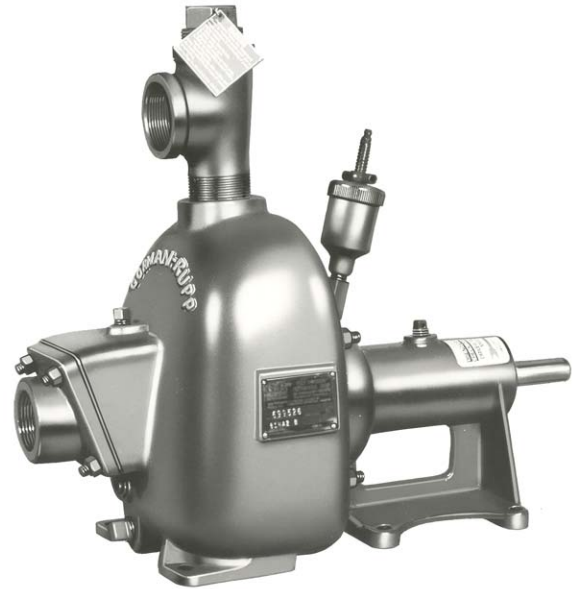
Maximum Operating Pressure 55 psi (379 kPa).\*

**Semi-Open Type, Three Vane Impeller:** Gray Iron 30.

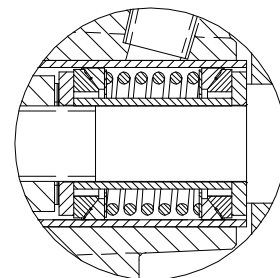
Handles 5/8" (15,8 mm) Diameter Spherical Solids.

**Impeller Shaft:** Carbon Steel 1215.**Replaceable Wear Plate:** Carbon Steel 1026.**Pedestal:** Gray Iron 30.**Seal Plate:** Gray Iron 30.**Flap Valve:** Steel, Gray Iron 30 and Buna-N w/Nylon Reinforcement.**Seal Liner:** Copper Alloy C26000.**Radial and Thrust Bearings:** Open Single Row Ball.**Bearing Lubrication:** Grease.**Suction Flange:** Gray Iron 30.**Gaskets:** Vegetable Fiber.**Hardware:** Standard Plated Steel.**Discharge Service Tee:** Ductile Iron.**Optional Equipment:** Strainer.

Consult Factory for Additional Options.

*\*Consult Factory for Applications Exceeding  
Maximum Pressure and/or Temperature Indicated.***SEAL DETAIL**

Double, Grease-Lubricated with Spring Loaded Grease Cup. Sintered Bronze Stationary Seal Seats. Steel Rotating Faces. Neoprene Packing Rings Maximum Temperature of Liquid Pumped 110°F (43°C). Maximum Suction Pressure 10 psi (69 kPa).\*

**THE GORMAN-RUPP COMPANY • MANSFIELD, OHIO**

GORMAN-RUPP OF CANADA LIMITED • ST. THOMAS, ONTARIO, CANADA

www.grpumps.com

Specifications Subject to Change Without Notice

Printed in U.S.A.

**Specification Data**

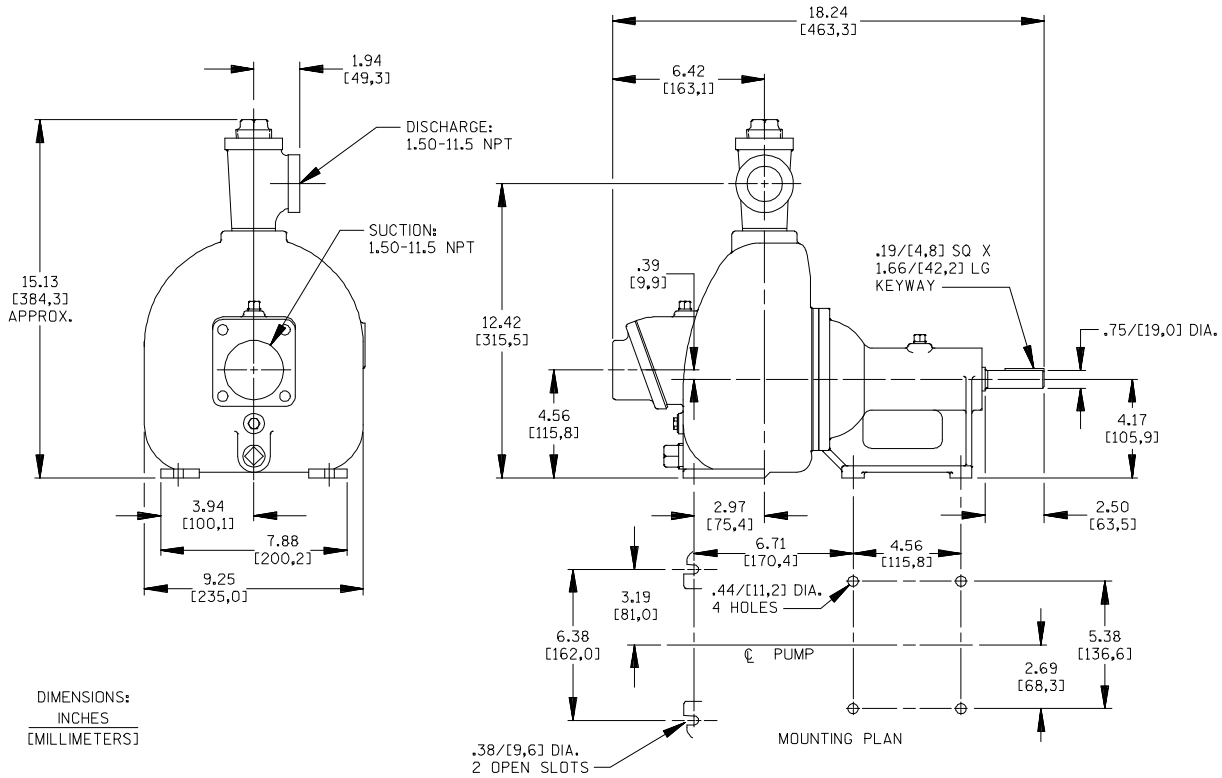
SECTION 50, PAGE 975

APPROXIMATE  
DIMENSIONS and WEIGHTS

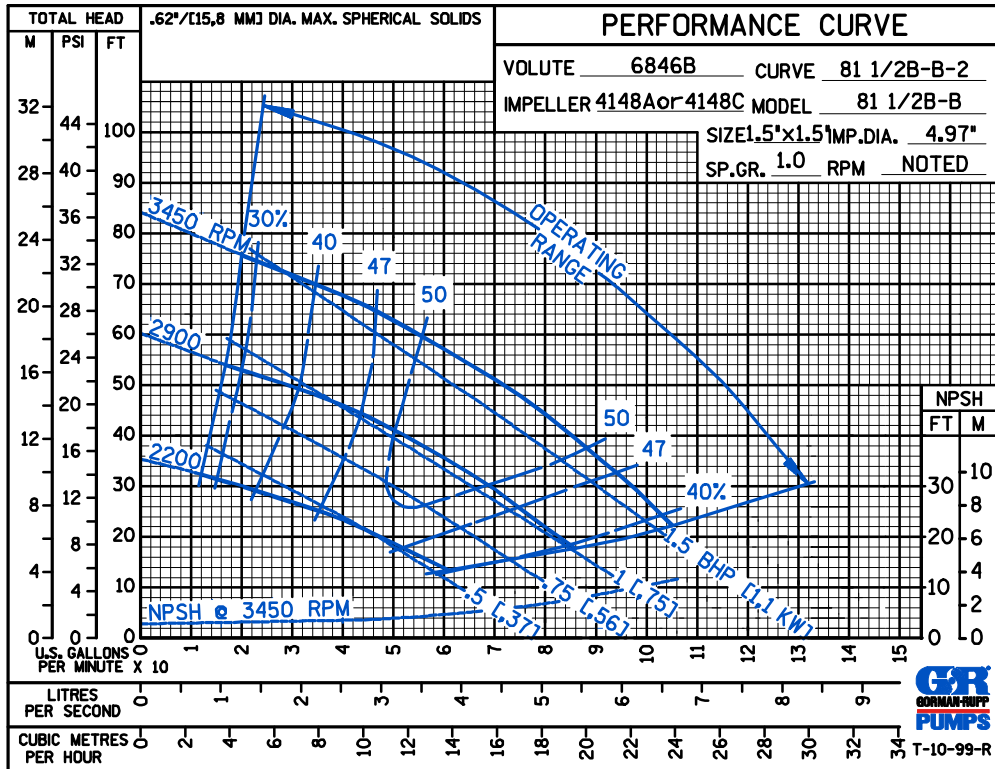
**NET WEIGHT: 58 LBS. (26,3 KG.)**

**SHIPPING WEIGHT: 68 LBS. (30,8 KG.)**

**EXPORT CRATE: 3.5 CU. FT. (0,10 CU. M.)**



DIMENSIONS:  
INCHES  
[MILLIMETERS]



**THE GORMAN-RUPP COMPANY • MANSFIELD, OHIO**

GORMAN-RUPP OF CANADA LIMITED • ST. THOMAS, ONTARIO, CANADA

Specifications Subject to Change Without Notice

Printed in U.S.A.